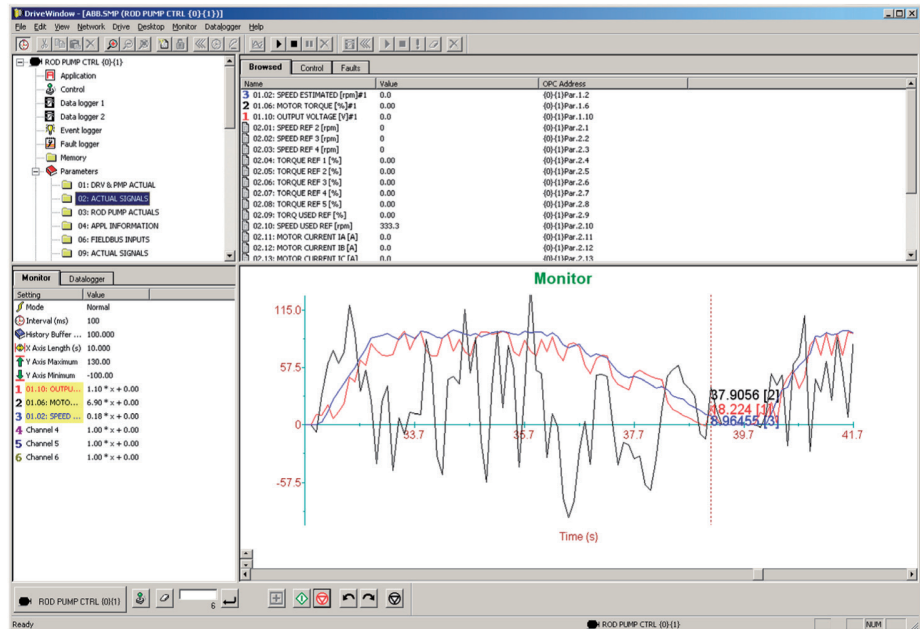


Drive PC tools Startup and maintenance DriveWindow

DriveWindow is an easy to use software tool designed to support the drive's life cycle from startup and monitoring, to backup, and performance tuning. DriveWindow is designed for use with ABB's low and medium voltage industrial drives.



A tool for the entire life cycle

DriveWindow is designed to support the daily operation of ABB low and medium voltage industrial drives. The tool provides users with capabilities to view, edit, and set drive parameters, as well as advanced functions like drive backup and data logger views that can be used throughout the life cycle of the drive.

DriveWindow connects to drives using a disturbance free high speed fiber optic network.

Drive startup and maintenance

DriveWindow is used to configure drive parameters during drive commissioning. Drive parameter configuration files can be saved and used to commission new drives or kept as backups. DriveWindow provides a complete listing of the drive parameters and their corresponding values allowing users to view and edit individual parameters.

Using the built-in data and fault loggers, users are able to monitor signals and real-time status of the drive. This data

can be used for graphical trending of the drive's performance. The data and fault loggers come with functions allowing users to process the data.

PC based drive control

DriveWindow provides a built-in drive control panel allowing users to start, stop, set the direction, speed, and torque reference values of the connected drive.

High speed data access

High speed connections between DriveWindow and drives via the DDCS fibre optic network can be made. The fast access enables oscilloscope-like functionality in the data logger view, where drive information can be viewed graphically and also saved to file.

USB to fiber optic

PC's can connect to the high speed DDCS network using the RUSB-02 adapter. The adapter connects a free USB port on the PC to the DDCS network.

Alternatively, users can connect the PC to the DDCS network using the NDPA-02 PCMCIA adapter.

OPC server

DriveWindow includes DriveOPC, an OPC server for the DDCS network. This can be used as an OPC based commissioning and maintenance interface where OPC networks are used.

Backup and restore

DriveWindow makes creating drive configuration backup files simple. These backup files can be stored on external media, and can be used to restore a drive, or even to configure spare control boards. The backup files can be used to reduce commissioning times for new drives by applying the same settings as used in the current drives. Comparing backup files with DriveWindow allows for analysis and trending on drive configurations.

Highlights

- View and set drive parameters
- Monitor drive signals, graphically and numerically
- Use high speed data connection to the drive
- Save and compare drive configuration files
- Control the drive using the built-in control panel
- Tune the drives performance
- OPC server
- Connects via USB to the DDCS network

Supported drives

- ACS800
- ACS600
- DCS800
- DCS600
- ACS1000
- ACS6000

Connectivity options

- USB to DDCS fibre optic network
- PCMCIA to DDCS fibre optic network
- Point to point

Supported operating systems

- Windows 7, Windows Vista, Windows XP and Windows 2000

Ordering information and technical support

Contact your local ABB or visit www.abb.com/drives and select the link for Drive PC Tools.

Email: drive.care@fi.abb.com



DDCS ring network. PC uses USB or PCMCIA adapter.



DDCS tree network with optical branching units. PC uses USB or PCMCIA adapter.



DDCS point to point network. PC uses USB or PCMCIA adapter.

For more information please contact:

www.abb.com/drives
www.abb.com/drivespartners

© Copyright 2011 ABB. All rights reserved.
Specifications subject to change without notice.

Power and productivity
for a better world™ **ABB**