

Data Capture Utility

LogMaster



The Company

We are an established world force in the design and manufacture of instrumentation for industrial process control, flow measurement, gas and liquid analysis and environmental applications.

As a part of ABB, a world leader in process automation technology, we offer customers application expertise, service and support worldwide.

We are committed to teamwork, high quality manufacturing, advanced technology and unrivalled service and support.

The quality, accuracy and performance of the Company's products result from over 100 years experience, combined with a continuous program of innovative design and development to incorporate the latest technology.

The UKAS Calibration Laboratory No. 0255 is just one of the ten flow calibration plants operated by the Company, and is indicative of our dedication to quality and accuracy.

EN ISO 9001:2000



Cert. No. Q5907

EN 29001 (ISO 9001)



Lenno, Italy – Cert. No. 9/90A

Information in this manual is intended only to assist our customers in the efficient operation of our equipment. Use of this manual for any other purpose is specifically prohibited and its contents are not to be reproduced in full or part without prior approval of the Technical Publications Department.

Health and Safety

To ensure that our products are safe and without risk to health, the following points must be noted:

1. The relevant sections of these instructions must be read carefully before proceeding.
2. Warning labels on containers and packages must be observed.
3. Installation, operation, maintenance and servicing must only be carried out by suitably trained personnel and in accordance with the information given.
4. Normal safety precautions must be taken to avoid the possibility of an accident occurring when operating in conditions of high pressure and/or temperature.
5. Chemicals must be stored away from heat, protected from temperature extremes and powders kept dry. Normal safe handling procedures must be used.
6. When disposing of chemicals ensure that no two chemicals are mixed.

Safety advice concerning the use of the equipment described in this manual or any relevant hazard data sheets (where applicable) may be obtained from the Company address on the back cover, together with servicing and spares information.

CONTENTS

1 INTRODUCTION	1
2 PREPARATION	2
2.1 Installing the LogMaster Software	2
2.2 Connecting a Computer to a Transmitter	2
2.2.1 Configuring the PC Comms Ports	2
3 OPERATION	3
3.1 Starting LogMaster	3
3.2 The Menus – Overview	3
3.2.1 The Drop-Down Menus	3
3.2.2 Changing Logger Access Passwords	4
3.2.3 The Tool Bar Buttons	5
3.3 Using the Address Book	6
3.4 Logger Access	7
3.4.1 Display Data	8
3.4.2 Change Flow Units	8
3.5 The Status Bar	8

1 INTRODUCTION

LogMaster is a data capture utility for retrieving log data and device information from ABB AquaMaster water meters. It currently supports direct connection to the AquaMaster and remote connections via modem (GSM enabled AquaMasters only) or Vodafone Paknet Radiopad (Paknet AquaMaster installations only).

Log data from the AquaMaster can be saved in comma-separated variable (CSV) format for importing into other applications. For example, spreadsheets for graphing purposes.

When requesting log data, LogMaster can be configured to:

- reset the flow/pressure loggers,
- reset the flow/pressure loggers with a new logging interval,
- synchronize the AquaMaster's time and date with that of the PC.

LogMaster is compatible with Windows 98™, NT™ and Windows 2000™.

2 PREPARATION

2.1 Installing the LogMaster Software

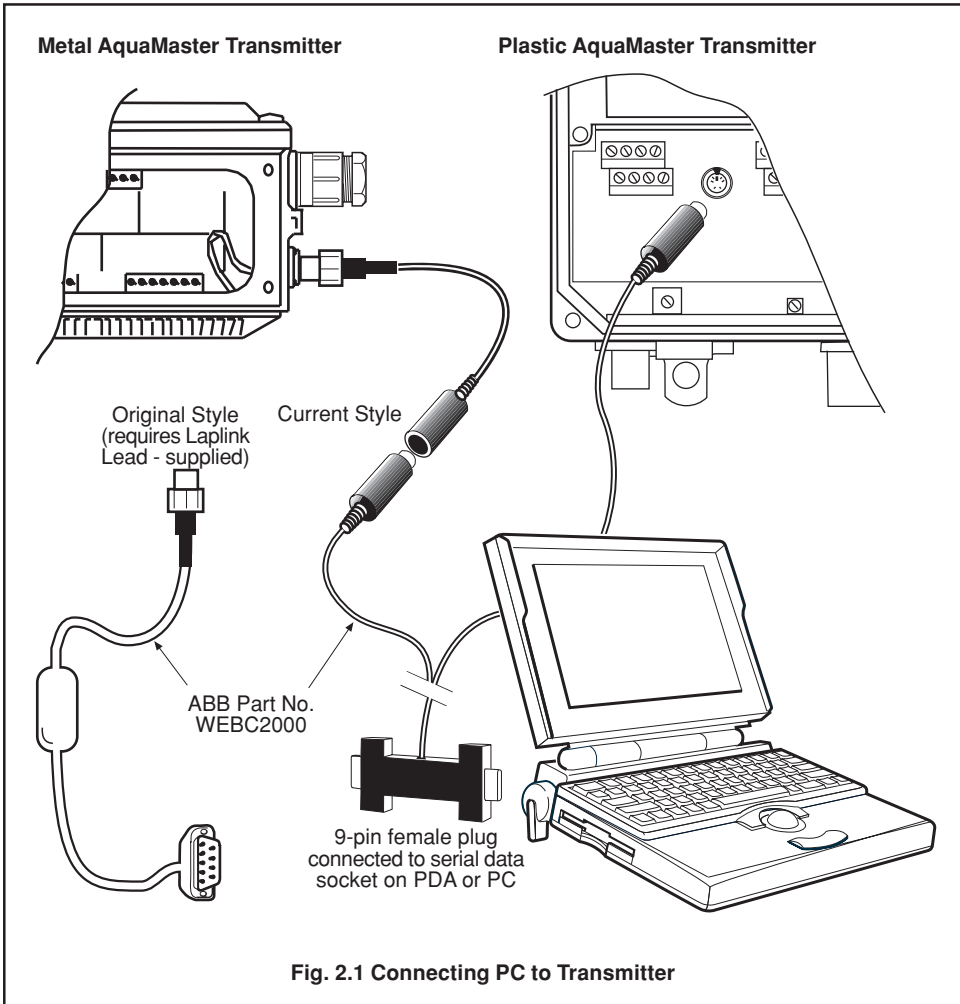
Insert the CD and use the Windows software installation facility to load the **LogMaster** program. Follow the on-screen instructions.

2.2 Connecting a Computer to a Transmitter – Fig. 2.1

Refer to Fig. 2.1 for direct connection to the AquaMaster Transmitter. For remote connections, connect a PC comm port to the connection hardware (modem, GSM terminal, radiopad etc).

2.2.1 Configuring the PC Comms Ports

- 1) From **Comms** drop-down menu (see Section 3.2.1) set the **Remote Connection Port** comm port setting to which the modem or radiopad is connected.
- 2) Set **Direct & Terminal Mode Port** to the port number to be used for direct connections or in terminal mode.



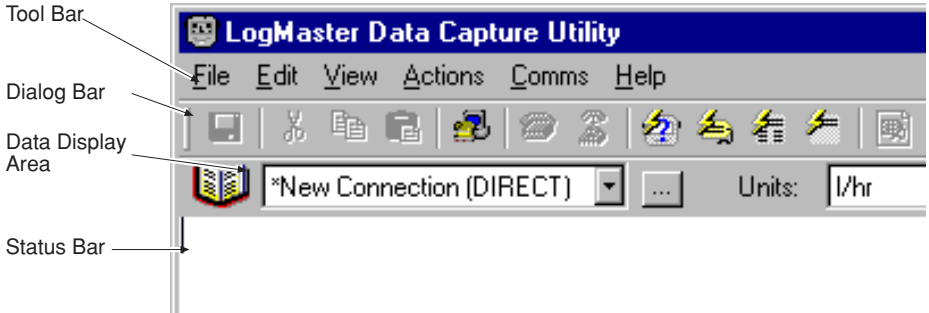
3 OPERATION

3.1 Starting LogMaster

Select **LogMaster** from the program menu and the Main Menu is displayed. Windows commands and conventions apply. To ensure that all the data can be seen, maximize the window.

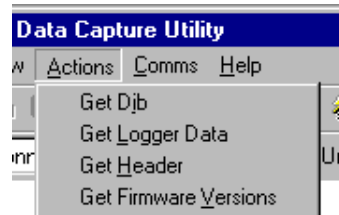
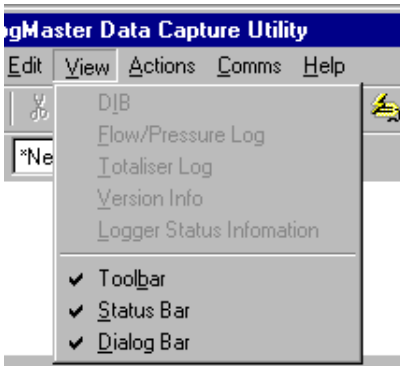
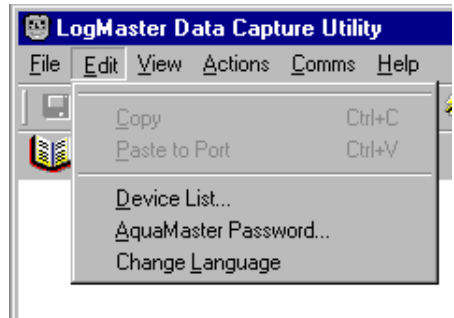
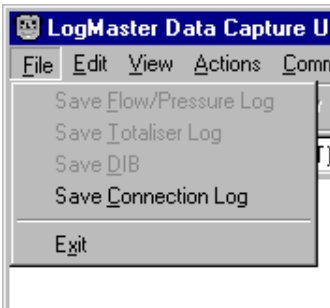
3.2 The Menu – Overview

The main menu is structured as illustrated below. The **Tool Bar**, **Dialog Bar** and **Status Bar** may be hidden or displayed using switches in the **View** menu.



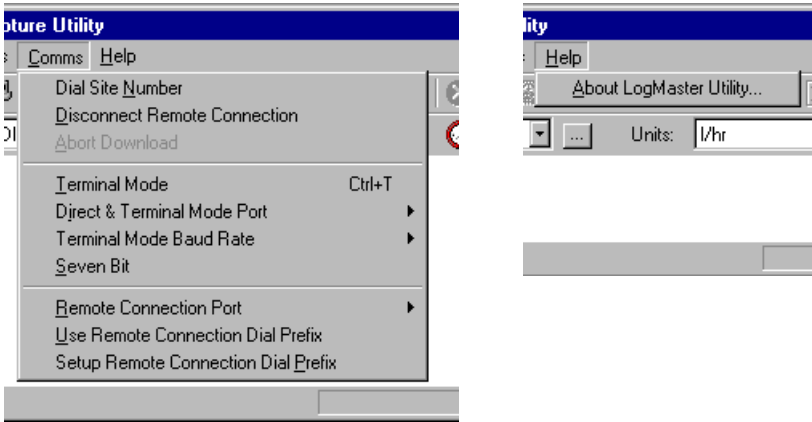
3.2.1 The Drop-Down Menus

These contain all of the functions. For convenience, commonly required functions are presented as 'buttons' on the **Tool Bar** – see section 3.2.3 for a description of each button.



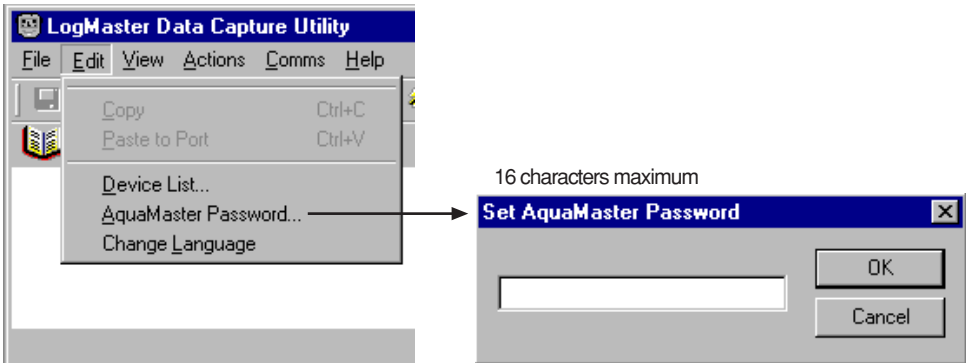
...3 OPERATION

...3.2.1 The Drop-Down Menus



Note. Terminal Mode Baud Rate should be set to 4800 for direct connections.

3.2.2 Changing Logger Access Passwords



Note. The password is used to access the AquaMaster logger. Needed for logger data or header requests.

3.2.3 The Tool Bar Buttons

The function of each active button is displayed when the pointer rests over it and are further expanded on the **Status Bar**. 'Tool Tips' also pop up by the buttons if the mouse pointer rests over the button for one second.

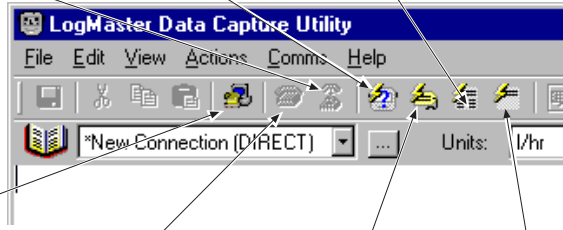
The function of each relevant button on the **Tool Bar** is defined below.

Press to cut connection (hang up). This can be done at any time except during a request.

Press to get and display current system AquaMaster version.

Press to get logger data. Time span or Record Serial number (RSN) range is achieved by setting parameters in the displayed dialog – see 3.4. Requires AquaMaster logger access password else request will fail.

Press to activate terminal mode. This locks open a channel to an allocated comms port. Connection timer also starts. There is now direct access to the AquaMaster menu handling system if connected directly. For modem or radiopad communication, manually dial (using AT commands for modem connections) or press dial button if the target site is displayed in the **Site** window.



Press to dial and connect to displayed site. Option only available for modem or radiopad sites. See section 3.3.1.

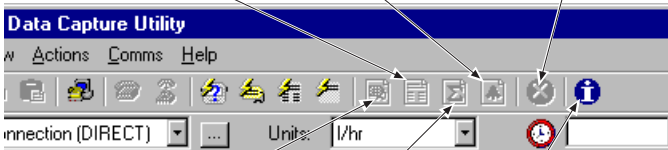
Press to get and display DIB = Device Information Block.

Press to get and display logger header data only. This feature is password protected. Choose an appropriate logger, 1, 2 or 3, from the displayed menu.

Press to display stored data from previous use of Logger button.

Displays status information of last log retrieved.

Press to stop current request.



Press to display stored DIB from previous use of DIB button.

Press for Totaliser (if data has been retrieved from logger 3).

Display LogMaster information.

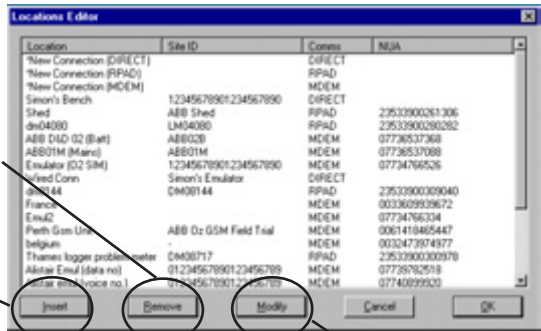
3.3 Using the Address Book



1

Press to select from drop-down list of sites

Press for Locations Editor (see 2 below)



2

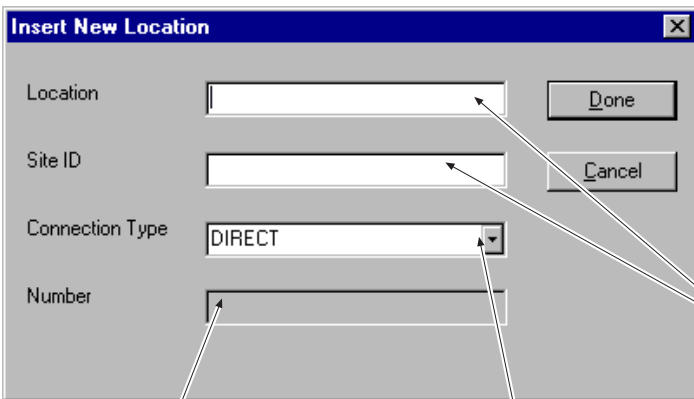
Press to remove an existing site address

Press for Insert New Location

Press to modify existing entry details

3

Enter details in each of the fields as required.



32 characters maximum

Site's phone number (modem connections) or NUA (radiopad connections). Disabled for direct connections.

Selection of connection type: DIRECT, MDEM, RPAD.

3.4 Logger Access



Set up the parameters (see below) to suit.

Select the logger to: **1, 2 or 3**
Loggers 1 and 2 are flow/pressure loggers.
Logger 3 is the Totalizer log.

Time synchronization with the PC.
Select: **Before, After, None**

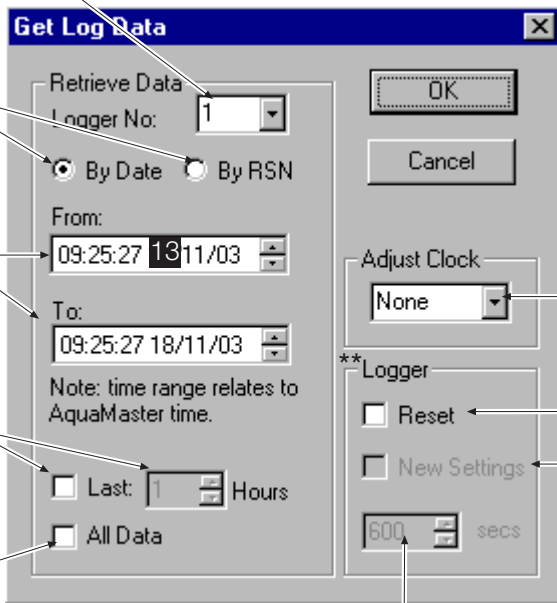
Before means synchronize before download
After means synchronize after download
None means no time synchronization.

Select method of data collection.
This function is disabled if **Last** or **All Data** is selected below.

Set up date/time range.
Point to highlight date/time elements for changing.
If **RSN*** is selected, then these will be the start/end RSN.

If you want the previous hours only,
✓ this box and specify how many.
Disabled if **All Data** selected below.

✓ to retrieve all data in selected logger.



* RSN is the **Record Serial Number** which is unique to each log entry.

** Unavailable if logger 3 is selected.

New logging interval after logger reset.

✓ to apply new settings after logger reset.

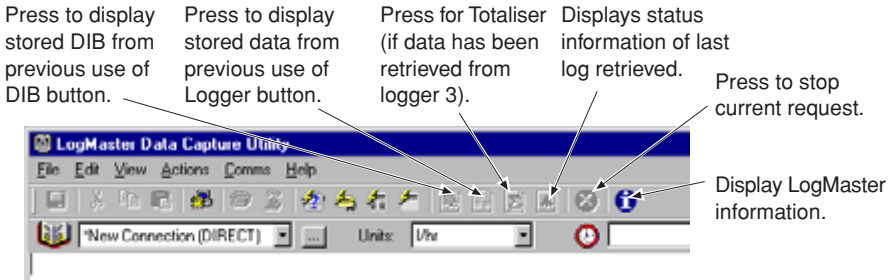
✓ to reset the logger - this deletes all logger records.

Press OK to retrieve the data. If a prompt for the AquaMaster password is displayed, enter the AquaMaster level 4 password – see also Section 3.2.2 to change passwords.

...3 OPERATION

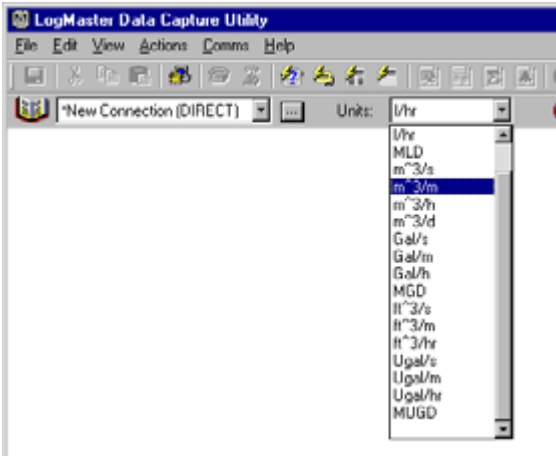
3.4.1 Display Data

Use the buttons on the **Tool Bar** (shown below) to display the logger data.

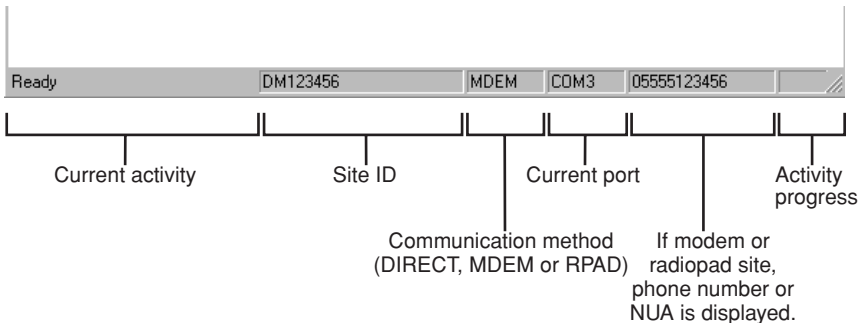


3.4.2 Change Flow Units

Press the down arrow on the Dialog Bar and select from the drop-down list.



3.5 The Status Bar



PRODUCTS & CUSTOMER SUPPORT

Products

Automation Systems

- *for the following industries:*
 - Chemical & Pharmaceutical
 - Food & Beverage
 - Manufacturing
 - Metals and Minerals
 - Oil, Gas & Petrochemical
 - Pulp and Paper

Drives and Motors

- *AC and DC Drives, AC and DC Machines, AC motors to 1kV*
- *Drive systems*
- *Force Measurement*
- *Servo Drives*

Controllers & Recorders

- *Single and Multi-loop Controllers*
- *Circular Chart, Strip Chart and Paperless Recorders*
- *Paperless Recorders*
- *Process Indicators*

Flexible Automation

- *Industrial Robots and Robot Systems*

Flow Measurement

- *Electromagnetic Flowmeters*
- *Mass Flow Meters*
- *Turbine Flowmeters*
- *Flow Elements*

Marine Systems & Turbochargers

- *Electrical Systems*
- *Marine Equipment*
- *Offshore Retrofit and Refurbishment*

Process Analytics

- *Process Gas Analysis*
- *Systems Integration*

Transmitters

- *Pressure*
- *Temperature*
- *Level*
- *Interface Modules*

Valves, Actuators and Positioners

- *Control Valves*
- *Actuators*
- *Positioners*

Water, Gas & Industrial Analytics Instrumentation

- *pH, conductivity, and dissolved oxygen transmitters and sensors*
- *ammonia, nitrate, phosphate, silica, sodium, chloride, fluoride, dissolved oxygen and hydrazine analyzers.*
- *Zirconia oxygen analyzers, katharometers, hydrogen purity and purge-gas monitors, thermal conductivity.*

Customer Support

We provide a comprehensive after sales service via a Worldwide Service Organization. Contact one of the following offices for details on your nearest Service and Repair Centre.

United Kingdom

ABB Limited
Tel: +44 (0)1453 826661
Fax: +44 (0)1453 829671

United States of America

ABB Inc
Tel: +1 215-674-6000
Fax: +1 215-674-7183

Client Warranty

Prior to installation, the equipment referred to in this manual must be stored in a clean, dry environment, in accordance with the Company's published specification. Periodic checks must be made on the equipment's condition. In the event of a failure under warranty, the following documentation must be provided as substantiation:

1. A listing evidencing process operation and alarm logs at time of failure.
2. Copies of all storage, installation, operating and maintenance records relating to the alleged faulty unit.

ABB has Sales & Customer Support expertise
in over 100 countries worldwide

www.abb.com

The Company's policy is one of continuous product improvement
and the right is reserved to modify the information contained
herein without notice.

© ABB 2004

Printed in UK (09.04)



ABB Limited

Oldends Lane, Stonehouse
Gloucestershire, GL10 3TA
UK

Tel: +44 (0)1453 826661
Fax: +44 (0)1453 827856

ABB Inc

125 E. County Line Road
Warminster, PA 18974
USA

Tel: +1 215 674 6000
Fax: +1 215-674 7183