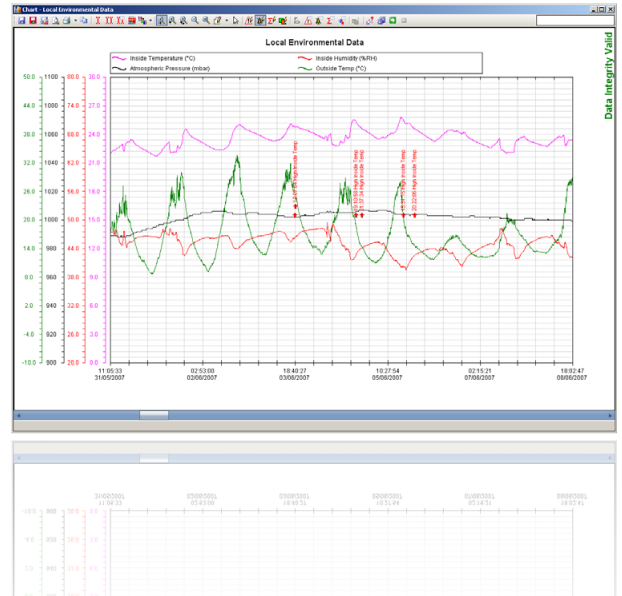


# DataManager Pro RDM500

## Advanced data review software

### Complete management of ScreenMaster data archives



#### Guaranteed data security

- Automatic validation of data files

#### Long term data management

- Database storage and management of process data

#### Information at your fingertips

- Automatic data collection direct from multiple recorders via Ethernet

#### Secure data distribution

- Create packages of specific process data

### DataManager Pro

DataManager Pro is an advanced process data management and analysis application used to store and review data archived by ScreenMaster videographic recorders. Stored data can be displayed in both tabular and graphical format and analyzed using the extensive array of tools provided. A ScreenMaster's archived data can be transferred to DataManager Pro either manually, via the ScreenMaster's memory card, or automatically, via Ethernet communications. DataManager Pro provides automatic, secure, long-term process data storage and enables data to be retrieved quickly when required.

# DataManager Pro RDM500

## Advanced data review software

### Data analysis

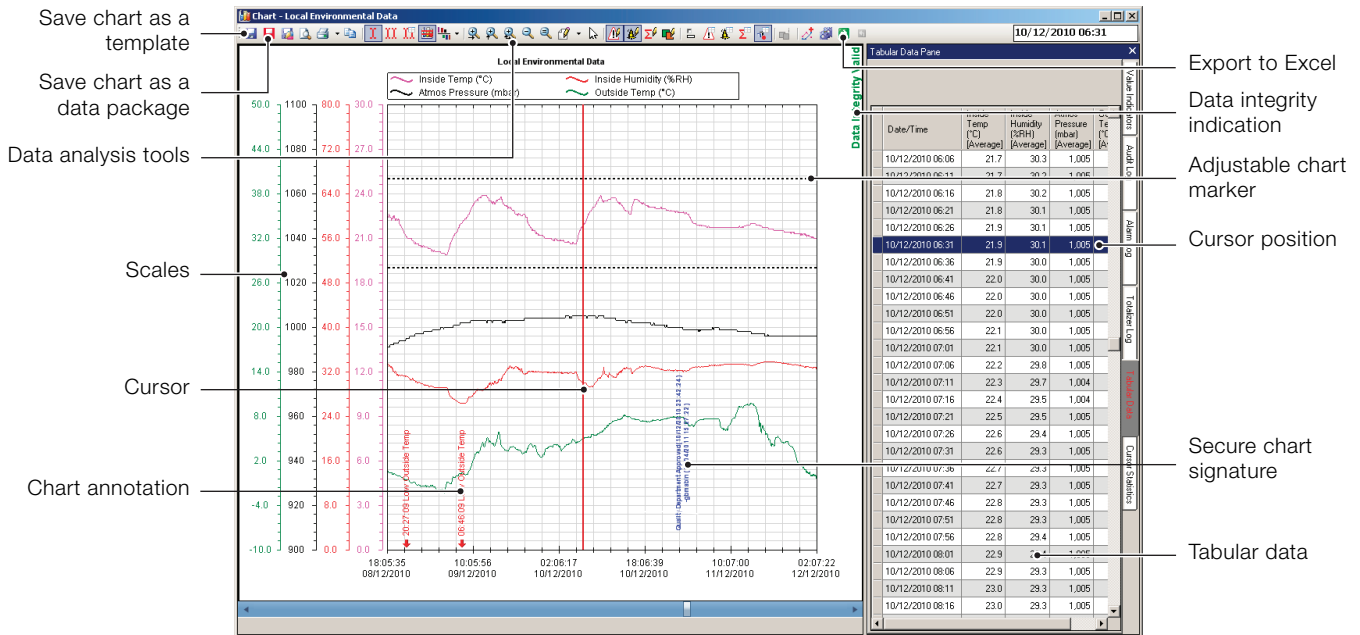


Fig. 1: DataManager Pro chart view

DataManager Pro enables detailed analysis of process data by presenting the data in graphical chart format.

- Data recorded on different ScreenMasters can be combined on a single chart and analyzed side-by-side.
- Once a chart has been configured to display data in the required format, it can be saved as a template. When the template is reopened, the same chart format is presented, complete with any new process data imported to DataManager Pro's database.
- A cursor can be positioned on the chart to display the exact values of the traces at the cursor's position. A second cursor can also be placed on the chart; statistical information on the data between the 2 cursors is then displayed.
- During data analysis, signatures and comments can be added securely to the chart – ideal for approval or verification purposes.

## Data management

At the heart of DataManager Pro is a secure database.

- Data from any number of ScreenMaster recorders can be imported manually, via a recorder's memory card, or automatically, via Ethernet communications.
- Once imported into the database, data is conveniently and securely held for long-term storage.
- When required, data can be displayed quickly and easily by either opening a predefined chart template or selecting the channels and time period required.

## Batch data

A batch record recorded by a ScreenMaster can be instantly analyzed using DataManager Pro.

- Powerful search functionality enables batch records to be located easily and displayed regardless of when, or on which instrument, it was recorded.
- Batches with common attributes (for example, date of manufacture, product type or product line) can be identified easily and charts drawn for side-by-side comparison.
- Batch information entered by the operator at the time the batch was recorded is presented clearly at the base of the chart.

## Data distribution

Data from DataManager Pro's database can be exported for use and analysis elsewhere.

- Secure data packages (that maintain the original data file integrity) can be created and passed to another DataManager Pro user for analysis. This feature is ideal for ScreenMaster users who process third-party products as it enables the product owner to be given a package of data relating to the processing of their product and analyze it using their own copy of DataManager Pro. A free-of-charge (unlicensed) version of DataManager Pro is all that is required for such analysis.
- Data can also be exported in Excel spreadsheet format.

## Recorder networking

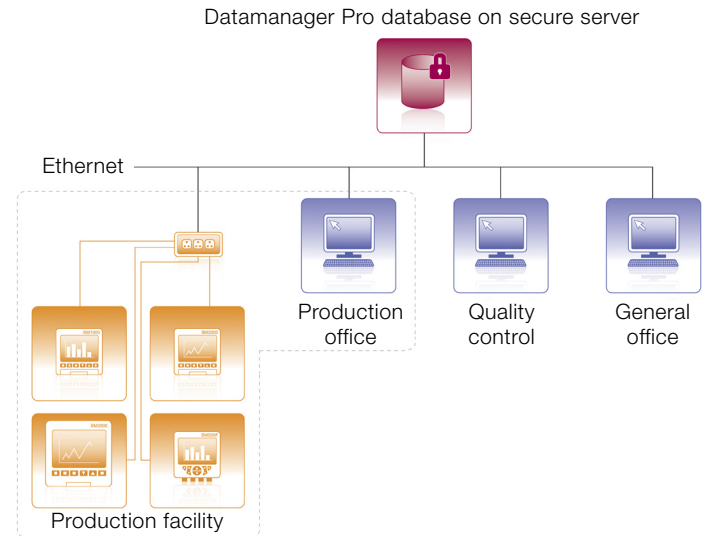


Fig. 2: Network diagram

When connected to ScreenMaster recorders via an Ethernet network, DataManager Pro provides excellent security for, and ease of access to, process data.

- DataManager Pro's database can be located on a secure, backed-up network drive:
  - enhances data security
- DataManager Pro can import new data automatically from any number of ScreenMaster recorders on a scheduled basis:
  - ensures the latest process data is always available for review
- When located on a shared network drive, data from DataManager Pro's database is accessible to multiple users:
  - company-wide accessibility to process data speeds up the review and approval process and increases productivity
- DataManager Pro can synchronize the clocks of multiple ScreenMaster recorders using Ethernet communications:
  - enhances the accuracy of side-by-side comparison of process data

# Functionality

DataManager Pro can be used either licensed or unlicensed; when used unlicensed, it offers basic functionality only. To enable full functionality, the software must be licensed. Table 1 details the features available in each version:

Feature	Unlicensed (Basic functionality)	Licensed (Full functionality)
Manual data import	X	X
Scheduled automatic data import via ethernet (FTS)		X
Database data management	X	X
Data quick view	X	X
Chart display	X	X
Tabular display	X	X
Log files display	X	X
Chart printing	X	X
Predefined chart templates		X
Chart signature		X
Create chart package		X
Display chart package	X	X
Export to Excel		X
Batch data search and access	X	X

**Table 1: Licensed / unlicensed features**

## Minimum system requirements

- 2 GHz Intel™ Pentium™ Dual Core processor or equivalent with 1 Gb of RAM
- Windows XP™ SP2 (32 bit) or Windows 7™ SP2 (32 bit) operating system
- 50 Mb of free hard disk space
- 1024 x 768 minimum screen resolution

## Compatible products

Datamanager Pro can be used to analyze data from the following products:

- SM series videographic recorders
- C1300 circular chart recorder
- Aztec series analyzers
- Navigator series analyzers

## Ordering information

DataManager Pro is available for download from

[ABB.com/recorders](http://ABB.com/recorders)

- Single user license – part number RDM500L
- Multi-user site licence – part number RDM500ML\*
- Software CD – part number RDM500CD

\*The purchase of a multi-user site license authorizes the installation and use of DataManager Pro on multiple PCs at a single (geographic) site. A geographic site is defined as a site covered by a single postal address.

For more information please contact:

**ABB Limited**  
**Process Automation**  
Howard Road  
St. Neots  
Cambridgeshire PE19 8EU  
UK  
Tel: +44 (0)1480 475321  
Fax: +44 (0)1480 217948

[www.abb.com](http://www.abb.com)

### Note

We reserve the right to make technical changes or modify the contents of this document without prior notice. With regard to purchase orders, the agreed particulars shall prevail. ABB does not accept any responsibility whatsoever for potential errors or possible lack of information in this document.

We reserve all rights in this document and in the subject matter and illustrations contained therein. Any reproduction, disclosure to third parties or utilization of its contents in whole or in parts – is forbidden without prior written consent of ABB.

Copyright© 2012 ABB  
All rights reserved

3KXR071301R1001

Windows XP, Windows 7 and Access are registered trademarks of Microsoft Corporation in the United States and/or other countries.  
Intel and Pentium are registered trademarks of Intel Corporation in the United States and/or other countries.