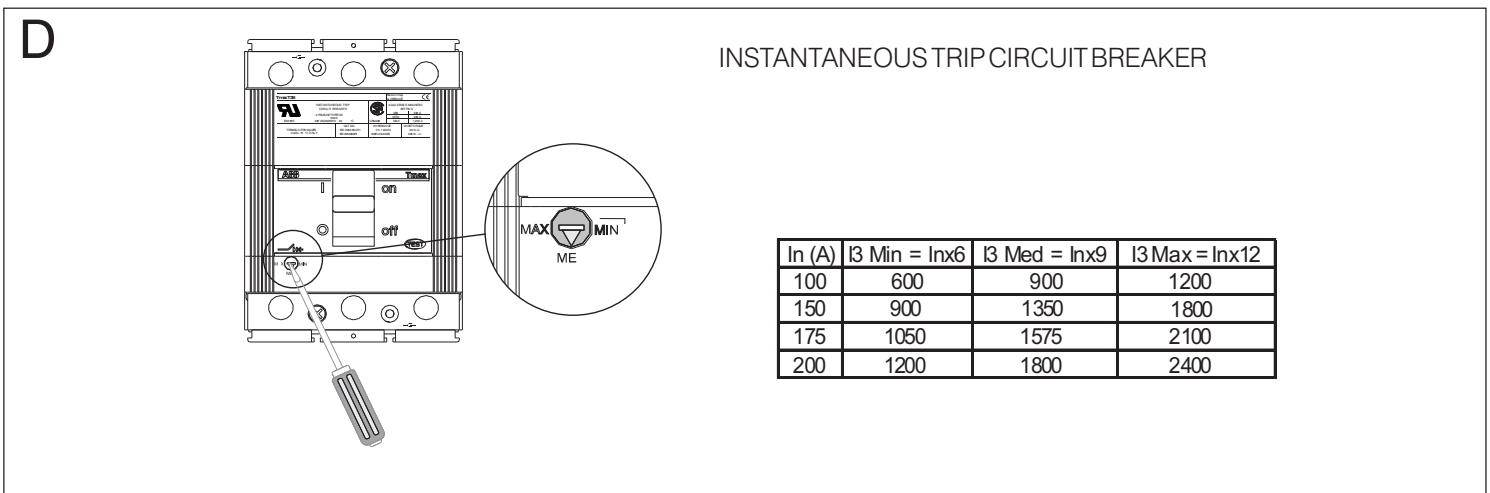
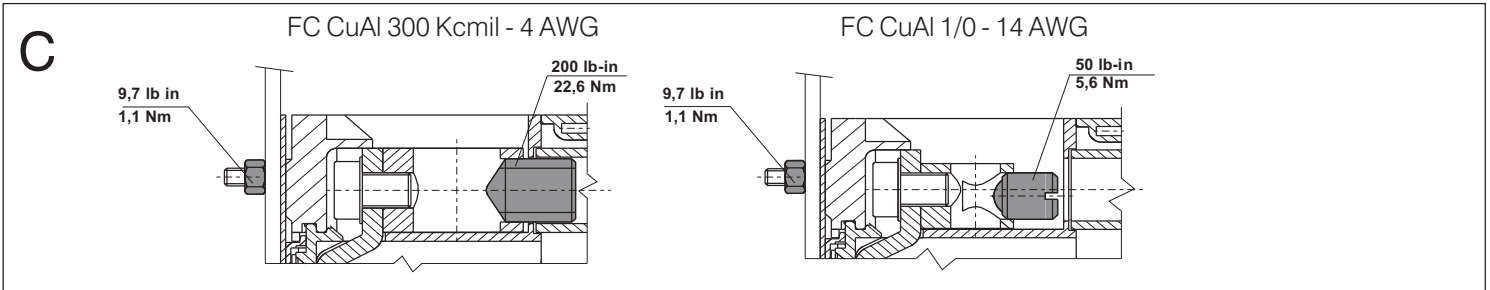
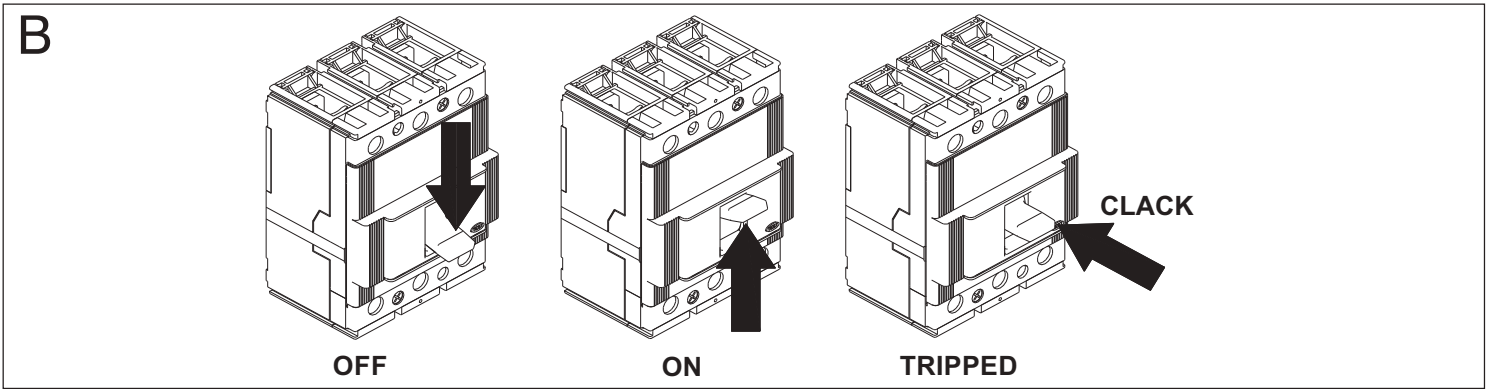
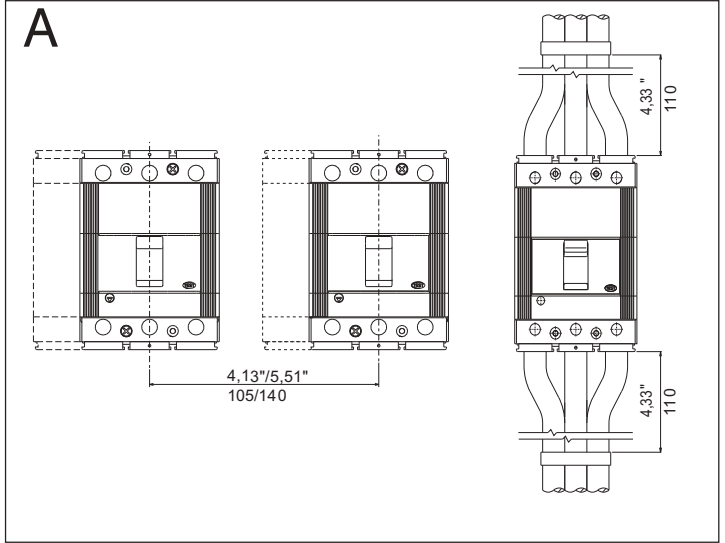
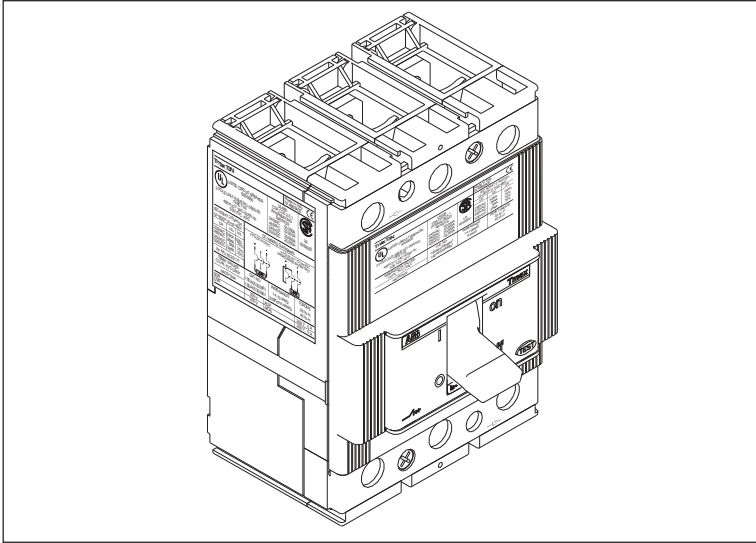
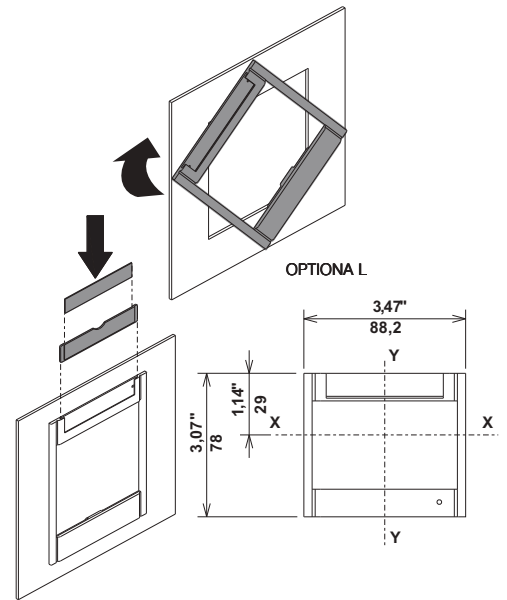
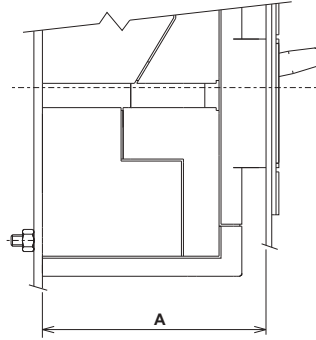
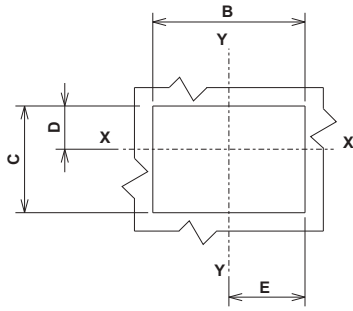


Tmax T3 UL

DOC. N.° RH0013002 - L6115



E



	A	B-III	B-IV	C	D	E
WHIT FLANGE (OPTIONAL) CON MOSTRINA (OPTIONAL)	3,14"/80	3,26"/83	3,26"/83	2,28"/58	0,74"/19	1,63"/41,5
WITHOUT FLANGE SENZA MOSTRINA	3,14"/80	3,07"/78,2	3,07"/78,2	1,85"/47	0,53"/13,5	1,53"/39,1
	2,83"/72	4,21"/107	5,59"/142	1,85"/47	0,53"/13,5	2,10"/53,5

F

