

TYPE APPROVAL CERTIFICATE
No. ELE432207CS



This is to certify that the product below is found to be in compliance with the applicable requirement of the RINA type approval system.

<i>Description</i>	CONTACTORS
<i>Type</i>	A 145; A 185; A 210; A 260; A 300
<i>Applicant</i>	ABB AB, CEWE-CONTROL S 721 61 VÄSTERÅS SWEDEN
<i>Manufacturer</i>	ABB AB, CEWE-CONTROL
<i>Place of manufacture</i>	S 721 61 VÄSTERÅS SWEDEN
<i>Reference standards</i>	IEC 60947-4-1

Issued in **Genoa** on **October 22, 2007**. This Certificate is valid until **October 22, 2012**

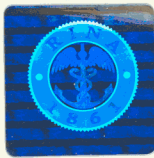
Valerio Bonanni

RINA
Valerio Bonanni

This certificate consists of this page and 2 enclosures



VB



TYPE APPROVAL CERTIFICATE

No. **ELE432207CS**

Enclosure - Page 1 of 2

A 145; A 185; A 210; A 260; A 300

Components

- Contactor type A 145:

Contactor type		A 145		
	V	1000	1000	1000
Rated Frequency	Hz	50-60	50-60	50-60
Ambient temperature	°C	45	45	45
Rated thermal current (Ith)	A	230	230	230
Rated operational voltage (Ue)	V	690	690	415
Rated operational current (Ie)	A	120	230	145
Utilization category		AC3	AC1	AC3

- Contactor type A 185.

Contactor type		A 185		
Rated insulation voltage (Ui)	V	1000	1000	1000
Rated Frequency	Hz	50-60	50-60	50-60
Ambient temperature	°C	45	45	45
Rated thermal current (Ith)	A	250	250	250
Rated operational voltage (Ue)	V	690	690	415
Rated operational current (Ie)	A	170	250	185
Utilization category		AC3	AC1	AC3

- Contactor type A 210.

Contactor type		A 210		
Rated insulation voltage (Ui)	V	1000	1000	1000
Rated Frequency	Hz	50-60	50-60	50-60
Ambient temperature	°C	45	45	45
Rated thermal current (Ith)	A	300	300	300
Rated operational voltage (Ue)	V	690	690	415
Rated operational current (Ie)	A	210	300	210
Utilization category		AC3	AC1	AC3





TYPE APPROVAL CERTIFICATE
No. ELE432207CS
Enclosure - Page 2 of 2
A 145; A 185; A 210; A 260; A 300

- Contactor type A 260.

Contactor type		A 260		
Rated insulation voltage (Ui)	V	1000	1000	1000
Rated Frequency	Hz	50-60	50-60	50-60
Ambient temperature	°C	45	45	45
Rated thermal current (Ith)	A	350	350	350
Rated operational voltage (Ue)	V	690	690	415
Rated operational current (Ie)	A	220	350	260
Utilization category		AC3	AC1	AC3

- Contactor type A 300.

Contactor type		A 300		
Rated insulation voltage (Ui)	V	1000	1000	1000
Rated Frequency	Hz	50-60	50-60	50-60
Ambient temperature	°C	45	45	45
Rated thermal current (Ith)	A	400	400	400
Rated operational voltage (Ue)	V	690	690	415
Rated operational current (Ie)	A	280	400	300
Utilization category		AC3	AC1	AC3

Genoa 22/10/2007