

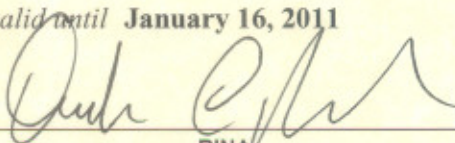
**TYPE APPROVAL CERTIFICATE**  
No. **ELE328005CS**



**This is to certify** that the product below is found to be in compliance with the applicable requirement of the RINA type approval system.

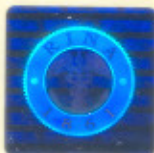
<i>Description</i>	<b>Circuit breaker</b>
<i>Type</i>	<b>Emax E-MS</b>
<i>Applicant</i>	<b>ABB SACE S.P.A. VIA BAIONI 35 24123 BERGAMO (BG) ITALY</b>
<i>Manufacturer</i>	<b>ABB SACE S.P.A.</b>
<i>Place of manufacture</i>	<b>VIA ENRICO FERMI, 14 03100 FROSINONE (FR) ITALY</b>
<i>Reference standards</i>	<b>IEC 60947-2</b>

Issued in **Genoa** on **January 16, 2006**. This Certificate is valid until **January 16, 2011**

  
\_\_\_\_\_  
RINA  
**Andrea Cogliolo**

This certificate consists of this page and 4 enclosures.





TYPE APPROVAL CERTIFICATE

No. ELE328005CS

Enclosure - Page 1 of 4

Emax E-MS

**Materials/Components**

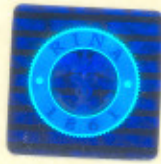
- Four-poles series connected circuit breaker type E1B/E-MS 12.

Circuit breaker type	E1B/E-MS 12		
Rated Voltage (Ue)	V	750	1000
Rated Current (In)	A	1250	1250
Ambient temperature	°C	45	45
Rated service short circuit breaking capacity (Ics)	kA	25	20
Rated ultimate short circuit breaking capacity (Icu)	kA	25	20
Rated short circuit making capacity (Icm)	kA	25	20
Time constant	ms	15	10

- Three-poles series connected circuit breaker type E1B/E-MS 12.

Circuit breaker type	E1B/E-MS 12	
Rated Voltage (Ue)	V	750
Rated Current (In)	A	1250
Ambient temperature	°C	45
Rated service short circuit breaking capacity (Ics)	kA	20
Rated ultimate short circuit breaking capacity (Icu)	kA	20
Rated short circuit making capacity (Icm)	kA	20
Time constant	ms	10





**TYPE APPROVAL CERTIFICATE**

No. **ELE328005CS**

Enclosure - Page 2 of 4

**Emax E-MS**

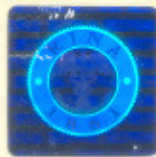
- Four-poles series connected circuit breaker type E2N/E-MS 20.

Circuit breaker type	E2N/E-MS 20		
Rated Voltage (Ue)	V	750	1000
Rated Current (In)	A	2000	2000
Ambient temperature	°C	45	45
Rated service short circuit breaking capacity (Ics)	kA	40	25
Rated ultimate short circuit breaking capacity (Icu)	kA	40	25
Rated short circuit making capacity (Icm)	kA	40	25
Time constant	ms	15	15

- Three-poles series connected circuit breaker type E2N/E-MS 20.

Circuit breaker type	E2N/E-MS 20	
Rated Voltage (Ue)	V	750
Rated Current (In)	A	2000
Ambient temperature	°C	45
Rated service short circuit breaking capacity (Ics)	kA	25
Rated ultimate short circuit breaking capacity (Icu)	kA	25
Rated short circuit making capacity (Icm)	kA	25
Time constant	ms	15





**TYPE APPROVAL CERTIFICATE**

No. **ELE328005CS**

Enclosure - Page 3 of 4

**Emax E-MS**

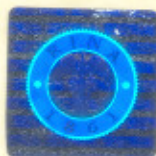
- Four-poles series connected circuit breaker type E3H/E-MS 32.

Circuit breaker type	E3H/E-MS 32		
Rated Voltage (Ue)	V	750	1000
Rated Current (In)	A	3200	3200
Ambient temperature	°C	45	45
Rated service short circuit breaking capacity (Ics)	kA	50	40
Rated ultimate short circuit breaking capacity (Icu)	kA	50	40
Rated short circuit making capacity (Icm)	kA	50	40
Time constant	ms	15	15

- Three-poles series connected circuit breaker type E3H/E-MS 32.

Circuit breaker type	E3H/E-MS 32	
Rated Voltage (Ue)	V	750
Rated Current (In)	A	3200
Ambient temperature	°C	45
Rated service short circuit breaking capacity (Ics)	kA	40
Rated ultimate short circuit breaking capacity (Icu)	kA	40
Rated short circuit making capacity (Icm)	kA	40
Time constant	ms	15





**TYPE APPROVAL CERTIFICATE**

**No. ELE328005CS**

**Enclosure - Page 4 of 4**

**Emax E-MS**

- Three-poles series connected circuit breaker type E4H/E-MS 40.

<b>Circuit breaker type</b>	<b>E4H/E-MS 40</b>	
Rated Voltage (Ue)	<b>V</b>	1000
Rated Current (In)	<b>A</b>	4000
Ambient temperature	<b>°C</b>	45
Rated service short circuit breaking capacity (Ics)	<b>kA</b>	65
Rated ultimate short circuit breaking capacity (Icu)	<b>kA</b>	65
Rated short circuit making capacity (Icm)	<b>kA</b>	65
Time constant	<b>ms</b>	15

**Genoa January 16, 2006**

