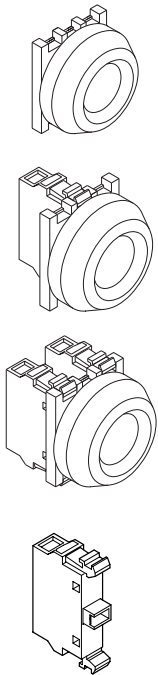




# ABB Heavy duty pushbutton, 30 mm

ABB Heavy duty pushbutton, 30 mm, is a robust and compact pushbutton for use in cold, hot, damped, oily and other tough environments. Suitable especially for hydraulic lifts, compact pendant controllers and pushbutton stations.

The pushbutton is very low with a built-in depth of only 29 mm. It has a sealing membrane for IP 66 protection. Suitable for PLC control (24V, 5.6 mA). The pushbutton is to be mounted in 30 mm holes.



## Heavy duty pushbutton

Included contact blocks:	Membrane colour:	Cat.No.	Weight, kg
–	Red ●	1SFA 616 105 R4001	0.022
–	Green ●	1SFA 616 105 R4002	0.022
–	Black ●	1SFA 616 105 R4006	0.022
1 NO + 1 NC	Black ●	1SFA 616 105 R4076	0.048
1 NO	Black ●	1SFA 616 105 R4016	0.035
1 NC	Black ●	1SFA 616 105 R4046	0.035
2 NO	Black ●	1SFA 616 105 R4026	0.048
2 NC	Black ●	1SFA 616 105 R4056	0.048

## Contact block

1 NO		SK 616 001-A	0.013
1 NC		SK 616 001-B	0.013

## Accessories

Guide washer for positioning and anti rotation	2154 373-1	0.003
--	------------	-------

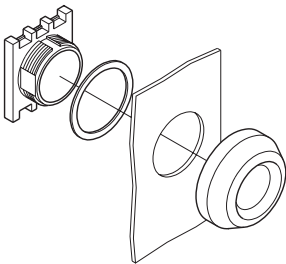
## Technical data - contact block

Rated insulation voltage $U_i$	V	660
Rated thermal current $I_{th}$	A	10
Rated operational current $I_e$ acc. to IEC 337	A	10
Utilisation category AC 11 at		
24 V	A	8
125 V	A	8
250 V	A	6
380 - 415 V	A	4
440 - 500 V	A	3
660 V	A	2
Utilisation category DC11 at		
24 V	A	10
48 V	A	6
110 V	A	2
220 V	A	0.7
440 V	A	0.3
Short circuit protection at maximum short circuit current 1kA max. fuse		16 A ordinary 10 A delayed
Connectible area, min.	mm <sup>2</sup>	0.5
max.	mm <sup>2</sup>	2 x 2.5

## Technical data - pushbutton

Degree of protection	IP66
Material:	
Outer membrane	EPDM rubber
Other details	Polyamide
Ambient temperature	-30°+..+70°

## Mounting



## Dimensions

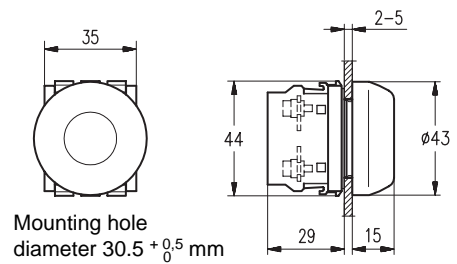


ABB Control AB  
S-721 61 Västerås, Sweden

Telephone +46 21 32 07 00  
Telefax +46 21 12 60 01

1SFC 261003-EN April 1998