

NOTES FOR SD-POCKET FOR PC

IMPORTANT

For the proper behaviour of SD-Pocket PC, any Bluetooth USB adapter supporting Widcomm classes should be used, and its drivers must be installed.

ADAPTER CONFIGURATION

For using the application and connecting to ABB SACE devices, the Bluetooth device installed on the PC must be configured for not requiring PIN code for secure connections.

Once the drivers and the communication SW adapter (provided with it) are installed, the PC must be restarted. Then click on Bluetooth connection icon and open “*Advanced Configuration*” page (see Figure 1).



Figure 1 – Bluetooth connection icon

Select tab “*Client Applications*” (Figure 2) and select “*Bluetooth Serial Port*”. Click “*Property...*” and deselect the option “*Secure Connection*” (Figure 3). Then click OK on all the following windows to save changes.

Restart the PC.

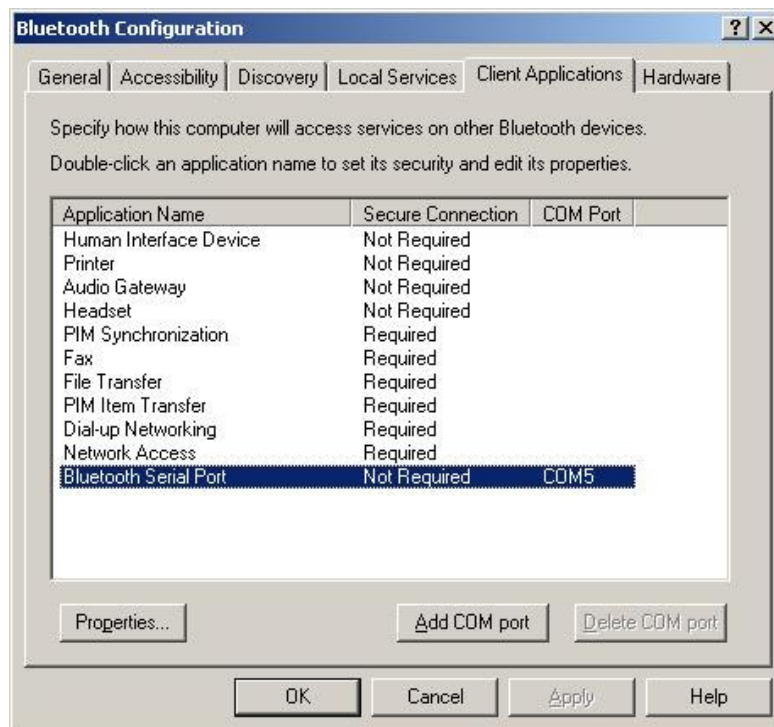


Figure 2 - Client Applications

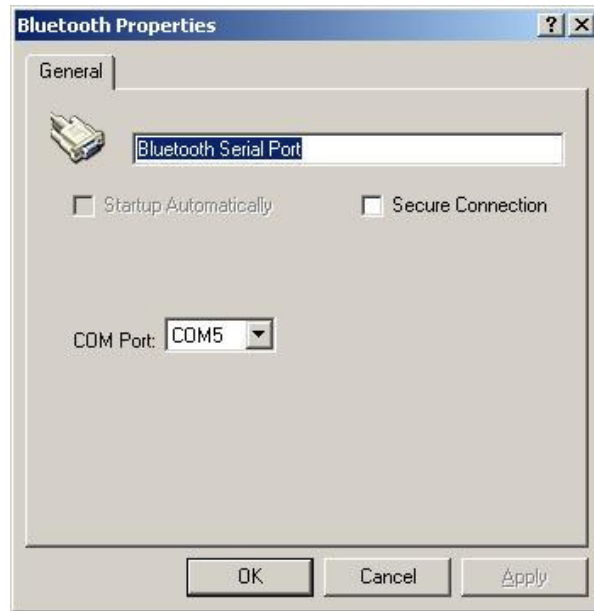


Figure 3 – Secure Connection