

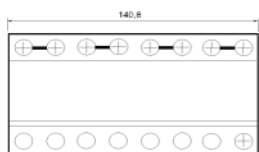
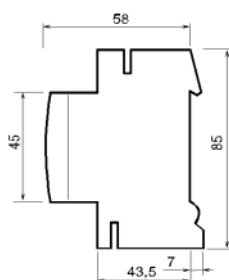


Limitor B TT

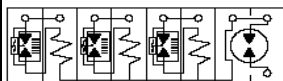
Order code : 2CTB 8151 01 R 21 00



Limitor B TT



Overall dimensions (in mm)



Operating diagram

Pluggable Unit

Electrical characteristics

Types of networks		TT
Number of poles		4
Type / test class		T1 / I
Type of current		A.C.
Nominal voltage Un	V	230
Maximal continuous operating voltage Uoc	V	255
Voltage protection level Up at In	kV	2.5
Nominal discharge current In (8/20)	kA	25
Impulse discharge current Iimp (10/350)	kA	25
TOV characteristic Ut (5s.)	V	334
Follow current If	kA	50
Operating current Ic	mA	< 1
Short circuit withstand Icc	kA	50
Degree of protection		IP 20
Load current Iload	A	125
Disconnecter		
gG - gL fuse	A	125

Mechanical characteristics

Wire range L/N		
solid wire	mm_	2.5 ... 50
stranded wire	mm_	2.5 ... 35
Stripping length L/N	mm	15
Tightening torque L/N	Nm	3.5
Wire range PE		
solid wire	mm_	2.5 ... 50
stranded wire	mm_	2.5 ... 35
Stripping length PE	mm	15
Tightening torque PE	Nm	3.5
Integrated thermal disconnecter		No
State indicator		No
Safety reserve		No
TS remote indicator		No

Miscellaneous characteristics

Stocking temperature	°C	-40 to +80
Operating temperature	°C	-40 to +80
Maximal altitude	m	2000
Weight	g	750
Material of Housing		Polyamide grey RAL 7035
Fire resistance according to UL 94		V2
Reference standards		IEC 61643-1 / EN 61643-11
Certifications		VDE

Wiring schematics