



CP600 series: scalable HMI from ABB

Your visualization for more flexibility

CP600 range

The new face of your AC500 PLC

The CP600 series, ABB's latest HMI, is now available at a larger range, starting from the entry level (4.3") to the high-end panel (15"). It is highly flexible and is specifically designed for advanced applications in complex systems or processes. Using premium graphic panels created with either the Panel Builder 600 engineering software or the web browser panels via the PLC Webserver, the CP600 series allow more effective representation of information to ease human machine interaction.

More Scalability

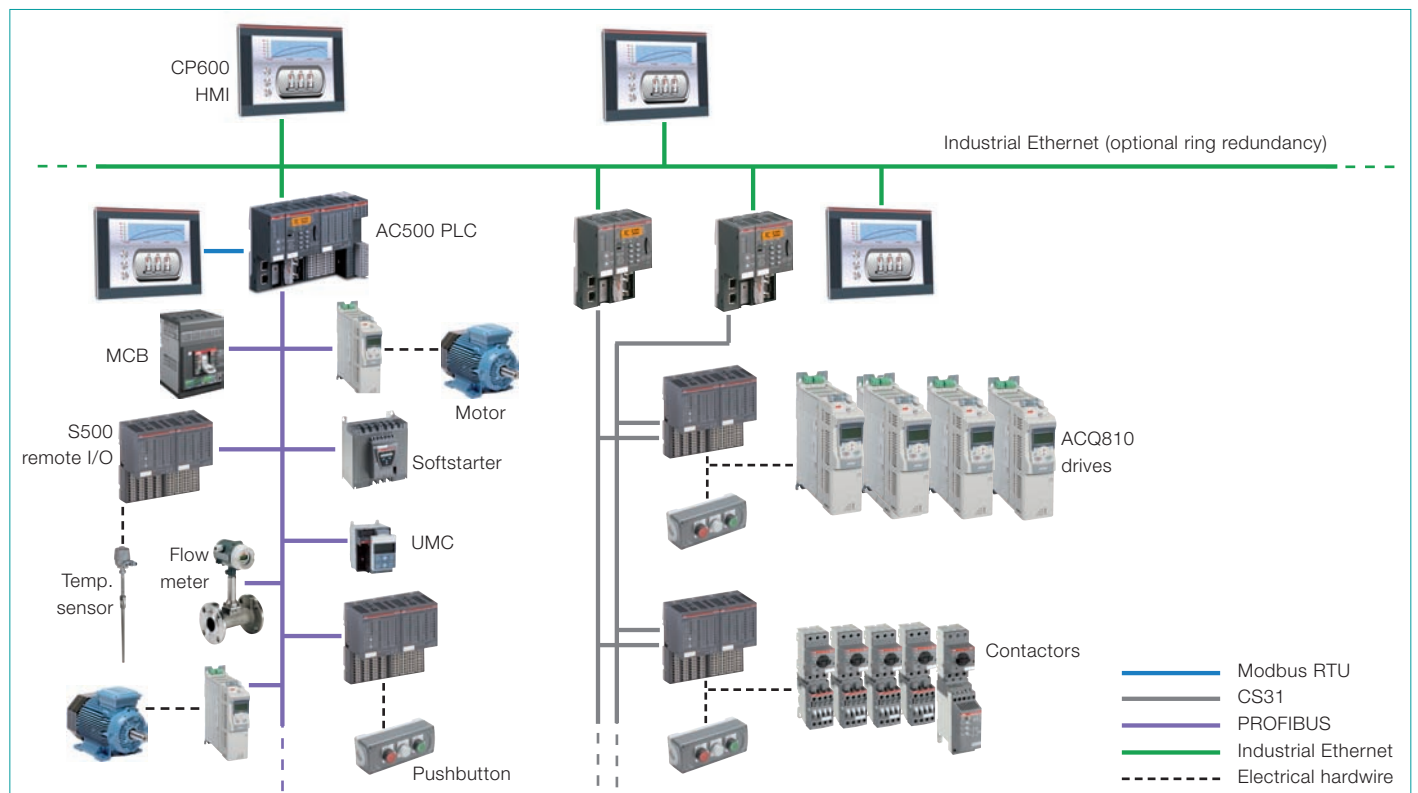
- The new HMI range is fully compatible with AC500 PLC reducing your implementation cost
- Importing the PS501 tags from AC500 programs into Panel Builder 600 to build a standardized system is simple
- The wide screen 16:9, Portrait & Landscape on CP620 or CP635 allows enhanced performance and user experience

More Productivity

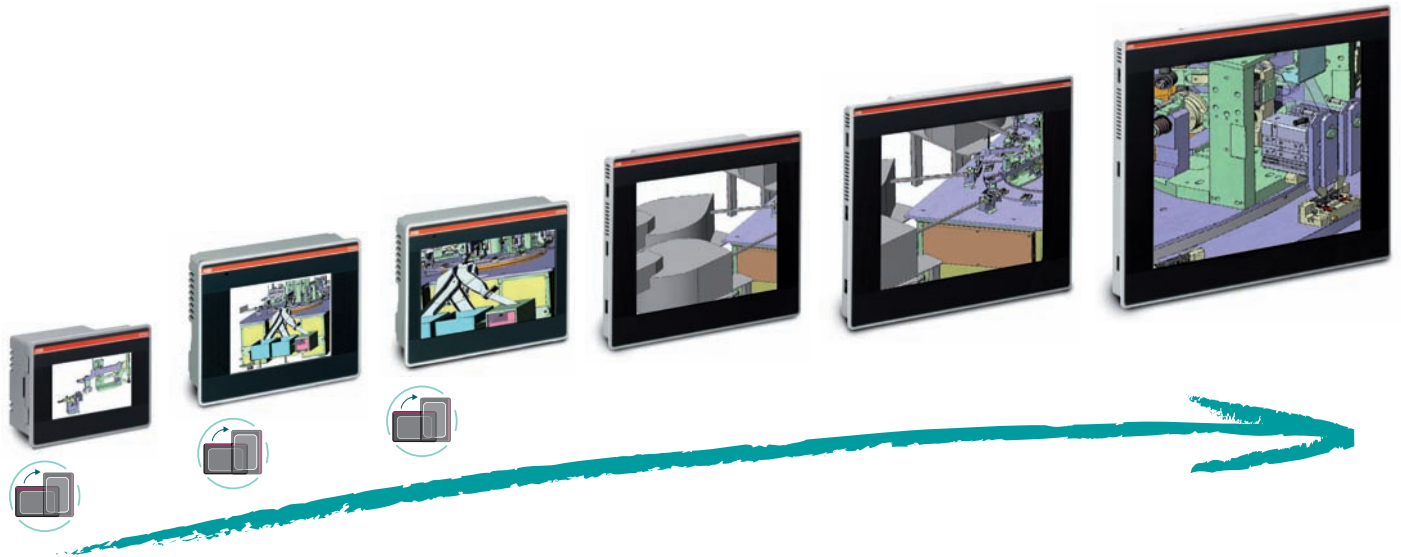
- Build effective graphic interfaces for efficient representation of your information
- Import pages by simply 'drag-and-drop' symbol from library, reducing development and maintenance costs with the user friendly software feature
- Server-client architecture provides remote control functionality with direct access to equipment, saving time and increasing efficiency
- Achieve a graphical visualization using the microbrowser from CP600-WEB Control Panel connecting to AC500 Webserver








Example of configuration within a water application



Whatever the environment, soft or tough, within industrial applications Appearance is extremely important



Highlights:

- Wide screen formats, complex operating screens can be clearly displayed and divided into sections for application control and application monitoring
- Panels can be installed upright  (in preparation)
- USB interface on side, for projects download without connecting a computer
- Easy commissioning: all Ethernet settings of the panel are made while configuring; simply insert the system card into another device to transfer data from one device to another.
- Marine approval to use your panels in many sectors and regions :  (DNV),  (C-Tick)
- Approvals : RoHS, , 



Save engineering time by using PS501 Control builder Plus for both your PLC and WebVisu



Panel Builder 600 software

The engineering software is based on the XML technology which allows you to create easy intuitive graphics. Visual objects created with the Scalable Vector Graphics (SVG) are totally independent of the operating system providing high customization flexibility and easy integration with your automation system easy creating dynamic objects with configurable properties, ability to interconnect objects, transformation or easy resizing, getting the most out of your creativity design. Get the most out of XML technology with panel builder 600 software.

Additional features of the CP600 Series:

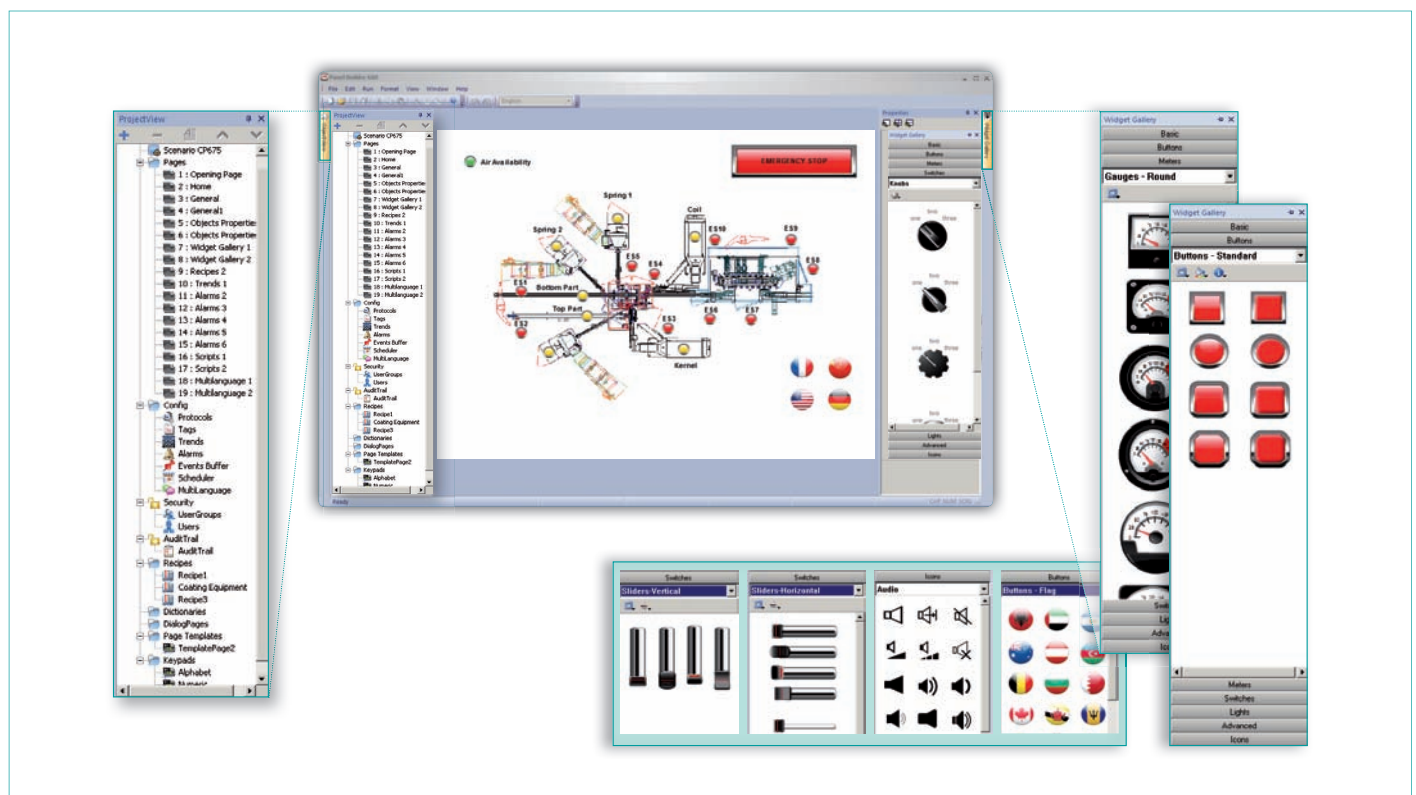
- Data acquisition and trend presentation
- 64k Colors
- User memory RAM 128 MB Flash Disk & 256 MB DDR
- Recipe data storage
- Multilanguage applications
- Powerful macro editor using Java script based on standard ECMA-262 execute widgets and pages events to get more capabilities
- Alarms and historical alarm list
- Eight level password protection
- Report printing to serial printer
- Vector graphic capabilities including the support of multiple layers and object transparency
- Data display in numerical, text, bargraph, analog gauges and graphic image formats. Dynamic object properties supported
- RSS feeds, rotating menu, scheduler.

Highlights:

- No creative limits
- Intuitive user guidance
- A common interface with Control Builder Plus, the AC500 PLC engineering software
- Integration within CoDeSys



Panel builder 600 software based on XML technology for your graphics creation



CP600 technical and order data

Technical data



		CP620 CP620-WEB	CP630 CP630-WEB	CP635 CP635-WEB	CP650 CP650-WEB	CP660 CP660-WEB	CP675 CP675-WEB
Size	inches	4.3"	5.7"	7"	10.4"	12.1"	15"
Protection class front		IP66					
Resolution		480 x 272	320 X 240	800 x 480	800 x 600	800 x 600	1024 x 768
Dimensions (L x H x D)	mm	149 x 109 x 56	187 x 147 x 51	187 x 147 x 51	287 x 232 x 46	337 x 267 x 46	392 x 307 x 50
Cut out	mm	136 x 96	176 x 136	176 x 136	276 x 221	326 x 256	381 x 296
CP600		Windows CE 6.0 with runtime licence for PB610 Panel Builder 600					
CP600-WEB		Windows CE 6.0 with microbrowser for AC500 WebServer					
Backlight		LED	LED	LED	LED	CCFL	CCFL
Upright installation*		Yes	Yes	Yes	No	No	No
Interfaces							
Ethernet ports number, type		2 - 100 Mbit (with integrated Switch function)			1 - 10/100 Mbit		
USB ports number, type		1 - host interface, version 2.0	2 - host interface, version 2.0	2 - host interface, version 2.0	1 - host interface, version 2.0		
Serial ports number, type		1 - RS-232, RS-485, RS-422, software configurable			2 - RS-232, RS-485, RS-422, software configurable		
Additional ports number, type		1 - Expansion slot for optional modules	2 - Expansion slot for optional modules	2 - Expansion slot for optional modules	1 - aux port		
Card slot number, type		1 - SD card slot			-		
User memory		128MB FlaDsk					
RAM		256 MB DDR					

* in preparation

Order data

HMI panels CP600 series

Type	Resolution	Display size	Display type	Order code	Weight per piece kg
CP600					
CP620	480 x 272	4.3"	64k colors TFT, touch	1SAP 520 100 R0001	0.950
CP630	320 x 240	5.7"	64k colors TFT, touch	1SAP 530 100 R0001	1.150
CP635	800 x 480	7.0"	64k colors TFT, touch	1SAP 535 100 R0001	1.100
CP650	800 x 600	10.4"	64k colors TFT, touch	1SAP 550 100 R0001	2.100
CP660	800 x 600	12.1"	64k colors TFT, touch	1SAP 560 100 R0001	2.900
CP675	1024 x 768	15.0"	64k colors TFT, touch	1SAP 575 100 R0001	3.800
CP600-WEB					
CP620-WEB	480 x 272	4.3"	64k colors TFT, touch	1SAP 520 200 R0001	0.950
CP630-WEB	320 x 240	5.7"	64k colors TFT, touch	1SAP 530 200 R0001	1.150
CP635-WEB	800 x 480	7.0"	64k colors TFT, touch	1SAP 535 200 R0001	1.100
CP650-WEB	800 x 600	10.4"	64k colors TFT, touch	1SAP 550 200 R0001	2.100
CP660-WEB	800 x 600	12.1"	64k colors TFT, touch	1SAP 560 200 R0001	2.900
CP675-WEB	1024 x 768	15.0"	64k colors TFT, touch	1SAP 575 200 R0001	3.800

Accessories for CP600 series

Type	Description	Order code	Weight per piece kg
TK681	Communication cable RS232: CP600-AC500	1SAP 500 981 R0001	0.130
TK682	Communication cable RS485: CP600-AC500 / CP600-AC500-eCo	1SAP 500 982 R0001	0.130
PB610	Panel Builder for CP600	1SAP 500 900 R0001	0.070

Contact us

ABB Automation Products GmbH

Wallstadter Str. 59

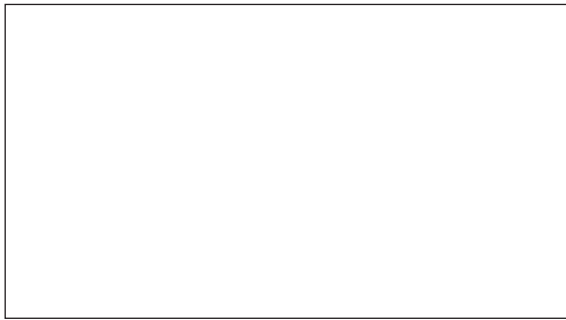
68526 Ladenburg / Germany

Tel. : +49 62 21 701 1444

Fax : +49 62 21 701 1382

E-Mail : plc.sales@de.abb.com

www.abb.com/plc



As part of its on-going product improvement, ABB reserves the right to modify the characteristics or the products described in this document. The information given is not-contractual. For further details please contact the ABB company marketing these products in your country.

ABB Global Contact Directory

The ABB Contact Directory (<http://www.abb.com/contacts/>) helps you find local contacts for ABB products in your country.

Please select the relevant product group from the dropdown menu to the right or from the page.