



ATEX technical instructions sheet for safe mounting



Terminal blocks **entrelec**[®]

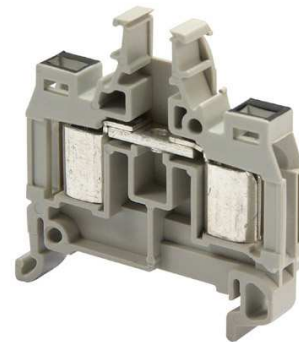
Compression clamp terminal blocks

Feed through & Ground

D2.5/8.ADO.Ex range

Ordering part numbers

Feed through	Grey	1SNA 146 038 R2300
	Blue	1SNA 146 039 R2400
	Yellow	1SNA 146 144 R2200
Ground	Green/yellow (With rail contact)	1SNA 146 041 R2600





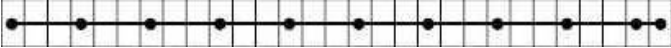

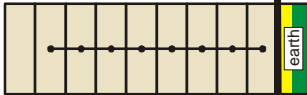
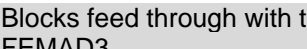
Connecting capacity

Rated cross-section	2.5 mm ²
Min solid wire	1 mm ²
Max solid wire	2.5 mm ²
Min flexible wire	1 mm ²
Max flexible wire	2.5 mm ²

EC Type examination certificate	Group category	Protection method
LCIE 02 ATEX 0021U	I M2	} Ex e: increased security
Supplementary EC Type examination certificate	II 2GD*	
LCIE 02 ATEX 0021U / 01	I M1	} Ex i: intrinsic security
	II 1GD*	

*: in the presence of explosive dust atmospheres, terminal blocks are to be installed in certified enclosure II2D

Temperature of service	-55°C + 85°C
Temperature increase (IEC 947-7-1)	Maximum 45k
Insulating material	PA 6.6
IRC	600
Flammability (UL94)	V0
Rated current (IEC 947-7-1)	24 A
Dissipated power	0.8 W

Maximum voltage	Increased security (EN 60079-7)	Intrinsic security (EN 60079-11)
Blocks in rows 	420V	90V
Blocks feed through & ground in rows 	420V	90V
Blocks feed through in rows with jumper bar BJS8... with alternate jumpering 	400V	/
Blocks feed through in rows with jumper bar BJM (Frontal, without screw) separated with end section FEDAD3 	275V	90V
Blocks feed through & ground in rows, with jumper bar BJM separated with end section FEDAD3 	275V	90V
Blocks feed through with test plug FC2 and end section FEMAD3 	420V	190V