



ABB Inc.
7036 Snowdrift Road
Allentown, PA 18106 USA
Tel 610-395-7333
Fax 610-395-1055

INSTRUCTIONS

How to use WinFPI to download flash in to a 2000R relay

1. Prior to all flash firmware procedures, upload and save to file all 2000R settings using WinECP.
2. Connect the communication cable to the front communications port. Use a standard 9 pin cable with a null modem connector for ALL 2000Rs except the OCI version.
3. Open WinFPI. This can be accessed from within WinECP at File, WinFPI or from the desktop Start, Programs, ABB Applications, WinFPI.

FPI status, version 1.01

File Relay Advanced Help

Relay Port Boot ROM

Monitor Version: Unknown

Class Type: Class 2000R

Unit Type: Unknown

App Version: Unknown

Style: Unknown

Current Relay Status: DISCONNECTED

File Info:

Name: [] Browse...

Class Type: [] Unit Type: []

App Version: [] Style: []

Current Communication:

PC Port: COM1

Baud Rate: 9600

Frame: None, 8, 1

Relay Address: 1

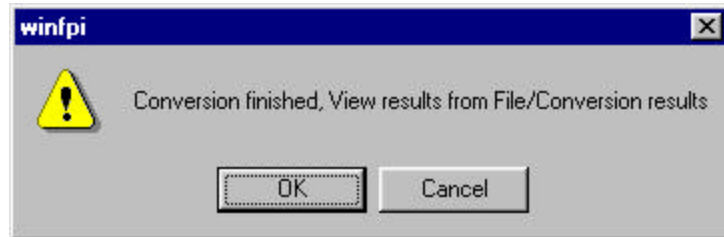
Catalog: Unknown

DownLoad

EXIT

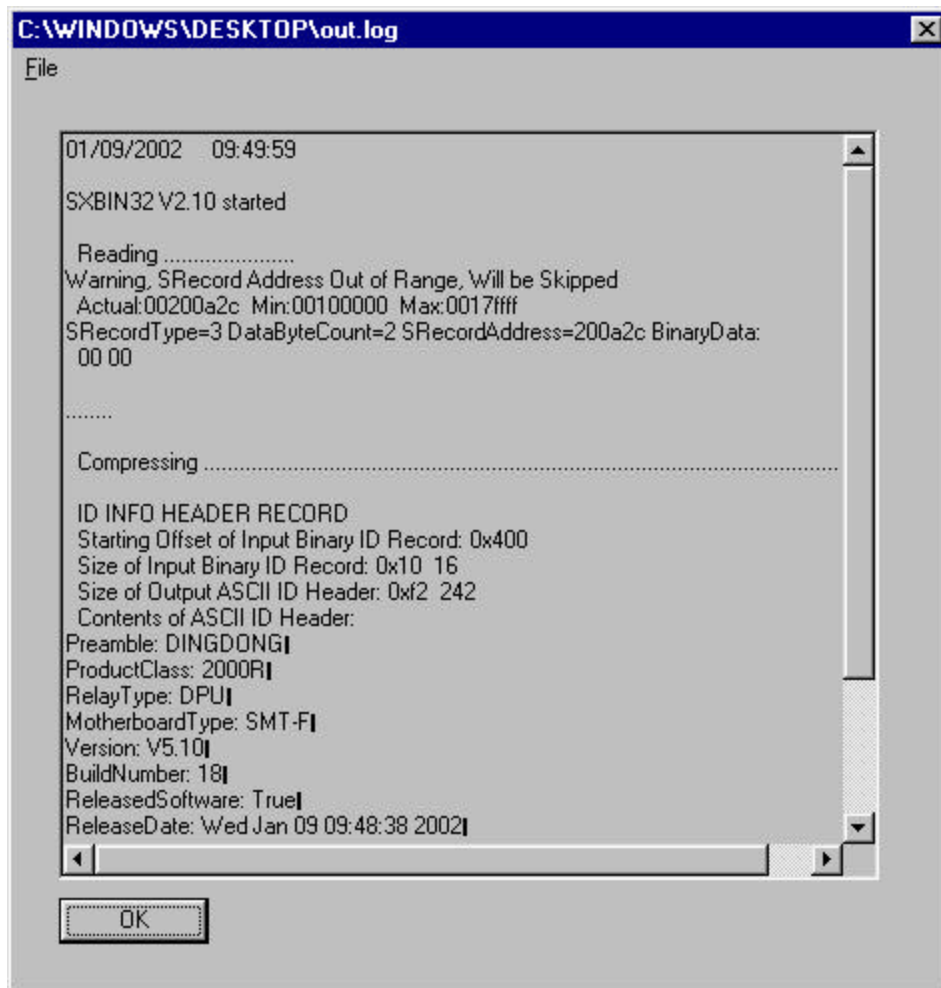
4. Verify that the settings in the “Current Communication” settings box are set for proper communication with the relay.

5. Select the appropriate file to download to the relay. This file must have the “.cbi” file extension. If it has the “.abs” extension, then go to step 6. If it is a “.cbi” file then proceed to step 7.
6. From the WinFPI main menu bar, click on “File” and select “Compress S-Record File”. A “Select S-Record File” box will pop up. Select the appropriate .abs file and press Open. The

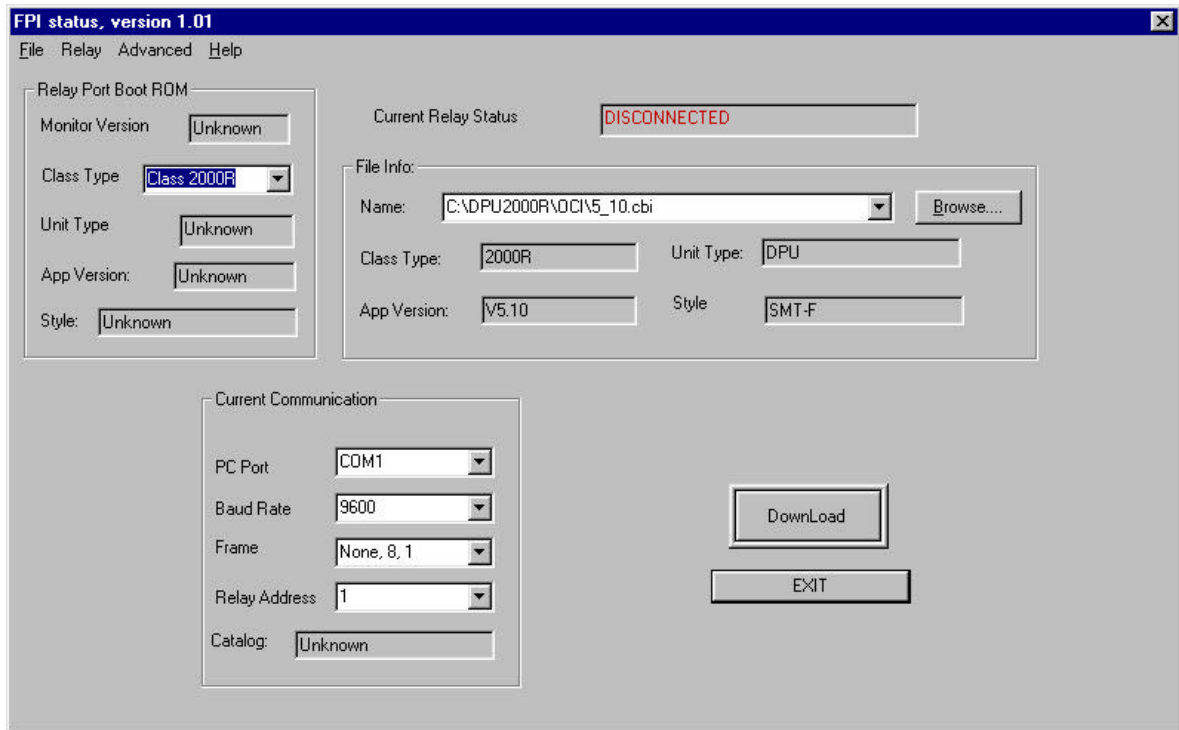


compression will take 2-3 seconds and the following box will appear.

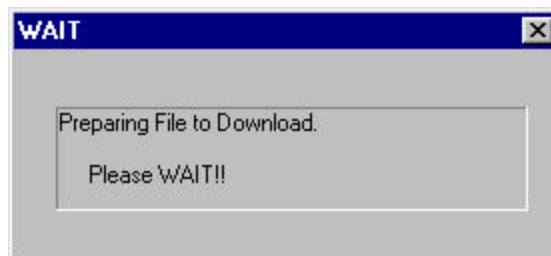
Press OK, then “out.log” box will appear:



Press OK.



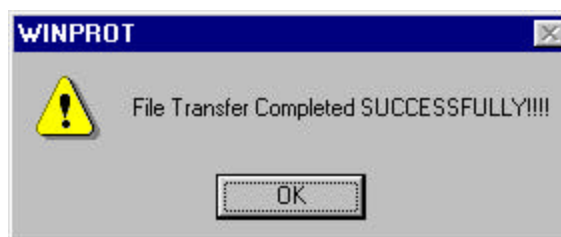
7. Once the .cbi file is selected, press the “DOWNLOAD” button.
8. A “WAIT” box will appear and relay will reset itself and start the download process. “2000R Monitor” will be shown on first line of display.



9. The first step is the erasing of the old flash. The display will show “Flash Memory Erase in Progress”, Then “Flash Memory Erase is Completed”. This step takes about 5 seconds.
10. The next step is the downloading of the new flash. The display will show “XMODEM DOWNLOAD DOWNLOADING”.

(During steps 8 and 9, a “WAIT” box will be shown in the lower taskbar. This can be maximized. It will show a status bar.)

11. When the download has been completed, the following box will appear:



Press OK. The relay will show “preparing to Run Application” on the display. The relay will then reboot and show “Self Test Failure” in the bottom line of the display and the Normal LED will be off.

12. Hit System Reset on the 2000R relay. (Note on OCI DPU2000R units, System Reset is accomplished by pressing the function keys F4 and F5 simultaneously for one second.) This will reset the relay and return it to a normal state

Note: The “Self test Failure” message is caused by a new feature that has been added. There is now a clock battery check. Since the NVRAM is now cleared out, when the relay reboots, it checks the value of the clock battery in NVRAM and finds it is zero. The relay then checks the clock battery and puts this value in NVRAM. When the relay is reset, it now has a value to check and returns to a normal state.

The NORMAL LED will now be on. The relay is now ready to be used.