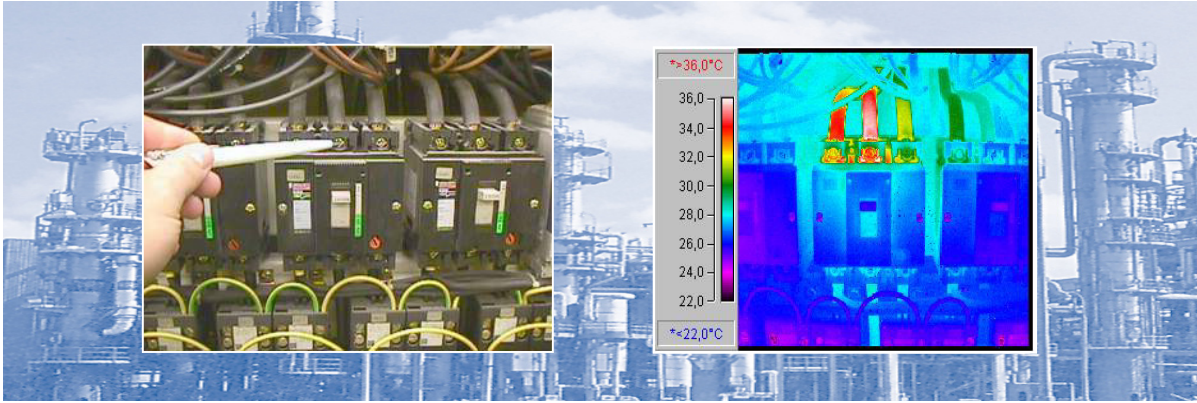


Thermal Diagnosis

For the early detection of weak points and faults in electrical machines and installations



Inspection of electrical installations

Thermography is an image-producing, objective method of measurement for securely ascertaining surface temperatures without contact. With this method of measurement, weak points in electrical equipment can be detected in a very short space of time.

Thermography: when and how often?

The Property Insurance Association (Verband der Sachversicherer VdS) recommends :

- Giving new installations or plant areas an initial inspection in order to detect assembly defects as potential sources of errors at once.
- Regularly checking existing installations. The inspection cycle depends on the demands on the installations and the results of the previous thermographic inspection.
- Thermographic inspections should be performed annually, if possible in connection with mandatory repeat tests of electrical installations.

Advantages of thermal diagnosis

- Reduction of fire and accident risk
- Documentation of installation states and potential risks
- Early detection of weak points or faults
- Increased installation availability and reliability
- Avoidance of consequential damage

Fields of application for thermography

- Electrical machines and drives
- Transformers of all voltage classes and voltages
- Low, medium and high-voltage switching equipment
- Electrical equipment in mobile devices
- Cable installations, rail systems, overhead lines



This service is a Class 2 module, “product-related, customized services”, in ZVEI classification.



ABB Automation GmbH
Service Drives
Kallstadter Straße 1
68309 Mannheim
GERMANY
Phone: +49 (0)180 5 123 580
Fax: +49 (0)621 381 5135
www.abb.de/service