

SAMI STAR Interactive Repair Guide

Repair/fault tracing guide for SAMI STAR frequency converters



SAMI STAR Interactive Repair Guide helps service personnel in getting fast and direct information in SAMI STAR fault situations.

SAMI STAR Interactive Repair Guide is implemented with Adobe Acrobat. You can use it with any PC which is able to run Adobe Acrobat Reader (program included).

Three different configuration options:

SAMI STAR – Selma - PC

SELMA automation system listens to different SAMI STAR converters and sends the fault information to your PC through serial communications. The PC acknowledges the fault and the faulty drive. This option is implemented as a customer specific project.

SAMI STAR - PC

SAMI STAR converter sends the fault information directly to your PC. The PC acknowledges the fault and alerts the user. This option requires one free COM port on the computer.

The package includes the software, the set-up instructions and a Black Box converter that is required in connection to SAMI STAR.

Stand alone

SAMI STAR Repair Guide helps in general repair situations with flowchart fault-tracing instructions.

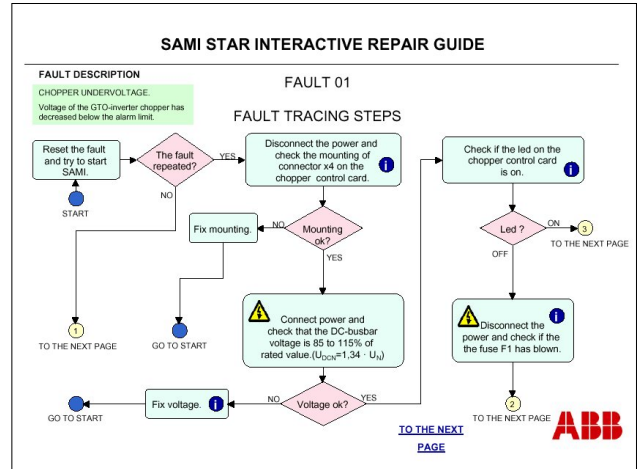
This option includes a flowchart fault-tracing instruction CD-rom.



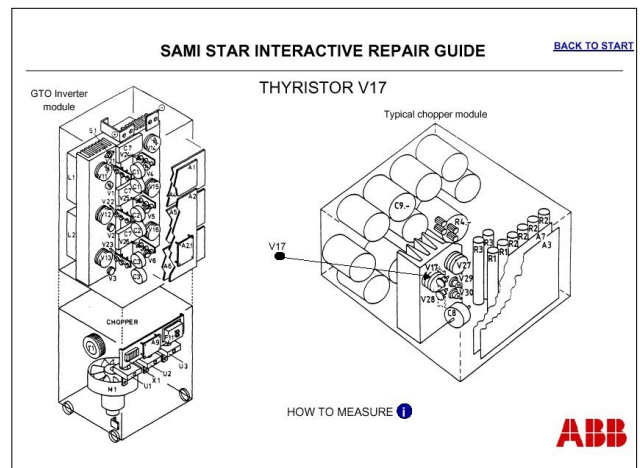
When the program is started, it opens the fault list window (stand-alone version), where the user can choose the repair instructions needed. With the serial communications version, the software directly opens the correct repair instruction for the fault situation.

The program consists of numerous fault tracing instructions, component pictures, component measuring instructions, etc.

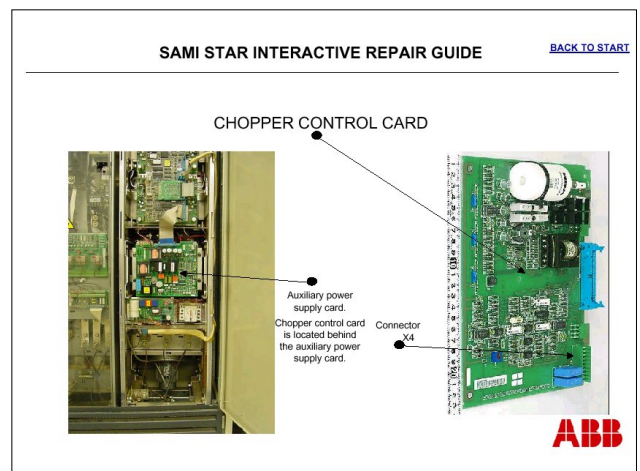
Some examples of SAMI STAR Repair Guide screens.



Fault tracing window represents comprehensive flowchart tracing instructions.



Component information window displays important information of the different SAMI STAR components.



Component image window provides visual information of components and their locations.

