

Training Power Electronics Your Knowledge. Your Power.

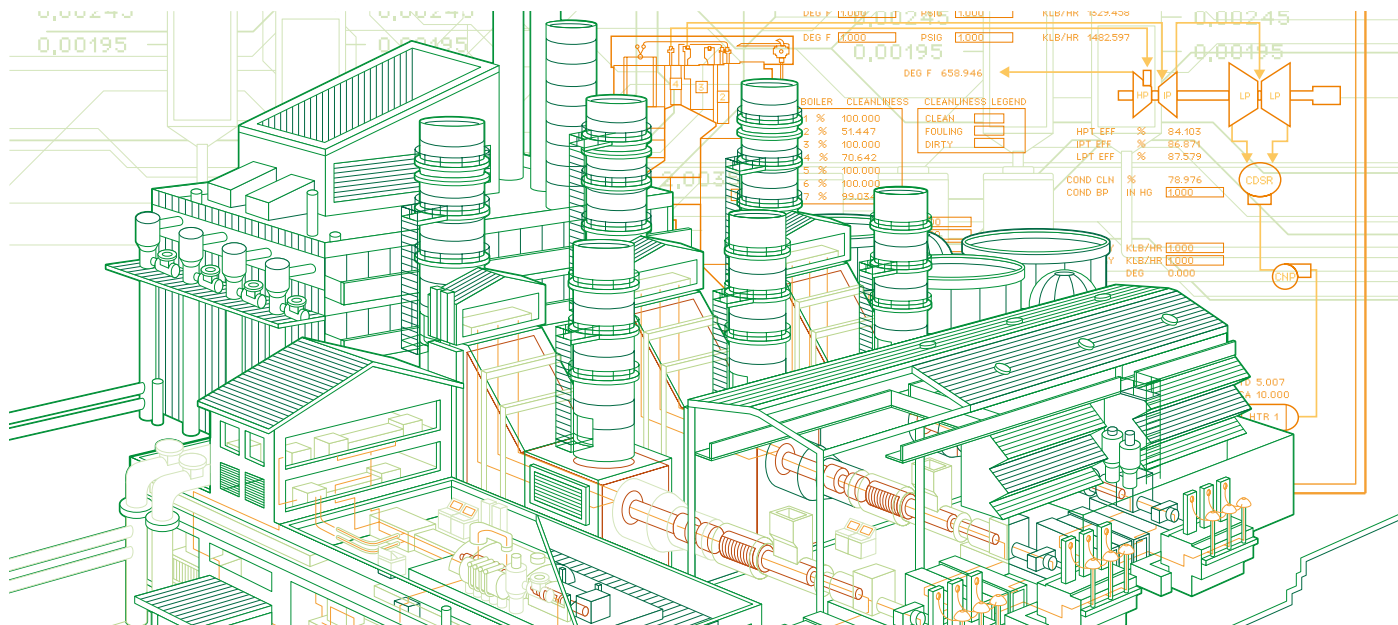


ABB is a leading supplier of Power Electronic systems. The extensive experience and history of innovation helps customers around the world to improve plant performance and production.

Customer awareness means that ABB is committed to support customers worldwide in their plans for growth. ABB offers a wide range of professional training courses adapted to meet the needs of their customers.

Benefits of the training

The training courses support our customers to increase their return of investment, reduce down time and improve the skills and motivation of their personnel.

- Training participants profit from our extensive experience and modern training infrastructures which enable them to:
- efficiently operate and maintain ABB Power Electronic systems
- troubleshoot problems faster
- extend the lifetime of the ABB Power Electronic systems

Education profile

ABB Power Electronics training courses are offered as standard versions or specifically tailor made to meet the needs and know-how of our customers.

Our operation and maintenance courses are aimed to qualify customer maintenance engineers to do first level support of ABB Power Electronic systems. The main course goal is to learn how to operate, maintain and troubleshoot ABB Power Electronic systems.

Upon completion of the course, customers will be able to locate and identify hardware components, download fault loggers and important information for first analyses by support personnel, replace parts and to perform preventive maintenance.

The trainees will gain practical experience in troubleshooting using available tools and techniques through organized practical exercises.

Training locations

ABB Power Electronics trainings are conducted in our well-equipped Learning Center in Switzerland by high-qualified instructors.

Apart from our standard training courses according to fixed schedules, we also offer tailor made trainings on-site at customer's premises.

Training Course list

ABB equipment	Course	Target Group	Duration
AC 800PEC	J400 AC 800PEC H&T	Application, Test and Service and Commissioning Engineers	2
	J410 AC 800PEC Control Builder	Application engineers, programmers and system integrators	5
AC 800PEC Matlab/Simulink	J450 AC 800PEC Matlab/Simulink	Application, Test and Service and Commissioning Engineers	3
FOCS	J251 FOCS Level 1 + 2	Application, Test and Service and Commissioning Engineers	2
High Power Rectifier	J220 High Power Rectifier System O&M	Operation & maintenance engineers, electricians and technicians	4
Power Electronics Monitor	J290 PES Monitor	Operation & maintenance engineers, electricians and technicians	2
PSR/FUPLA2	J950 PSR2/FUPLA2 Programming	Project design and commissioning engineers	5
		Testing engineers, who use a standardized PSR system	
SYNCHROTRACT 4 + 5	J940 SYNCHROTRACT 4 O&C	Project design, commissioning, instrumentation and control engineers,	2
	J900 SYNCHROTRACT 5 O&C	Operating, testing and maintenance personnel	
Static Var Compensator	J240 SVC O&M	Operation & maintenance engineers, electricians and technicians	4
UNITROL Basics	J990 Excitation Systems and Synchronous Machines Fundamentals	Operating, testing and maintenance personnel	2
UNITROL 1000	J130 UNITROL 1000 S&C	Operation & maintenance engineers, electricians and technicians	3
UNITROL 5000	J620 UNITROL 5000 O&M	Operation & maintenance engineers, electricians and technicians	4
UNITROL 6800	J683 UNITROL 6800 O&M	Operation & maintenance engineers, electricians and technicians	5
UNITROL 6080	J684 UNITROL 6080 O&M	Operation & maintenance engineers, electricians and technicians	5
UNITROL P	J320 UNITROL P O&M	Operation & maintenance engineers, electricians and technicians	3
UNITROL F	J520 UNITROL F O&M	Operation & maintenance engineers, electricians and technicians	3
other UNITROL Types	O&M	Operation & maintenance engineers, electricians and technicians	on request

Training course information and registration

Information on training courses such as course descriptions, prices, schedules and registration forms can be found through our **course locator** on the ABB University web portal: www.abb.ch/abbuniversity

For more information please contact:

ABB Switzerland Ltd

Power Electronics

CH-5300 Turgi / Switzerland

Phone: +41 58 589 38 09

Fax: +41 58 589 20 90

E-Mail: pes@ch.abb.com

www.abb.com/powerelectronics