

AutoLink

Single or three-phase electronic sectionalizer

The AutoLink electronic sectionalizer offers an economical solution for critical problems that all utilities face today.

Overview

With this new era of innovative smart grid technology, few products are ready out of the box, easy to install, and simple to maintain in the field. The AutoLink fits all three categories while performing as an effective tool for sectionalizing overhead distribution lines. This efficacy comes as utilities face constant pressure to:

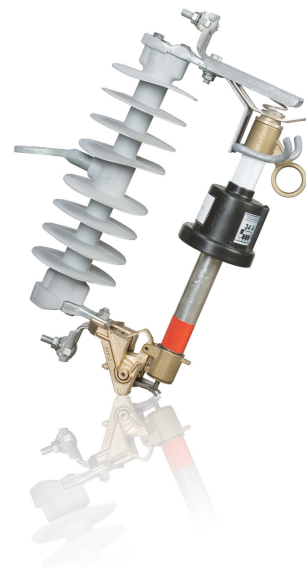
- Increase grid reliability
- Reduce grid maintenance costs
- Minimize product inventory
- Improve customer satisfaction

Increase grid reliability

In overhead electric distribution, 80-90% of faults are temporary and can be cleared by the upstream recloser or breaker. Combining innovative technology with a traditional mindset, the AutoLink operates in the same way as an expulsion fuse cutout. Unlike cutouts, however, configurable actuating current (6 – 215 A) and operation counts (1 – 4 counts) allow the AutoLink to work in conjunction with the upstream recloser by counting the tripping operations to clear temporary faults and sectionalize permanent faults. This symbiotic relationship transforms the grid into an electricity delivery resource that the utility and their customers can depend on. When combining the AutoLink with a recloser, even permanent faults become much more manageable.

Reduce maintenance costs

With the number of necessary outages reduced by 80-90%, the AutoLink reduces the need to dispatch maintenance crews to address grid issues in the field. When the AutoLink operates, its “drop-down” manner makes it easy for field staff to identify fault-affected overhead lines. The method to reset the AutoLink is even easier and requires no tools, as well as no replacement of the actuator. In cases when a permanent fault does occur, maintenance crews can respond quickly and efficiently to significantly decrease downtime, thus minimizing costs and boosting customer satisfaction.



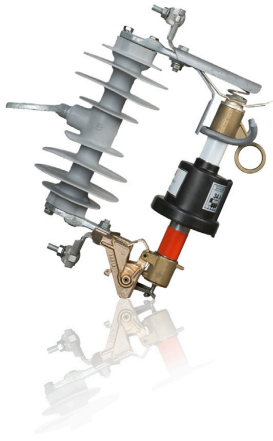
Minimize product inventory

The AutoLink is designed for installation in place of the fuse holder on traditional fused cutout mounts. Its configurable settings using under-the-cap dip switches allow for the need of only one AutoLink device in stock to be used for all values of current per voltage rating. Worrying about the proper coordination between fuse and recloser is no longer necessary. For automatic tripping of each phase, the three-phase AutoLink is a desirable option.

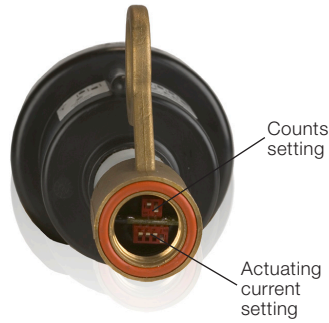
Improve customer satisfaction

The formula for satisfied customers is equal to the consistent delivery of power; therefore, unnecessary power outages are highly undesirable. The AutoLink prevents this occurrence with its low dead line detection value of below 200 mA. This ensures operation only when the distribution line has been sectionalized by the recloser. In addition, the electronic circuit within the AutoLink discriminates, in less than one cycle, between a transformer inrush current and a fault current. As a result, the AutoLink effectively assists utilities in lifting the burden of unnecessary power outages.

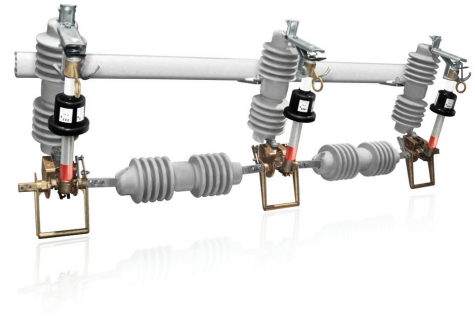
Product offerings and features



Single-phase AutoLink

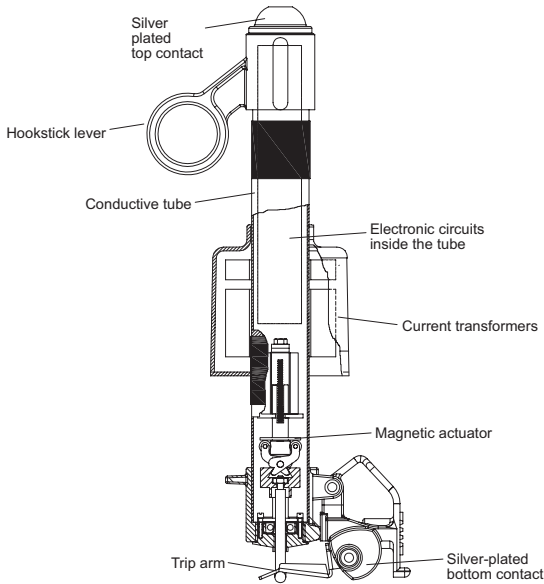


Configuration settings



Three-phase AutoLink

Physical description



For more information please contact:

ABB S.A.

Jose I. Rucci 1051
(B1822CJU) - Valentin Alsina
Buenos Aires - Argentina
Phone: + 54 11 4229 5500

ABB Inc.

Medium Voltage Distribution Components
3022 NC 43 North
Pinetops, NC 27864
Phone: +1 252 827-3212
Fax: +1 252 827-4286

www.abb.com/mediumvoltage

Note:

We reserve the right to make technical changes or modify the contents of this document without prior notice. With regard to purchase orders, the agreed particulars shall prevail. ABB does not accept any responsibility whatsoever for potential errors or possible lack of information in this document. We reserve all rights in this document and in the subject matter and illustrations contained therein. Any reproduction—in whole or in parts—is forbidden without ABB's prior written consent.

May not be available in all markets.

Copyright 2011 ABB.
All rights reserved.