

Catalogue  
NN1/14.01-E

Manual operating mechanism  
type NN1 for disconnectors  
type ONI...-2 and ONIII...-2

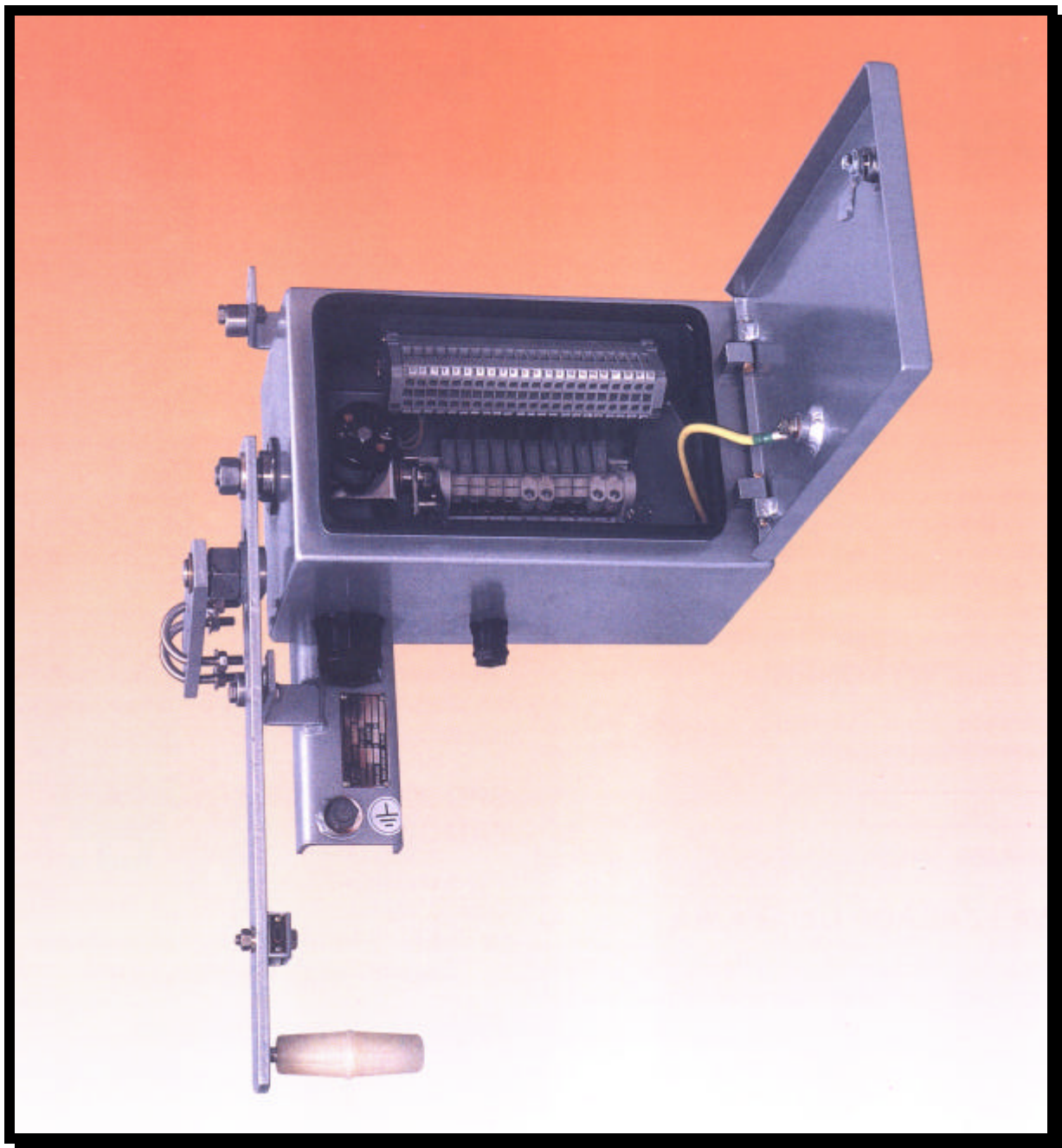


ABB Zwar S.A.

**ABB**

## 1. FEATURES

- Simple design, service and mounting.
- Small sizes.
- High quality, corrosions-proof
- Can be equipped with padlock
- Blocking magnet
- Auxiliary contacts

## 2. APPLICATION

The manual-operating mechanism type NN1 is designed for outdoor installation and used for the manual operation of disconnectors type ONI, ONIII which are produced in ABB Zwar S.A. in Poland.

## 3. SERVICE CONDITONS

The manual-operating mechanism type NN1 can be used for outdoor installation according to undermentioned conditions:

|                             |                   |
|-----------------------------|-------------------|
| <u>ambient temperature:</u> |                   |
| - maximum                   | 313K (+40°C)      |
| - average (within 24 h)     | up to 308K(+35°C) |
| - minimum                   | 243K (-30°C)      |
| wind pressure               | up to 700 Pa      |

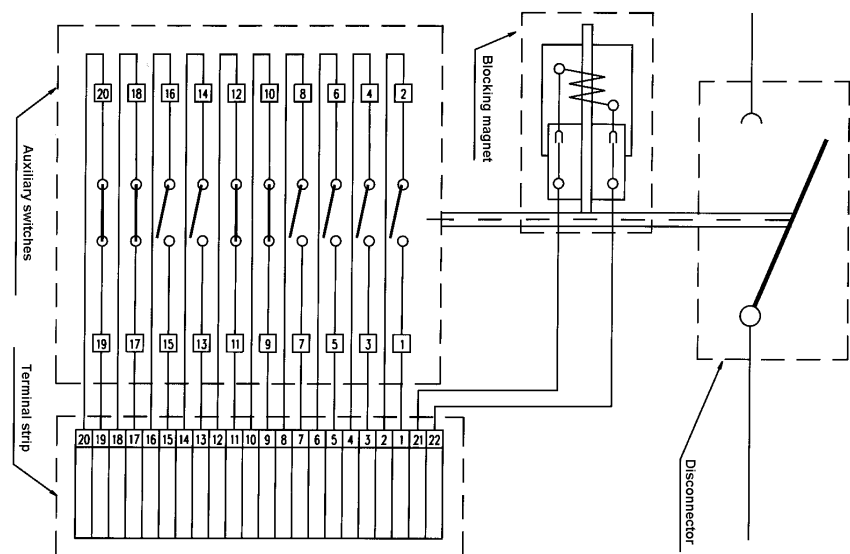
## 4. TECHNICAL DATA

| No.                                       | Designation  | Value   |
|---|--|---|
| 1.  | Maximum force of manual-operate  | 300 N   |
| 2.  | Stroke of operating rode   | 104/142/186 mm                                |
| 3.  | Angular rotation of hand-crank   | 188 °   |
| 4.  | Weight   | 12 kg   |
| 5.  | Degree of protection against contact with live or moving parts ingress of foreign bodies and water   | IP43  |
| <b>Technical data of auxiliary switch</b> |  |   |
| 6.  | Number of auxiliary switches   | 10  |
| 7.  | Nominal voltage of auxiliary switch  | 220 V DC;AC                                   |
| 8.  | Switching capacity at 220 V:<br>- In almost no inductive circuit<br>- at time constant of circuit T=20 ms<br>- at time constant of circuit T=20 ms (two switches in serial connection) | 5 A<br>0,7 A<br>2,2 A                         |
| <b>Technical data of blocking magnet</b>  |  |   |
| 9.  | Nominal voltages:<br>- type BEX<br>- type BEXa   | 24, 48, 60, 110, 220 VDC<br>110, 125, 220 VAC |

Attention: We have the right to change the construction as a consequence of technical development.

### Electrical circuit diagram of operating mechanism type NN1

- The number of normal open and normal close auxiliary switches can be change.

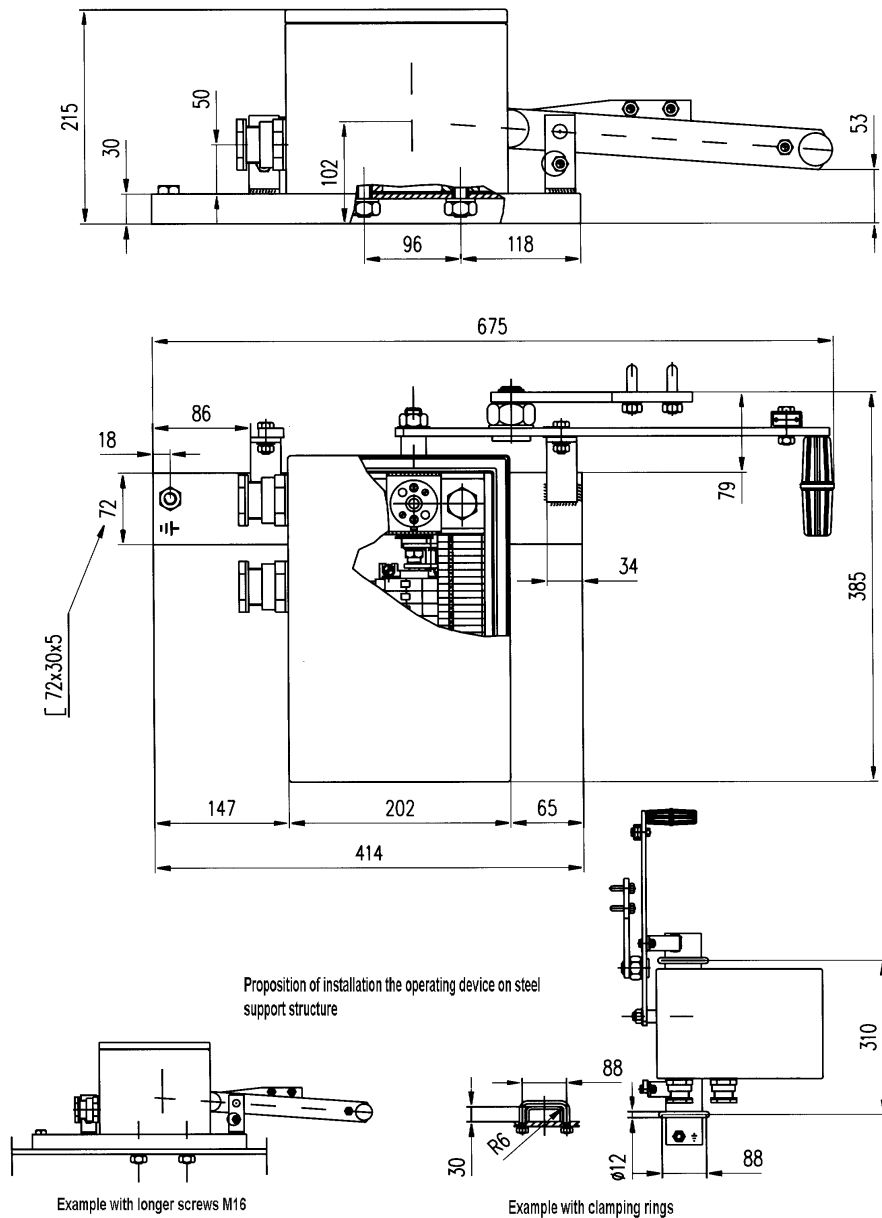


## 5. EXAMPLE OF THE ORDER

One manual-operating mechanism type NN1 equipped with:

- Blocking magnet type BEX 220 V DC
- Number of auxiliary switches 5NO+5NC
- Length of operating rod 8 m

## 6. DIMENSION DRAWING



# ABB

ABB Sp. z o.o.  
ul. Bitwy Warszawskiej 1920r. nr 18  
Division ZWAR in Przasnysz  
address: 59, Leszno Str.  
06 - 300 Przasnysz  
Phone: +48 22 51 52 838  
+48 22 51 52 831  
Fax: +48 22 51 52 659  
e-mail: [export.plzwa@pl.abb.com](mailto:export.plzwa@pl.abb.com)