

ZX1.2 - Offshore
Gas-insulated
medium voltage switchgear

ZX1.2 - Offshore Gas-insulated medium voltage switchgear



The connection is what counts

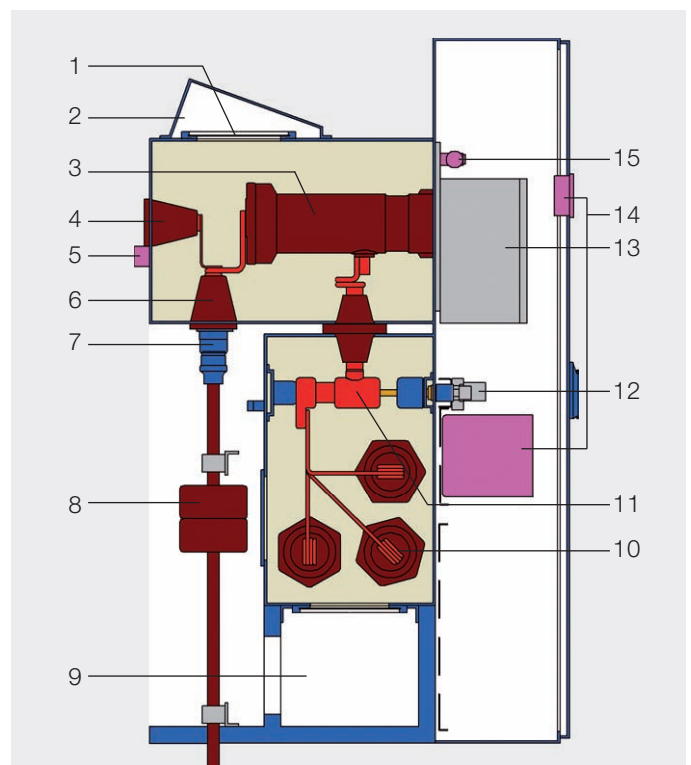
Offshore wind farms feed their power into the grid via submarine cables, and the switchgear in the tower has to be optimally suitable for their connection.

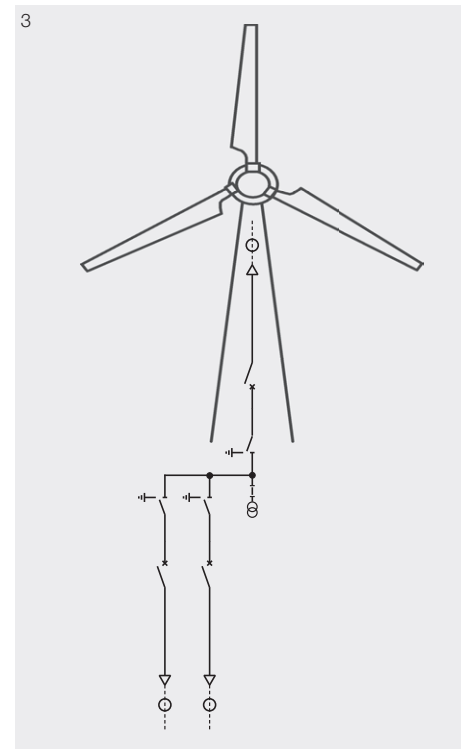
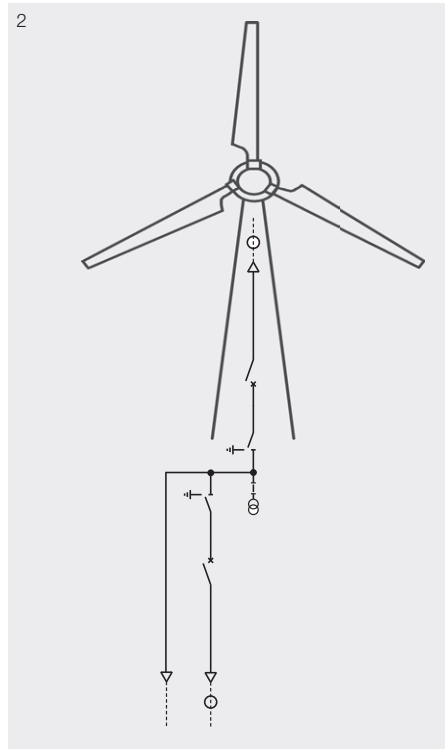
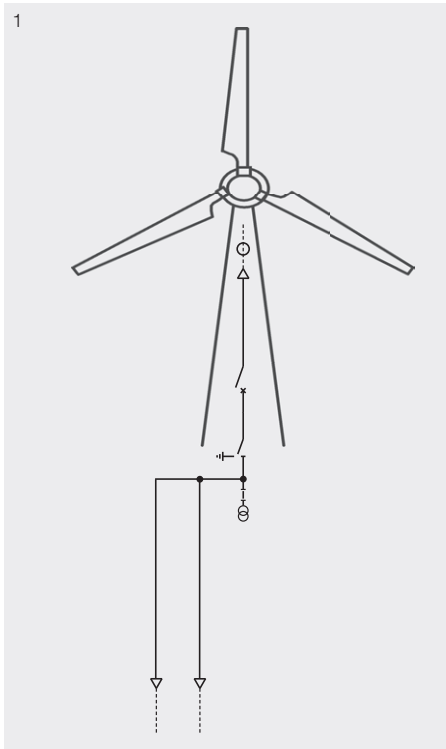
Inner cone sockets are available for the power ratings of today and tomorrow.

Advantages

- Very high cable termination point
- Inner cone plug connector system
- Connection of submarine cables with cross-sections up to 1600 mm²
- Hermetically sealed with IP65 protection for the high voltage section
- Complete remote control capability
- Rated currents 1250 A to 2500 A
- Prepared for all protection systems
- Suitable for connection of wind turbines with output even greater than 5 MW
- Suitable for operation on open or closed ring networks
- Vacuum circuit-breakers for reliable and maintenance-free connection of the wind turbine to the open or closed ring
- Optional circuit-breakers at both ends of the cable links between the wind turbines facilitate selective isolation in the case of a cable fault and thus maximum availability of generated power.

- 1 Pressure relief disk
- 2 Plasma diverter
- 3 Vacuum circuit-breaker
- 4 Test socket
- 5 Measuring sockets for capacitive voltage indicator system
- 6 Cable socket
- 7 Cable plug
- 8 Ring-type current transformer
- 9 Pressure relief duct
- 10 Busbars
- 11 Three-position disconnecter
- 12 Three-position disconnecter operating mechanism
- 13 Circuit-breaker operating mechanism
- 14 Multifunctional protection and control unit
- 15 Density sensor





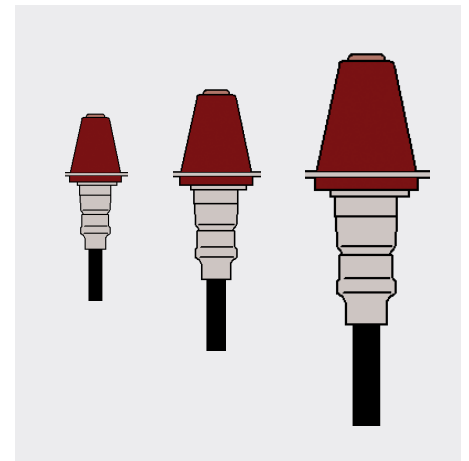
ZX1.2 with its standard panels and special variants provides a graded concept for optimum design of wind turbine network connections by submarine cable and full compliance with the individual safety needs of the operators.

The range extends from cost-effective direct connection (1) to the closed or open ring, through a compromise solution (2) to the enhanced safety connection using circuit-breakers (3).



Inner cone cable plug system

- Size 2 for cross-sections up to 300 mm²
- Size 3 for cross-sections up to 630 mm²
- Size 4 for cross-sections up to 1600 mm²



Technical data ZX1.2

| | | |
|------------------------------|----|------------------|
| Rated voltage | kV | ...36 |
| Test voltages | kV | ...70/170 |
| Rated frequency | Hz | 50/60 |
| Rated busbar current | A | ...1250; ...2500 |
| Rated current of feeder | A | ...1250; ...2500 |
| Rated peak withstand current | kA | ...80 |
| Rated short-time current 3 s | kA | ...31.5 |

Contact

For more information please contact:

ABB AG

Calor Emag Medium Voltage Products

Oberhausener Strasse 33

40472 Ratingen

GERMANY

Phone: +49(0)21 02/12-0

Fax: +49(0)21 02/12-17 77

E-mail: powertech@de.abb.com

Internet: <http://www.abb.com/mediumvoltage>

ABB AG

Calor Emag Medium Voltage Products

Petzower Strasse 8

14542 Werder (Havel) OT Glindow

GERMANY

Phone: +49(0)21 02/12-0

Fax: +49(0)21 02/12-17 77

E-mail: powertech@de.abb.com

Internet: <http://www.abb.com/mediumvoltage>

Note:

We reserve the right to make technical changes or modify the contents of this document without prior notice. With regard to purchase orders, the agreed particulars shall prevail. ABB AG does not accept any responsibility whatsoever for potential errors or possible lack of information in this document.

We reserve all rights in this document and in the subject matter and illustrations contained therein. Any reproduction, disclosure to third parties or utilization of its contents - in whole or in parts - is forbidden without prior written consent of ABB AG.

Copyright© 2009 ABB

All rights reserved