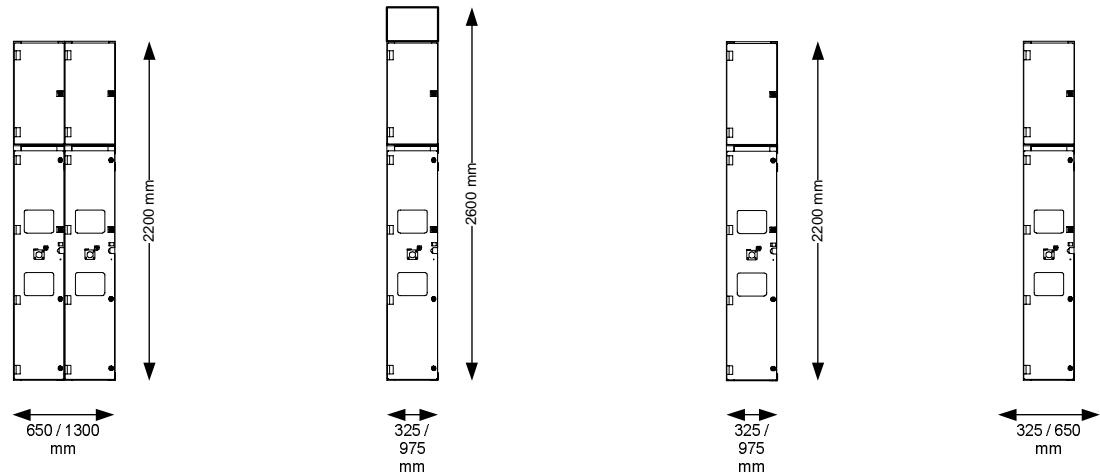


Front View

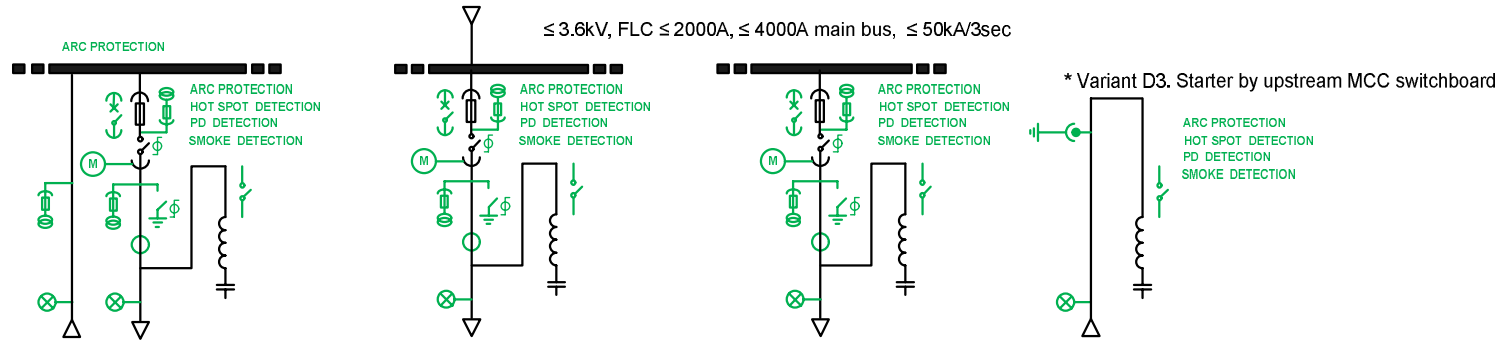


**Legend**

- Standard design
- Optional feature

Max. panel depth  
 Bottom Power cable entry = 1554 mm  
 Top Power cable entry = 1790 mm

Single Line Diagram



Equipment Schedule

Variant	A3	
Panel no.	1	2
Description	Incomer	Starter & Cap Bank
Interrupter	-	Vacuum
Design standard	IEC / AS	
Arc fault containment	AFLR / AFL	
Loss of service continuity	LSC2A	
Partition class	PM	
Degree of protection	IP4X	
Power cable entry / exit	Bottom or Top	
Min. installation requirement	Rear access	

Variant	B3
Panel no.	1
Description	Starter & Cap Bank
Interrupter	Vacuum
Design standard	IEC / AS
Arc fault containment	AFL
Loss of service continuity	LSC2A
Partition class	PM
Degree of protection	IP4X
Power cable entry / exit	Top / Bottom or Top
Min. installation requirement	Rear access

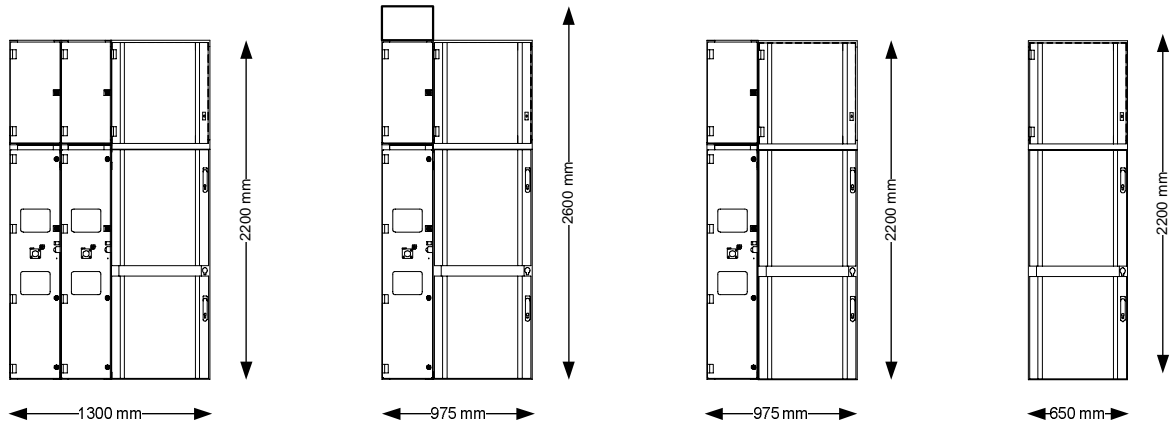
Variant	C3
Panel no.	1
Description	Starter & Cap Bank
Interrupter	Vacuum
Design standard	IEC / AS
Arc fault containment	AFL
Loss of service continuity	LSC2A
Partition class	PM
Degree of protection	IP4X
Power cable entry / exit	- / Bottom or Top
Min. installation requirement	Rear access

Variant	D3
Panel no.	1
Description	Cap Bank
Interrupter	-
Design standard	IEC / AS
Arc fault containment	AFLR / AFL
Loss of service continuity	LSC2A
Partition class	PM
Degree of protection	IP4X
Power cable entry / exit	Bottom or Top
Min. installation requirement	Rear access for Top power cable entry

**Disclaimer:** The shown product pictures are mainly for illustration of the proposed functionalities. The supplied goods might look different from the illustrations shown

Date	18 Feb 11	Scale	NTS	ZVC Capacitor Starter							
Dwg #	1VGA674118	Rev.	B	Sh.	1	Dwn	JO	Chk	SC		

Front View

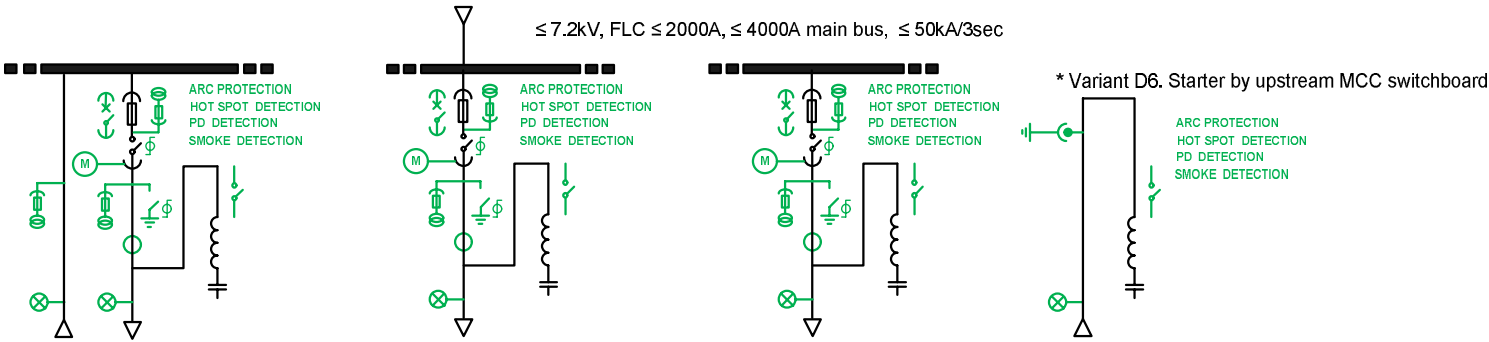


**Legend**

- Standard design
- Optional feature

Max. panel depth  
 Bottom Power cable entry = 1554 mm  
 Top Power cable entry = 1790 mm

Single Line Diagram



Equipment Schedule

Variant	A6		
Panel no.	1	2	3
Description	Incomer	Starter	Cap Bank
Interrupter	-	Vacuum	-
Design standard	IEC / AS		
Arc fault containment	AFLR / AFL		
Loss of service continuity	LSC2A		
Partition class	PM		
Degree of protection	IP4X		
Power cable entry / exit	Bottom or Top		
Min. installation requirement	Rear access for Top power cable entry		

B6	
1	2
Incomer & Starter	Cap Bank
Vacuum	-
IEC / AS	
AFL	
LSC2A	
PM	
IP4X	
Top / Bottom or Top	
Rear access	

C6	
1	2
Starter	Cap Bank
Vacuum	-
IEC / AS	
AFLR / AFL	
LSC2A	
PM	
IP4X	
- / Bottom or Top	
Rear access for Top power cable entry	

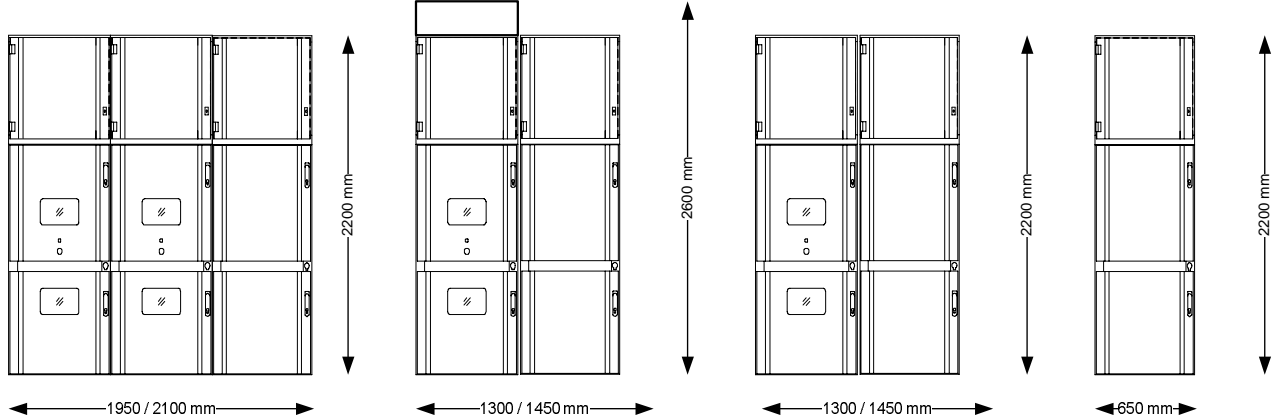
D6
1
Cap Bank
-
IEC / AS
AFLR / AFL
LSC2A
PM
IP4X
Bottom or Top
Rear access for Top power cable entry

**Disclaimer:** The shown product pictures are mainly for illustration of the proposed functionalities. The supplied goods might look different from the illustrations shown

Date	18 Feb 11	Scale	NTS	ZVC Capacitor Starter							
Dwg #	1VGA674118	Rev.	B	Sh.	2	Dwn	JO	Chk	SC		

This document is the property of ABB Australia. Reproduction without written consent from ABB is an offence.

Front View

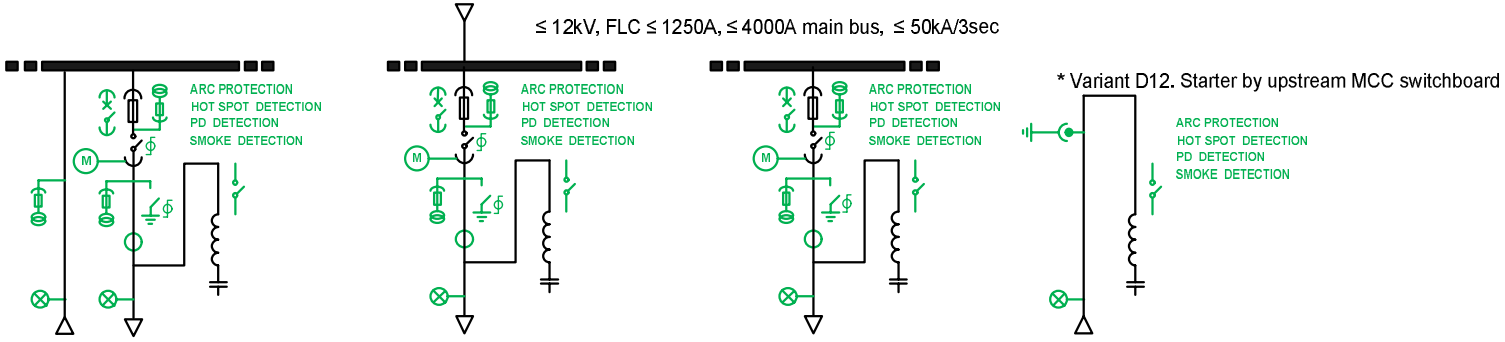


**Legend**

- Standard design
- Optional feature

Max. panel depth  
 Bottom Power cable entry = 1554 mm  
 Top Power cable entry = 1790 mm

Single Line Diagram



Equipment Schedule

Variant	A12		
Panel no.	1	2	3
Description	Incomer	Starter	Cap Bank
Interrupter	-	Vacuum	-
Design standard	IEC / AS		
Arc fault containment	AFLR / AFL		
Loss of service continuity	LSC2A		
Partition class	PM		
Degree of protection	IP4X		
Power cable entry / exit	Bottom or Top		
Min. installation requirement	Rear access for Top power cable entry		

B12	
1	2
Incomer & Starter	Cap Bank
Vacuum	-
IEC / AS	
AFL	
LSC2A	
PM	
IP4X	
Top / Bottom or Top	
Rear access	

C12	
1	2
Starter	Cap Bank
Vacuum	-
IEC / AS	
AFLR / AFL	
LSC2A	
PM	
IP4X	
- / Bottom or Top	
Rear access for Top power cable entry	

D12
1
Cap Bank
-
IEC / AS
AFLR / AFL
LSC2A
PM
IP4X
Bottom or Top
Rear access for Top power cable entry

**Disclaimer:** The shown product pictures are mainly for illustration of the proposed functionalities. The supplied goods might look different from the illustrations shown

Date	18 Feb 11	Scale	NTS	ZVC Capacitor Starter							
Dwg #	1VGA674118	Rev.	B	Sh.	3	Dwn	JO	Chk	SC	<b>ABB</b>	

This document is the property of ABB Australia. Reproduction without written consent from ABB is an offence.