

	Updated by: <b>Anders Jahnberg</b>		Approved by: <b>Göran Holmqvist</b>	Version <b>2.0</b>
To ABB SolutionsBank	Dept. <b>STS</b>	Updated <b>2008-12-02</b>	Filename TSG_RS 39 How to backup a Virtual Controller in RobotStudio 4.0 or QuickTeach 5.5.doc	Page <b>1/4</b>
Software Support, Industrial Software Products		Type of doc: <b>Trouble Shooting Guideline (TSG)</b>		

## TSG\_RS 39 : How to backup a Virtual Controller in RobotStudio or QuickTeach

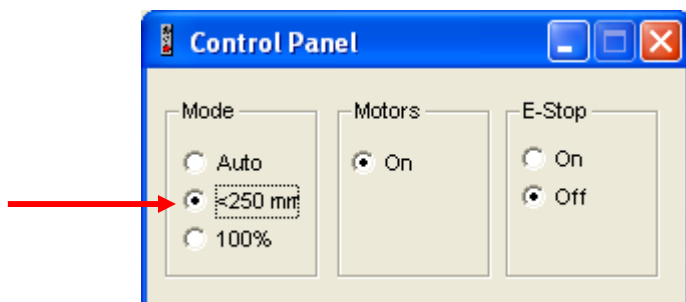
**Product:** RobotStudio – QuickTeach

**Version:** 4.0 – 5.5

**Problem:** I want to make a backup of my Virtual Controller

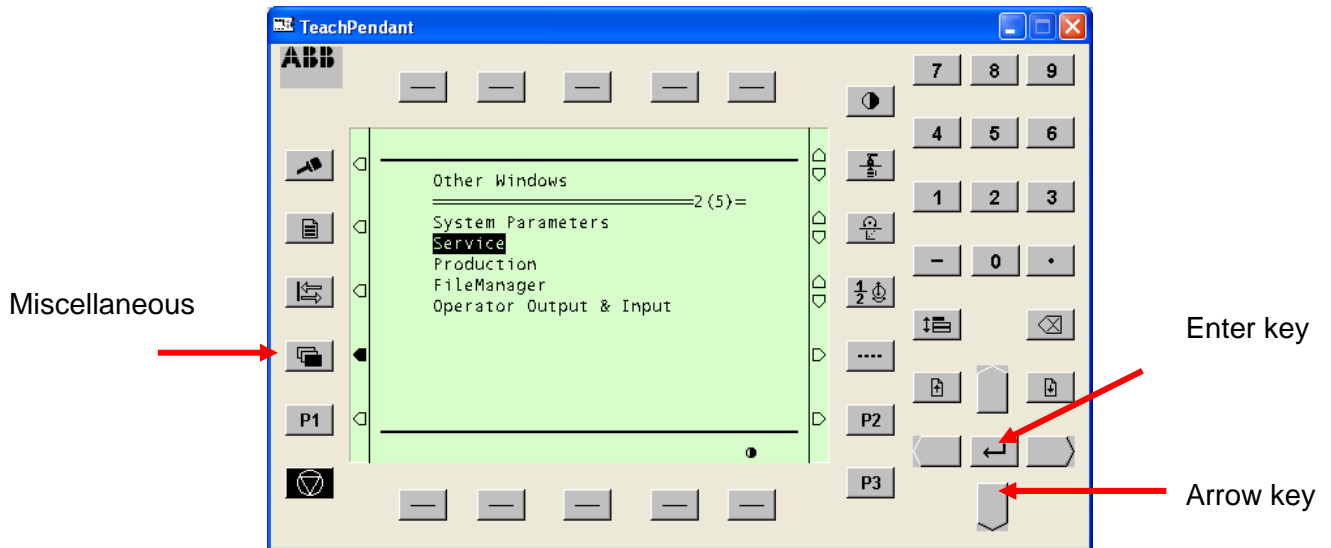
**Solution:** A backup of a VirtualController is made with the TeachPendant the same way as with a real RobotController.  
Please follow the example below :

1. Start RobotStudio or QuickTeach.  
Load the robot and Virtual Controller that you want to make a backup of, start the Virtual Controller (only in RobotStudio)
2. Start the TeachPendant (only in RobotStudio).  
In the **Object browser** select the robot **IRBxxxx\_xxxx**, on the **Mechanism** menu select **Teach Pendant...** (or click **F5**)
3. Go to manual mode.  
Click on the **250mm/s** button in the Control panel (see picture below)

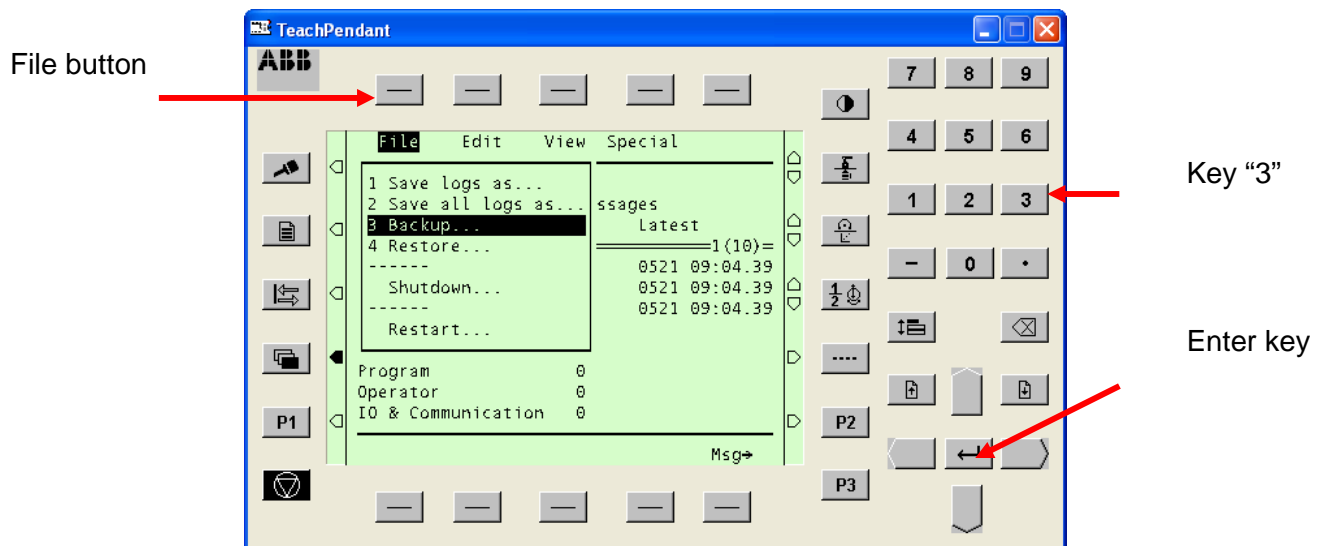


	Updated by: <b>Anders Jahnberg</b>		Approved by: <b>Göran Holmqvist</b>	Version <b>2.0</b>
To <b>ABB SolutionsBank</b>	Dept. <b>STS</b>	Updated <b>2008-12-02</b>	Filename TSG_RS 39 How to backup a Virtual Controller in RobotStudio 4.0 or QuickTeach 5.5.doc	Page <b>2/4</b>
Software Support, Industrial Software Products		Type of doc: <b>Trouble Shooting Guideline (TSG)</b>		

- Select Service.  
Click on the **Miscellaneous** button, select Service with the **Arrow key** then press the **Enter key** (see picture below)

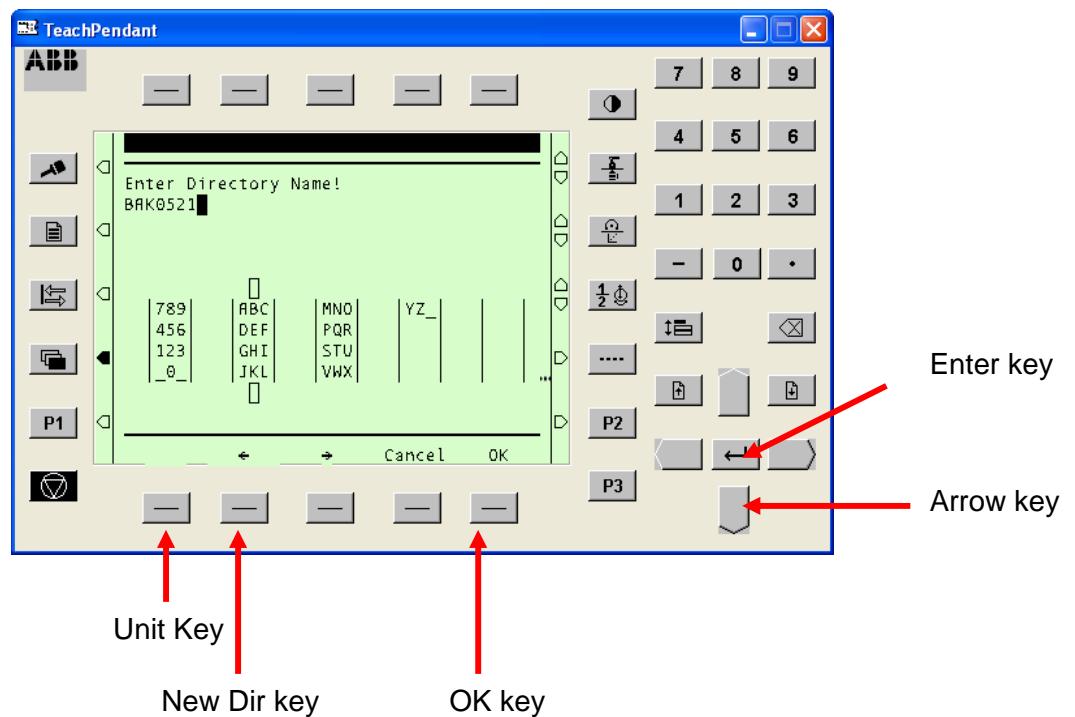


- Select File and Backup.  
Click on the **File** button then click on **3** to select **Backup** (see picture below)



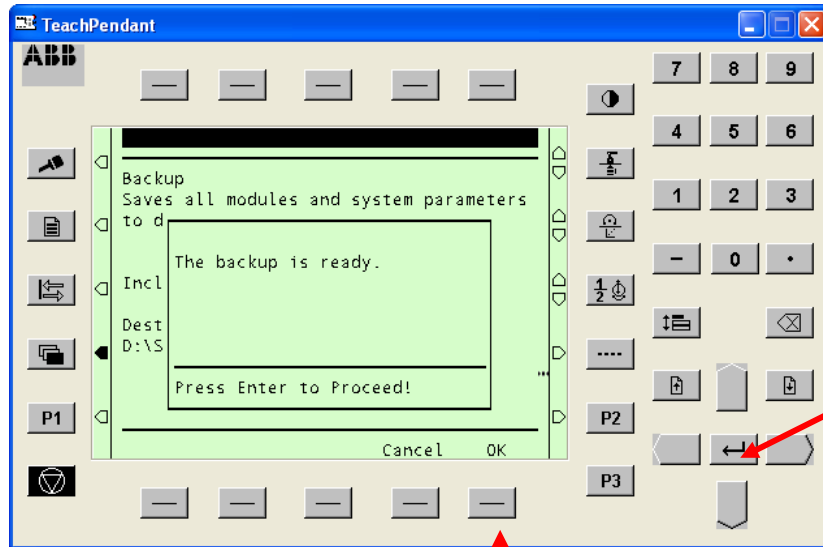
	Updated by: <b>Anders Jahnberg</b>		Approved by: <b>Göran Holmqvist</b>	Version <b>2.0</b>
To ABB SolutionsBank	Dept. <b>STS</b>	Updated <b>2008-12-02</b>	Filename TSG_RS 39 How to backup a Virtual Controller in RobotStudio 4.0 or QuickTeach 5.5.doc	Page <b>3/4</b>
Software Support, Industrial Software Products		Type of doc: <b>Trouble Shooting Guideline (TSG)</b>		

- Select unit and directory.  
Press the **Enter key**, press the **Unit Key** repeatedly until the desired **Massmemory unit** (hard disc) is displayed then use the **Enter key** and the **Arrow key** to browse to the desired destination directory, click on the **New Dir** key and input the desired name for your backup folder (the system will propose a name *Ex. BAK0521*)  
(see picture below)



	Updated by: <b>Anders Jahnberg</b>		Approved by: <b>Göran Holmqvist</b>	Version <b>2.0</b>
To ABB SolutionsBank	Dept. <b>STS</b>	Updated <b>2008-12-02</b>	Filename TSG_RS 39 How to backup a Virtual Controller in RobotStudio 4.0 or QuickTeach 5.5.doc	Page <b>4/4</b>
Software Support, Industrial Software Products		Type of doc: <b>Trouble Shooting Guideline (TSG)</b>		

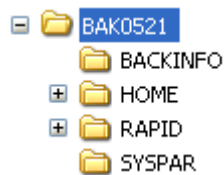
- Finish the backup.  
Press the **OK** key twice, press the **OK** key to start the backup, a message **"The backup is ready"** will appear on the TeachPendant when the backup is ready, press the **Enter** key



OK key

Enter key

- Below you can see the structure of the backup.



If you have any further questions, please contact your local ABB Support Center