

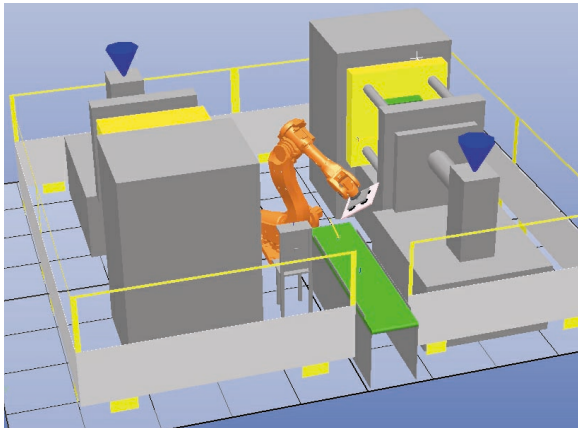


RobotStudio Machine Tending PowerPac

Software for the Plastics Industry

The fast way to visualize a robot cell

Now you can forget about terrible drawings to visualize a robot cell. RobotStudio Machine Tending PowerPac is a simulation software that demonstrates the ability of ABB robots in machine tending applications. The correct robot for the right machine is evaluated on its reachability. The customer gets an estimation of the cycle-time and cell footprint, as well as an understanding of what post-processes the robot may achieve while the machine is moulding the next part.



Thanks to the simulated robot cell, the understanding between the customer and the integrator of a common goal is improved. Even the inexperienced RobotStudio user can quickly set up a simulation. This makes RobotStudio Machine Tending PowerPac a true simulation tool for use by both the sales force and the engineers.

RobotStudio

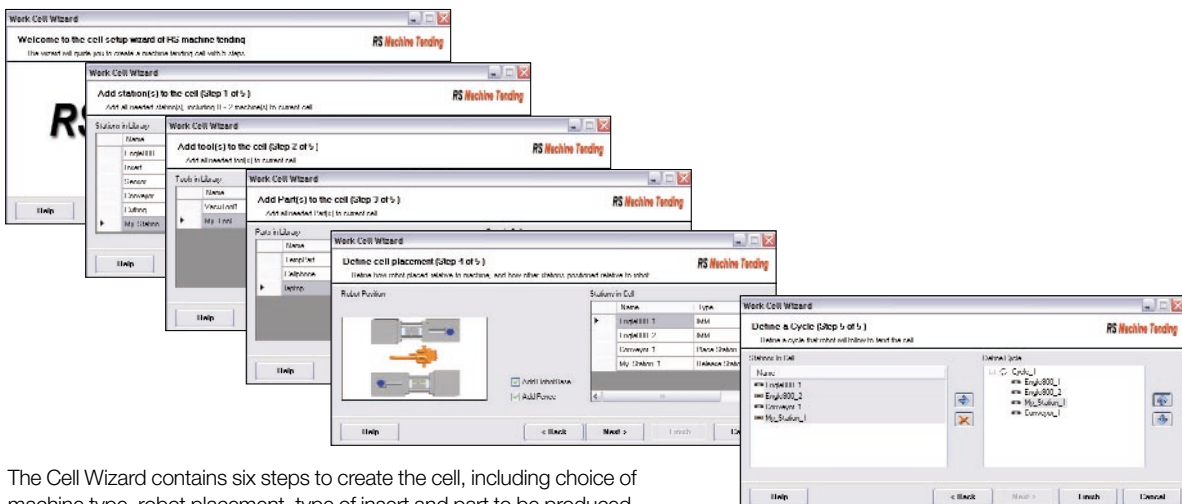
The Machine Tending PowerPac is fully integrated into RobotStudio, ABB's simulation and offline programming software. RobotStudio allows robot programming to be carried out in the office at your PC, without shutting down production. It also enables robot programs to be prepared in advance, increasing overall productivity.

You can save considerable time and money by using RobotStudio:

- Reduce risks by visualizing and confirming solutions and layouts.
- Program new parts without interrupting production.
- Optimize robot programs to increase productivity.
- Generate higher part quality through the creation of more accurate paths.

Six steps to creating a 3D cell

When creating a 3D robot cell to simulate, the user is guided by the Cell Wizard. The wizard contains six steps to create the cell, including choice and number of machine(s), robot placement (both shelf and floor mounted robots are available), type of insert and the part to be produced and which stations are to be used for post-processing (de-gating, flaming, conveyor). After completing the steps in the wizard, the 3D cell is automatically generated - just start the simulation.



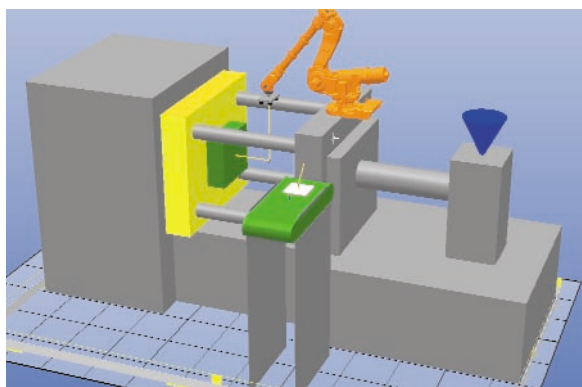
The Cell Wizard contains six steps to create the cell, including choice of machine type, robot placement, type of insert and part to be produced and which stations are to be used for post-processing.

RobotStudio Machine Tending PowerPac

Software for the Plastics Industry

Pre-defined 3D stations

A cell is made up of several stations, e.g. injection moulding machine, insert/in-mould pick up, degating, flaming, conveyor. RobotStudio Machine Tending PowerPac is based on station libraries with different kinds of stations and also moulded parts. As for the machine, many of the market leading brands are represented with their different models. Hence, it is not necessary to import cad models. Should any of the stations in the library need to be adapted, this can easily be achieved by modifying the station's geometrical parameters. Each station contains a pre-defined robot path. The user still has the possibility to import his own cad models, and can then also easily add the robot path to them.



Visualize your solution in one hour

A simulation is an easy way to reach a common understanding of the solution proposed. With RobotStudio Machine Tending PowerPac, even the inexperienced RobotStudio user can quickly set up a simulation thanks to the Cell Wizard. The experienced user also saves time with the 3D station library since he does not need to import his own cad models, nor define the robot paths. After you have the customer requirements for a robotized machine tending cell, less than an hour is needed to create the first simulation. The customer gets an estimation of the cycle time through the statistics function as well as the cell footprint. Furthermore, it is clear what post-processing the robot may achieve while the machine is moulding. During the simulation, the robot movement is synchronized with the animated moving clamp of the machine. Any bottleneck in production is instantly identified by graphical statistics.

RobotWare Plastics Mould

When it is time for the installation of the real robot, RW Plastics Mould is the software product for easy programming and operation of the ABB robot for machine tending and post-processing. It provides an easy-to-use user interface for programming and production, including safe home run, user authorization, production statistics and event logging, as well as a standardized and structured way of machine tending programming. The production gets more efficient during installation, production set-up and optimization of the robot cycle, no matter if you produce mobile telephones or car bumpers. RW Plastics Mould minimizes the learning curve, setup time, error recovery time and improves error diagnostic accuracy. Just as for RobotStudio Machine Tending PowerPac, the keyword is EASY.

Features RobotStudio Machine Tending PowerPac

- Graphical statistics - the "Analyzer"
- Reachability control - helps you choose the correct robot
- Post-processing – visualize the robots ability and flexibility for post-processing.
- Footprint – visualize the area needed for the cell.
- Simulation automatically generated.
- Wizard – six steps to create a 3D cell.
- Pre-defined paths – each station contains a pre-defined path for the robot.
- Machine library - market leading brands are represented with their different models.
- Customize stations – stations are easily modified.
- Animated machine movement
- Reduced time to create a robot simulation.
- Language: English and Chinese

Requirements

To use the RobotStudio Machine Tending PowerPac a RobotStudio license is needed.