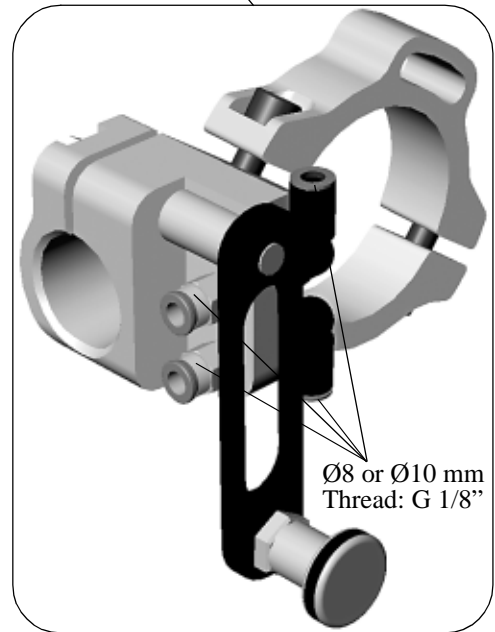
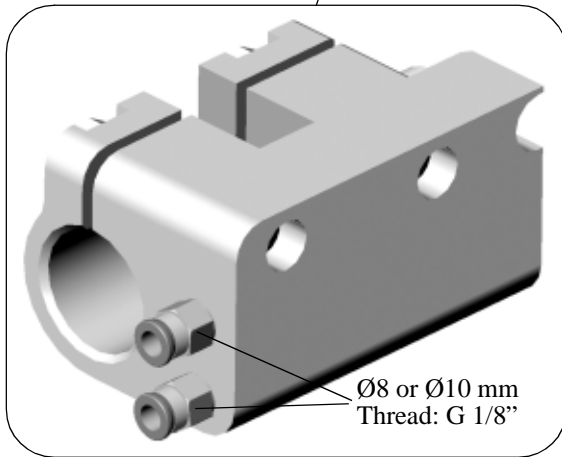
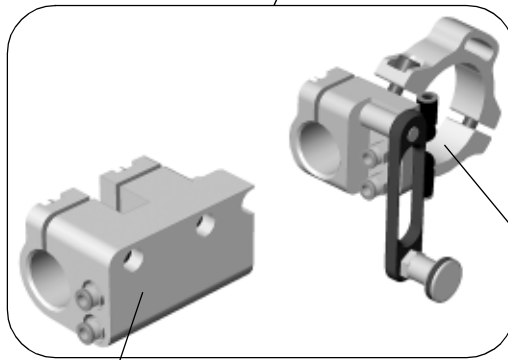
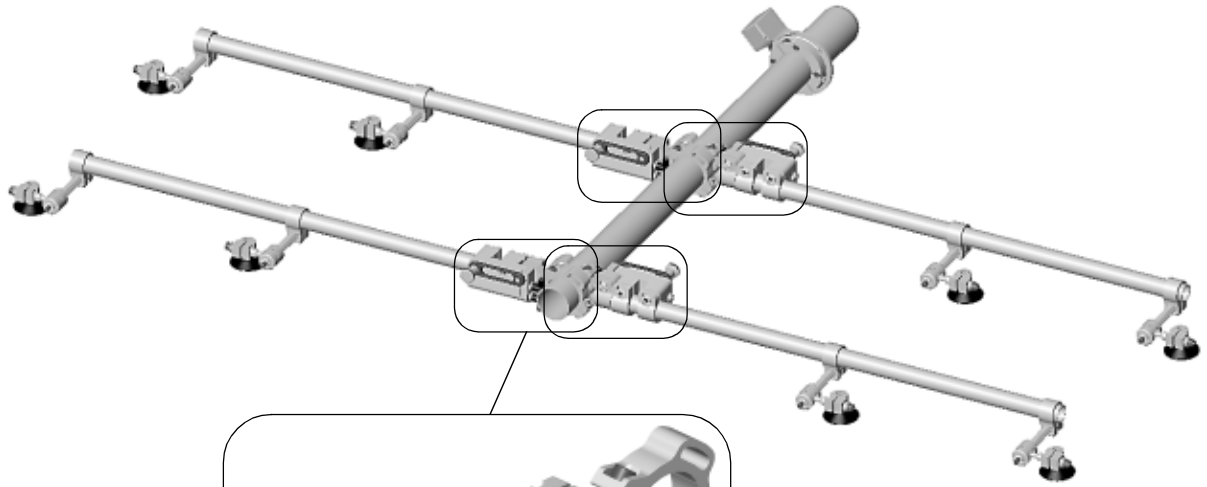


### 6.11 Wrist Clamp Male Ø38 & Female Ø76/38



Wrist Clamp male Ø38, Part No..... 91110820  
Weight ..... 1130 g  
Material..... Aluminum

Wrist Clamp female Ø76/38, Part No...91110819  
Weight..... 554 g  
Material .....Aluminum

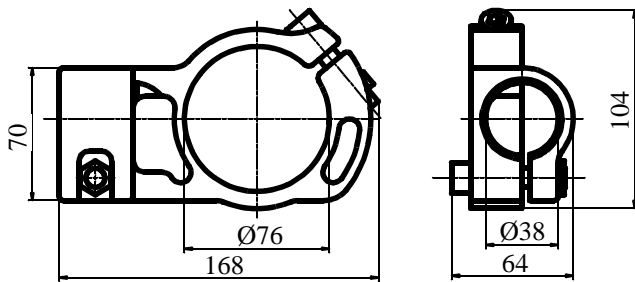
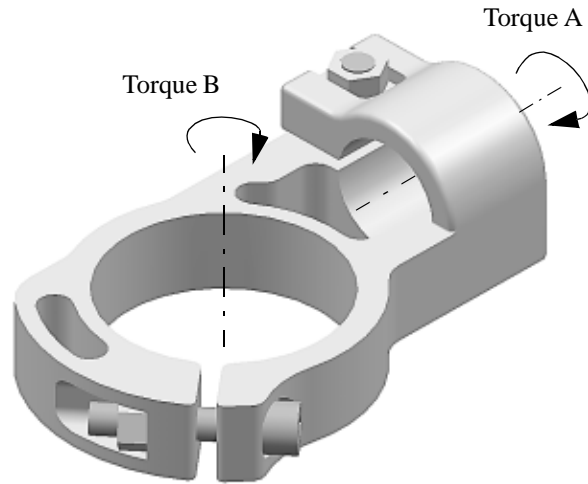
All air connctors, with a G 1/8" threading, are interchangeable.

## 6.12 Wrist Extension Ø76 mm

(Only sold as spare part)

Part No. .... 9934875

Weight.....542 g  
 Material .....Aluminum  
 Tightening Torque for M10 ..... 47 Nm  
 Maximum Torque A for Ø38 Tube..... 400 Nm  
 Maximum Torque B for Ø76 Tube..... 440 Nm

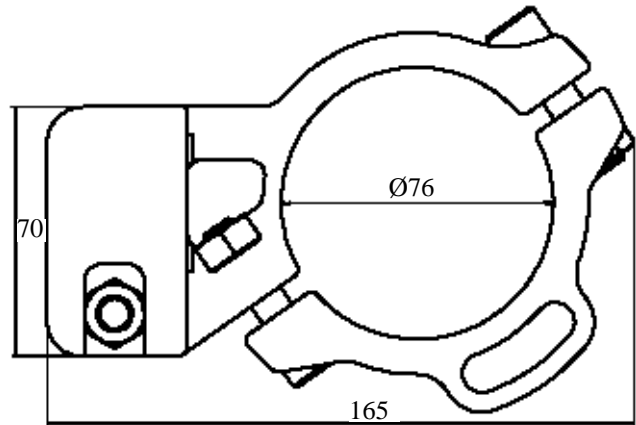
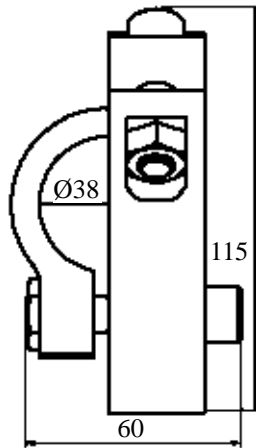
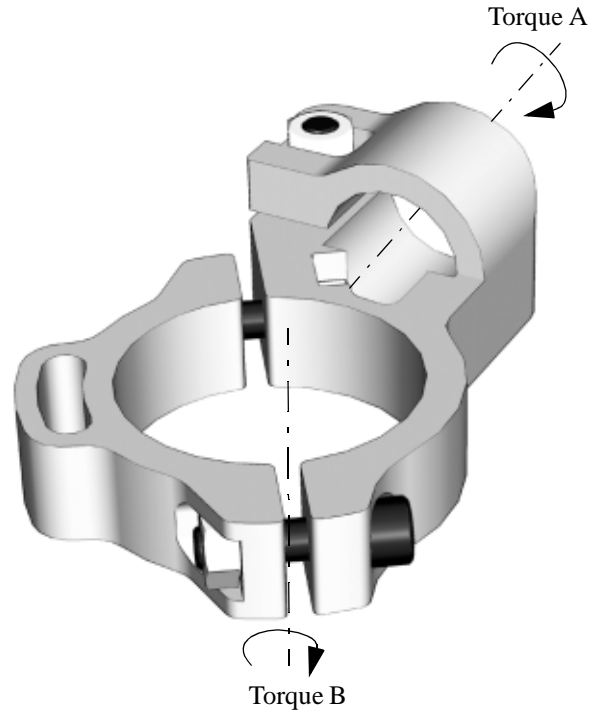


Filename: Kap6.fm, Mod date: 2005 04 07

## 6.13 Wrist Extension Ø76 mm split

Part No. .... 91110322

Weight..... 606 g  
 Material ..... Aluminum  
 Tightening Torque for M10 ..... 47 Nm  
 Maximum Torque A for Ø38 Tube..... 400 Nm  
 Maximum Torque B for Ø76 Tube..... 400 Nm



Filename: Kap6.fm, Mod date: 2005 04 07

## 6.21 Bayonet Attachment for Wrist Extension Ø76 mm

Part No ..... 91696092

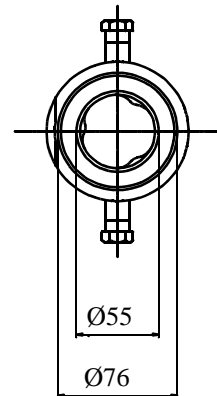
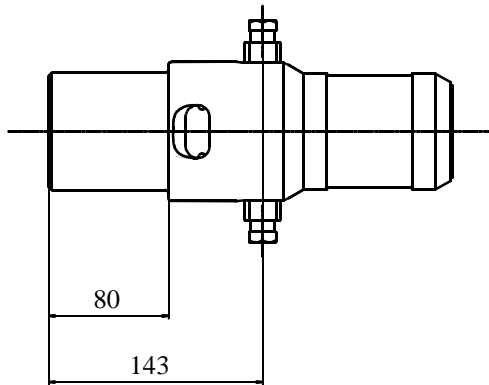
Including End Plate for Push-in Fittings, **3** holes.

Part No ..... 91110821



Including End Plate for Push-in Fittings, **6** holes.

Weight..... 2600 g

Material ..... Aluminum



### Option

End Plates and corresponding Push-in Fittings	End Plate for Push-in Fittings, <b>3</b> holes	End Plate for Push-in Fittings, <b>6</b> holes
End Plate part No. Included	9939374	9939375
Weight of End Plate	198 g	170 g
Push-in Fittings 8 mm tube. Part No. <b>Push-in Fittings NOT included.</b>	G3/8 - 8 91207662	G1/8 - 8 91204069
Push-in Fittings 10 mm tube. Part No. <b>Push-in Fittings NOT included.</b>	G3/8 - 10 91205003	-
		

## 6.22 Wrist Extension Ø80 mm

(Only sold as spare part)

Part No. .... 9938392

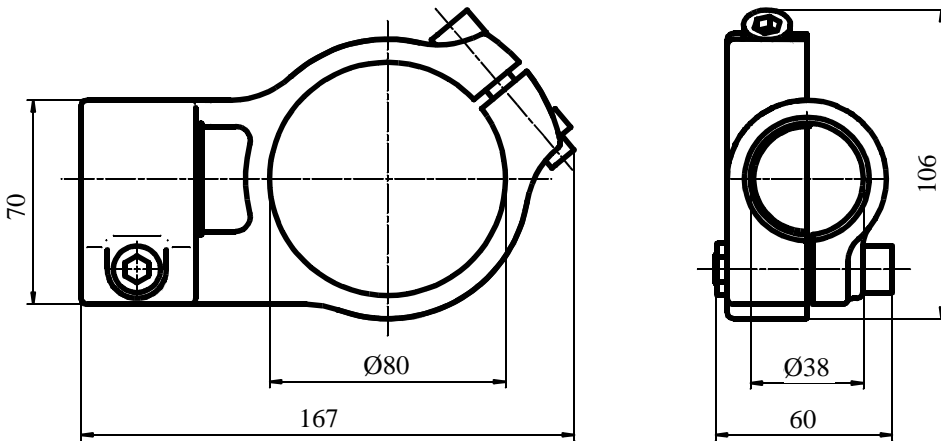
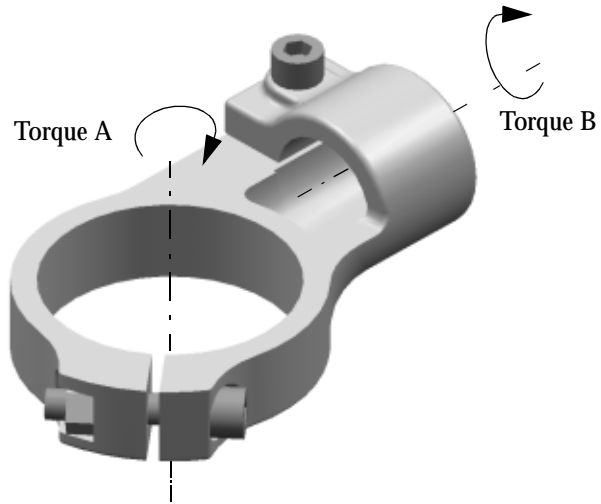
Weight..... 544 g

Material ..... Aluminum

Tightening Torque for M10 ..... 47 Nm

Maximum Torque A for Ø80 ..... 440 Nm

Maximum Torque B for Ø38 ..... 112 Nm



Filename: Kap6.fm, Mod date: 2005 04 07