



Real-Time Production Data

WebWare™

WebWare is a software product that allows you to be in control of your production data. Once your ABB robots are attached to your network, WebWare allows you to safe-guard and optimize your investment in robotics!

Safe-Guard Your Robot Data

Would you run a business without safe-guarding mission-critical data? Not intentionally you say, yet it is quite commonplace. Many companies have weak or nonexistent solutions for routine robot backup while having full backup of their office data, such as Word or Excel documents.

Disruptions from power failures, equipment repairs, and unauthorized program changes problems can wreak havoc on productivity.

WebWare offers the possibility to safe-guard your data by scheduling automatic backup and permanent archiving of robot programs, configuration files, and other production files from the robot. Think of WebWare as an insurance policy to minimize downtime.

Improve Your Uptime

When it comes to improving uptime, the first thing you need is actionable information. In today's information society, you have access to an enormous amount of data, but data is not what helps companies be more competitive in the market. The key to succeeding in today's business environment is having "actionable information".

WebWare empowers you to make informed decisions by supplying a wide variety of actionable information that answer:

- What is the uptime of my robots?
- What are the most common problem areas?
- What are my cycle times?
- How can I monitor quality metrics?
- How can I monitor preventative maintenance needs?

Modularity

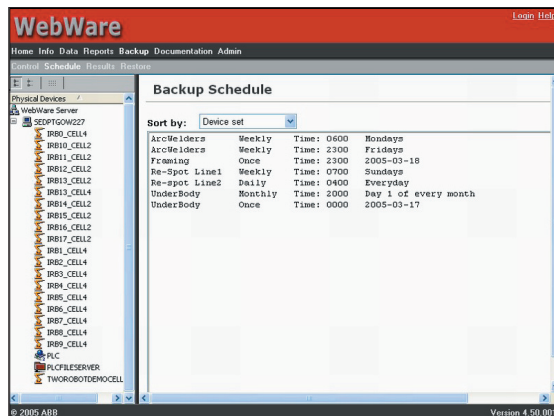
WebWare is built on a modular framework based on proven technologies. The modules allow you to get the functionality you need. And if needs change, just add the appropriate module. The following modules are currently available:

Backup Module. The Backup Module for WebWare includes all that you need to safe-guard your robot data.

Report Module. The Report Module for WebWare provides a ready-made solution for automating the collection and reporting of production statistics.

Automatic Backup

WebWare's Backup module offers the unique ability to perform unattended backups of the robot systems without the need to interrupt production. The flexible backup scheduler allows you to group robots and run backups for each group independently from each other. Backups can be performed daily, weekly or monthly in any combination. With ready access to backup archives, WebWare's Backup Module enables quick recovery of robot programs, configuration files, and other files to the robot.



The backup module.

Version Control

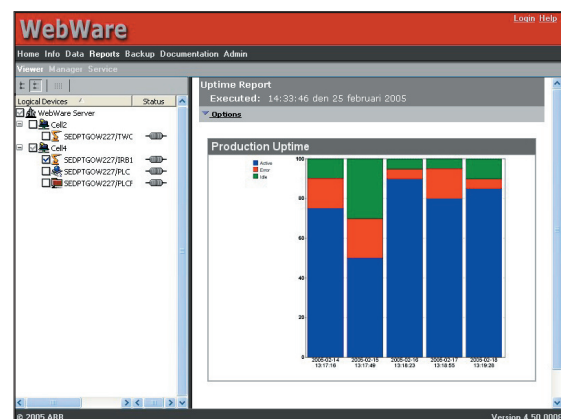
The Backup module includes built-in support for Microsoft® Visual SourceSafe for version control and tracking change history. There have been many occasions when programmers have been required to re-write certain sections or portions of a program that had been deleted or over-written. With Visual SourceSafe installed, you can select different versions of a robot program (or other file) and see what has been modified. All past versions are readily available to identify and use any portion of work that has been previously saved.

Production Monitoring

WebWare's Report module provides a ready-made solution for reporting of production statistics. Generic timers and counters give you the flexibility to measure an endless variety of useful production metrics. For example, counters can be used to quantify production output, track downtime incidents, and monitor the frequency of various errors. Timers can be used to keep a running history of cycle time variations, lost production time or utilization rates. Data such as this is invaluable for increasing the uptime of your robot system.

Customized Data Collection

More or less any information accessible in the robot controller can be made available in WebWare. WebWare's Report Module includes the concept of Custom Databases. Custom Databases allows you to design your own databases in order to fully support all your needs for automatic data acquisition. For example, collection of arc-welding process data allows you to create "birth certificates" for the purpose of part traceability.



The report module.

Remote Service Information

For troubleshooting and maintenance the Report module offers remote access to service information. You can browse the current state of the robot controller, check versions of robot software that are installed and running, monitor I/O, and review the event log history. In addition, for robots that support the ABB Service Information System, you can access current information regarding the need for scheduled maintenance and see a list of all robots that currently require maintenance.