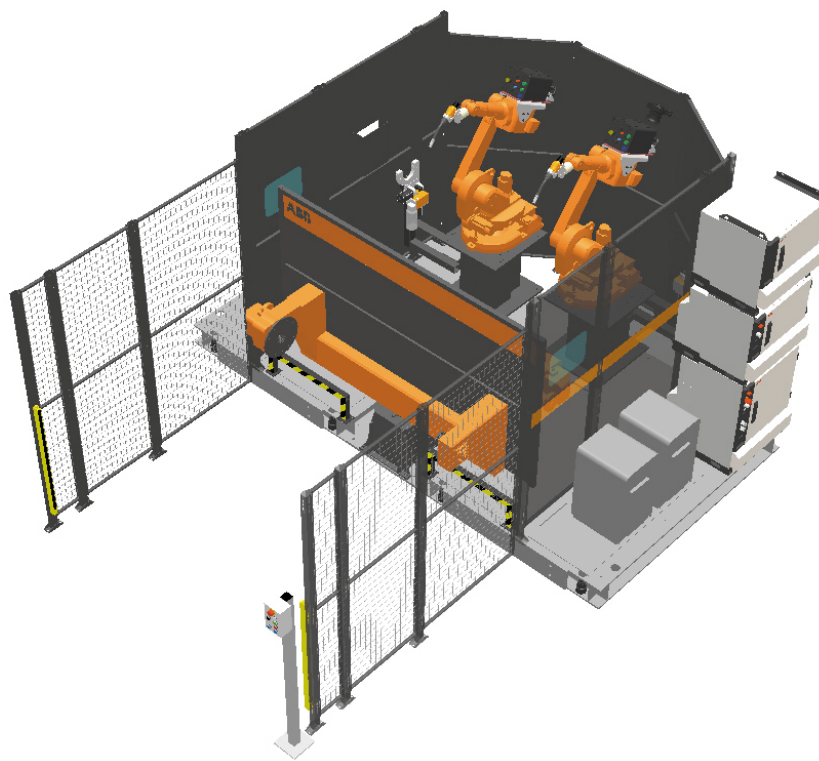


# FlexArc® 250R MultiMove™ Cell

Global Arc Welding Production Solution



## A complete range of fully integrated, standardized welding cells

*FlexArc robotic welding cells are complete robot systems available in several flexible and versatile, standard modular packages. The cells are delivered ready to weld.*

### **Flexibility**

If new parts are modified, added or specifications change, fixtures can be changed or modified on one station or both. The robot can either weld new or different parts and maintain maximum flexibility of the cell.

Each of ABB's FlexArc Cells are available in virtual format as identical replicas of the actual in Robot-

Studio and can be programmed offline on a personal computer.

Based on our marginal production solutions ABB has standard versions to meet your needs.

### **Reusability**

FlexArc cells have produced millions of parts since their introduction and are industry accepted and proven solutions.

### **High Productivity**

FlexArc cells are standard, pre-engineered solutions designed to permit quick, efficient set-up so you are running production in minutes instead of days.

# FlexArc<sup>®</sup> 250R MultiMove<sup>™</sup> Cell

## Global Arc Welding Production Solution

### TECHNICAL DATA

#### THE 250RCELL FEATURES

One or two IRB 1600 or 2400 robots equipped with IRC 5 controller  
 180° index positioner 250R  
 Perimeter guarding which complies with ANSI/RIA 15.06/1999  
 Man/Machine Interface  
 Welding power supply  
 Robotic welding torch (air cooled or water cooled)  
 Robotic torch cleaner dresser  
 Metal mounting base (transportable)  
 Operator present sensing device  
 Cables are completely integrated into the cell  
 Cell door interlock device

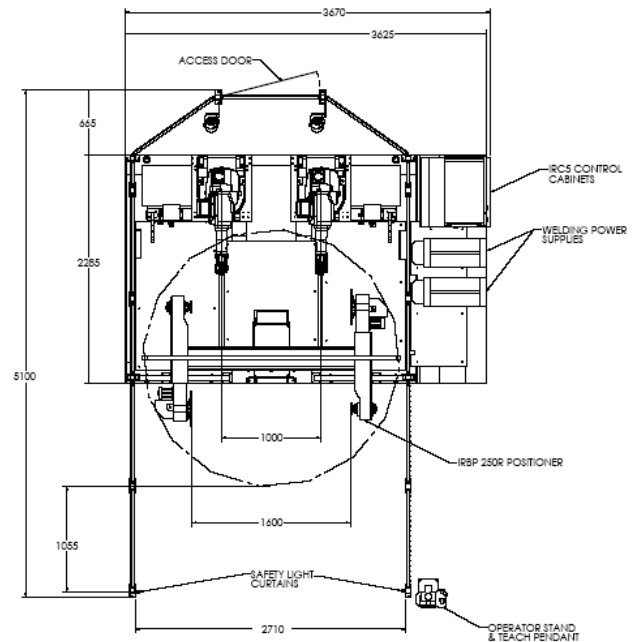
#### SPECIFICATION

Handling capacity Per Side (Station)	250 Kg/ 551 Lb
Max Fixture Diameter Per side (Station)	1M/ 39.36 Inches
Max Fixture length Per side (Station)	1.6M/ 62.99 Inches
Max Inertia	40 Kg <sup>m</sup> <sup>2</sup>
Max Bending torque	650 Nm
Max Speed	30 Rpm
Min interchange time	3.3 seconds
Max interchange time	4 seconds
Max load diff	150 kg
Optional Equipment	Torch Service Center Incl. BullsEye <sup>™</sup> , SmarTac <sup>™</sup> , Fume Hood (incl. lighting), Thru-Arc Seam Tracking, Offline Programming Software, Virtual FlexArc <sup>™</sup>

#### 250R INDEXES 180 DEGREES WITH HEAD TAIL STOCK ROTATION



#### LAYOUT DIMENSIONS



#### PRODUCTION CYCLE DESCRIPTION

Operator unloads and loads on one fixture while the robot welds on the second fixture. When both the operator and robots are complete, the system indexes and cycle starts again. It can produce either 2 identical parts or 2 different parts of type A and type B.

Unload & load  
 Operator's  
 Arc welding cycle  
 Index

