

| Description | Model | Page |
|---|-----------------|-------------|
| Wound, Oil-Filled VT (High Accuracy available) | POF-550 | 3-4 |
| Wound, Oil-Filled CCVT (High Accuracy available) | DDB-123 | 5-6 |
| Wound, Oil-filled CT (High Accuracy available) | COF(CXM)-550 | 7-8 |
| Wound, Oil-Filled, Station Service Voltage Transformer | SSVT-550 | 9-10 |
| Wound, Oil-Filled, Single Phase Metering Unit (High Accuracy available) | KA-123(KXM-550) | 11-12 |

application

The POF-550 outdoor voltage transformer is rated for use on 115,000 volt systems with 550kV BIL. Primary voltage ratios are available from 480:1 to 1000:1 for use on 115,000 volt systems, at 60 Hertz (Hz). This oil-filled instrument voltage transformer will operate with high accuracy for metering or relay applications.

mechanical description

The tank and expansion chambers are steel plate, pressure and vacuum tight and hermetically sealed at the factory to prevent breathing and oil contamination. Expansion chambers allow for the expansion/contraction of oil for temperature and load fluctuations. Tank components are washed and coated with anticorrosive iron phosphate and then finished with ANSI 70 Gray baked-on electrostatic polyester powder. The primary bushing is ANSI 70 Gray, high strength porcelain with a high degree of stability for transportation and seismic withstand. The primary terminal is stainless steel NEMA 4-hole pad. The secondary terminals are 1/4"-20 copper studs with associated hardware located inside a removable terminal box with three (3) 1 1/2" NPT conduit hubs. The ground terminal is a stainless steel NEMA 2-hole pad. The unit is fitted with a 5kV H₀ Bushing, pressure relief valve, oil level indicator, 3/4" oil fill plug, and 1/2" drain valve.

accuracy performance

The POF-550 will operate with 0.3 Class accuracy for metering applications with burdens of 0, W, X, M, Y, Z and ZZ. Upon request, 0.15 Class metering accuracy is available with burdens of 0, W, X, M, Y and Z, as well as 0.3 ZZ. The transformer is accurate from 90% to 110% of rated primary voltage.

mounting

The POF is designed for mounting on substations structures in a vertical only position with four mounting holes in the base.



testing

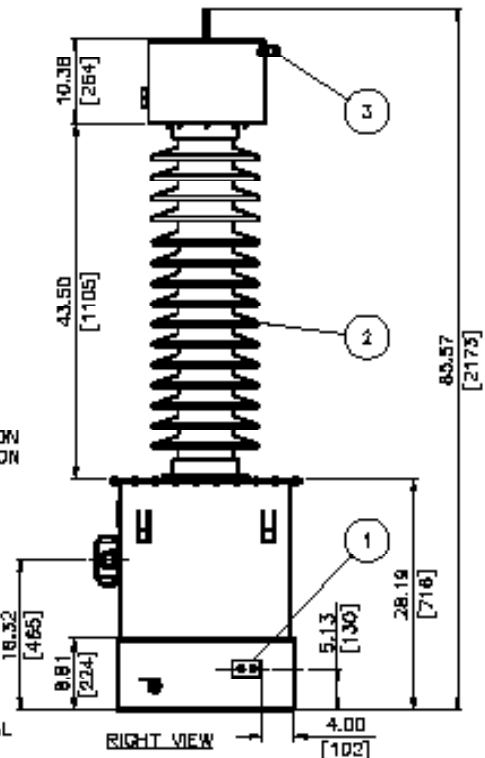
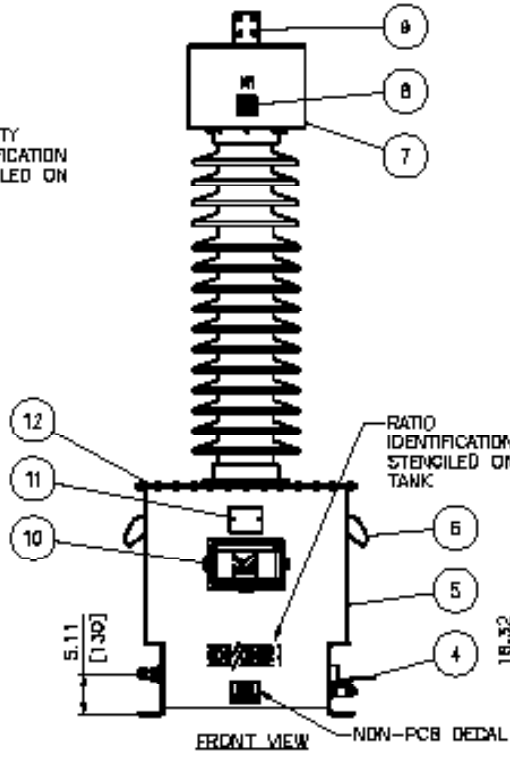
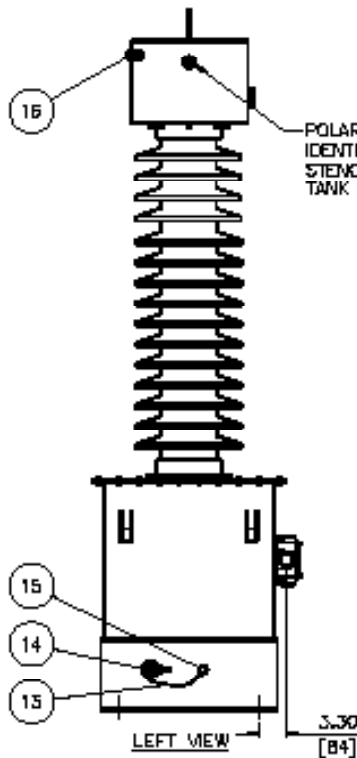
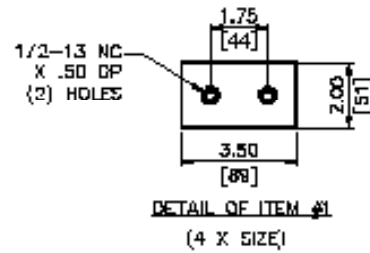
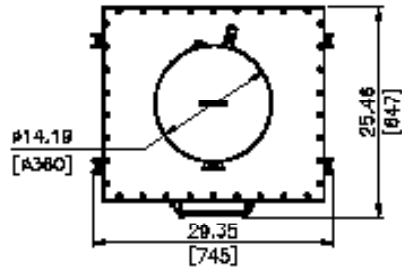
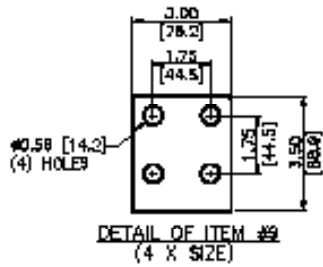
The unit is individually tested per the IEEE C57.13 standard, including applied and induced voltage, accuracy and polarity. Additional tests include dissipation and partial discharge tests. Partial discharge testing is performed to guarantee the unit is free of partial discharge through 135% of the nominal system voltage.

options

The POF is available with an Extra Creep Bushing, Polymer Bushing, Stainless Steel Tank, and/or -50°C oil. Contact factory for other needs.

| ORDERING INFO FOR POF-550 | | | | | HIGH ACCURACY POF-550 | |
|---------------------------|---------|-----------------|----------------|---------------------|--|---------------------|
| Ratio | Primary | Secondary | Catalog Number | Accuracy/ Burden | Catalog Number | Accuracy/ Burden |
| 480/800:1:1 | 55200 | 115/69 & 115/69 | K710800TB | 0.3 0,W,X,M,Y,Z,ZZ | Add "AAEW" to the end of the standard catalog number | 0.15 0 to Z, 0.3 ZZ |
| 600/1000:1:1 | 69000 | 115/69 & 115/69 | K711000TB | 0.3 0,W,X,M,Y,Z,ZZ | | |
| 600/1000:1:1:1 | 69000 | (3) 115/69 | TBD | 0.3 0,W,X,M,Y,Z,ZZ | | |

- Thermal Burden Rating (Typical): 7500VA.
- Overvoltage Rating: 1.1x cont.



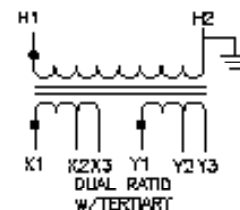
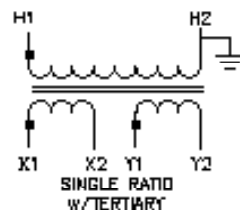
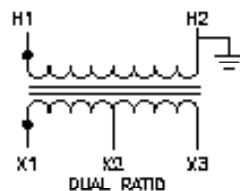
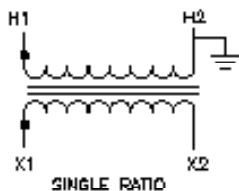
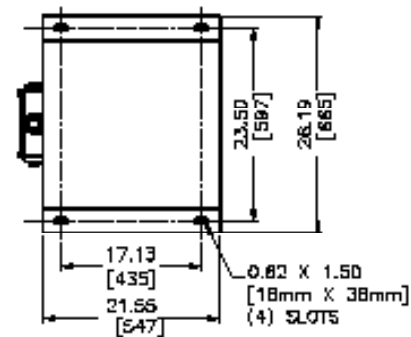
| | | |
|------|--|-----|
| 15 | 3/4" OIL FILL PLUG | 1 |
| 16 | GROUND LUG | 1 |
| 14 | HD BUSHING 5KV | 1 |
| 13 | GROUND STRAP, REMOVABLE | 1 |
| 12 | TANK COVER, NUMBEL TO BRAY | 1 |
| 11 | BAR-CODED NAMEPLATE | 1 |
| 10 | SECONDARY TERMINAL BOX, ISI 1-1/2" HUBS | 1 |
| 9 | PRIMARY TERMINAL 4 HOLE NEMA STD. (304L 5/8) | 1 |
| 8 | OIL LEVEL GAUGE, WARNINGS | 1 |
| 7 | 14.0" DIA EXPANSION CHAMBER, NUMBEL TO BRAY | 1 |
| 6 | LIFT LINES | 4 |
| 5 | TANK, NUMBEL TO BRAY | 1 |
| 4 | 1/2" DRAIN VALVE | 1 |
| 3 | PRESSURE RELIEF VALVE | 1 |
| 2 | HV PORCELAIN BUSHING, LIGHT GRAY GLAZE | 1 |
| 1 | NEON GROUND PAD, 2-HOLE 1/2-13 5/8 | 1 |
| ITEM | DESCRIPTION | QTY |

NOTES:

- SECONDARY TERMINALS ARE 1/4-20 COPPER STUDS WITH LOCK WASHERS & HEX NUTS.
- FILLED WITH NON-PCB MINERAL OIL WHEN MANUFACTURED.
- GROUND PAD HARDWARE IS SUPPLIED ONLY WHEN GROUND CONNECTORS ARE REQUESTED AND SUPPLIED WITH THE UNIT.
- ALL DIMENSIONS ARE INCHES (mm).

SPECIFICATIONS:

- APPROX. OIL ----- 60 GAL (227 l)
- APPROX. NET WEIGHT --- 1073 LBS (486kg)
- BUSHING L.D. ----- 110.04" (2795 mm) MN
- BUSHING S.D. ----- 40.50" (1028 mm) MN



NOTE: OUTLINES ARE FOR REFERENCE ONLY. CONTACT FACTORY FOR ACTUAL DESIGN DRAWINGS.



application

The DDB-123 outdoor coupling capacitive voltage transformer is rated for use on 115,000 volt systems with 550kV BIL. Primary line to ground connected voltage ratios are available from 525:1 to 1000:1 for use on 115,000 volt systems, at 60 Hertz (Hz). This oil-filled coupling capacitive voltage transformer will operate with high accuracy for metering, monitoring, carrier communication, or relay applications.

mechanical description

The transformer contains mechanically stabilized capacitor layers, a multi-tap inductive voltage transformer, and a reactor for calibration of the voltage output built into a fully insulated, oil-filled base assembly. The tank is steel plate, pressure and vacuum tight and hermetically sealed at the factory to prevent breathing and oil contamination. The dome is aluminum and contains stainless steel expansion bellows to allow for the expansion/contraction of oil for temperature and load fluctuations. The bellows maintain constant pressure on the oil under various ambient and load conditions to allow for horizontal shipment. Tank components are shot-blasted, washed and coated with a heavy galvanized finish, effectively making the unit paint-free. The primary bushing is ANSI 70 Gray, high strength porcelain with a high degree of stability for transportation and seismic withstand. The primary terminal is a tin-plated copper alloy stud supplied with a NEMA 4-hole pad connector. The secondary terminals are M8 hex head bolts with associated hardware located inside a removable cover, terminal box with a 1 1/2" conduit opening in the bottom plate. The ground terminal is an integral NEMA 2-hole configuration on the base. The unit is fitted with a reconnectable ground terminal, for direct tank ground connection or for use with carrier accessories for high frequency injection, a voltage tap ground switch, oil level indicator, and oil sampling valve.

accuracy performance

The DDB-123 will operate with 0.3 Class accuracy for metering applications with burdens of 0, W, X, M, Y, Z and up to ZZ and 0.6 Class accuracy for relaying applications with burdens of 0, W, X, M, Y, Z and up to ZZ. Upon request, 0.15 Class metering accuracy is available and burden capability up to Z on each secondary winding. The transformer is accurate from 90% to 110% of rated primary voltage.



mounting

The DDB is designed for mounting on substations structures in an upright position with four mounting holes in the base.

testing

The unit is individually tested per the ANSI C93.1 standard, including applied and induced voltage, accuracy and polarity. Additional tests include dissipation and partial discharge tests. Partial discharge testing is performed to guarantee the unit is free of partial discharge through 135% of the nominal system voltage.

options

The DDB is available with an additional secondary winding (3 total), Extra Creep Bushing, Polymer Bushing, Stainless Steel Tank, Carrier Accessories (Drain Coil, Carrier Ground Switch, Spark Gap), and/or -50°C oil. Line traps also available. Contact factory for other needs.

ORDERING INFO FOR DDB-123

| Capacitance (pF) | Ratio - 600/1000:1:1 | | Catalog Number | Accuracy/ Burden |
|------------------|----------------------|-----------------|----------------|--------------------|
| | Primary | Secondary | | |
| 4400 | 69000 | 115/69 & 115/69 | K76044P1000N | 1.2 0,W,X,M,Y,Z |
| 4400 | 69000 | 115/69 & 115/69 | K76044R1000N | 0.6 0,W,X,M,Y,Z |
| 4400 | 69000 | 115/69 & 115/69 | K76044M1000N | 0.3 0,W,X,M,Y,Z |
| 10000 | 69000 | 115/69 & 115/69 | K76100R1000N | 0.6 0,W,X,M,Y,Z |
| 10000 | 69000 | 115/69 & 115/69 | K76100M1000N | 0.3 0,W,X,M,Y,Z |
| 10300 | 69000 | 115/69 & 115/69 | K76103R1000N | 0.6 0,W,X,M,Y,Z |
| 10300 | 69000 | 115/69 & 115/69 | K76103M1000N | 0.3 0,W,X,M,Y,Z |
| 24000 | 69000 | 115/69 & 115/69 | K76240M1000N | 0.3 0,W,X,M,Y,Z |
| 24000 | 69000 | 115/69 & 115/69 | K76240Z1000N | 0.3 0,W,X,M,Y,Z,ZZ |

HIGH ACCURACY DDB-123

| Catalog Number | Accuracy/ Burden |
|--|------------------|
| Contact factory for cataloging information | -- |
| | -- |
| | 0.15 0,W,X,M,Y |
| | -- |
| | 0.15 0,W,X,M,Y |
| | 0.15 0,W,X,M,Y |

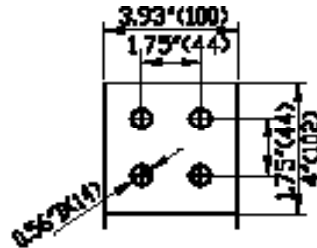
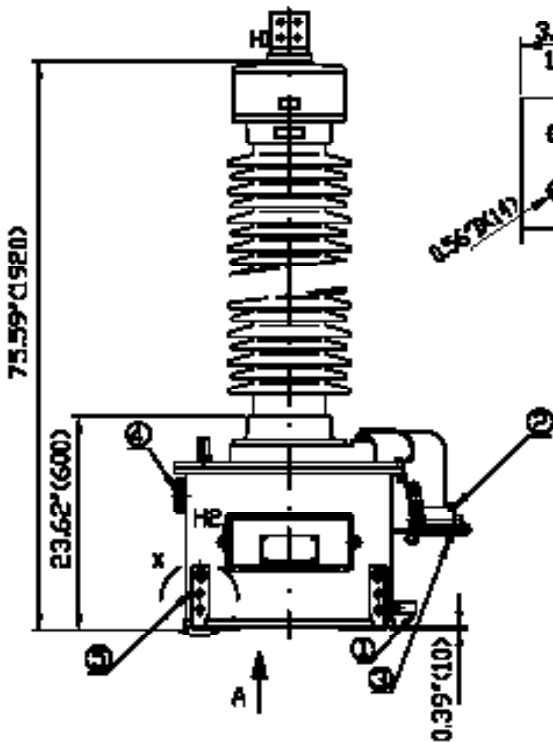
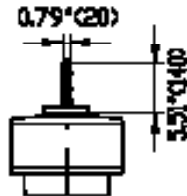
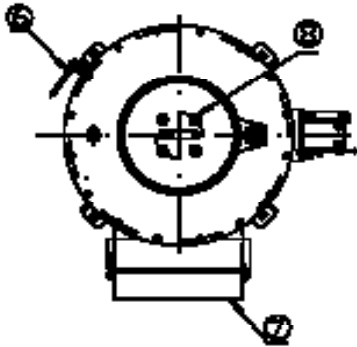
- Thermal burden rating (Typical): 1000VA (1500VA for 0.3 ZZ rated units).
- Overvoltage Ratings: 1.1x cont., 1.4x 1 min.
- Units available with carrier accessories. Change last letter of catalog number from N to C.

DESCRIPTION:

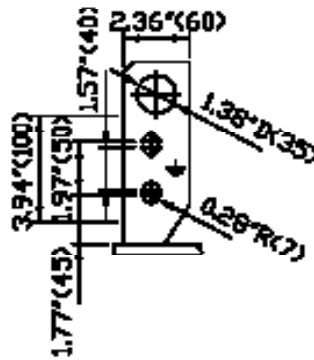
- 1 - OIL SAMPLING VALVE
- 2 - CARRIER ACCESSORIES (ON REQUEST)
- 3 - HF TERMINAL, MB
- 4 - OIL LEVEL INDIACTOR
- 5 - GROUND TERMINAL
- 6 - POTENTIAL GROUNDING SWITCH
- 7 - SECONDARY TERMINAL BOX
- 8 - WAVE TRAP MOUNTING PROVISION, (4)M12 x 1.18"(30) ON 14" (Ø127) BOLT CIRCLE

SPECIFICATIONS:

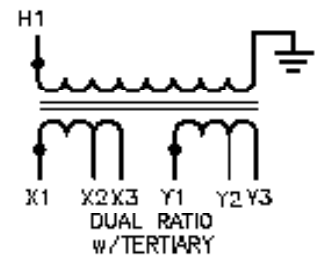
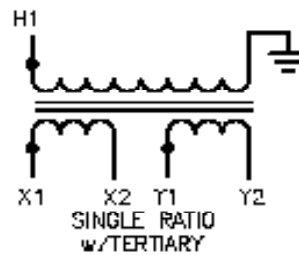
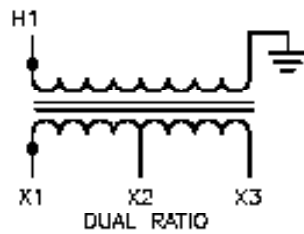
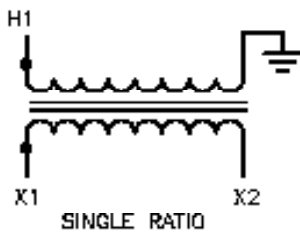
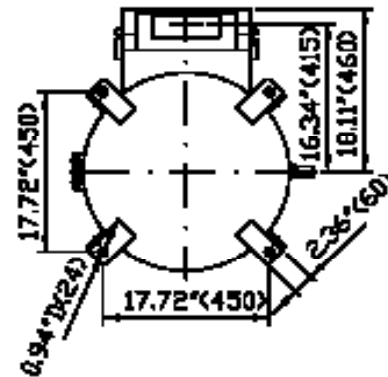
- A - MAX SYSTEM VOLTAGE: 123kV
- B - BASIC IMPULSE LEVEL: 550kV F.W.
- C - CREEPAGE: 144.28" (3685) Nominal
- D - STROKE DISTANCE: 44.28" (1125) Nominal
- E - APPROXIMATE OIL: 18 GAL (68L)
- F - APPROX. NET WEIGHT: 1070 Lbs (480kg)



DETAIL X



VIEW A



NOTE: OUTLINES ARE FOR REFERENCE ONLY. CONTACT FACTORY FOR ACTUAL DESIGN DRAWINGS.



application

The COF(CXM)-550 outdoor current transformer is rated for use on 115,000 volt systems with 550kV BIL. Primary current ratios are available from 5:5 to 3000:5 at 60 Hertz (Hz) with a Rating Factor of up to 4.0 (3200A max). This oil-filled current transformer will operate with high accuracy for metering or relay applications.

mechanical description

The tank dome is fabricated from carbon or stainless steel, depending on current rating. The units are pressure and vacuum tight and hermetically sealed at the factory to prevent breathing and oil contamination. Tank components are washed and coated with anticorrosive iron phosphate and then finished with ANSI 70 Gray baked-on electrostatic polyester powder. The bushing is ANSI 70 Gray, high strength porcelain with a high degree of stability for transportation and seismic withstand. The primary terminals are tin plated aluminum, NEMA 4-hole pads (copper for units rated $\geq 2000A$). A bypass protector is provided for all units rated below 1200:5 to protect from transients. The secondary terminals are #10 slotted screws on a short circuiting terminal block located behind a removable cover in the CT base with three (3) 1 1/2" NPT conduit hubs. The ground terminal is a stainless steel NEMA 2-hole pad. The unit is fitted with a pressure relief valve, oil level gauge, and 1/2" drain valve.

accuracy performance

The COF-550 will operate with 0.3 Class accuracy for metering applications with burdens of B0.1 to B1.8. The unit can be designed with relay accuracy up to C800. The transformer is accurate through its Rating Factor, and can be used continuously to this level. The CXM-550 will operate with 0.15 Class high accuracy for metering applications with burdens of B0.1 to B1.8. The transformer maintains 0.15 Class accuracy from 0.5% of I_{nom} through its Rating Factor, and can be used continuously to this level.



mounting

The COF(CXM) is designed for mounting on substations structures in a vertical only position with four mounting holes in the base.

testing

The unit is individually tested per the IEEE C57.13 standard, including applied and induced voltage, accuracy and polarity. Additional tests include dissipation and partial discharge tests. Partial discharge testing is performed to guarantee the unit is free of partial discharge through 135% of the nominal system voltage.

options

The COF(CXM) is available with an Extra Creep Bushing, Polymer Bushing, Stainless Steel Tank, 4kV spark gap and/or -50°C oil. The unit can be offered in single, dual or multiple core designs. Contact factory for other needs.

| ORDERING INFO FOR COF-550 | | | |
|---------------------------|----------------|---------------------|---------------|
| Ratio | Catalog Number | Accuracy/ Burden | Rating Factor |
| 5:5 | K950005SA | 0.3 B1.8 | 1.5 |
| 10:5 | K950010SA | 0.3 B1.8 | 1.5 |
| ⋮ | ⋮ | ⋮ | ⋮ |
| 150:5 | K950150SA | 0.3 B1.8 | 1.5 |
| 200:5 | K950200SA | 0.3 B1.8 | 1.5 |
| ⋮ | ⋮ | ⋮ | ⋮ |
| 3000:5 | K953000SA | 0.3 B1.8 | 1.0 |
| 5/10:5 | K950010DA | 0.3 B1.8/B1.8 | 2.0/1.5 |
| 10/20:5 | K950020DA | 0.3 B1.8/B1.8 | 2.0/1.5 |
| ⋮ | ⋮ | ⋮ | ⋮ |
| 100/200:5 | K950200DA | 0.3 B1.8/B1.8 | 2.0/1.5 |
| 150/300:5 | K950300DA | 0.3 B1.8/B1.8 | 2.0/1.5 |
| ⋮ | ⋮ | ⋮ | ⋮ |
| 1000/2000:5 | K952000DA | 0.3 B1.8/B1.8 | 2.0/1.5 |
| 1500/3000:5 | K953000DA | 0.3 B1.8/B1.8 | 2.0/1.0 |

| HIGH ACCURACY CXM-550 | | |
|-----------------------|------------------------|---------------|
| Catalog Number | 0.15 B1.8 Acc Range | Rating Factor |
| K890005SA | 0.025 to 20A | 4.0 |
| K890010SA | 0.05 to 40A | 4.0 |
| ⋮ | ⋮ | ⋮ |
| K890150SA | 0.75 to 600A | 4.0 |
| K890200SA | 1 to 800A | 4.0 |
| ⋮ | ⋮ | ⋮ |
| K893000SA | 15 to 3200A | 1.07 |
| -- | -- | -- |
| -- | -- | -- |
| -- | -- | -- |
| -- | -- | -- |
| -- | -- | -- |
| -- | -- | -- |
| -- | -- | -- |

- Available in multi-ratio designs (full tap ratings same as single ratio above).
- 1 Second Thermal/Mechanical Rating: Single Ratio (150x Inom), Dual Ratio (75x full winding Inom), 144kA max.



application

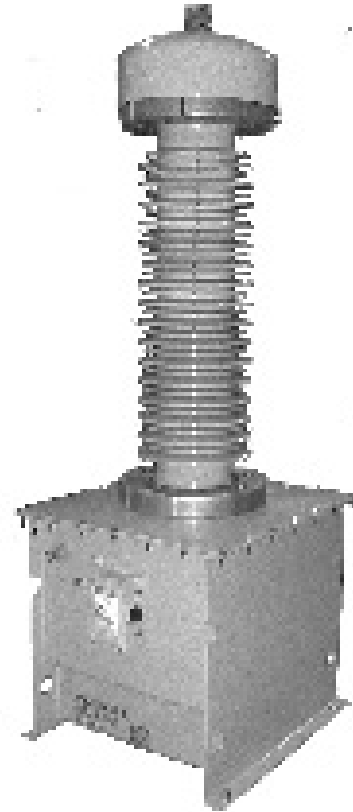
The SSVT-550 outdoor station service voltage transformer is rated for use on 115,000 volt systems with 550kV BIL. The unit is a station service voltage transformer with power and can be supplied with metering rated secondary winding(s). It provides a convenient and cost effective means of serving small power and/or metering requirements directly from a transmission line. Standard 125/250V nominal power winding designs are available with thermal ratings of 25, 50, 100 kVA and higher. Primary voltage measurement ratios are available from 525:1 to 1000:1 for use on 115,000 volt systems, at 60 Hertz (Hz). This oil-filled station service voltage transformer will provide control power and can provide high accuracy for metering or relay applications.

mechanical description

The tank and expansion chambers are steel plate, pressure and vacuum tight and hermetically sealed at the factory to prevent breathing and oil contamination. Expansion chambers allow for the expansion/contraction of oil for temperature and load fluctuations. Tank components are washed and coated with anticorrosive iron phosphate and then finished with ANSI 70 Gray baked-on electrostatic polyester powder. The primary bushing is ANSI 70 Gray, high strength porcelain with a high degree of stability for transportation and seismic withstand. The primary terminal is a stainless steel, NEMA 4-hole pad. The secondary station service power terminals are 1"-14 externally mounted studs housed in an ANSI 4X low voltage terminal box separate from metering with a removable plate and 6" x 20" opening in the bottom for conduit entry. They are offered with high conductivity, tin plated aluminum, 2-hole set screw connectors suitable for 1/0 to 750MCM conductors terminals. The neutral, tank ground connector accepts 1/0 to 750 MCM conductors. The secondary metering terminals are 1/4"-20 copper studs with associated hardware located inside a removable terminal box with three (3) 1 1/2" NPT conduit hubs. The ground terminal is a stainless steel NEMA 2-hole pad. The unit is fitted with a 5kV H₀ Bushing, pressure relief valve, oil level gauge, 3/4" oil fill plug, and 3/4" drain valve.

accuracy performance

The SSVT-550 will operate with nominal 125/250V control power output and if specified, a 0.15 Class metering accuracy for burdens of 0, W, X, M, Y, Z and ZZ. The transformer is accurate from 90% to 110% of rated primary voltage. Unique to the SSVT design is the ability to power motor loads of up to 10% of the transformer kVA rating and metering/relaying simultaneously.



mounting

The SSVT is designed for mounting on substations structures in an upright position with four mounting holes in the base.

testing

The unit is individually tested per the IEEE C57.13 standard, including applied and induced voltage, accuracy and polarity. Additional tests include dissipation and partial discharge tests. Partial discharge testing is performed to guarantee the unit is free of partial discharge through 135% of the nominal system voltage.

options

The SSVT is available with an Extra Creep Bushing, Polymer Bushing, Stainless Steel Tank and/or Dome, one or two secondary metering windings, one or two CTs, de-energized taps and/or -50°C oil. Other secondary terminal connectors include Clamp Type for up to 1000MCM or NEMA 4-hole Pads. Contact factory for other needs.

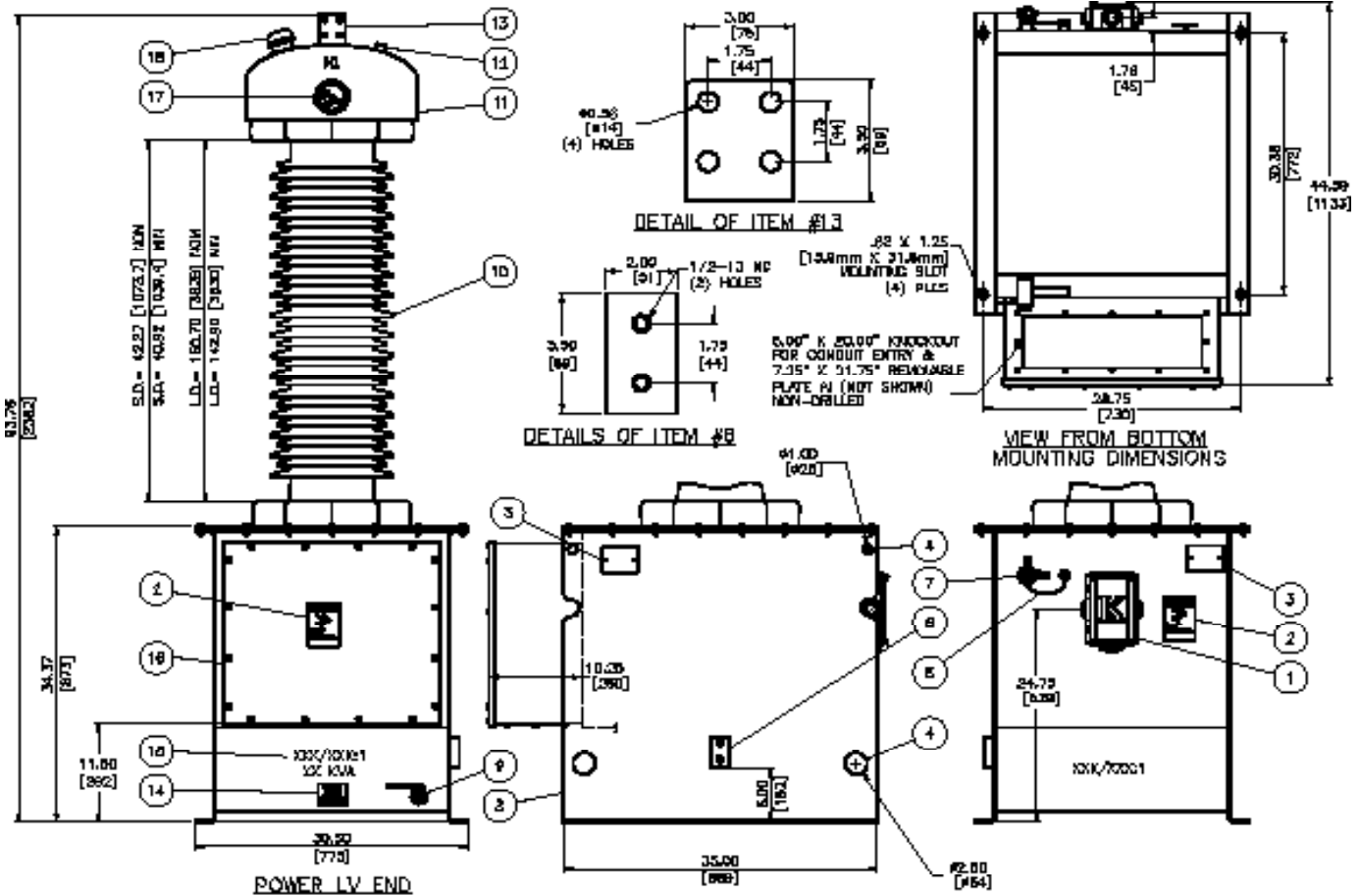
ORDERING INFO FOR SSVT-550

| kVA Rating | Primary Voltage | Secondary Volts | | Catalog Number | | Metering Accuracy/Burden |
|------------|-----------------|-----------------|----------|----------------|--------------|--------------------------|
| | | Power° | Metering | w/o Metering | w/ Metering* | |
| 25 | 69000 | 125/250 | 115/69 | K99N545025B | K99M545025B | 0.15 0,W,X,Y,Z,ZZ |
| 50 | 69000 | 125/250 | 115/69 | K99N545050B | K99M545050B | 0.15 0,W,X,Y,Z,ZZ |
| 100 | 69000 | 125/250 | 115/69 | K99N562100B | K99M562100B | 0.15 0,W,X,Y,Z,ZZ |

*For two metering secondaries, change M to D in catalog no.

°Nominal output. Actual rated output is supplied on unit nameplate.

- Overvoltage Ratings: 1.1x cont., 1.73x 1 min.



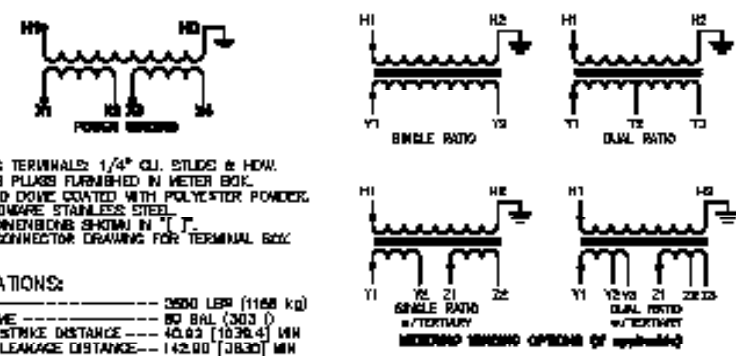
| | | |
|------|---|-----|
| 18 | TOP 1/4" DIA. 3/16" DIA. + 1/16" PRESSURE WEDGE | |
| 17 | DC LEAK CHECK, ELECTRICALLY ISOLATED | |
| 16 | TERMINAL BOX, SEE CONNECTOR DRAWING | |
| 15 | METER RATIO AND DUAL RATIO | |
| 14 | METER BOX | |
| 13 | METER BOX | |
| 12 | TERMINAL BOX, SEE CONNECTOR DRAWING | |
| 11 | 1/4" DIA. 1/16" DIA. 1/16" DIA. 1/16" DIA. | |
| 10 | TERMINAL BOX, SEE CONNECTOR DRAWING | |
| 9 | TERMINAL BOX, SEE CONNECTOR DRAWING | |
| 8 | TERMINAL BOX, SEE CONNECTOR DRAWING | |
| 7 | TERMINAL BOX, SEE CONNECTOR DRAWING | |
| 6 | TERMINAL BOX, SEE CONNECTOR DRAWING | |
| 5 | TERMINAL BOX, SEE CONNECTOR DRAWING | |
| 4 | TERMINAL BOX, SEE CONNECTOR DRAWING | |
| 3 | TERMINAL BOX, SEE CONNECTOR DRAWING | |
| 2 | TERMINAL BOX, SEE CONNECTOR DRAWING | |
| 1 | TERMINAL BOX, SEE CONNECTOR DRAWING | |
| 1124 | DESCRIPTION | 601 |

NOTES:

- METERING TERMINALS: 1/4" CL. STUDS & HOW.
- BLANKING PLUGS FURNISHED IN METER BOX.
- TANK AND COVER COATED WITH POLYESTER POWDER.
- ALL HARDWARE STAINLESS STEEL.
- METRIC DIMENSIONS SHOWN IN "T".
- SEE LV CONNECTOR DRAWING FOR TERMINAL BOX LAYOUT.

SPECIFICATIONS:

- WEIGHT ----- 3500 LBS (1588 kg)
- OIL VOLUME ----- 80 GAL (303 l)
- BUSHING STRIKE DISTANCE ----- 42.00 (1067) MM
- BUSHING LEAKAGE DISTANCE ----- 142.00 (3630) MM



NOTE: OUTLINES ARE FOR REFERENCE ONLY. CONTACT FACTORY FOR ACTUAL DESIGN DRAWINGS.



KA-123(KXM-550) 1 Ø Metering Unit

Outdoor 115kV, 550kV BIL, Single, Dual & Multi Ratios
Oil-Filled, Wound Type, 1Ø Metering

115000 Volt

March 2008

application

The KA-123(KXM-550) outdoor single phase metering unit is rated for use on 115,000 volt systems with 550kV BIL. Primary current ratios are 5:5 to 4000:5 for 60 Hertz (Hz) with a Rating Factor of up to 4.0 (4800A max). Primary line to ground rated voltage ratios are available from 480:1 to 1000:1 for use on 115,000 volt systems. This oil-filled metering unit will operate with high accuracy for metering applications.

mechanical description

The transformer contains two fully insulated coils for both current and voltage measurement. The tank is steel plate, pressure and vacuum tight and hermetically sealed at the factory to prevent breathing and oil contamination. The dome is corrosion resistant aluminum and contains stainless steel expansion bellows to allow for the expansion/contraction of oil for temperature and load fluctuations. The bellows maintain constant pressure on the oil under various ambient and load conditions to allow for horizontal shipment. Tank components are shot-blasted, washed and coated with a heavy galvanized finish, effectively making the unit paint-free. The primary bushing is ANSI 70 Gray, high strength porcelain with a high degree of stability for transportation and seismic withstand. The primary terminals are tin plated aluminum, NEMA 4-hole pads (copper for units rated above 1800A). An adjustable primary spark gap is provided for all units to protect from high transients. The secondary terminals are M8 hex head bolts with associated hardware located inside a hinged cover, terminal box with three (3) 1 1/2" NPT conduit hubs. The ground terminal is an integral NEMA 2-hole configuration on the tank wall. The unit is fitted with a 5kV H₀ terminal, oil level indicator, and oil sampling valve.

accuracy performance

The KA-123 will operate, for the current transformer, with 0.3 Class accuracy for metering with burdens of B0.1 to B1.8. The CT is accurate through its Rating Factor, and can be used continuously to this level. The unit will operate, for the voltage

transformer, with 0.3 Class accuracy for metering with burdens of 0, W, X, M, Y, Z and ZZ. The VT is accurate from 90% to 110% of rated primary voltage. The KXM-550 will operate, for the current transformer, with 0.15 Class high accuracy for metering applications with burdens of B0.1 to B1.8. The transformer maintains 0.15 Class accuracy from 0.5% of I_{nom} through its Rating Factor, and can be used continuously to this level. The unit can be provided, for the voltage transformer, with 0.15 Class accuracy for metering with burdens of 0, W, X, M, Y and Z. The VT is accurate from 90% to 110% of rated primary voltage.

mounting

The KA(KXM) is designed for mounting on substation structures in an upright position with four mounting holes in the base.

testing

The unit is individually tested per the IEEE C57.13 standard, including applied and induced voltage, accuracy and polarity. Additional tests include dissipation and partial discharge tests. Partial discharge testing is performed to guarantee the unit is free of partial discharge through 135% of the nominal system voltage.

options

The KA(KXM) is available with an Extra Creep Bushing, Polymer Bushing, Stainless Steel Tank, and/or -50°C oil. The unit can be offered in single, dual or multiple core designs. Contact factory for other needs.



ORDERING INFO FOR KA-123

| Voltage Ratings | Ratio* - 600/1000:1:1 | Accuracy/Burden |
|-----------------|-----------------------|----------------------------------|
| | | Pri*:Sec - 69000:115/69 & 115/69 |

HIGH ACCURACY KXM-550

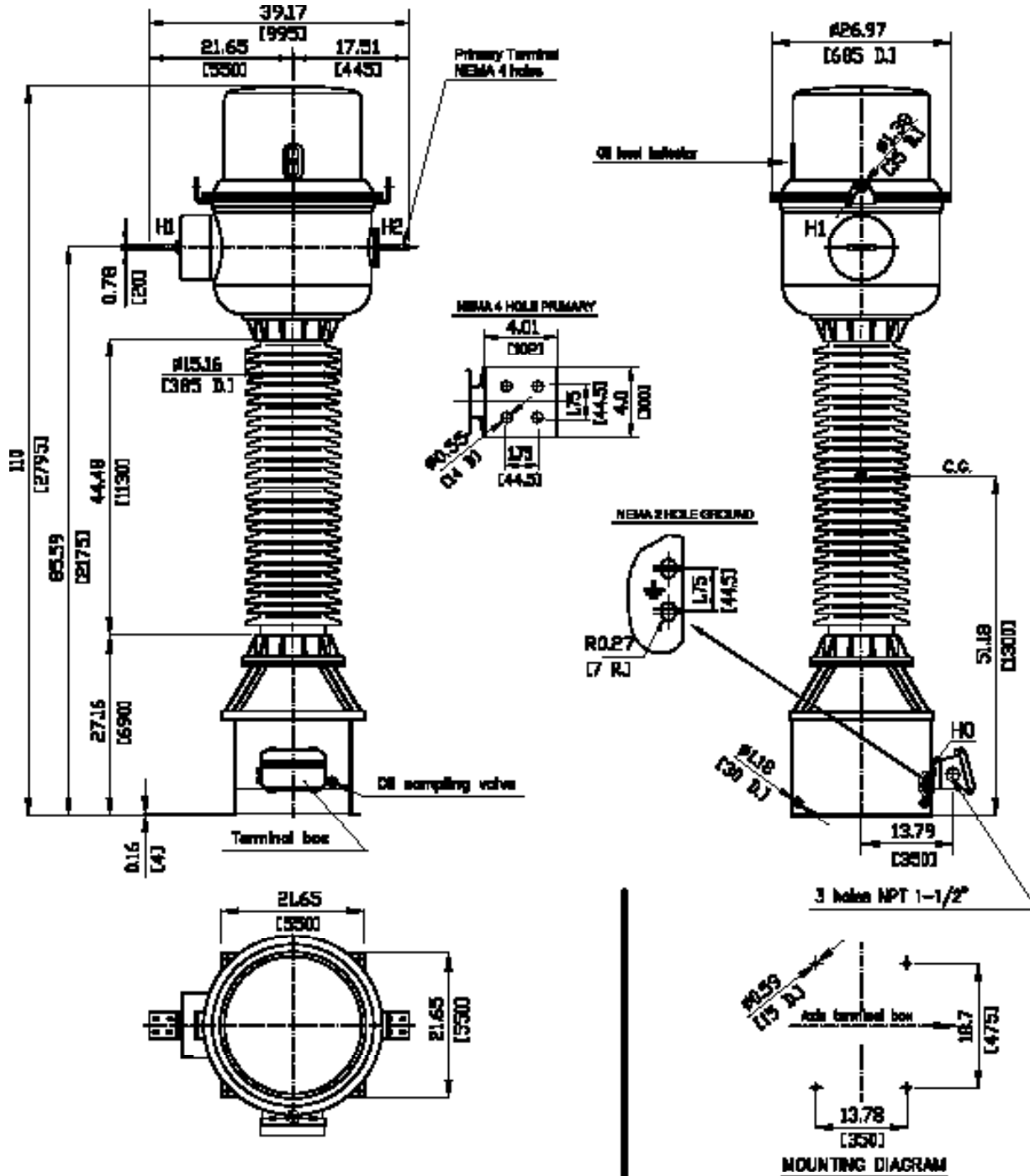
| Accuracy/Burden |
|--------------------|
| 0.3 0,W,X,M,Y,Z,ZZ |

| Current Ratio | Catalog Number | Accuracy/Burden | Rating Factor | Catalog Number | 0.15 B1.8 Acc Range | Rating Factor |
|---------------|----------------|-----------------|---------------|----------------|---------------------|---------------|
| 5:5 | K751000T005S | 0.3 B1.8 | 1.5 | K751000T005X | 0.025 to 20A | 4.0 |
| 10:5 | K751000T010S | 0.3 B1.8 | 1.5 | K751000T010X | 0.05 to 40A | 4.0 |
| ⋮ | ⋮ | ⋮ | ⋮ | ⋮ | ⋮ | ⋮ |
| 100:5 | K751000T100S | 0.3 B1.8 | 1.5 | K751000T100X | 0.5 to 400A | 4.0 |
| 150:5 | K751000T150S | 0.3 B1.8 | 1.5 | K751000T150X | 0.75 to 600A | 4.0 |
| ⋮ | ⋮ | ⋮ | ⋮ | ⋮ | ⋮ | ⋮ |
| 4000:5 | K751000T402S | 0.3 B1.8 | 1.0 | K751000T402X | 20 to 4800A | 1.2 |
| 5/10:5 | K751000T005D | 0.3 B1.8/B1.8 | 2.0/1.5 | -- | -- | -- |
| 10/20:5 | K751000T010D | 0.3 B1.8/B1.8 | 2.0/1.5 | -- | -- | -- |
| ⋮ | ⋮ | ⋮ | ⋮ | -- | -- | -- |
| 2000/4000:5 | K751000T202D | 0.3 B1.8/B1.8 | 2.0/1.0 | -- | -- | -- |

* Available in other Primary Voltage Ratings. - Thermal Burden Rating (Typical): 3000VA.

- Overvoltage Ratings: 1.1x cont., 1.9x 8 hours.

- 1 Second Thermal/Mechanical Rating: KA (75x full winding I_{nom}), KXM (150x I_{nom}), 80kA max.



NOTES:

1. THREE WEATHERPROOF BLANKING PLUGS ARE FURNISHED IN TERMINAL BOX.
2. SECONDARY TERMINALS ARE M8 HEX HEAD BOLTS WITH ASSOCIATED HARDWARE.
3. GROUND PAD HARDWARE IS SUPPLIED ONLY WHEN GROUND CONNECTORS ARE REQUESTED AND SUPPLIED WITH THE UNIT.

SPECIFICATIONS in SI (METRIC)

1. APPROX. NET WEIGHT - 1540 LBS. (700 kg)
2. APPROX. OIL - 60 GAL. (227 L)
3. CREEPAGE - 154" (3910mm)
4. STROKE - 44.48" (1130mm)

