

- Flexible for compact switchgear
- Oil in branch area prevents discharges

Cable termination, indoor for paper-insulated cable OTIA 12 kV

Use

Indoor termination for paper-insulated 3-core cables 12 kV.

Standards

Meets the requirements of:
– SEN 24 14 34

Rated pressure

0.3 MPa (overpressure)

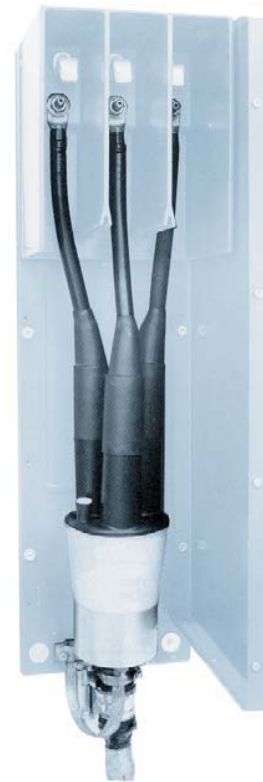
Design

The housing is made of cross-linked HD-polyethylene (XLPE) with a transparent lower part, so that the oil level can be seen.

A spring-loaded gasket type FPA provides a seal between cable and housing, as well as electrical contact between cable screen and housing.

A GEX expansion vessel can be connected to the filling opening for the oil.

The paper-insulated cable is jointed in the upper part of the housing to a flexible connecting cable. The length is 900 mm and must be pressed with the Elpress press system. The Pfisterer press system can be used for Al conductors (for Simel press system, please contact us). As an alternative, screw connection is available for Cu conductors for certain cross sections.



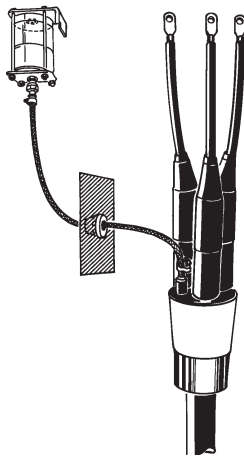
Designation	Conductor cross section		Suitable spring loaded gasket	Weight kg/item
	Al	Cu		
	mm ²			
OTIA 152	35-240	25-240	FPA	4.1

To be ordered separately

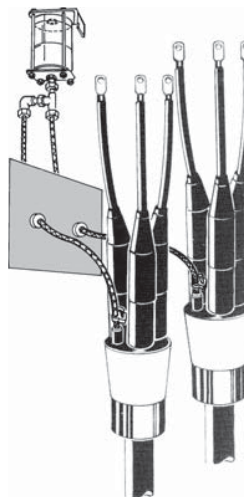
Designation	Description	See page
GEX	Expansion vessel	62
AK-ASA, K-ASA, K-ASB	Connecting cable	62
SKSB	Cable lug	59
FPA	Spring-loaded gasket	69

Accessories for OTIA

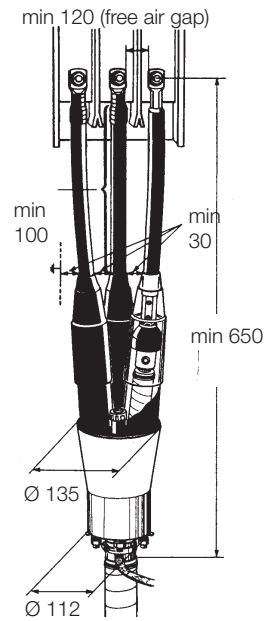
All dimensions in mm



GEX 01
Expansion vessel
for one OTIA 152.



GEX 02
Expansion vessel
for two OTIA 152.



OTIA 152

Designation	For use with	Weight kg/item
GEX 01	One OTIA	2.0
GEX 02	Two OTIA	2.0

Flexible connecting cable. Each kit contains one connecting cable (length 900 mm).

Designation	Conductor cross section		Cross section of connecting conductor Cu flexible mm ²	Max short-circuit current kA	Max continuous rating A	Weight kg/item
	Al mm ²	Cu mm ²				
Press type connecting cable						
AK-ASA 3535-9	35	-	35	6.2	200	0.6
AK-ASA 5035-9	50	-	35	6.2	200	0.6
AK-ASA 7035-9	70	-	35	6.2	200	0.6
AK-ASA 95150-9	95	-	150	16.6	350	1.2
AK-ASA 120150-9	120	-	150	16.6	350	1.2
AK-ASA 150150-9	150	-	150	16.6	350	1.2
AK-ASA 185150-9	185	-	150	16.6	350	1.2
AK-ASA 240150-9	240	-	150	26.1	500	1.8
K-ASA 185150-9	-	185	150	26.1	500	1.8
K-ASA 240150-9	-	240	150	26.1	500	1.8
Screw type connecting cable						
K-ASB 7035-9	-	35-70	35	6.2	500	0.8
K-ASB 150150-9	-	95-150	95	16.6	500	1.2

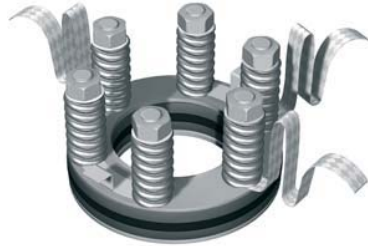
- No special tools
- No soldering

Spring-loaded gaskets for paper-insulated cables

The diameter of the lead sheathed cable should be measured.



FPA
Ø 100 mm for belted cables.



FP
Ø 150 mm for belted cables.



FPMP
Ø 150 mm, 3-hole gasket, non-magnetic design for separate lead-sheathed cables.

Designation	Diameter over lead sheath mm	Weight kg/item
FPA 1021	18-21	1.2
FPA 1024	21-24	1.2
FPA 1027	24-27	1.1
FPA 1030	27-30	1.1
FPA 1033	30-33	1.1
FPA 1036	33-36	1.1
FPA 1039	36-39	1.0
FPA 1042	39-42	1.0
FPA 1045	42-45	1.0
FPA 1048	45-48	1.0
FPA 1051	48-51	1.0
FPA 1054	51-54	0.9
FPA 1057	54-57	0.9
FPA 1060	57-60	0.9
FPA 1063	60-63	0.9
FPA 1065	63-66	0.9

Designation	Diameter over lead sheath mm	Weight kg/item
FP 1530	25-30	4.2
FP 1535	30-35	4.2
FP 1540	35-40	4.3
FP 1545	40-45	4.1
FP 1550	45-50	4.2
FP 1555	50-55	3.9
FP 1560	55-60	4.1
FP 1565	60-65	4.0
FP 1570	65-70	3.9
FP 1575	70-75	3.8
FP 1580	75-80	3.9
FP 1585	80-85	4.0

Designation	Diameter over lead sheath mm	Weight kg/item
FPMP 1523	20-23	4.5
FPMP 1526	23-26	4.4
FPMP 1529	26-29	4.4
FPMP 1532	29-32	4.4
FPMP 1535	32-35	4.2
FPMP 1538	35-38	4.1
FPMP 1540	38-40	4.2

General accessories for paper-insulated cable joints and transition joints



GC
The kit contains one sealing ring, screws and two roomy clamp halves for Ø 100 mm joint tubes. The clamps are made from glass fibre reinforced polymer. The bolt and washer are moulded into the material. Used on the XLPE side of the transition joints; SMTXB 1502/1522/1532 when installing 1-core cables with an outer diameter greater than 40 mm.



IA 2502 - 2519
Bituminized paper for filling, for example in cable clamps.



RKM 402
Funnel for oil filling.



IA 1003
Stress controlling tape.



IA 2112 - 2113
Impregnated crepe paper tape.



IKP
Impregnated carbon crepe paper (conductive).

Designation	Use	Length m	Width mm	Thickness mm	Weight kg/item
GC	SMTXB with Ø 100 joint tube	Cable Ø 40-45	–	–	0.72
IA 1003	Paper-insulated cable joint	–	–	–	0.13
IA 2112	Paper-insulated cable joint	9	10	–	0.40
IA 2113	Paper-insulated cable joint	9	24	–	0.60
IA 2502	For filling cable clamps	3	83	0.5	0.20
IA 2508	For filling cable clamps	14	200	0.5	1.40
IA 2518	For filling cable clamps	10	83	0.5	0.50
IA 2519	For filling cable clamps	14	100	0.5	0.75
IKP	–	–	–	–	0.30
RKM 402	For oil filling	–	–	–	0.10

Accessories for paper-insulated cable joints and transition joints



IG 1201
Cold insulating bitumen compound for cable clamps.



IG 1601, IG 1604
Insulating oil, for joints and terminations for paper-insulated cables 12-52 kV. Need not be heated at temperatures exceeding +10°C.



IG 1717, 1718
Insulating film made of transparent polyester for transition joints and for paper-insulated cables 12-24 kV, type SMTXB and SMTD.



IK 1002
Linen yarn.



IK 1003
Polyester tape.

Designation	Length m	Width mm	Volume l	Weight kg/item
IG 1201	–	–	–	1.3
IG 1601	–	–	1.0	1.0
IG 1604	–	–	4.0	4.1
IG 1717	1.7	457	–	0.3
IG 1718	1.5	711	–	0.2
IK 1002	5	–	–	0.2
IK 1003	4x1.5	2.5	–	0.1

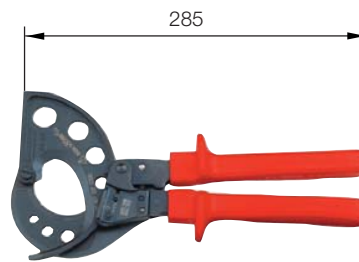
Tools



730 R

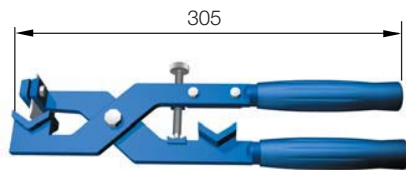
Torque wrench for screw connectors, screw cable lugs, overhead line clamps, etc. Supplied with 7 mm socket head, extension and 8 mm internal hexagon head.

Torque range 6-50 Nm.



Intercable No. RKS 1607 054

Cable shears for cutting cable
Ø max 54 mm.



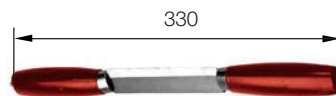
RKM 1055

Splitting tool for longitudinal splitting off XLPE-insulation with Ø 10-55 mm.



RKM 670

Cable knife, 30 mm blade.



RKM 672

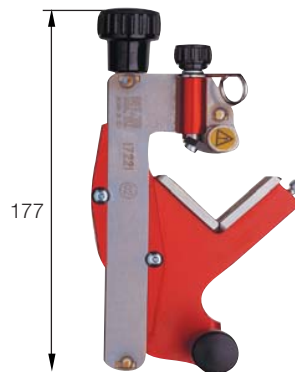
Sheath removing knife with two handles for plastic sheathed cable.

Designation	Description
730 R	Torque wrench
RKS 1607 054	Cable shears
RKM 1055	Peeling tool
RKM 1055 K	Spare blade for RKM 1055
RKM 670	Cable knife
RKM 672	Sheath removing knife

Tools



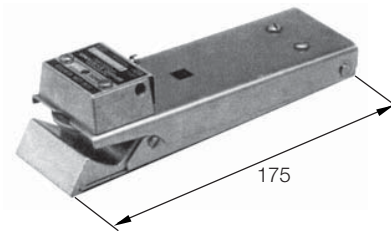
Intercable No. AV 6220
Sheath removing tool for
PE-sheathed cable $\varnothing > 20$ mm.



Intercable No. FBS 1722 1
Stripping tool for the vulcanized, outer
conducting layer of XLPE-insulated
cable $\varnothing 10-52$ mm.
The tool is supplied in a rigid case
with a tube of silicone grease.



GB-M20
Cutting tool for cable sheath
and XLPE-insulation:
Diameter: $\varnothing 15-50$ mm
Cutting depth: ≤ 8 mm



Model 1700 Series
Peeling tool for strippable outer
conductive layer on XLPE-insulated
cable $\varnothing 13-51$ mm.

Designation	Description
AV 6220	Sheath removing tool
FBS-1722 1	Stripping tool
GB-M20	XLPE stripping tool
Model 1700 Series	Peeling tool