



Product Brochure

Generator Circuit-Breakers HGI 2/3

Technical Data

Generator circuit-breaker system type

HGI 2

HGI 3

General

Rated maximum voltage	kV	17.5 ¹⁾	21.0 ¹⁾
Rated frequency	Hz	50/60	50/60
Rated continuous current	A rms	up to 6300	up to 8000

Rated insulation level

Rated power frequency withstand voltage			
to earth and across circuit-breaker/switch contacts	kV rms	up to 50	up to 60
Rated lightning impulse withstand voltage			
to earth and across circuit-breaker/switch contacts	kV peak	up to 110	up to 125

Circuit-breaker

Rated peak withstand current	kA peak	138	190
Rated short-time withstand current	kA, 3s	50	63
Rated short-circuit making current	kA peak	138	190
Rated short-circuit breaking current	kA rms	50	63 ²⁾
Rated operating sequence		CO - 30min - CO	
Rated interrupting time	ms	55	48

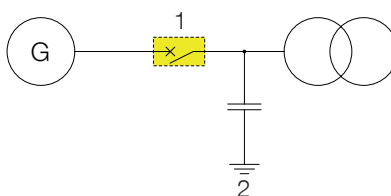
¹⁾ up to 24kV on request

²⁾ Provided that surge capacitors of 100 nF on the transformer side are installed

The above data are not limiting values. Additional data on request. We reserve the right to alter data and technical details without notice.

Single-line diagram

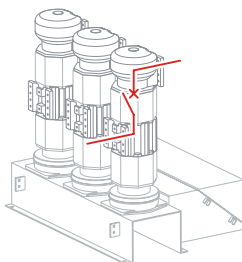
- 1 Generator circuit-breaker
- 2 Capacitor 100 nF



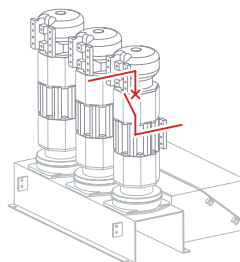
Terminal configurations

For both frame sizes the terminal configurations as shown in adjacent Figure, can be selected:

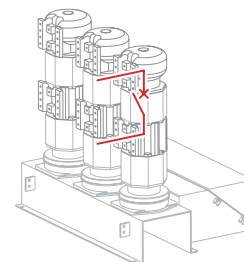
With horizontal operating mechanism Var. S, Z and U,
with vertical operating mechanism Var. S, Z and C.



Var. S

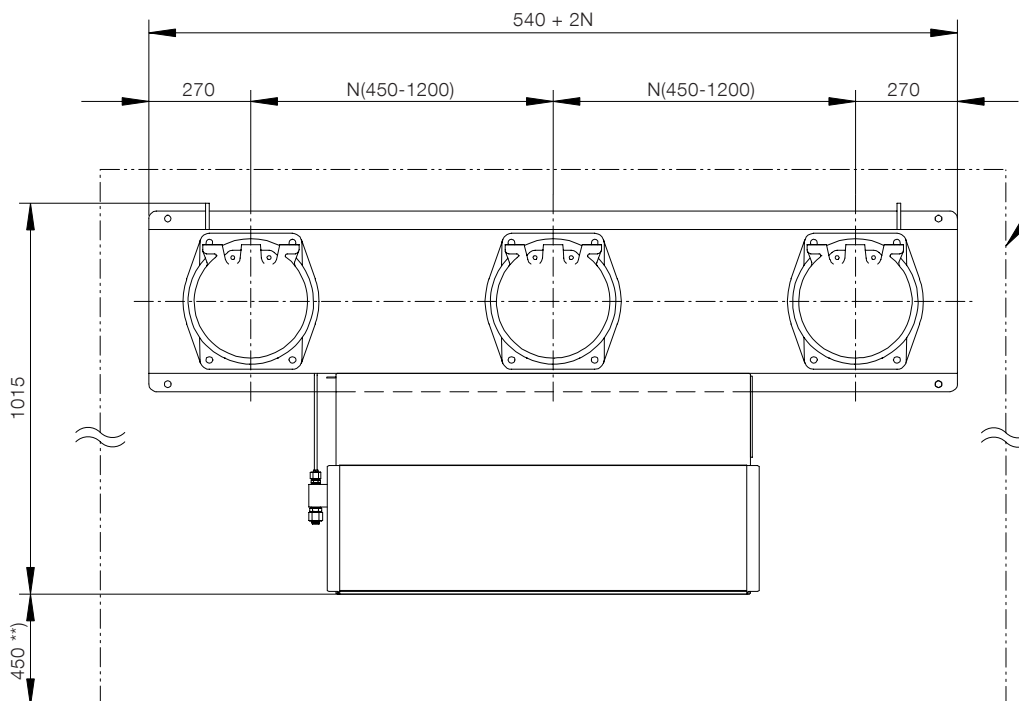
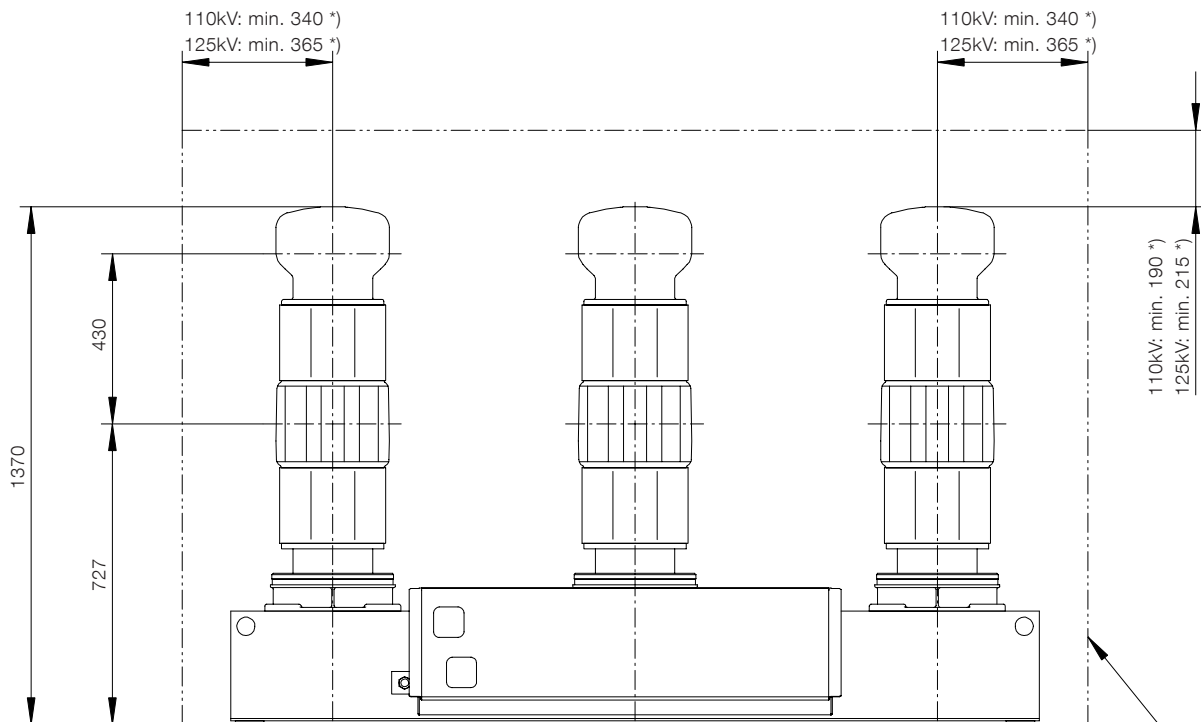


Var. Z



Var. U, C

Dimension Drawing HGI 2 horizontal



Clearance required for safety (protective barriers are excluded from ABB scope of supply)

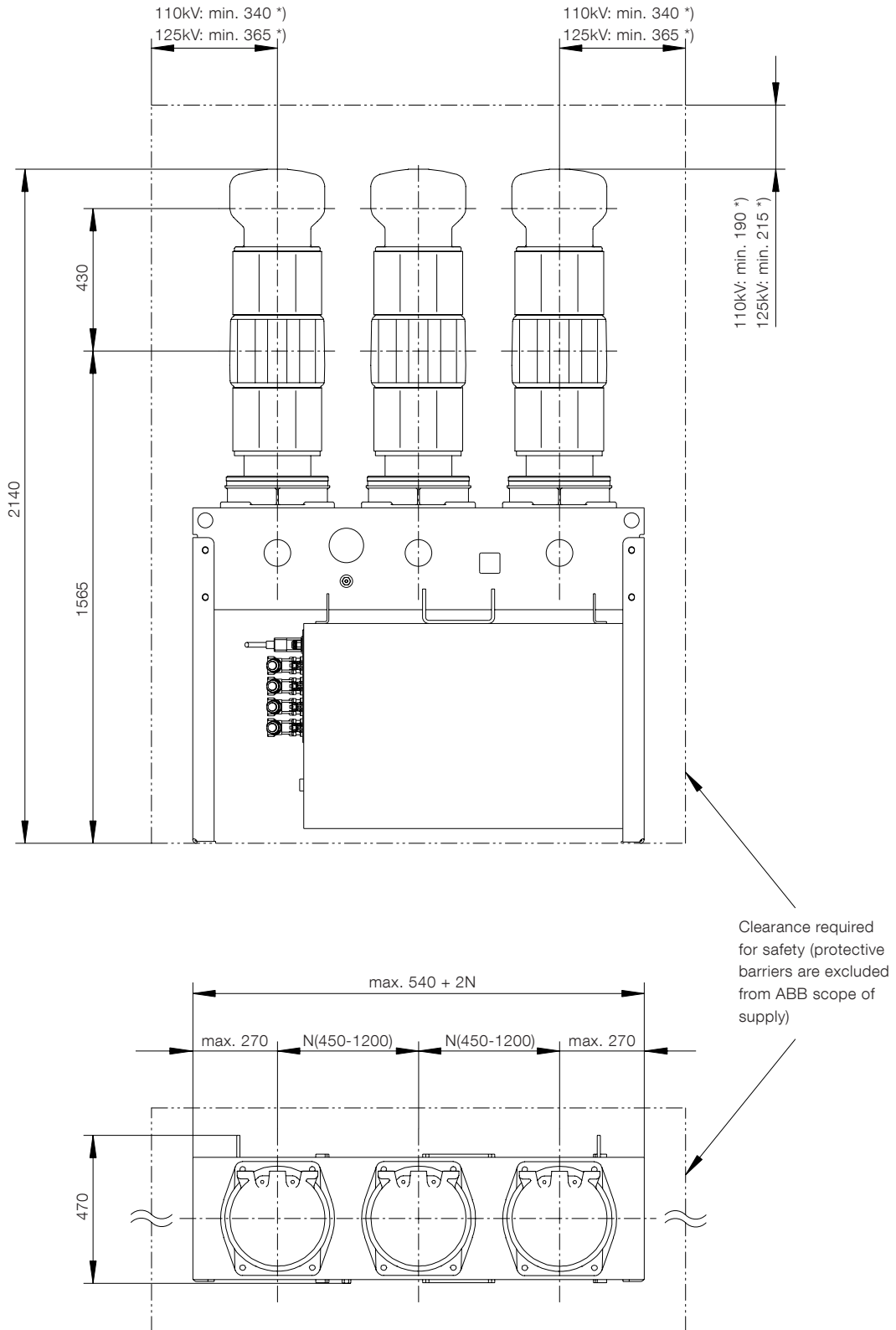
N = Phase distance

*) min. clearance to any object (dielectric dimensioning rules)

***) min. space required for operation and maintenance

Dimension Drawing

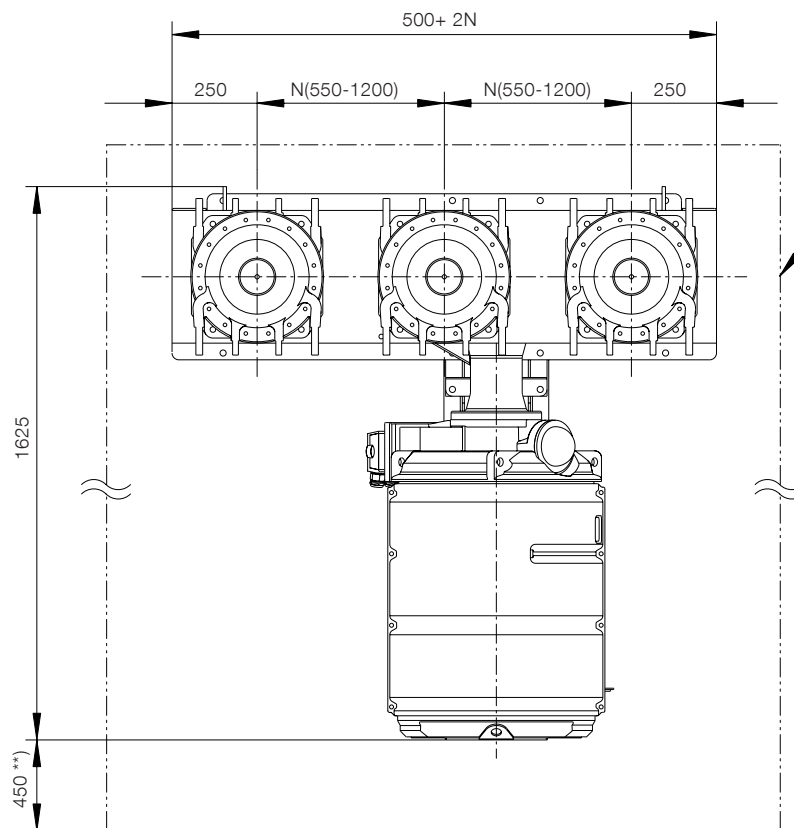
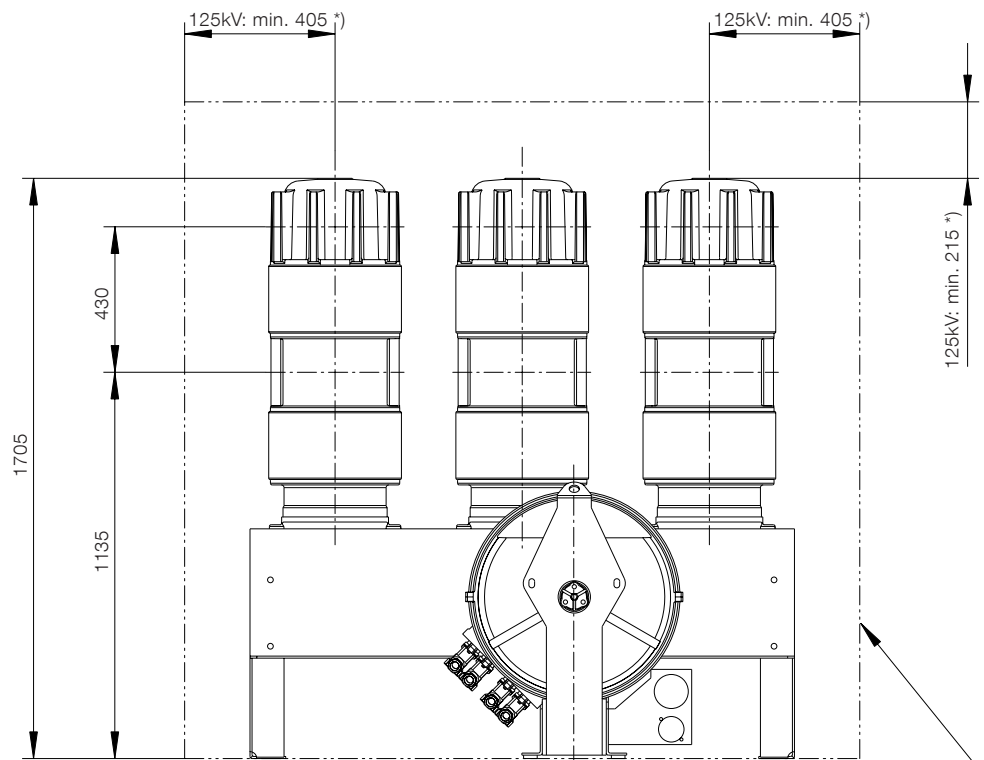
HGI 2 vertical



N = Phase distance

*) min. clearance to any object (dielectric dimensioning rules)

Dimension Drawing HGI 3 horizontal



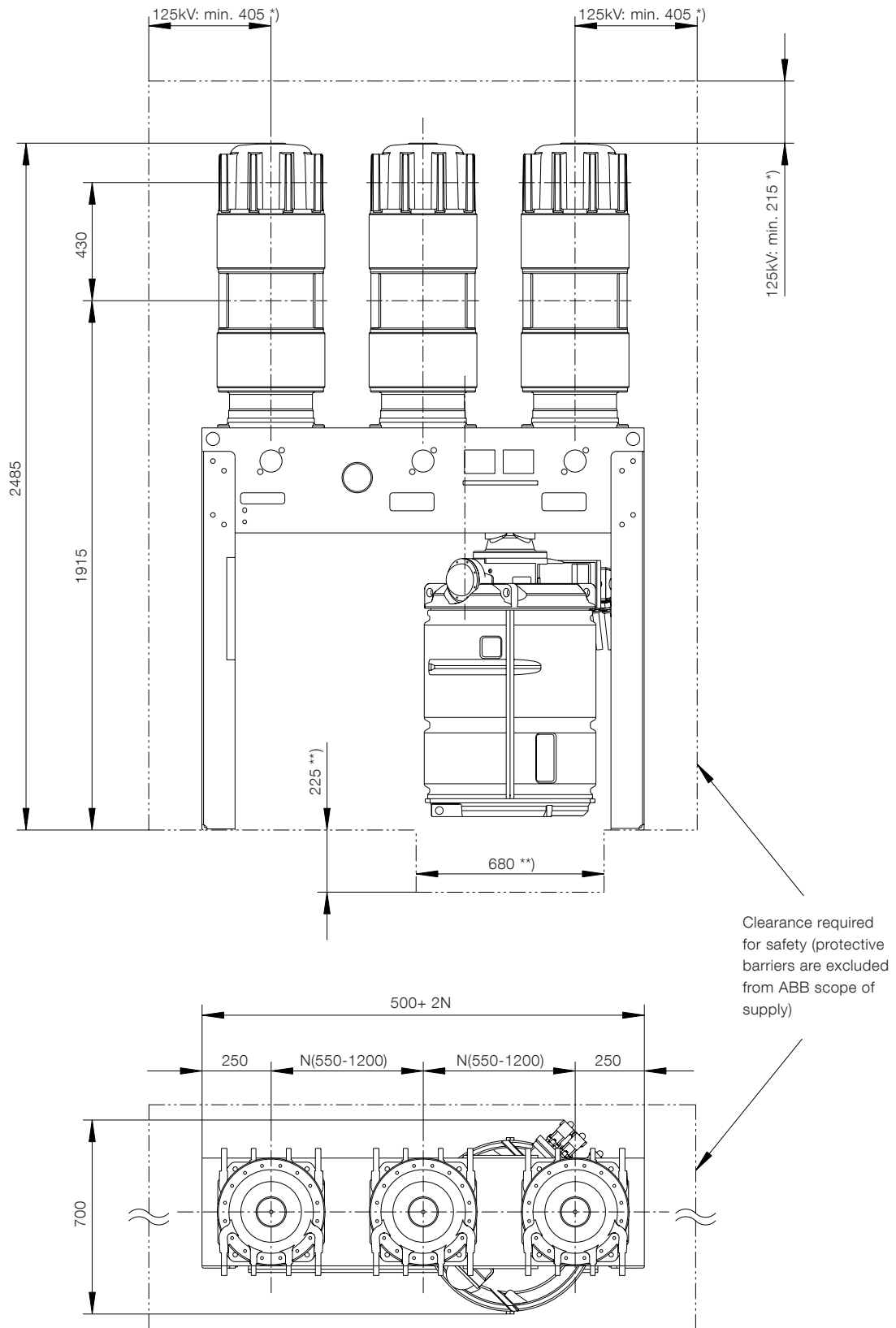
Clearance required for safety (protective barriers are excluded from ABB scope of supply)

N = Phase distance

*) min. clearance to any object (dielectric dimensioning rules)

**) min. space required for operation and maintenance

Dimension Drawing HGI 3 vertical



N = Phase distance

*) min. space required to any object (dielectric dimensioning rules)

**) min. space required for operation and maintenance

Contact us

ABB Switzerland Ltd

High Voltage Products

Brown Boveri Strasse 5

CH-8050 Zurich / Switzerland

Phone: +41 58 588 34 24

Fax: +41 58 588 16 44

www.abb.com/gcb