

## Cable joint, premoulded with cold shrink outer sheath SOJ 12-24 kV

- Cold-applied
- No special tools
- Premoulded for easy and safe installation
- Active pressure
- Few components
- Long shelf life
- Reliable
- Joint bodies routine-tested

### Use

Premoulded cable joint for XLPE-insulated 1- or 3-core cables with Al or Cu conductors, 12-24 kV.

### Standards

- HD 629.1 S1
- IEEE 404 1993
- SS 424 14 45 Edition 1
- VDE 0278
- KEMA S8

### Design

The joint body is made of rubber in three layers: a conductive outer layer, an insulating and a conductive inner layer.

The kit contains all mounting material.

Outer sheath is to be selected as below:

### SOJ CSS

Contains cold-shrink outer sheath and screw connectors for conductor and screen.

### SOJ CS

Contains cold-shrink outer sheath. Connectors are not included.

*For 16-35 mm<sup>2</sup> cables ADAPTER must be ordered separately, see following pages.*

*WIM 3 / WIM 4 – To be used as complement when jointing 3-core watertightened cable, see following pages.*



SOJ CSS

Cable cross section 12 kV    24 kV mm <sup>2</sup>	XLPE- diameter mm	Designation 1-core	CSS Weight kg/kit	CS Weight kg/kit	Designation 3-core	CSS Weight kg/kit	CS Weight kg/kit	
								50-70
95-150	–	18.5-24	<b>SOJ 122-1</b>	2.6	2.5	<b>SOJ 122-3</b>	5.5	5.2
185-240	–	23-28	<b>SOJ 123-1</b>	3.4	3.2	<b>SOJ 123-3</b>	7.0	6.2
300-400	–	27-34	<b>SOJ 124-1</b>	4.7	4.2	<b>SOJ 124-3</b>	–	7.3
500-630	–	33.5-46	<b>SOJ 125-1</b>	5.5	4.8	–	–	–
–	50-70	19-23.5	<b>SOJ 241-1</b>	3.3	3.2	<b>SOJ 241-3</b>	5.8	5.5
–	95-150	22.5-28	<b>SOJ 242-1</b>	3.6	3.5	<b>SOJ 242-3</b>	6.9	6.5
–	185-240	27-35	<b>SOJ 243-1</b>	4.3	4.0	<b>SOJ 243-3</b>	8.8	8.0
–	300	27-35	–	4.5	4.0	–	–	–
–	400	33.5-46	<b>SOJ 244-1</b>	5.3	4.8	–	–	–
–	500-630	33.5-46	–	5.5	4.8	–	–	–

### To be ordered separately

Accessories	Use	SOJ CSS	SOJ CS	See page
<b>ADAPTER</b>	Cables with different dimensions	–	X	43
<b>JSA 10-13</b>	Cables with copper tape screen	–	X	56
<b>JSA 14-16</b>	Cables with aluminium foil screen	–	X	56
<b>TS</b>	Additional kit for sector shaped 3-core cables	X	X	43
<b>SH-SKRM</b>	Screw connector	–	X	59
<b>STOP</b>	Crutch-seal for three 1-core cables	X	X	43

- Cold-applied
- No special tools
- Premoulded for easy and safe installation
- Active pressure
- Few components
- Long shelf life
- Reliable
- Joint bodies routine-tested

## Premoulded cable joint for radially watertightened cable SOJ 12-24 kV

### Use

Premoulded cable joint for XLPE-insulated 1- or 3-core cables with Al or Cu conductor and radially watertightened aluminium foil for 12-24 kV.

### Standards

- VDE 0278
- HD 629.1 S1
- IEEE 404 1993
- SS 424 14 45 edition 1
- KEMA S8

### Design

The joint body is made of rubber in three layers: a conductive outer layer, an insulating and a conductive inner layer.

The kit contains all mounting material.



SOJ CSWS



SOJ RWI



SOJ RWIT

There are different variations of the cable joints depending to the cable construction according to the following:

### SOJ CSWS

Used for jointing watertightened 1-core cable with copper wire screen. Contains cold-shrink cable sheath, Al foil tube and also connectors for conductor and screen.

### SOJ RWI

Used for jointing three 1-core cables, Prysmian type WISKI™ or similar. Contains copper braids to connect screens, Al foil tubes for radially watertightness and also outer sheath RULLE.

Connectors and items for jointing of separate earth wire are not included.

### SOJ RWIT

Used for jointing three 1-core cables Prysmian type WISKI™ or similar, to a standard 3-core cable. Contains copper braids to connect screens, STOP longitudinal watertightness and outer sheath RULLE.

Connectors and articles for jointing a separate earth wire are not included.

*For 16-35 mm<sup>2</sup> cables, ADAPTER must be ordered separately, see the table below!*

Cable cross section 12 kV      24 kV	XLPE- diameter mm	Designation 1-core	CSWS Weight kg/kit	Designation 3 x 1-core	RWI Weight kg/kit	RWIT Weight kg/kit	
							mm <sup>2</sup>
50-70	–	15-19,5	SOJ 121-1 50	3.0	SOJ 121-31	7.3	5.0
95-150	–	18,5-24	SOJ 122-1 95150	3.2	SOJ 122-31	7.9	5.5
185-240	–	23-28	SOJ 123-1 240	4.0	SOJ 123-31	10.3	7.0
300-400	–	27-34	SOJ 124-1 400	5.3	–	–	–
500-630	–	33,5-46	SOJ 125-1 630	6.1	–	–	–
–	50-70	19-23,5	SOJ 241-1 50	3.9	SOJ 241-31	10.0	5.5
–	95-150	22,5-28	SOJ 242-1 95150	4.2	SOJ 242-31	10.9	6.5
–	185-240	27-35	SOJ 243-1 240	4.9	SOJ 243-31	13.0	8.0
–	300-400	33,5-46	SOJ 244-1 400	5.9	–	–	–
–	500-630	33,5-46	SOJ 244-1 630	6.1	–	–	–

Accessories	Use	SOJ CSWS	SOJ RWI	SOJ RWIT	See page
Adapter	Adapter kit for cables with different dimensions	X	X	X	43
TS	Additional kit for sector shaped cables			X	43
SH-SKRM	Screw connector		X	X	59

## Premoulded cable joint with or without outer sheath, RULLE SOJ 12-24 kV

- Cold-applied
- No special tools
- Premoulded for easy and safe installation
- Active pressure
- Few components
- Long shelf life
- Reliable
- Joint bodies routine-tested

### Use

Premoulded cable joint for XLPE-insulated 1- or 3-core cables with Al or Cu conductor for 12-24 kV.

### Standards

- HD 629.1 S1
- SS 424 14 45 edition1
- VDE 0278
- KEMA S8
- IEEE 404 1993

### Design

The joint body is made of rubber in three layers: a conductive outer layer, an insulating and a conductive inner layer.

The kit contains all mounting material.



SOJ R

### Outer sheath is to be selected as below:

#### SOJ R

Contains outer sheath RULLE, a two-layer tape of EPDM-rubber and mastic, which is wrapped around the joint.

Connectors are not included.

#### SOJ SL

Supplied without outer sheath. NB! An outer sheath approved by us must be added, for example type ARM.

Connectors are not included.

*For 16-35 mm<sup>2</sup> cables ADAPTER must be ordered separately, see the table below!*

*WIM 3 / WIM 4 – To be used as complement when jointing 3-core watertightened cable, see the table below.*

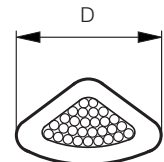
Cable cross section 12 kV 24 kV mm <sup>2</sup>	XLPE- diameter mm	Designation R		Designation SL		Designation R		Designation SL		
		1-core	Weight kg/kit		Weight kg/kit	3-core	Weight kg/kit		Weight kg/kit	
50-70	–	15-19.5	SOJ 121-1	2.6	SOJ 121-1 SL	1.0	SOJ 121-3	4.7	SOJ 121-3 SL	2.0
95-150	–	18.5-24	SOJ 122-1	3.0	SOJ 122-1 SL	1.1	SOJ 122-3	5.6	SOJ 122-3 SL	2.3
185-240	–	23-28	SOJ 123-1	3.1	SOJ 123-1 SL	1.2	SOJ 123-3	6.4	SOJ 123-3 SL	2.7
300-400	–	27-34	SOJ 124-1	4.3	SOJ 124-1 SL	1.6	SOJ 124-3	8.9	SOJ 124-3 SL	4.2
500-630	–	33.5-46	SOJ 125-1	5.9	SOJ 125-1 SL	2.2	–	–	–	–
–	50-70	19-23.5	SOJ 241-1	3.2	SOJ 241-1 SL	1.3	SOJ 241-3	6.2	SOJ 241-3 SL	2.8
–	95-150	22.5-28	SOJ 242-1	3.9	SOJ 242-1 SL	1.5	SOJ 242-3	7.0	SOJ 242-3 SL	3.4
–	185-300	27-35	SOJ 243-1	4.5	SOJ 243-1 SL	1.8	SOJ 243-3	9.1	SOJ 243-3 SL	4.5
–	400-630	33.5-46	SOJ 244-1	6.4	SOJ 244-1 SL	2.2	–	–	–	–

Accessories	Use	SOJ R	SOJ SL	See page
<b>Adapter</b>	Cables with different dimensions	X	X	43
<b>JSA 10-13</b>	Cables with copper tape screen	X	X	56
<b>JSA 14-16</b>	Cables with aluminium foil screen	X	X	56
<b>TS</b>	Additional kit for sector shaped 3-core cables	X	X	43
<b>WIM</b>	Diffusion seal	X	X	44
<b>ARM</b>	Armouring kit	–	X	57
<b>STOP</b>	Branch seal for three 1-core cables	X	–	43
<b>SH-SKRM</b>	Screw connector	X	X	59

## Accessories for SOJ

### Additional kit TS

Additional kit for sector shaped 3-core cables, for use when the D-dimension over the insulation is above the value as below.



Designation	Fitting joint	D mm	Weight kg/item
TS 121	SOJ 121-3	20	0.1
TS 242	SOJ 242-3	29	0.1
TS 243	SOJ 243-3	39	0.1

### Adapter kit, ADAPTER

Adapter for cables from 10 mm<sup>2</sup> and for jointing cables with a smaller cross section. Manufactured and tested to cope with one step down to the nearest joint size (each kit contains one adapter).



Designation	Fitting joint	Minimum conductor cross section mm <sup>2</sup>	XLPE diameter mm	Weight kg/item
ADAPTER 1*	SOJ 121, 241	10	Minimum 10	0.1
ADAPTER 2	SOJ 122	50	15.0-19.5	0.1
ADAPTER 3	SOJ 123	95	18.5-24.0	0.1
	SOJ 242	50	19.0-23.5	0.1
ADAPTER 4	SOJ 124	185	23.0-28.0	0.1
	SOJ 243	95	22.5-28.0	0.1
ADAPTER 5	SOJ 125	300	27.0-34.0	0.1
	SOJ 244	185	27.0-35.0	0.1
ADAPTER 6	SOJ 125	185	23.0-28.0	0.1
	SOJ 244	95	22.5-28.0	0.1

\* Minimum diameter over connector is 12 mm.

### Crutch seal, STOP

For sealing when three 1-core cables are jointed to a 3-core cable.



Designation	Voltage kV	Suitable for 1-core cables with conductor cross section in mm <sup>2</sup>	Weight kg/item
STOP 1	12	50-185	0.2
	24	50-95	0.2
STOP 2	12	> 240	0.2
	24	> 120	0.2

## Accessories for SOJ



WIM 3



WIM 4

### Diffusion seal, WIM

Used as complement to SOJ CS, SOJ CSS or SOJ R when jointing 3-core watertightened cables with diffusion barrier of aluminium.

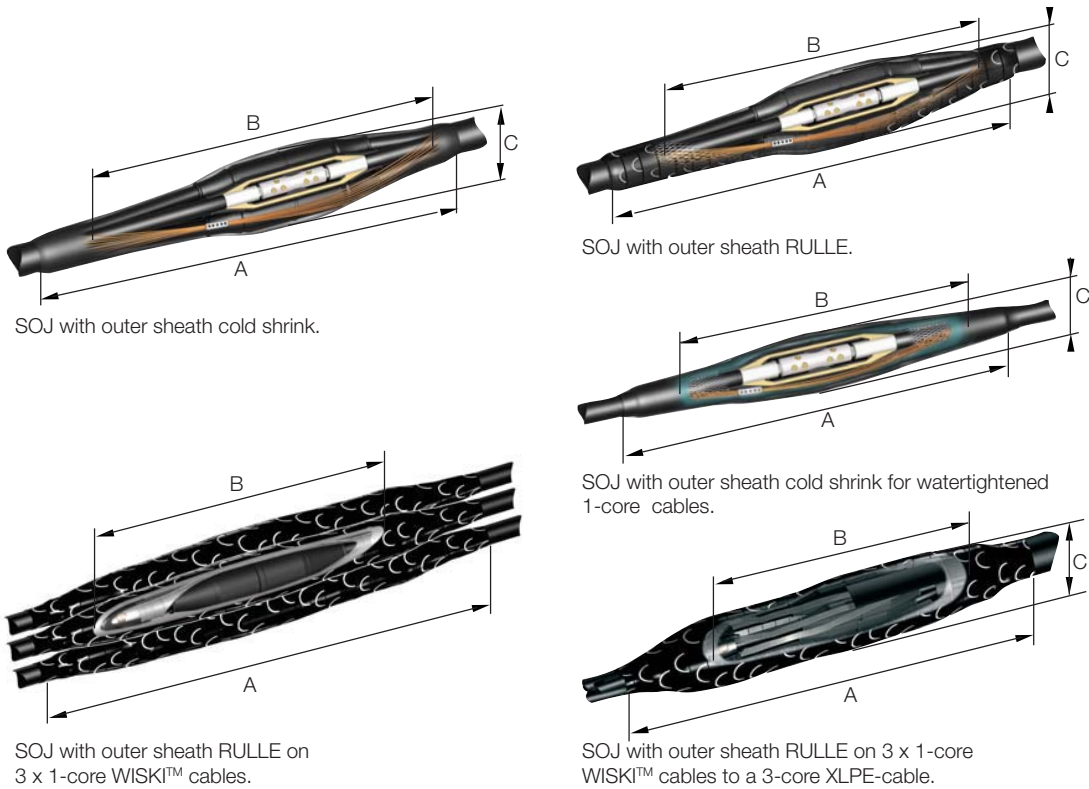
Designation	Fitting joint	Type of cable	Weight kg/kit
WIM 3	SOJ 121-3, 122-3, 123-3, SOJ 241-3, 242-3, 243-3	3-core with Al foil in direct contact with screen	0.5
WIM 4	SOJ 121-3, SOJ 122-3	3-core with inner cable sheath between Al foil and screen	4.0
WIM 5	SOJ 121-1, SOJ 122-1	1-core with Al-foil in direct contact with screen	0,4
WIM 6	SOJ 123-1, SOJ 124-1, SOJ 125-1, SOJ 241-1, SOJ 242-1, SOJ 243-1, SOJ 244-1	1-core with Al-foil in direct contact with screen	0,4

### To be ordered separately

Accessories	Type of jointing / cable type	CSS	CS	R	SL	RWI	RWIT	See page
TS	Additional kit for sector shaped 3-core cables	X	X	X	X		X	43
Adapter	Cables with different dimensions	X	X	X	X	X	X	43
STOP	3 x 1-core to a 3-core			X				43
WIM	Radial watertightness cable	X	X	X				44
JSA 10-13	Cable with copper tape screen	X	X	X				56
JSA 14-16	Cable with aluminium foil screen only	X	X	X				56
ARM	Armoured cable or when extra mechanical protection is required				X			57
SH-SKRM	Screw connector	X	X	X	X	X		59

## Dimensional drawings, SOJ

All dimensions in mm



SOJ with outer sheath RULLE on 3 x 1-core WISKI™ cables.

SOJ with outer sheath RULLE on 3 x 1-core WISKI™ cables to a 3-core XLPE-cable.

Designation	Dimensions		
	A*	B* mm	C*
1-core			
SOJ 121-1	980-1060	770-860	60
SOJ 122-1	980-1100	770-900	65
SOJ 123-1	1050-1220	940-960	75
SOJ 124-1	1050-1370	940-1080	75
SOJ 125-1	1050-1400	940-1200	90
SOJ 241-1	1050-1220	900-940	75
SOJ 242-1	1050-1220	900-940	80
SOJ 243-1	1050-1370	940-1080	85
SOJ 244-1	1050-1400	940-1200	90
3-core			
SOJ 121-3	1200-1350	1000	120
SOJ 122-3	1350	1150	125
SOJ 123-3	1390-1500	1190	140
SOJ 124-3	1500	1310	165
SOJ 241-3	1350	1140	145
SOJ 242-3	1320-1390	1190	160
SOJ 243-3	1500	1310	180

\* Estimated dimensions depending on installation and type of outer sheath.

- The range can be used for different screen types

## Screen connection for cable joints, JSA 10-16

Screen connection kits for XLPE-insulated cables with earth screen of copper tape or aluminium foil. The kits are designed for Kabeldon cable joints type SOJ and SMXB. There is enough material in the kits for one 3-core joint or three 1-core joints.

There are also complete kits for 3-core cables with Cu-tape screen.

### Cables with copper tape screen

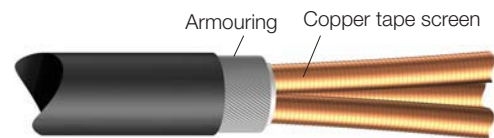
JSA 10-13 contains copper stockings which are connected to the screen with constant force springs. Connections to armouring (if any) are made with lashing wire.

### Cables with aluminium foil screen

JSA 14-16 contains copper braids which are connected to the screen with a plate and constant force springs.

*If the cable has only copper wire screen, no earthing kit is needed.*

*For cables with other screen types, or 3-core cables with Cu-tape screen, contact us for information.*



Cable	For cables with copper tape screen				For cables with aluminium foil screen		
	17 – 20	19 – 27	25 – 35	31 – 48	19 – 27	25 – 35	31 – 48
Earthing kit for 1-core	<b>JSA 10-1</b>	<b>JSA 11-1</b>	<b>JSA 12-1</b>	<b>JSA 13-1</b>	<b>JSA 14-1</b>	<b>JSA 15-1</b>	<b>JSA 16-1</b>
Earthing kit for 3-core	<b>JSA 10-3</b>	<b>JSA 11-3</b>	<b>JSA 12-3</b>	<b>JSA 13-3</b>	<b>JSA 14-3</b>	<b>JSA 15-3</b>	<b>JSA 16-3</b>
<b>Cable joint</b>							
<b>SOJ 121</b>	X						
<b>SOJ 122</b>		X			X		
<b>SOJ 123</b>			X			X	
<b>SOJ 124</b>			X			X	
<b>SOJ 125</b>				X			X
<b>SOJ 241</b>		X			X		
<b>SOJ 242</b>		X			X		
<b>SOJ 243</b>			X			X	
<b>SOJ 244</b>				X			X
<b>SMXB 1</b>	X						
<b>SMXB 2</b>		X			X		
<b>SMXB 3</b>			X			X	
<b>SMXB 4</b>		X			X		
<b>SMXB 5</b>		X			X		
<b>SMXB 6</b>			X			X	
<b>SMXB 7</b>				X			X
<b>SMXB 8</b>				X			X
<b>SMXB 9</b>				X			X
<b>SMXB 10</b>			X			X	
<b>SMXB 11</b>				X			X

# Armouring kit ARM

### Use

For restoring a steel wire or steel tape armoured cable. ARM can be used with SOJ and SMXB joints, as well as other joints.



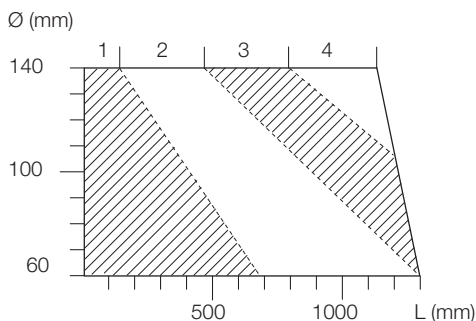
### Design

The kit consists of plastic mesh, spiral, funnel with holder, transparent tape and cast resin.

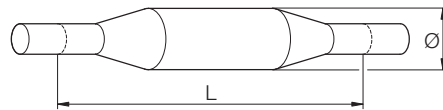
The mesh and spiral are placed over the joint and sealed with the tape. The cast resin, which contains a base and hardener in a partitioned bag, is mixed and poured into the funnel until the mesh is full.

The maximum storage temperature for the cast resin is 30 °C.

**Selecting ARM for unknown application requires the length of joint "L" and diameter over joint "Ø" as below.**



### ARM kit size



E.g. Ø 115 and L 850 mm give ARM 3.

**Kabeldon cable joints type SOJ and SMXB are to be completed with ARM as following:**

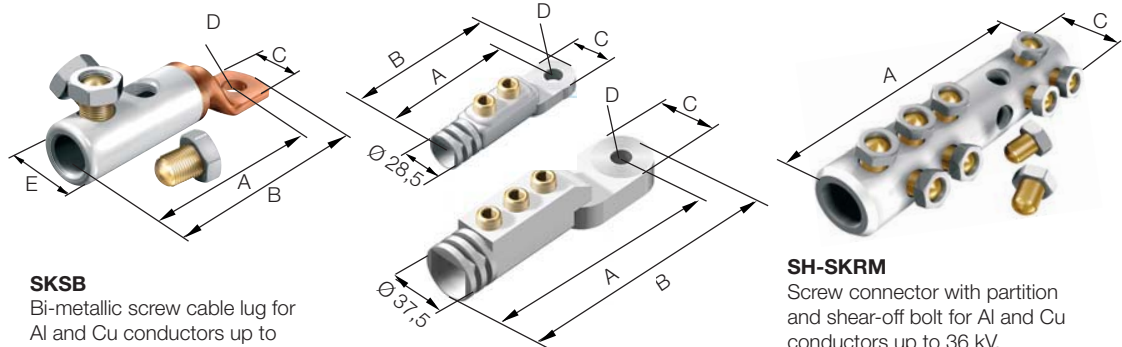
Cable joint	ARM 1	ARM 2	ARM 3
SOJ 121-3	X		
SOJ 122-3		X	
SOJ 123-3		X	
SOJ 124-3			X
SOJ 241-3	X		
SOJ 242-3		X	
SOJ 243-3		X	
SMXB 1-3	X		
SMXB 2-3		X	
SMXB 3-3		X	
SMXB 4-3	X		
SMXB 5-3		X	
SMXB 6-3			X
SMXB 7-3			X
SMXB 8-3			X

Designation	Weight kg/item
<b>ARM 1</b>	3.5
<b>ARM 2</b>	6.5
<b>ARM 3</b>	8.0
<b>ARM 4</b>	10.0

- No special tools

## Connectors

All dimensions in mm



### SKSB

Bi-metallic screw cable lug for Al and Cu conductors up to 36 kV.

- Meets the requirements of: IEC 61238-1
- The cable lug is equipped with a turnable two-sided shear-off bolt and a specially designed nut.  
The bolt is rotated in the appropriate direction, and the nut is then assembled. When the specified torque is reached, the bolt will shear-off and the installation is completed.
- Single core kits.

### SKSA 95-13, 300-13

Screw cable lug for indoor and outdoor connection of Al or Cu conductors. Can be connected to an Al or Cu busbar.

A greased cupal washer must be used when connecting to a Cu conductor outdoors.

- Meets the requirements of: IEC 61238-1
- Single core kits.



### CW 3013, CW 3817

Cupal washer, to be used when connecting an aluminium cable lug to a copper busbar outdoors. The washers are coated with contact grease.

- Supplied in bags of three.

### SH-SKRM

Screw connector with partition and shear-off bolt for Al and Cu conductors up to 36 kV.

- Meets the requirements of: IEC 61238-1.
- The connector is equipped with a turnable two-sided shear-off bolts and a specially designed nut. The bolt is rotated in the appropriate direction, and the nut is then assembled. When the specified torque is reached, the bolt will shear off and the installation is completed.
- Single core kits.

Designation	Conductor Al or Cu			Tightening torque	Dimensions					Weight kg/item
	sector shaped mm <sup>2</sup>	Round mm <sup>2</sup>	max Ø mm		A	B	C	D(Ø)	E(Ø)	
<b>SKSB 70-12</b>	25-70	16-70	11	15*	90	103	25	13	21.5	0.15
<b>SKSB 150-12</b>	95	95-150	16	20*	103	118	30	13	27	0.25
<b>SKSB 240-12</b>	120-185	185-240	20	30*	125	140	30	13	33.5	0.40
<b>SKSB 400-16</b>	240	300-400	25.5	40*	166	185	37	17	41.5	0.75
<b>SKSB 630-16</b>	–	500-630	33	45*	201	227	55	17	49	1.45
<b>SKSA 95-13</b>	–	25-95	11.6	25*	88	103	30	13	–	0.10
<b>SKSA 300-13</b>	–	50-300	20.6	25**/45***	140	160	40	13	–	0.30
<b>SH-SKRM 70</b>	25-70	16-70	11	15*	100	–	21.5	–	–	0.25
<b>SH-SKRM 150</b>	95	95-150	16	20*	114	–	27	–	–	0.35
<b>SH-SKRM 240</b>	120-185	185-240	20	30*	144	–	33.5	–	–	0.60
<b>SH-SKRM 400</b>	240	300-400	25.5	40*	175	–	41.5	–	–	0.90
<b>SH-SKRM 630</b>	–	500-630	33	45*	210	–	49	–	–	1.20

Designation	Outer diameter mm	Hole diameter mm	Thickness mm	Weight g/item
<b>CW 3013</b>	30	13	2	5
<b>CW 3817</b>	38	17	2	8

\* The bolt will be sheared-off at the right tightening torque.

\*\* When 50-95 mm<sup>2</sup>.

\*\* When 120-300 mm<sup>2</sup>.

## Other accessories



**IK 1105, 1106, 1107,  
1108, 1109**  
Abrasive cloth.



**IK 1405, IK 1406**  
Lashing wire (tin-coated copper wire).



**IK 1401, IK 1407**  
Lashing wire (tin-coated copper wire).



**IK 1502**  
Lashing wire (galvanized steel wire).



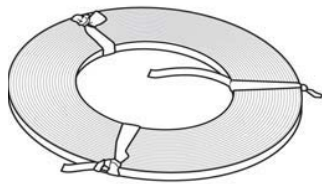
**IK 2221**  
Silicone grease, 25 g.



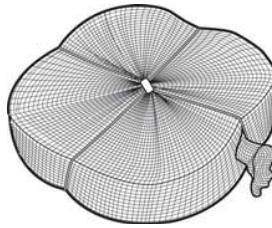
**IK 2233**  
Grease, type AP paste, 10 g.

Designation	Length m	Diameter mm	Coarseness	Weight kg/item
IK 1105	1	–	100	0.1
IK 1106	1	–	80	0.1
IK 1107	1	–	120	0.1
IK 1108	1	–	220	0.1
IK 1109	1	–	400	0.1
IK 1401	2	1.4	–	0.1
IK 1405	5	1.4	–	0.1
IK 1406	9.5	1.4	–	0.2
IK 1407	6	1.0	–	0.2
IK 1502	4	1.5	–	0.1
IK 2221	–	–	–	0.03
IK 2233	–	–	–	0.02

## Other accessories



**IA 1701**  
Earthing braid, sold by the metre, 10 mm<sup>2</sup>.



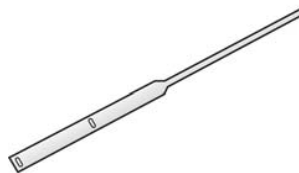
**IA 1706**  
Copper net for e.g. SMXB, sold by the metre, approx. 10 mm<sup>2</sup>.



**IA 1710**  
Earthing braid with lining, 22 mm<sup>2</sup>.



**IK 2230**  
Washing cloth, 3 alcohol-soaked paper cloths 200 x 300 mm.



**MBR 250**  
Stainless marking tape, 100 units/kit.



**SKALUS**  
Peeling string for XLPE-insulation.

Designation	Length m	Width mm	Thickness mm	Weight
<b>IA 1701</b>	–	16	1.0	0.10 kg/m
<b>IA 1706</b>	–	80	1.0	0.06 kg/m
<b>IA 1710</b>	0.4	27	0.1	0.09 kg/unit
<b>IK 2230</b>	–	–	–	0.03 kg/unit
<b>MBR 250</b>	0.25	–	1.0	0.50 kg/kit
<b>SKALUS</b>	2	–	1.0	0.02 kg/unit

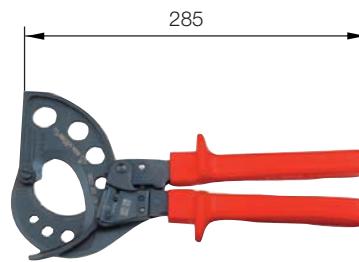
## Tools



### 730 R

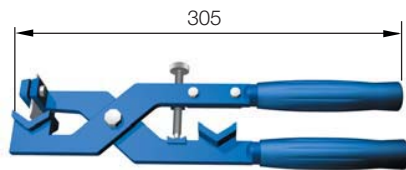
Torque wrench for screw connectors, screw cable lugs, overhead line clamps, etc. Supplied with 7 mm socket head, extension and 8 mm internal hexagon head.

Torque range 6-50 Nm.



### Intercable No. RKS 1607 054

Cable shears for cutting cable  
Ø max 54 mm.



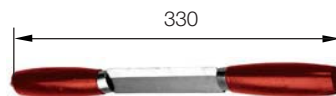
### RKM 1055

Splitting tool for longitudinal splitting off XLPE-insulation with Ø 10-55 mm.



### RKM 670

Cable knife, 30 mm blade.



### RKM 672

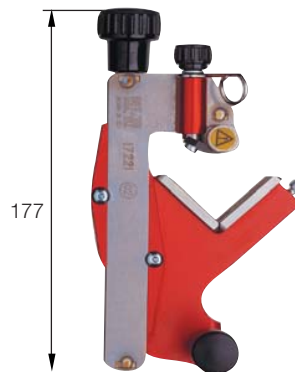
Sheath removing knife with two handles for plastic sheathed cable.

Designation	Description
730 R	Torque wrench
RKS 1607 054	Cable shears
RKM 1055	Peeling tool
RKM 1055 K	Spare blade for RKM 1055
RKM 670	Cable knife
RKM 672	Sheath removing knife

## Tools



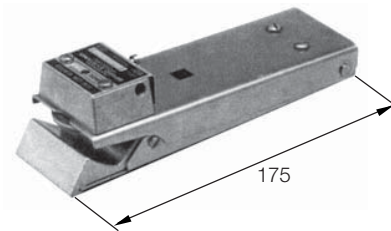
**Intercable No. AV 6220**  
Sheath removing tool for  
PE-sheathed cable  $\varnothing > 20$  mm.



**Intercable No. FBS 1722 1**  
Stripping tool for the vulcanized, outer  
conducting layer of XLPE-insulated  
cable  $\varnothing 10-52$  mm.  
The tool is supplied in a rigid case  
with a tube of silicone grease.



**GB-M20**  
Cutting tool for cable sheath  
and XLPE-insulation:  
Diameter:  $\varnothing 15-50$  mm  
Cutting depth:  $\leq 8$  mm



**Model 1700 Series**  
Peeling tool for strippable outer  
conductive layer on XLPE-insulated  
cable  $\varnothing 13-51$  mm.

Designation	Description
<b>AV 6220</b>	Sheath removing tool
<b>FBS-1722 1</b>	Stripping tool
<b>GB-M20</b>	XLPE stripping tool
<b>Model 1700 Series</b>	Peeling tool