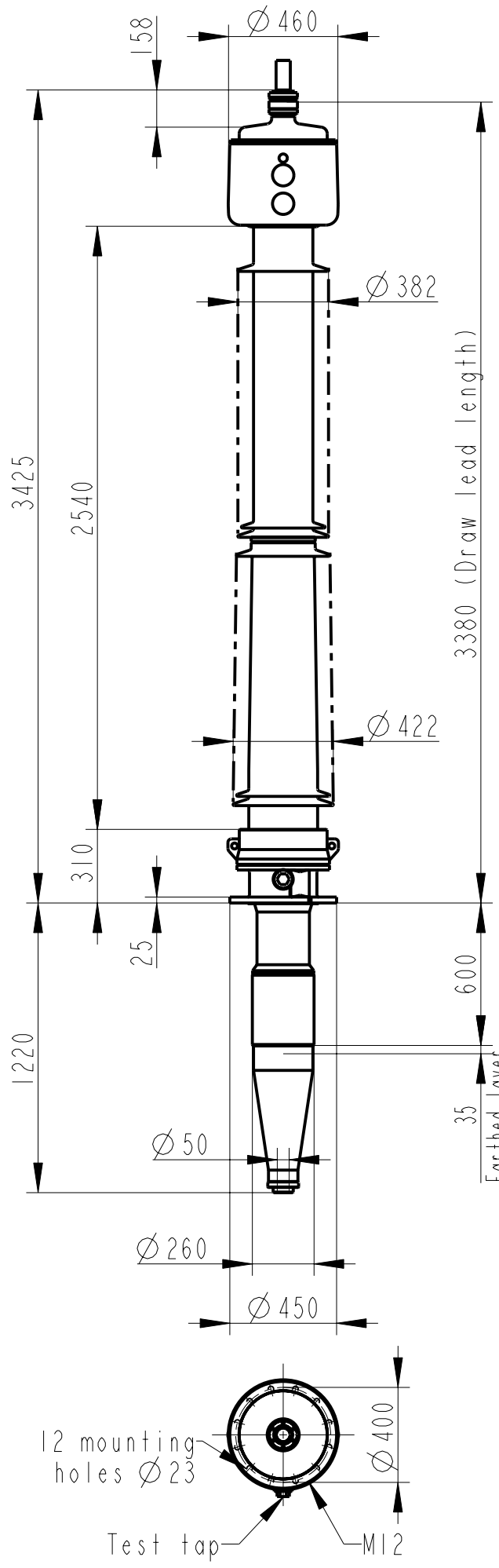


Rev Ind	Revision	Appd	Date
2	Updated	MG	05 08



Bushing Data:

Rated Voltage	362 kV
Phase to-earth Voltage	220 kV
Dry Lightning Impulse 1,2/50µs	1175 kV
Wet Switching Impulse	850 kV
Wet Power frequency AC	560 kV
Routine test Imin dry 50Hz	560 kV
Rated Current	1600 A
Creepage Distance Nominal	9150 mm
Creepage Distance Minimum	8750 mm
Mass	580 kg

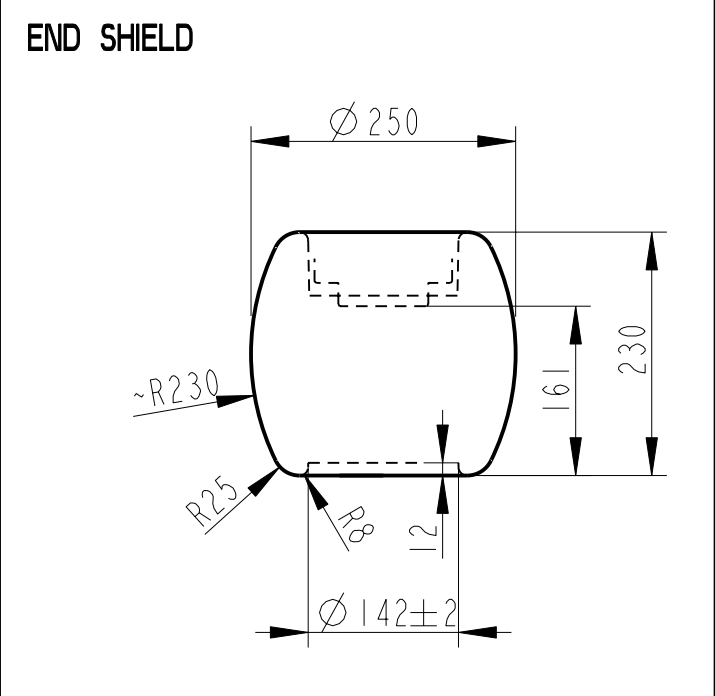
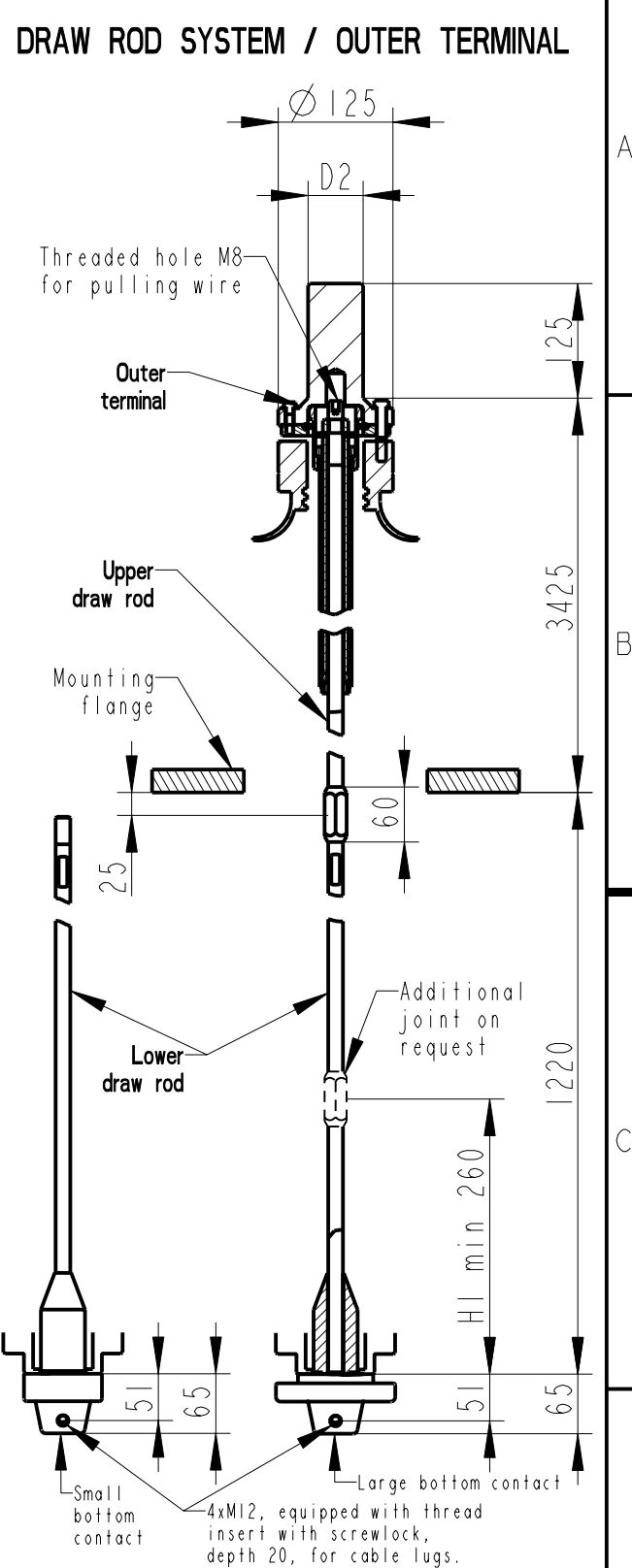
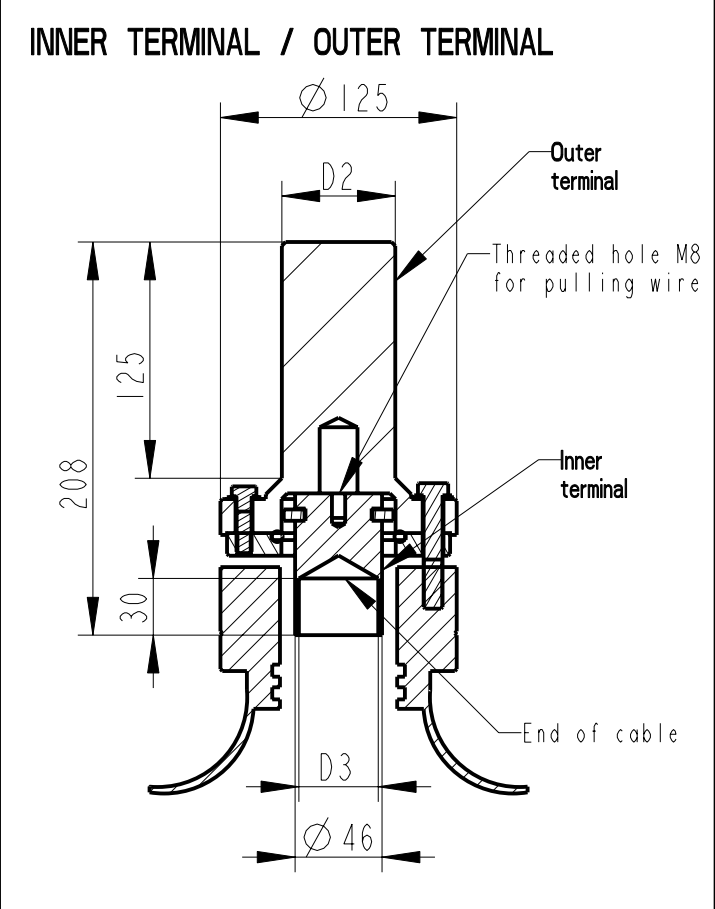
Ordering Data:

BUSHING	LF121 560 -A / -AA	COLOUR AIR INSULATOR	Brown / Light Grey
DRAW ROD SYSTEM	LF170 097 LF170 098	UPPER DRAW ROD LOWER DRAW ROD	
OUTER TERMINAL		Material	D2 (mm)
LF170 090-A		Al	Ø 30
LF170 090-B		Al	Ø 60
LF170 090-C		Cu	Ø 30
LF170 090-D		Cu	Ø 40
LF170 090-E		Cu	Ø 60
INNER TERMINAL		D3 (mm)	Cond.area (mm ²)
LF170 091-A		Undrilled with pilot hole Ø 5	
LF170 091-B		Ø 15	up to 95
LF170 091-C		Ø 30	up to 285
LF170 091-D		Ø 42	up to 740
END-SHIELD			
LF170 092-A		Epoxy insulated	
LF170 092-C		Insulated with 3mm pressboard	

ABB Ludvika, Sweden

Um/Uy	No.				
LI	kV SI	kV AC	A	50/60 Hz	
M	kg L	mm	▷		
C1	pF Tanδ				
C2	pF Tanδ				

Signatures acc. to revision 2 are valid
Signaturer enligt revision 2 gäller



Based on	Reg. No.	Title	Language EN
Prepared ***	Responsible department ***	GOE(2)-1175-850-1600-0.6	
Approved ***	Take over department		Page 1(1)
Design engineering review M Gullo 05 08	Database	Document No.	2751400-5

We reserve all rights in this document and in the information contained therein. Reproduction, use or disclosure to third parties without express authority is strictly forbidden. © ABB