

Order Data Sheet				Customer Job Number
Type DTU, De-energized Tap Changer				Date
ABB Order No.	Quantity	Customer PO No.	Transformer Manufacturer	Final Customer

This ordering information is used to specify the style of the type DTU de-energized tap changer. The identifying ordering number is created on this page. Please fill in the corresponding numbers and letters according to the transformer/tap changer requirements.

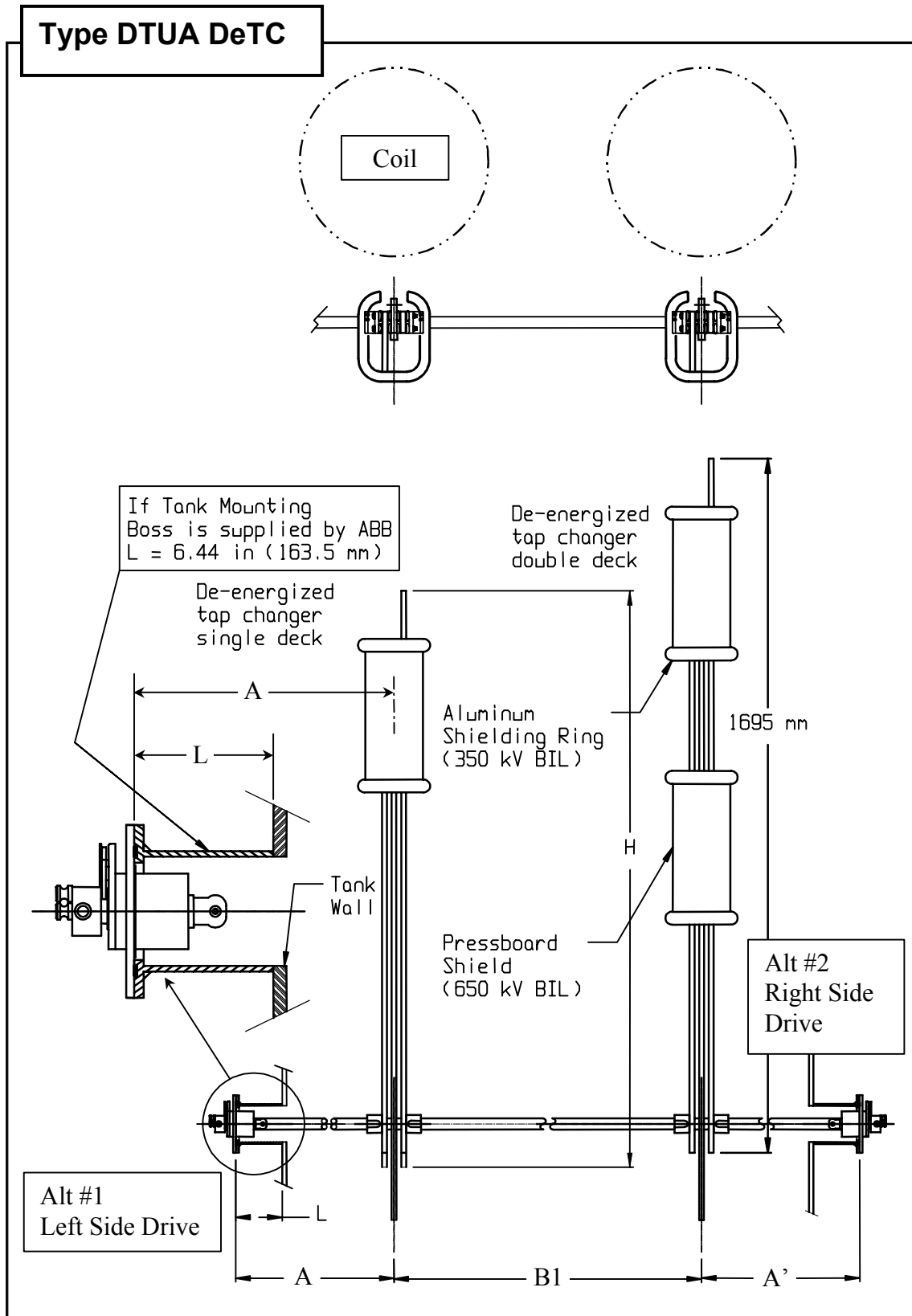
Note: The standard number of operating positions is 5. If more or less are required, please contact your ABB representative.

DTU

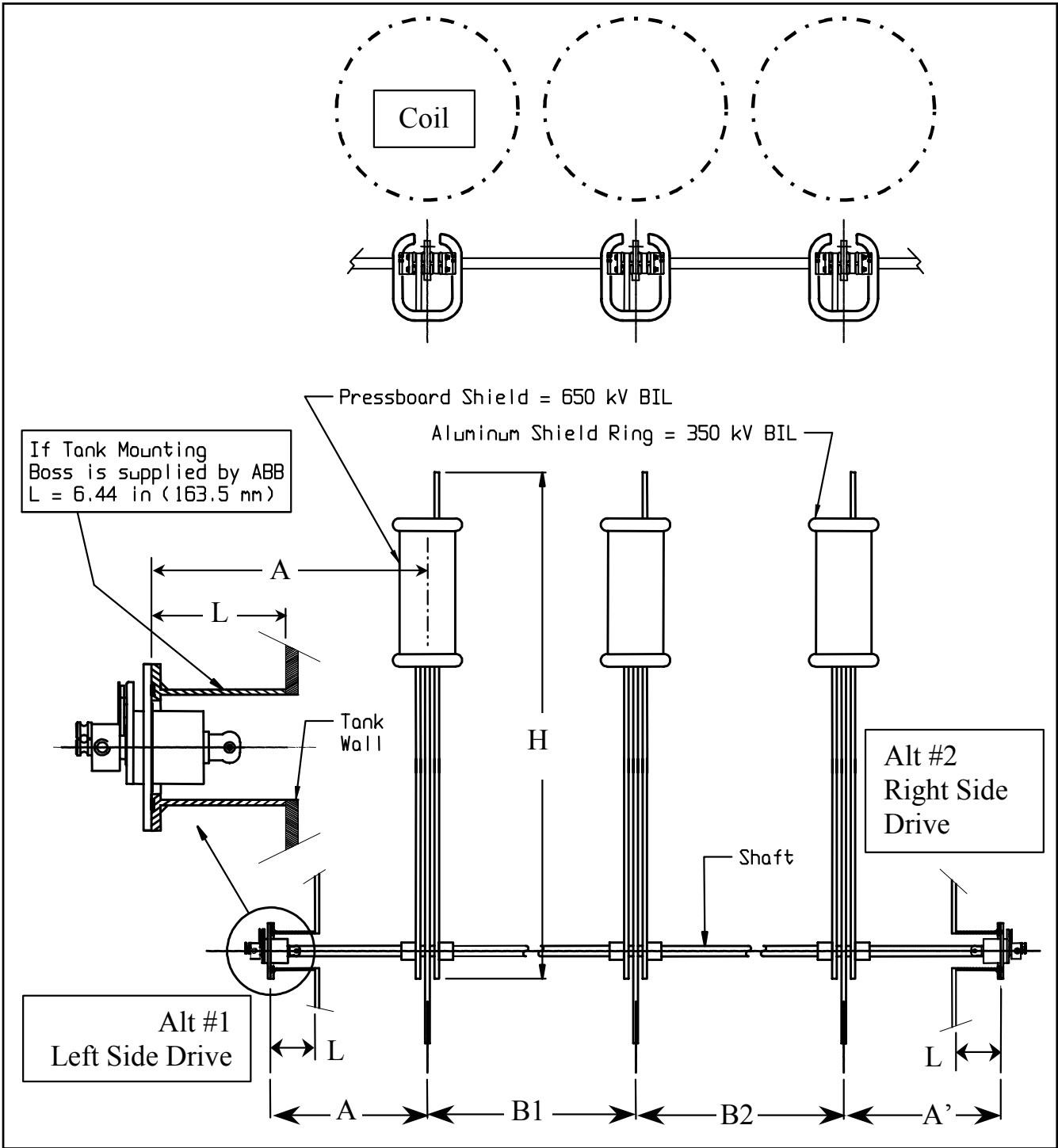
A	1	- dimension H (1) 1080 mm, SINGLE DECK and (1) 1695 DOUBLE DECK or						
A	2	- dimension H (1) 1460 mm, SINGLE DECK and (1) 1695 DOUBLE DECK						
B	1	- dimension H (3) 1080 mm, SINGLE DECKS or						
B	2	- dimension H (3) 1460 mm, SINGLE DECKS						
C	1	- (3) 1695 mm, DOUBLE DECKS						
		2	5	-Less than or equal to 250 kV BIL				
		3	5	-Less than or equal to 350 kV BIL (end shield rings)				
		6	5	-Less than or equal to 650 kV BIL (end shield rings + barrier)				
				L	Left Side, Hand Operator			
				R	Right Side, Hand Operator			
			1	1	LL114-003-A, Lugs (11 mm Cable Hole Diameter)			
			1	3	LL114-003-B, Lugs (13 mm Cable Hole Diameter)			
			1	5	LL114-003-C, Lugs (15 mm Cable Hole Diameter)			
			1	7	LL114-003-D, Lugs (17 mm Cable Hole Diameter)			
			1	9	LL114-003-E, Lugs (19 mm Cable Hole Diameter)			
			2	1	LL114-003-F, Lugs (21 mm Cable Hole Diameter)			

Example: Style DTUB265L15 = (3) 1460 mm single decks for 650 kV BIL application with left side, clockwise hand operator, 5-positions with cable lug number LL114-003-C

Optional Mounting Boss: No () Yes ()	Required Steel Shafts (select unit of length)	
	A = _____ mm or in	Hand operator to first phase
The standard mounting boss is 6.50 inches (165 mm) from the outside surface of the transformer tank to the flange surface of the mounting boss. If special length is required, please specify: _____ mm or inch	B1 = _____ mm or in	First phase to second phase
	B2 = _____ mm or in	Second phase to third phase (only required for DTUB1, B2 and C1)



Type DTUB DeTC



Type DTUC DeTC

