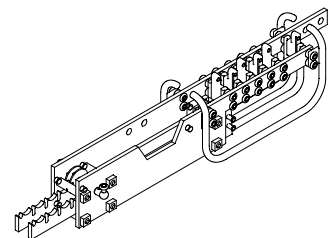


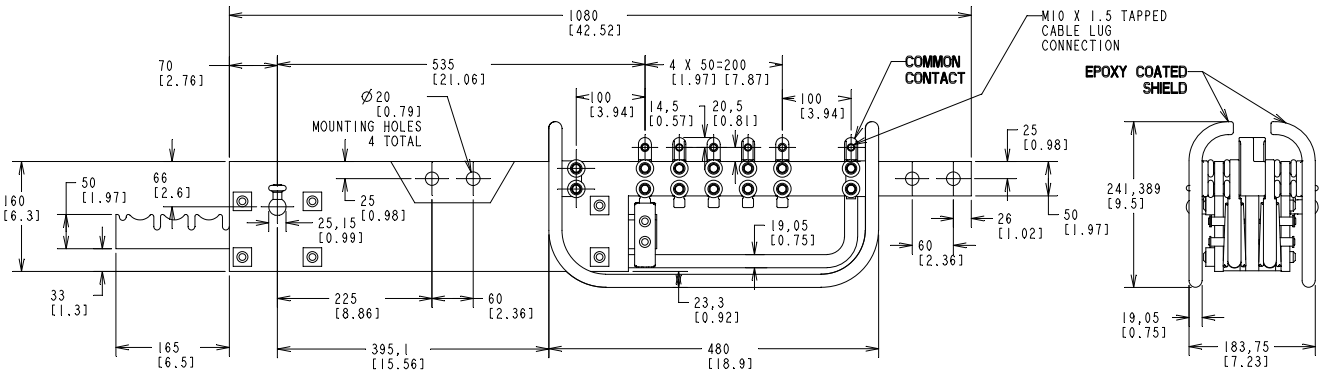
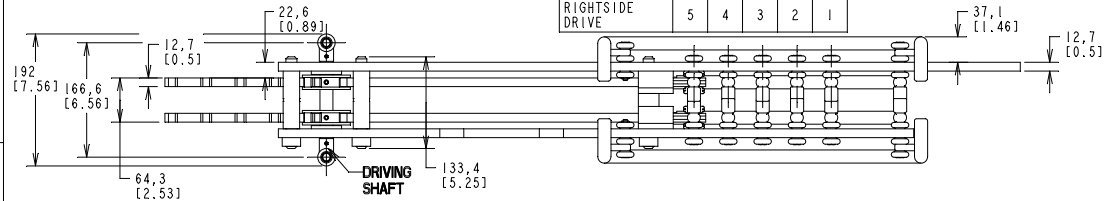
WE RECEIVE ALL RIGHTS IN THIS DRAWING AND IN THE INFORMATION CONTAINED THEREIN. REPRODUCTION, IN ANY MANNER, WITHOUT EXPRESS AUTHORITY OF ABB, IS STRICTLY FORBIDDEN. © ABB

**GENERAL INFORMATION**

5 POSITION LINEAR TAP CHANGER WITH SHIELDS  
 RATING 1000AMP, 650BIL  
 APPROX. WT. = 15.8KG. 35.0LBS.



TERMINAL NUMBERS	
	TAP POSITION
LEFTSIDE DRIVE	1 2 3 4 5
RIGHTSIDE DRIVE	5 4 3 2 1



**THIS TAP CHANGER IS USED WITH INSULATING SHAFTS**

ENG. REF. SEE IZUA549204-AAS FOR TAP CHANGER WITHOUT SHIELDS.

NO. / Loc.	REVISIONS
1	NEW ISSUE PERKINS 09/26/03
2	DIM. 66 WAS 183.3. DIM. 65 WAS 183.3. PERKINS 10/06/03
3	ADDED TERMINAL NUMBERS CHART. PERKINS 10/17/03
4	TOP VIEW USE WAS 186.6 WAS 155.6. 37.1 WAS 38.1. RIGHT VIEW 183.75 WAS 185.75. PERKINS 03/07/04. SAP 03/07/04
5	ADDED LEADING ZERO TO DECIMAL DIMENSIONS PERKINS 03/16/04. SAP 03/16/04

PRINTS TO:			ABB Inc. ALAMO, TN U.S.A.	
1	7	13	TITLE: "DTL" 1000 AMP OUTLINE	
2	8	14	RESP. DEPT.: COMPONENTS	
3	9	15	DFTR: PERKINS 09-Sep-03 UNITS = MM/INCHES	
4	10	16	SCALE = 0.250	DRAWING NO: IZUA549204-AAR
5	11	17	LANG. = ENGLISH	REV.: 5
6	12	18	APPD:	SHEET 1 OF 1

