

## PRODUCT INFORMATION

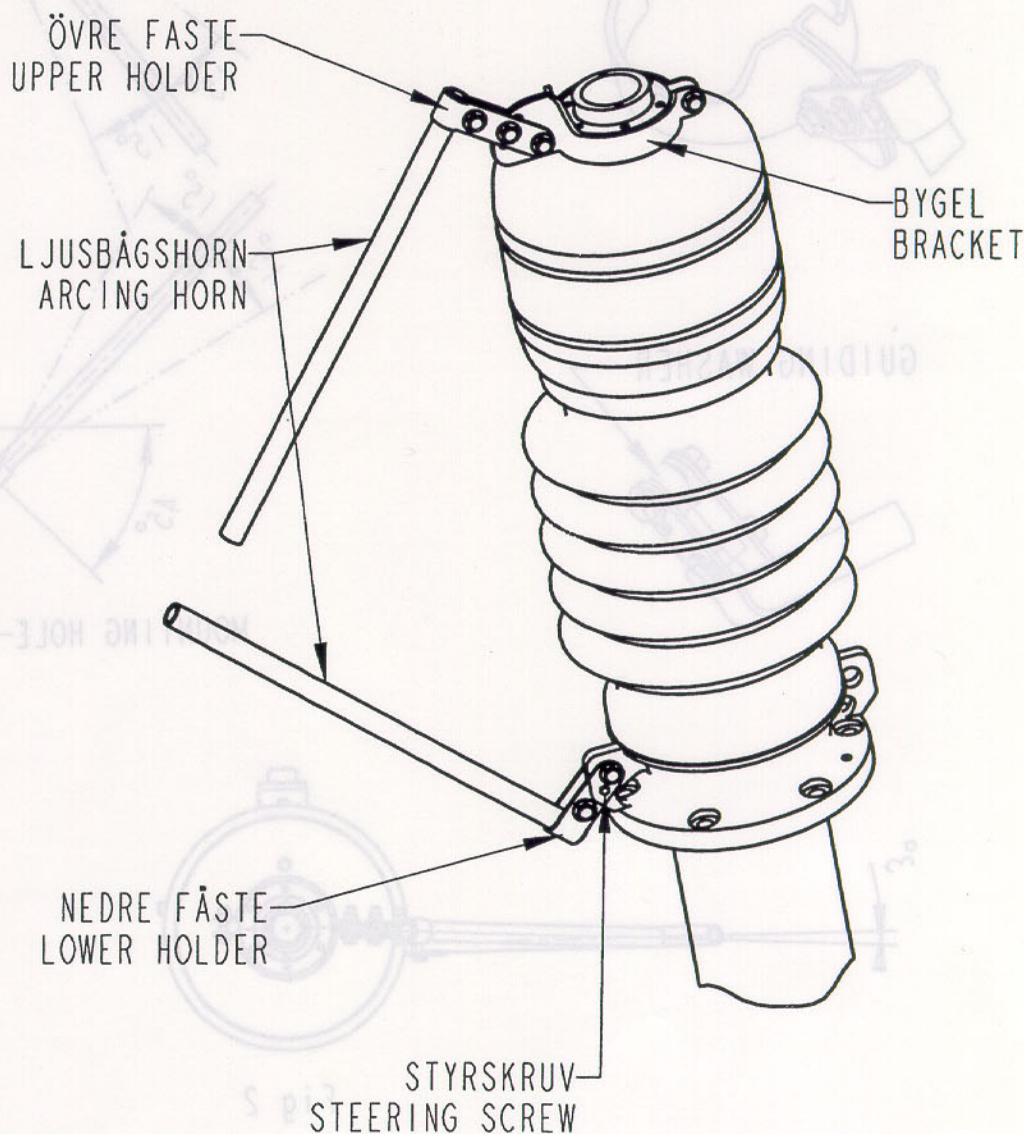
### ROD GAPS FOR BUSHINGS TYPE GOE

#### General

Surge arresters are firmly recommended by ABB for over-voltage protection. All GOE 250-1300 can, however be furnished with rod gaps upon request. This information describes the design, adjustment and mounting of gaps for GOE bushings.

#### Design

To protect the bushing from flashovers, **Arcing horns** can be used. These contain of a **Bracket** screwed together with a holder at the top nut. The **Upper arcing horn** is fixed in the **Upper holder**. The **Lower holder** is bolted to the flange and positioned by a steering screw. The **Lower arcing horn** is fixed in the holder.

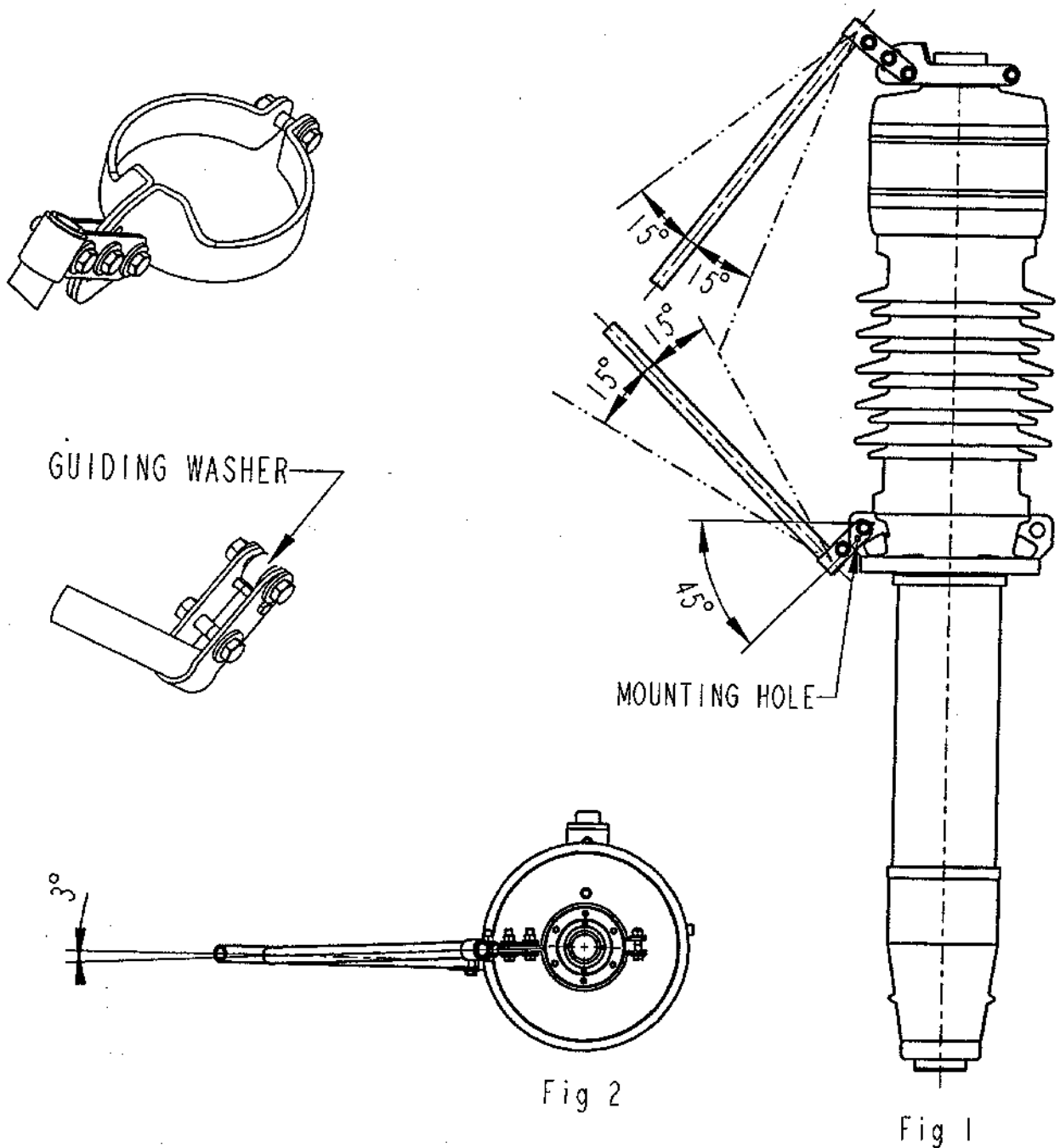


This document must not be copied without our written permission, and the contents thereof must not be imparted to a third party nor be used for any unauthorized purpose. Contravention will be prosecuted. ABB Components AB

6917 0500 - LAC - Alméns tr. AB, Ludvika

### Mounting

Make sure that there is contact between the lower holder and flange. Place the guiding washer inside the lifting lug hole, and then screw the lower holder to the bushing flange. Place the lower arcing horn in the holder aligned edge to edge and fix it with the screws. The bracket and the upper holder are screwed together against the top nut on the bushing. Orientate the upper part approx.  $3^\circ$  as in figure 2, then adjust the **gap distance** by moving both upper and lower arcing horn according to figure 1 ( $\pm 15^\circ$ ). After all adjustments are made, screw tight and finally drill a hole of  $\varnothing 6.5$  mm in the flange where the hole in the lower holder is, put in the screw and the nut, and screw tight.



**Adjustment**

The length of the bushing insulators are mainly determined by the switching impulse withstand level. This value has thus been used for the selection of the gap setting range. The actual setting is usually prescribed by the customer. In case no value is given, we recommend a setting, according to the enclosed curve.

