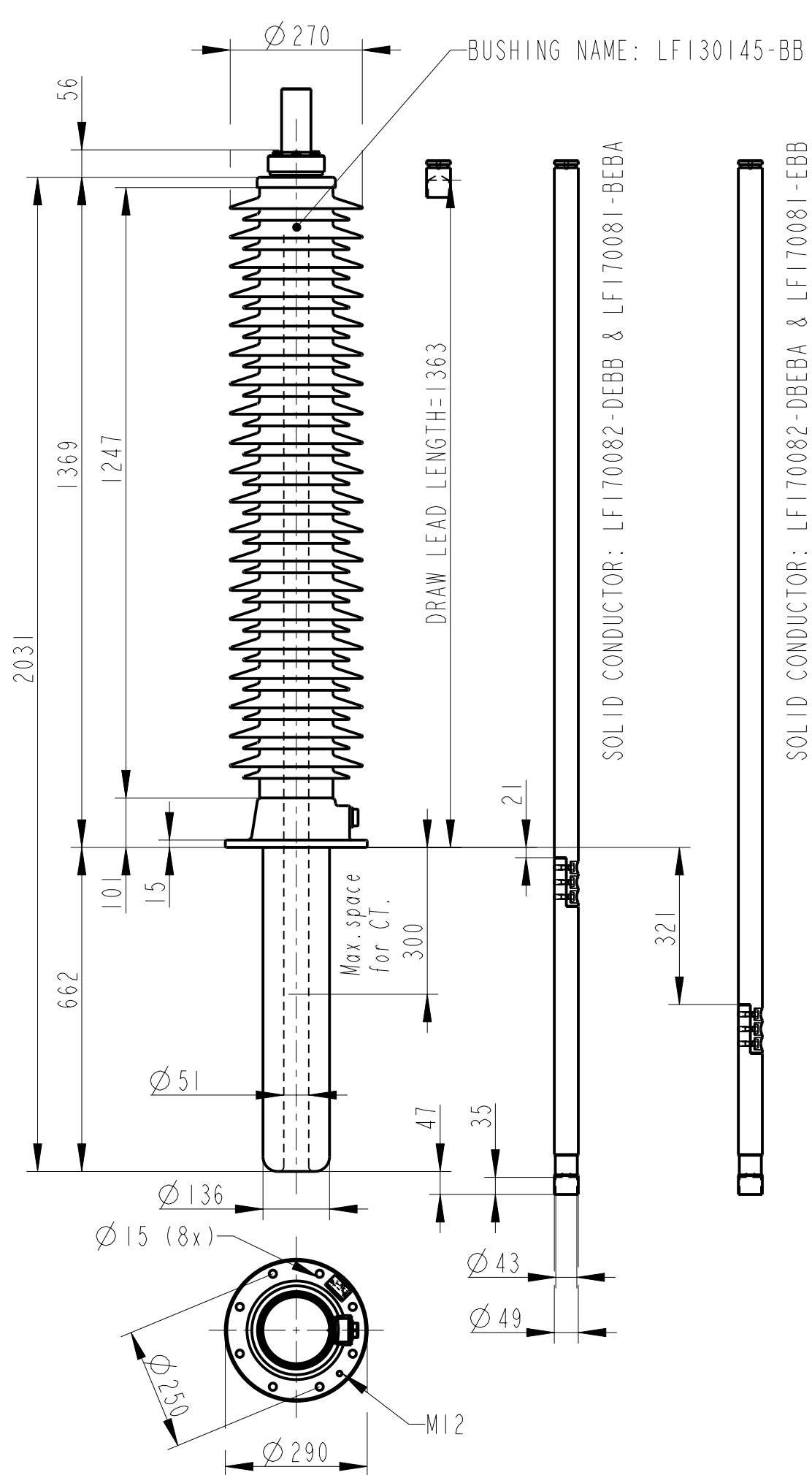
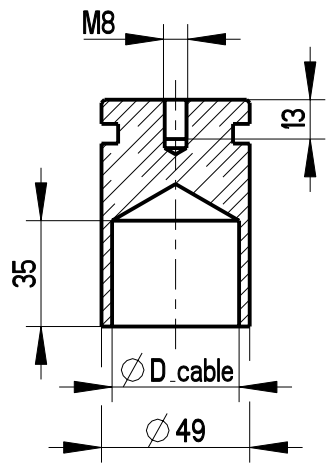


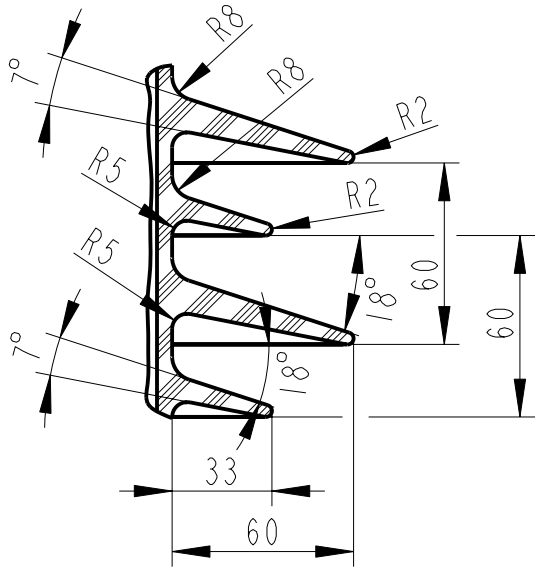
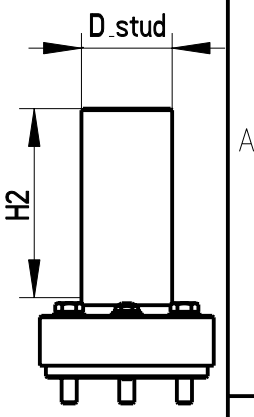
| Rev | Ind | Revision                | Appd | Date  |
|-----|-----|-------------------------|------|-------|
| 1   |     | Electrical data changed | JL   | 02 19 |



| INNER TERMINAL |         |      |
|----------------|---------|------|
| Catalogue No   | D cable | MASS |
| LF170080-A     | 5       | 1    |
| LF170080-B     | 11      | 1    |
| LF170080-C     | 13      | 1    |
| LF170080-D     | 15      | 1    |
| LF170080-E     | 18      | 1    |
| LF170080-F     | 30      | 1    |
| LF170080-G     | 42      | 1    |
| LF170080-H     | 45      | 1    |
| LF170080-N     | 20      | 1    |



| OUTER TERMINAL |          |      |     |        |  |
|----------------|----------|------|-----|--------|--|
| Catalogue No   | Material | Mass | H2  | Ø Stud |  |
| LF170079-A     | AL       | 2.3  | 125 | 60     |  |
| LF170079-B     | AL       | 1.6  | 125 | 30     |  |
| LF170079-C     | CU       | 6.2  | 125 | 60     |  |
| LF170079-D     | CU       | 3.6  | 125 | 30     |  |
| LF170079-E     | CU/SN    | 6.2  | 125 | 60     |  |
| LF170079-F     | CU/SN    | 3.6  | 125 | 30     |  |
| LF170079-G     | CU/AG    | 6.2  | 125 | 60     |  |
| LF170079-H     | CU/AG    | 3.6  | 125 | 30     |  |



| ABB PTP Components Ludvika, Sweden  |                                |
|-------------------------------------|--------------------------------|
| GSA145-OA/1600/0.3                  | LF130145-BB                    |
| No.                                 |                                |
| U <sub>dry</sub> 170/170 kV         | I <sub>r</sub> 1600 A 50-60 Hz |
| U <sub>SI</sub> AC 650 / - / 300 kV |                                |
| M 57 kg                             | L 662 mm V 0-90                |
| C1 pF Tan δ                         | z                              |
| C2 pF Tan δ                         | z                              |

| ELECTRICAL DATA, according to IEC 137 |   |        |
|---------------------------------------|---|--------|
| Ratings                               | Rated voltage                                       | 170 kV |
|                                       | Max phase to earth voltage, temporary               | 170 kV |
|                                       | Max current with Cu-conductor                       | 1600 A |
|                                       | Max current with stranded cable 740 mm <sup>2</sup> | 1000 A |
|                                       | Dry lightning impulse                               | 650 kV |
|                                       | Wet power frequency                                 | 275 kV |
| Routine test                          | Dry power frequency                                 | 310 kV |
| Capacitance                           | Nominal capacitance                                 | 337 pF |

| GENERAL DATA, according to IEC 137 |  |               |
|------------------------------------|--|---------------|
| Silicone rubber insulator          | Creepage distance                      | 4595 mm       |
|                                    | Protected creepage distance            | 2000 mm       |
|                                    | Colour                                 | GREY RAL 7035 |
| Mass                               | Mass bushing                           | 57 kg         |
| Cantilever load                    | Cantilever test load, heavy load       | 4000 N        |
|                                    | Max cantilever operating load, bushing | 2000 N        |
| Temp class                         | Temperature class                      | CLASS 2       |
| Mounting and service instructions  |  | 2750 515-115  |

| ELECTRICAL DATA according to ANSI C57.19.00        |   |        |
|--|---|--------|
| Ratings  | Insulation class                                    | 138 kV |
|  | Rated max. line to ground voltage                   | 102 kV |
|  | Max current with Cu-conductor                       | 1600 A |
|  | Max current with stranded cable 740 mm <sup>2</sup> | 1000 A |
| Dim. requirements acc. to C57.19.01 not fulfilled. |   |        |

Signatures acc. to Revision 0 are valid  
Signaturer enligt Revision 0 gäller

Production engineering review  
ÅSMO

Inspection engineering review  
K-E ANDERSSON

Design engineering review  
F. STÄHLE

|                          |                                       |   |
|--------------------------|---------------------------------------|---|
| Based on                 | Reg. No.                              | Title<br><b>OIL-AIR BUSHING</b><br>GSA145-OA/1600/0.3 |
| Prepared<br>P. SJÖBERG   | Responsible department<br>COM/BK 0024 |   |
| Approved<br>H. JOHANSSON | Take over department                  | Language<br><b>82</b>                                 |
| Revision                 | Database                              |   |
|                          |                                       | Page<br><b>1(1)</b>                                   |
|                          |                                       | Document No.<br><b>2751362-EBB</b>                    |

We reserve all rights in this document and in the information contained therein. Reproduction, use or disclosure to third parties without express authority is strictly forbidden. © ABB