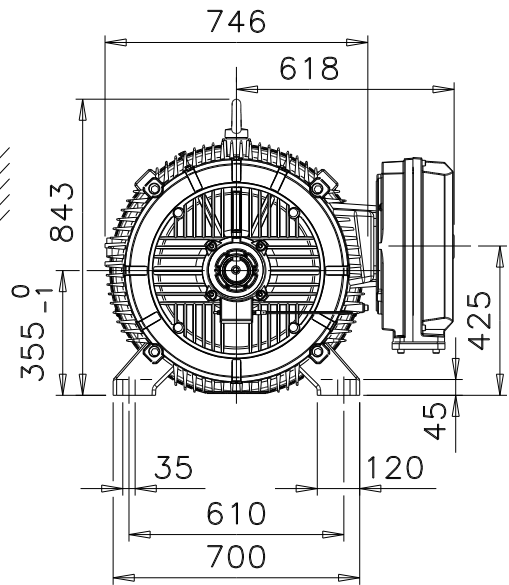
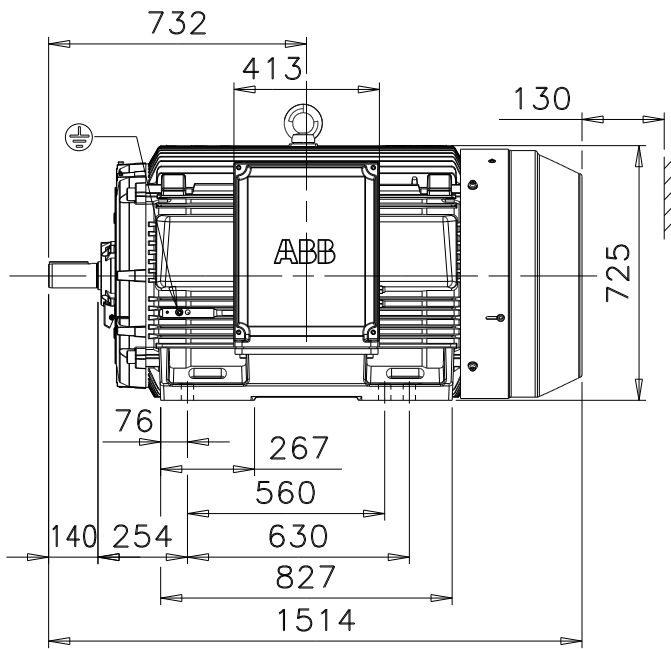


$\phi 70m6 (+0.030 / +0.011)$



Additional information:

Dimension Print	Motor Type: M3/M4BP 355ML_2 B3, B6, B7, B8, V5, V6	Document No: 3GZF500035-89 D
	M3HP/GP 355ML_2 B3, B6, B7, B8, V6	13 BP 355 A
Description: STANDARD SQUIRREL CAGE MOTOR, TERMINAL BOX 750 RHS		
Unit: Motors	Issued by: A-R.Mäki	Replaces:
Date: 18.08.2010	Approved by: J-P.Alanen	Replaced by:
ABB Oy	Customer Reference:	ABB