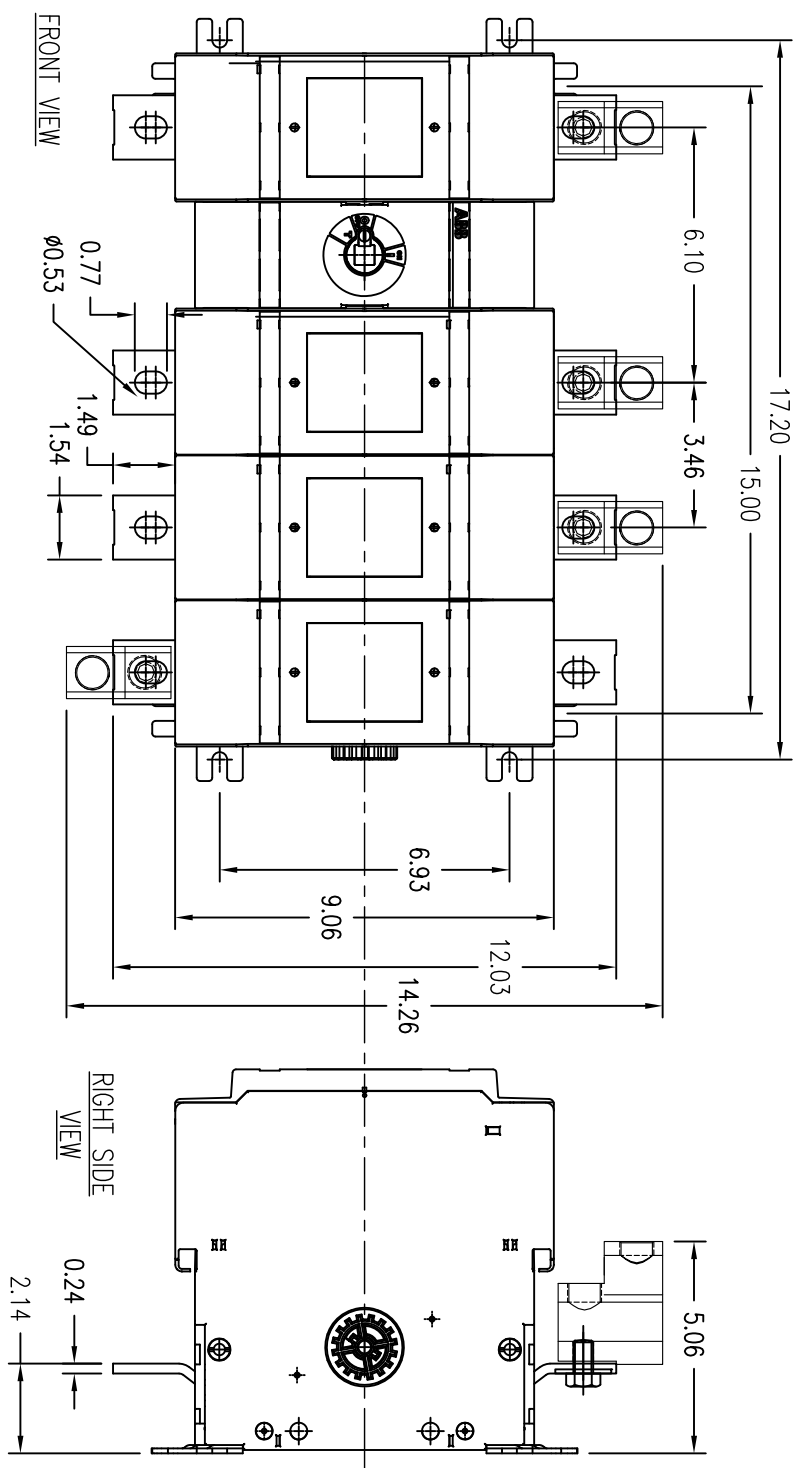


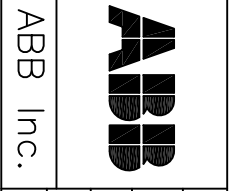
DRAWING NUMBER
D 2501 8014-020



BOTTOM VIEW

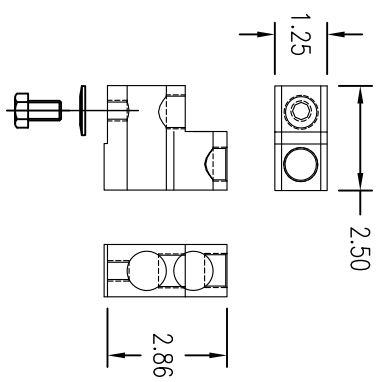
REV.	LET.	REVISIONS	DATE	REV OR APPD BY

THIS DRAWING IS THE PROPERTY OF ABB Inc. AND CONTAINS PROPRIETARY AND CONFIDENTIAL INFORMATION WHICH IS NOT TO BE REPRODUCED OR DISCLOSED OTHER THAN EXPRESSLY AUTHORIZED BY ABB Inc.



DATE: 10/03/11
DRAWN: F. GARCIA
CHK'D: [blank]
PROJECT NO. [blank]
SHEET 1 OF 1

REV. A
TITLE: OS600J13
4-Pole Class J Fused Open Type Switch
DRAWING NUMBER: D 2501 8014-0120



Short Circuit Rating at 600VAC		
KA	Fuse/AI	Fuse class
200	600	J

3-phase HP Ratings		
VAC	240	480
600	480	600
HP	200	400
	400	500

Accessories:
Operating Handle
OH8175J12 - Type 1, 3R, 12
OH8175L12 - Type 1, 3R, 4, 4X, 12
Ref. drawing D 2301 8001-001 for pistol grip handle dimensions and installation details.

Terminal Lug Kits
OZXA-800 - 8 lugs
Wire Range:
(2) #2 AWG - 600kcmil
AL7CU, UL Listed

Operating Shaft - Max. encl. depth
OXP12X220 - 12.00 in.
OXP12X280 - 14.50 in.
OXP12X325 - 16.30 in.
OXP12X395 - 19.10 in.
OXP12X465 - 21.80 in.
OXP12X625 - 28.10 in.

Auxiliary Contacts
OA1G10 - 1n.o.
OA3G01 - 1n.c.
OEA28 - Module for aux. contacts