

OVR NE12 Enclosed SPD

OVRNE12320480DX

UL 1449 3rd Edition



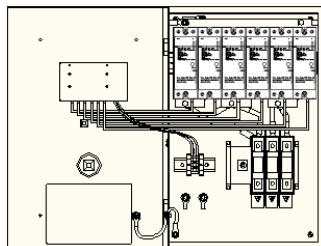
Surge Protective Devices

Technical Characteristics

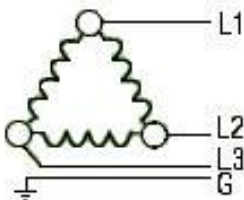
Service voltage		480V Delta
Application		Service entrance
Phases		3
Mode of protection		L-L / L-N / L-G / N-G
Surge capacity/phase (I _{max})	kA	320
Maximum Continuous Operating Voltage (MCOV)	V	550
Voltage Protection Rating (VPR - UL 3rd Ed.)		
L-N	V	/
L-L	V	1800
L-G	V	1800
N-G	V	/
Nominal discharge current (I _n)	kA	10
Short circuit current rating (SCCR)	kA	200
AC power frequency	Hz	50-60
Thermal fuse		Type J 100A
EMI/RFI filtering	dB	-30

Mechanical Characteristics

Connection terminals	Inches	1/4 - 5/16 - 3/8 - 1/2
Terminal torque	Nm	6 - 75
Auxiliary contact connection terminals	AWG	22 - 12
Auxiliary contact terminal torque	Nm	1
Front display		Yes
LED indicators		Yes
Audible alarm		Yes
Auxiliary contact		Yes
Surge counter		Yes
Enclosure material		Painted steel
Enclosure rating		NEMA 12
Dimensions H x W x D (approx.)	Inches	24" x 16" x 8"
Weight (approx.)	lbs	40



Internal layout



Service voltage configuration

Miscellaneous Characteristics

Stocking temperature		32°F (0°C) to 104°F (40°C)
Operating temperature		32°F (0°C) to 104°F (40°C)
Maximum altitude		6600 feet (2000 m)
Fire resistance according to UL 94		V0
Approvals		ANSI/UL 1449 3rd Ed. Meets IEEE requirements

Replacement MOV Block

OVR1N160480PS (power supply)
OVR1N160480

1SXU430011L0201 March 2011 Subject to change without notice.

ABB, Inc.
New Berlin, WI
Phone: 888-385-1221
www.abb.us/lowvoltage

Power and productivity
for a better world™ **ABB**