

DRAWING NUMBER
D 2501 8003-017

OT800U03
600VAC 800A 3-Pole
Non-Fused Open Type Switch
Rotary operated

cULus Listed, 97C2
Open Type Switch
UL File #101914
CSA Certified, File #58077

Short Circuit Rating at 600VAC

KA	Fuse/A	Fuse class
100	1200	L
50		Circuit Breaker

3-phase HP Ratings		
VAC	240	480 600
HP	250	500 600

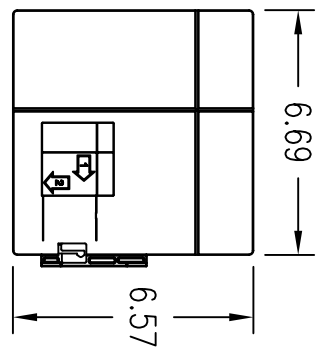
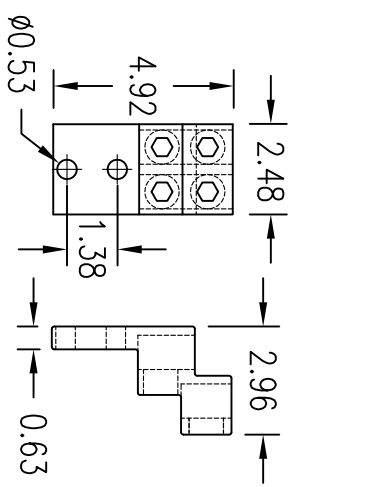
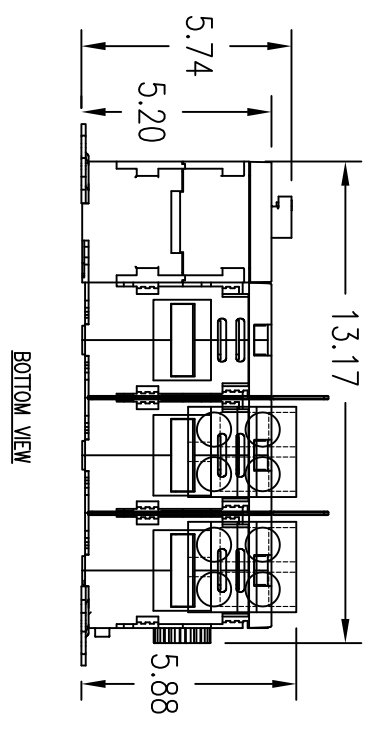
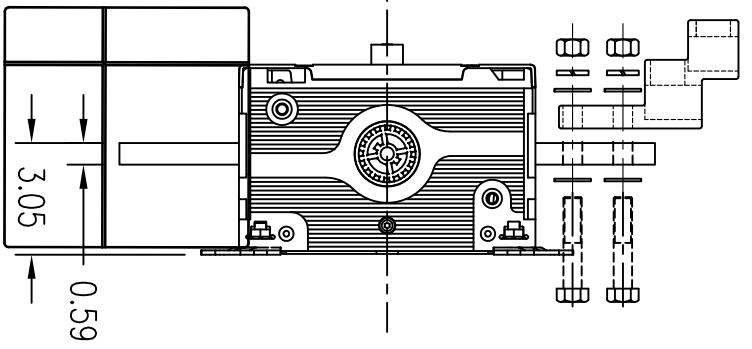
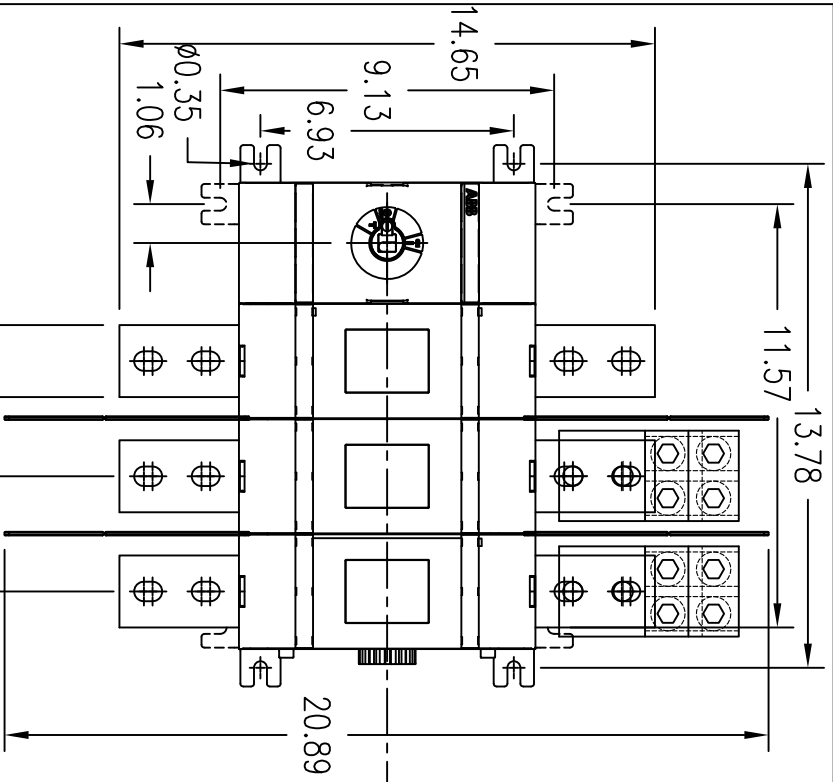
Accessories:


Operating Handle
OHB200J12P - Type 1, 3R, 12
OHB200L12P - Type 1, 3R, 4, 4X, 12
YASDA-9 - Type 4X
Ref. drawing D 2301 8001-001
for pistol handle dimensions and
installation details.

Terminal Lug Kits
OZXA-1200 - 6 Lugs
Wire Range:
(4) #2 AWC - 600kcmil
AL7CU, UL Recognized

Operating Shaft - Max. encl. depth
OXP12X280 - 15.20 in.
OXP12X325 - 17.00 in.
OXP12X395 - 19.70 in.
OXP12X465 - 22.40 in.
OXP12X535 - 25.20 in.

Auxiliary Contacts
DA1G10 - 1n.o.
OA3G01 - 1n.c.



REV. LET.	REVISIONS	DATE	REV OR APPD BY	<p>THIS DRAWING IS THE PROPERTY OF ABB Inc. AND CONTAINS PROPRIETARY AND CONFIDENTIAL INFORMATION WHICH MUST NOT BE OR REPRODUCED OR DISCLOSED OTHER THAN EXPRESSLY AUTHORIZED BY ABB Inc.</p> 	DATE	REV.	TITLE	
		14/3/11			DRAWN	F. GARCIA	A	OT800U03
					CHK'D			3-Pole Non-Fused Open Type Switch
					PROJECT NO.			DRAWING NUMBER
				SHEET	1 OF 1	A	D 2501 8003-017	