

DRAWING NUMBER  
D 2501 8003-018

OT800U12  
600VAC 800A 3-Pole  
Non-Fused Open Type Switch  
Rotary operated

cULus Listed, 97C2  
Open Type Switch  
UL File #101914  
CSA Certified, File #58077

Short Circuit Rating at 600VAC		
KA	Fuse/A	Fuse class
100	1200	L
50	Circuit Breaker	

3-phase HP Ratings		
VAC	240	480 600
HP	250	500 600

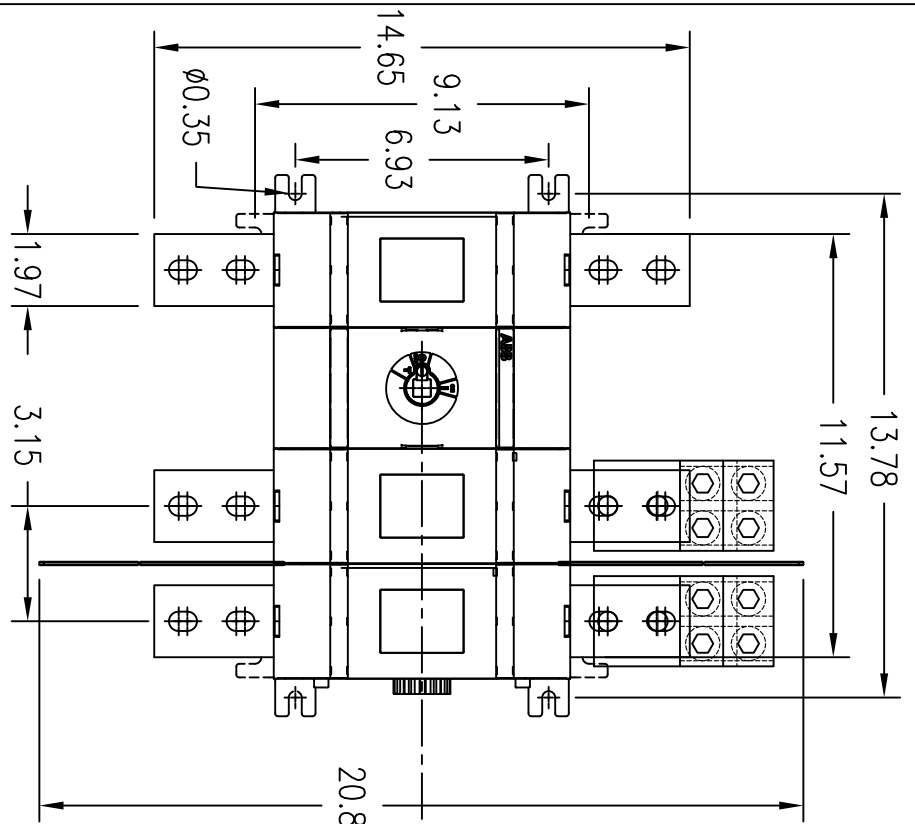
Accessories:

Operating Handle  
OHB200J12P - Type 1, 3R, 12  
OHB200L12P - Type 1, 3R, 4, 4X, 12  
YASDA-9 - Type 4X  
Ref. drawing D 2301 8001-001  
for pistol handle dimensions and  
installation details.

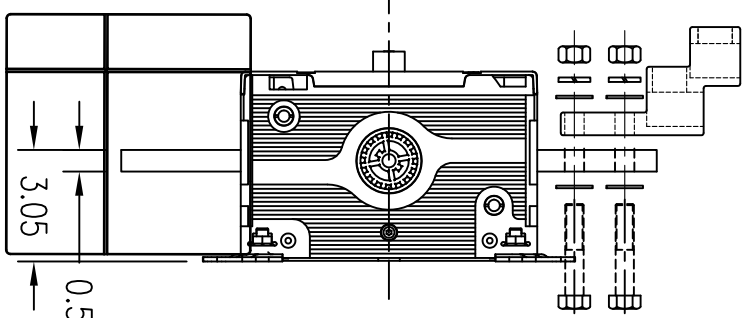
Terminal Lug Kits  
OZXA-1200 - 6 Lugs  
Wire Range:  
(4) #2 AWC - 600kcmil  
AL7CU, UL Recognized

Operating Shaft - Max. encl. depth  
OXP12X280 - 15.20 in.  
OXP12X325 - 17.00 in.  
OXP12X395 - 19.70 in.  
OXP12X465 - 22.40 in.  
OXP12X535 - 25.20 in.

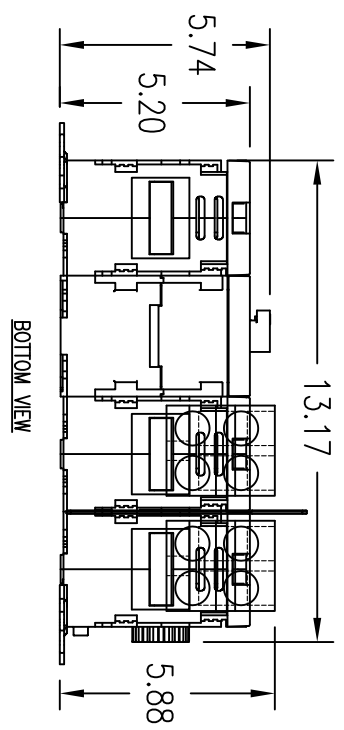
Auxiliary Contacts  
DA1G10 - 1n.o.  
OA3G01 - 1n.c.



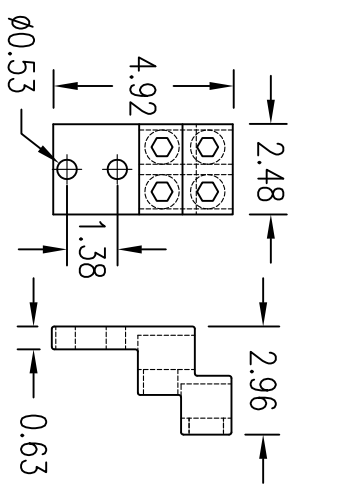
FRONT VIEW




RIGHT SIDE VIEW



BOTTOM VIEW



PHASE BARRIER

REV. LET.	REVISIONS	DATE	REV OR APPD BY	<p>THIS DRAWING IS THE PROPERTY OF ABB Inc. AND CONTAINS PROPRIETARY AND CONFIDENTIAL INFORMATION WHICH MUST NOT BE OR REPRODUCED OR DISCLOSED OTHER THAN EXPRESSLY AUTHORIZED BY ABB Inc.</p> 	DATE	REV.	TITLE	
		14/3/11			DRAWN	F. GARCIA	A	3-Pole Non-Fused Open Type Switch
					CHK'D			
					PROJECT NO.			DRAWING NUMBER
				SHEET	1 OF 1	A	D 2501 8003-018	