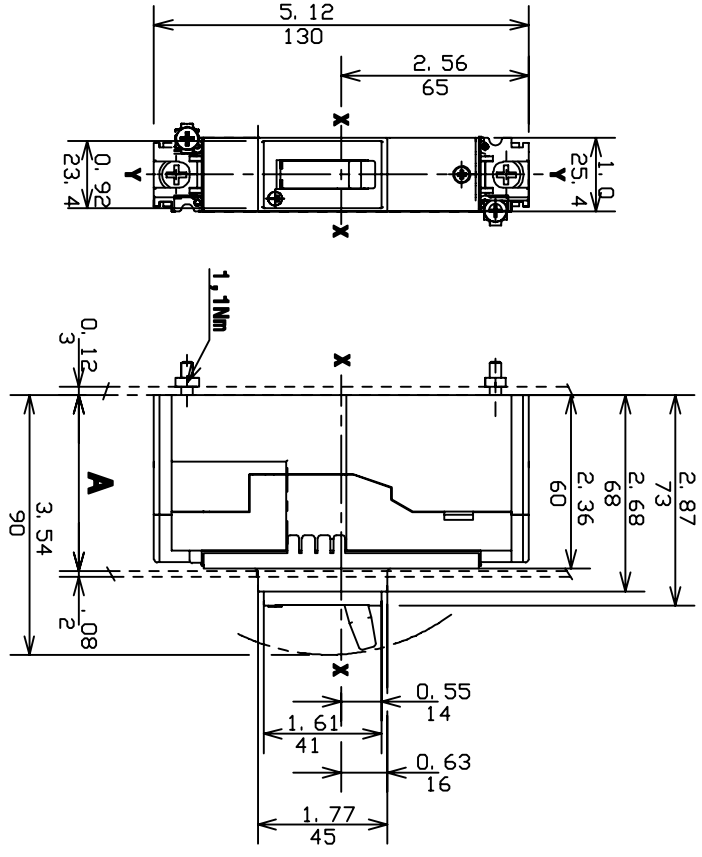


FORMULA A1	
FRAME SIZE	100
RATED CURRENT	15...100
POLES	1
RATED SERVICE VOLTAGE - AC (50/60 HZ)	240
RATED SERVICE VOLTAGE - DC	125
VERSION	FIXED



RATED ULTIMATE SHORT CIRCUIT BREAKING CAPACITY		
PERFORMANCE LEVEL	A	N
INTERRUPTING RATING @ 240VAC	10 kA	18 kA
INTERRUPTING RATING @ 125VDC	5 kA	10 kA
INTERRUPTING RATING @ 250VDC	-	-
REFERENCE STANDARD	UL 489	

DISTANCE BETWEEN COMPARTMENT DOOR AND BACK OF SWITCHBOARD WITHOUT FLANGE	A [mm/in]
1, 2, & 3 POLE	69/2.72
1, 2, & 3 POLE	61/2.40

THE CIRCUIT BREAKER INSTALLED AT:
 - A = 69mm/2.72in HAS THE FACE AROUND THE OPERATING LEVER EXTENDING FROM THE COMPARTMENT DOOR;
 - A = 61mm/2.40in HAS THE FACE AROUND THE OPERATING LEVER AND STEEL WITH CONSTRUCTION CHARACTERISTICS EXTENDING FROM THE COMPARTMENT DOOR;

ACCESSORIES		
DIRECT ROTARY HANDLE		PART NUMBER N/A
EXTENDED ROTARY HANDLE		N/A
LOW INSULATING TERMINAL COVERS		N/A
HIGH INSULATING TERMINAL COVERS		N/A
PHASE SEPARATORS - LOW		N/A
PHASE SEPARATORS - HIGH		N/A
FRONT TERMINALS FOR CUAl CABLES - 80A		KA1080-1
FRONT TERMINALS FOR CUAl CABLES - 100A		KA1100-1

DO NOT SCALE DRAWING		SCALE FULL		DIMENSIONS ARE IN IN [mm]	
MATERIAL:		FINISH:		STANDARD TOLERANCES ANGLES	
2 PL DEC. ±.030		3 PL DEC. ±.030		±1°	
REV. LET.		REVISIONS		DATE	
REV. OR		APPD BY		DATE	
2 PL DEC. ±.030		3 PL DEC. ±.030		±1°	
THIS DRAWING IS THE PROPERTY OF ABB Inc. AND CONTAINS PROPRIETARY AND CONFIDENTIAL INFORMATION WHICH MUST NOT BE REPRODUCED, COPIED OR DISCLOSED WITHOUT THE EXPRESS AUTHORIZATION BY ABB Inc.					
DATE 9/1/11		DRAWN TD		REV. A	
CHK'D		APP'R'D		SIZE A	
SHEET 1 OF 1		DRAWING NUMBER		D 2201 9000-002	
ABB Inc.		FORMULA BREAKER A1 - 1 POLE TECHNICAL DATA		PART	