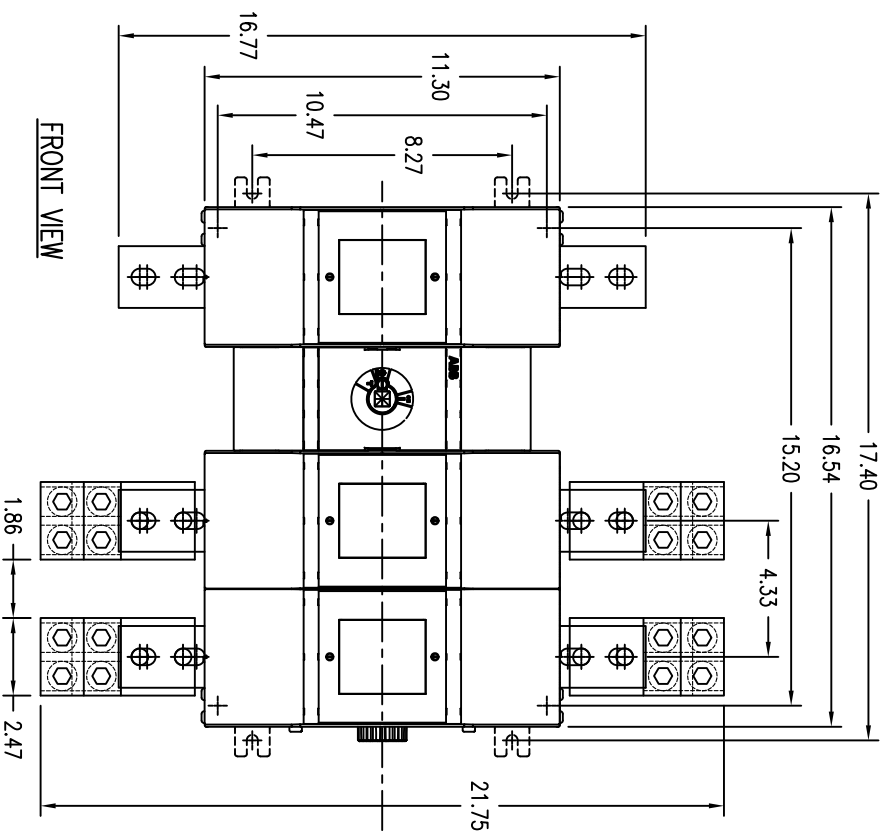
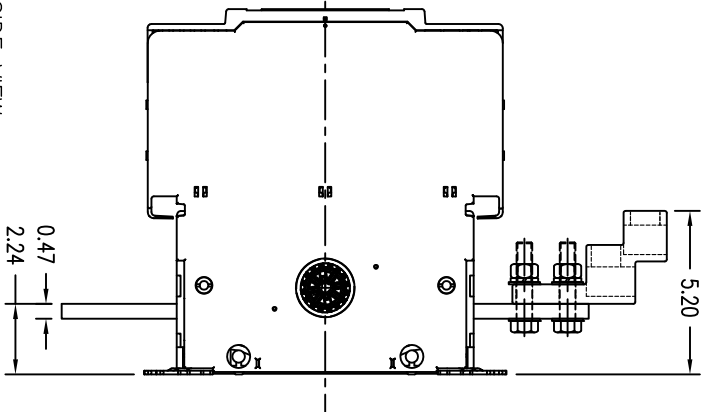


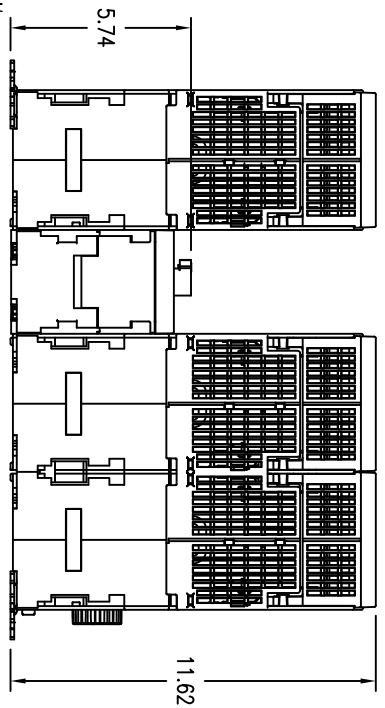
DRAWING NUMBER
D 2501 8013-021



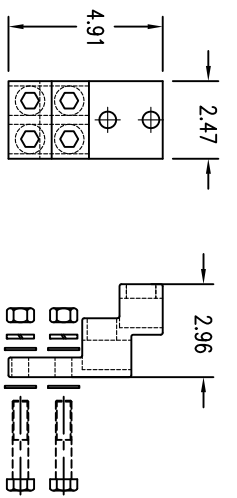
FRONT VIEW



RIGHT SIDE VIEW



BOTTOM VIEW



Short Circuit Rating at 600VAC		
KA	Fuse/A	Fuse class
200	1200	L

OS1200L12
600VAC 1200A 3-Pole
Class L Fused Open
Type Switch
Rotary operated
Cullus Listed, 97C2
Open Type Switch
UL File #E101914

Accessories:

Operating Handle
OHB200J12P - Type 1, 3R, 12
OHB200L12P - Type 1, 3R, 4, 4X, 12
Ref. drawing D 2301 8001-014 for
t-style grip handle dimensions and
installation details.

Terminal Lug Kits
OZXA-1200 - 6 lugs
OZXA-1200/3 - 3 lugs
Wire Range:
(4) #2 AWG - 600kcmil
AL7CU, UL Listed

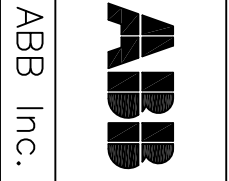
Operating Shaft - Max. encl. depth
OXP12X280 - 15.20 in.
OXP12X325 - 17.00 in.
OXP12X395 - 19.70 in.
OXP12X465 - 22.40 in.
OXP12X355 - 25.20 in.

Auxiliary Contacts
OATG10 - 1n.o.
OASG01 - 1n.c.
OEA28 - Module for contacts

CUST / SHOP

DO NOT SCALE DRAWING	
SCALE 5/32"	DIMENSIONS ARE IN INCHES
Material:	
Finish:	
STANDARD TOLERANCES	
2 PL DEC. ±.030	3 PL DEC. ±.030
ANGLES ±1°	
REV. LET.	REVISIONS
DATE	REV OR APPD BY

THIS DRAWING IS THE PROPERTY OF ABB Inc. AND CONTAINS PROPRIETARY AND CONFIDENTIAL INFORMATION WHICH MUST NOT BE OR REPRODUCED, COPIED, OR DISCLOSED WITHOUT THE AUTHORIZED BY ABB Inc.



DATE	11/3/11
DRAWN	F. GARCIA
CHK'D	
APP'R'D	
SHEET	1 OF 1

REV.	TITLE
A	OS1200L12 3-POLE FUSIBLE OPEN TYPE SWITCH
SIZE	DRAWING NUMBER
A	D 2501 8013-021