

DRAWING NUMBER
D 2501 8003-019

OT1200U03
600VAC 1200A 3-Pole
Non-Fused Open Type Switch
Rotary operated

cuLus Listed, 97C2
Open Type Switch
UL File #101914
CSA Certified, File #58077

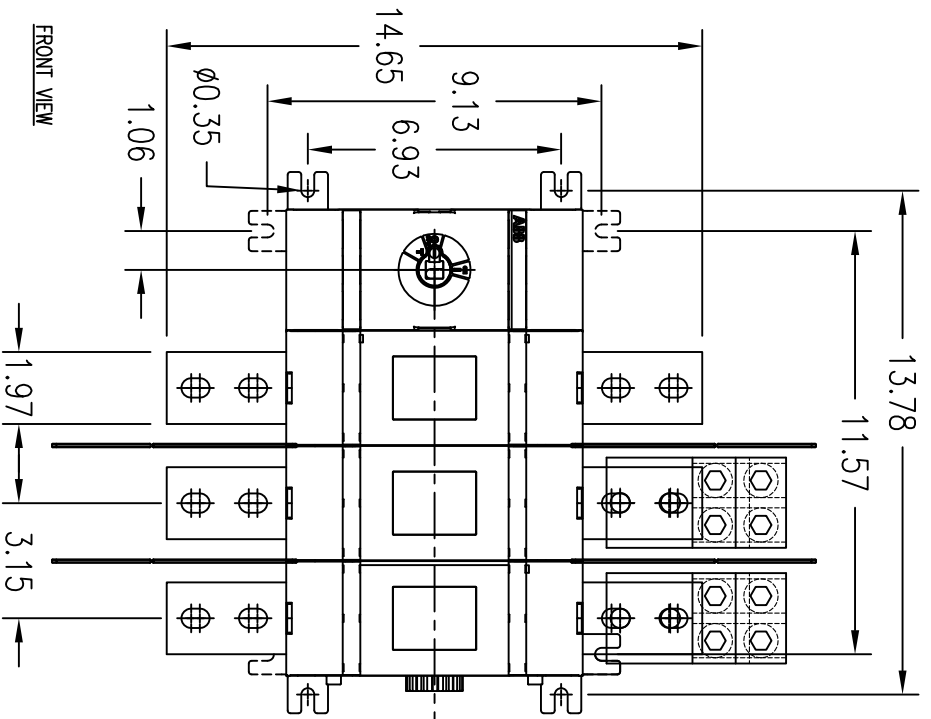
Short Circuit Rating at 600VAC		
KA	Fuse/A	Fuse class
100	1200	L
50		Circuit Breaker

Accessories:

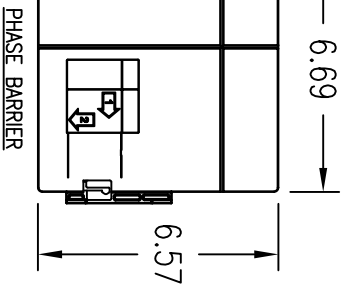
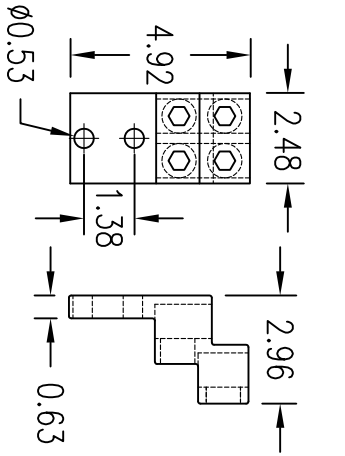
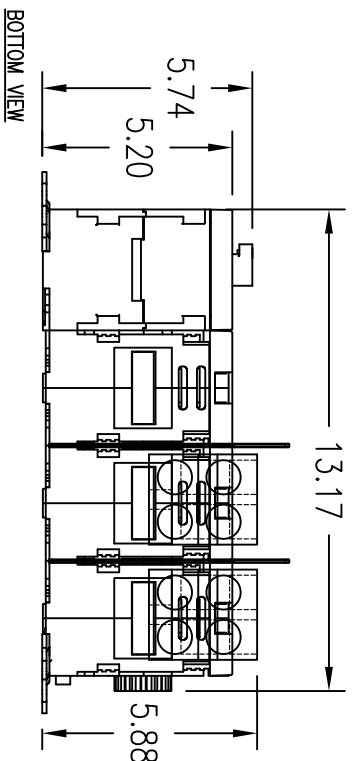
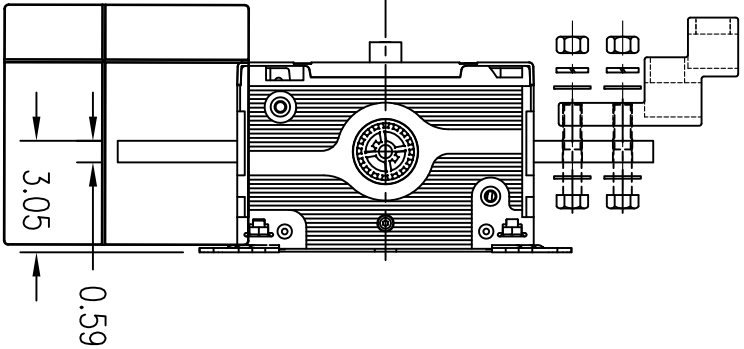
Operating Handle
OHB200J12P - Type 1, 3R, 12
OHB200L12P - Type 1, 3R, 4, 4X, 12
YASDA-9 - Type 4X
Ref: drawing D 2301 8001-001
for pistol handle dimensions and
installation details.


Terminal Lug Kits
O7XA-1200 - 6 Lugs
Wire Range:
(4) #2 AWG - 600Kcmil
AL7CU, UL Recognized

Operating Shaft - Max. encl. depth
OXP12X280 - 15.20 in.
OXP12X325 - 17.00 in.
OXP12X395 - 19.70 in.
OXP12X465 - 22.40 in.
OXP12X535 - 25.20 in.
Auxiliary Contacts
OA1G10 - 1n.o.
OA3G01 - 1n.c.



RIGHT SIDE VIEW



REV. LET.	REVISIONS	DATE	REV OR APPD BY	<p>THIS DRAWING IS THE PROPERTY OF ABB Inc. AND CONTAINS PROPRIETARY AND CONFIDENTIAL INFORMATION WHICH MUST NOT BE OR REPRODUCED OR DISCLOSED OTHER THAN EXPRESSLY AUTHORIZED BY ABB Inc.</p> 	DATE	REV.	TITLE	
		11/3/11			DRAWN	F. GARCIA	A	OT1200U03
					CHK'D			3-Pole Non-Fused Open Type Switch
					PROJECT NO.			DRAWING NUMBER
				SHEET	1 OF 1	A	D 2501 8003-019	