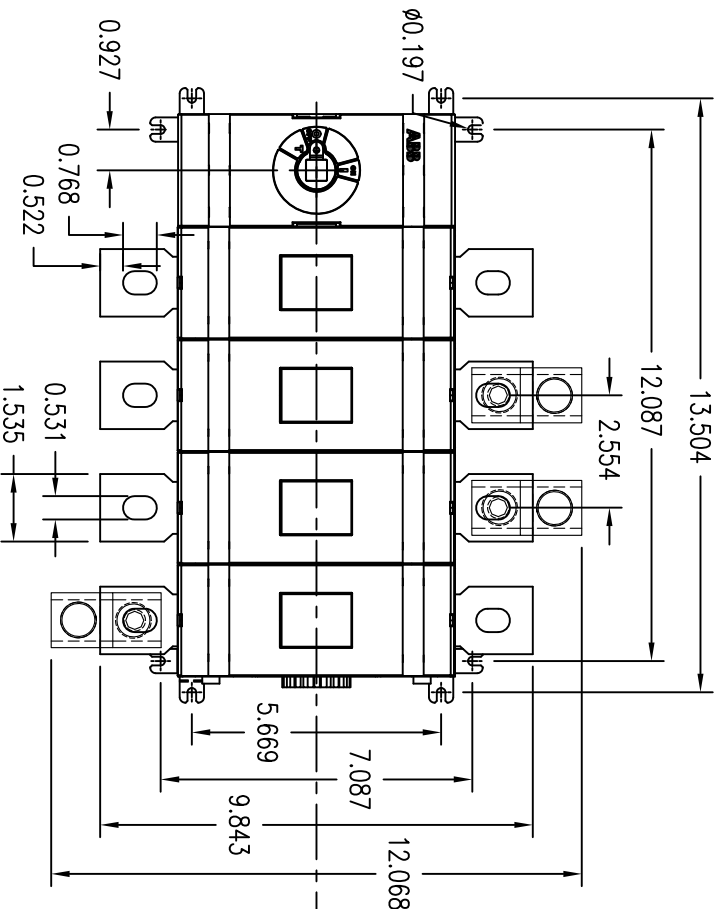
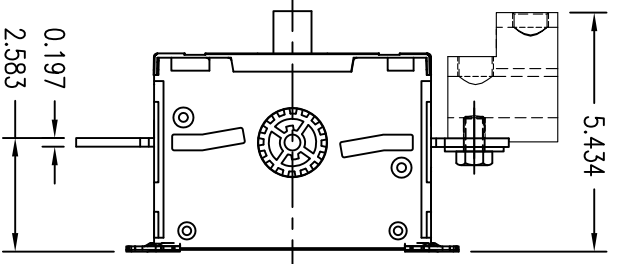


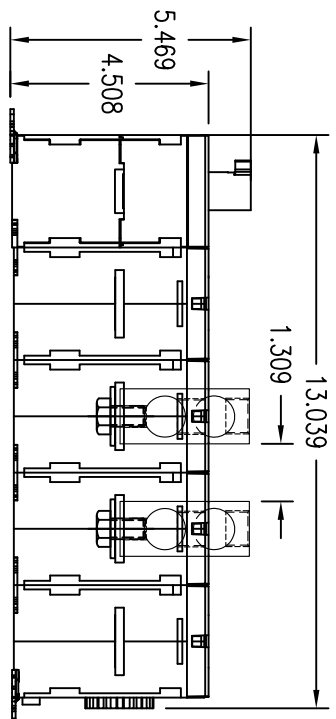
DRAWING NUMBER
D 2501 8004-012



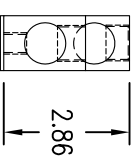
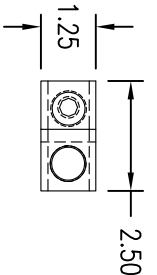
FRONT VIEW



RIGHT SIDE VIEW



BOTTOM VIEW



Short Circuit Rating at 600VAC		
KA	Fuse/A	Fuse class
100	800	J, T or L
100	600	RK5
35		Circuit Breaker

3-phase HP Ratings				
VAC	208	240	480	600
HP	150	200	450	500

Accessories:

Operating Handle
 OHB175J12 - Type 1, 3R, 12
 OHB175L12 - Type 1, 3R, 4, 4X, 12
 Ref. drawing D 2301 8001-001 for pistol grip handle dimensions and installation details.

Terminal Lug Kits

OZXA-800 - 8 lugs
 Wire Range:

(2) #2 AWG - 600kcmil
 AL7CU, UL Listed

Operating Shaft - Max. encl. depth

OXp12X220 - 12.00 in.
 OXp12X280 - 14.50 in.
 OXp12X325 - 16.30 in.
 OXp12X395 - 19.10 in.
 OXp12X465 - 21.80 in.
 OXp12X625 - 28.10 in.

Auxiliary Contacts

OA1G10 - 1n.o.
 OA3G01 - 1n.c.

REV. LET.	REVISIONS	DATE	REV OR APPD BY	<p>THIS DRAWING IS THE PROPERTY OF ABB Inc. AND CONTAINS PROPRIETARY AND CONFIDENTIAL INFORMATION WHICH MUST NOT BE OR REPRODUCED OR DISCLOSED OTHER THAN EXPRESSLY AUTHORIZED BY ABB Inc.</p>		DATE	REV.	TITLE
						14/3/11	A	OT600U04
						F. GARCIA	A	4-Pole Non-Fused Open Type Switch
						PROJECT NO.		DRAWING NUMBER
				SHEET 1 OF 1	A	D 2501 8004-012		