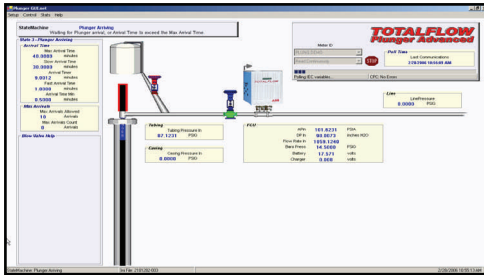


AUTOMATION OBJECTIVE

The buildup of liquid (water or oil) in a gas well causes a bottom hole back pressure on the producing formation. The result is a decrease in the gas flow, a production drop below the normal well Decline Curve, and lost revenue. A Plunger inserted into a well serves as a mechanical seal between the gas and liquid. While the well is shut-in, bottom hole pressure increases and becomes the driving force to move the plunger and the liquid to the surface. This efficient control of removing liquid from the well results in an increase in gas production.



AUTOMATION SOLUTION

The **Totalflow** XSeries Flow Computers and Remote Controllers are programmed with three user selectable variations of Plunger Automated Control: Advanced, Safety, and Turner Curve. Enhanced On/Off operation of the gas sales valve and the liquid production valve is achieved as the XSeries monitors several well parameters to provide inputs to a Continuous Control Tuning Algorithm. This algorithm is the key element in Optimized Plunger Operation. Set-up is made locally with a laptop computer using Totalflow PCCU software or remotely with Totalflow WinCCU software or SCADA Vantage. The initialization requirements are menu selectable. An easy to use Graphical User's Interface is also available.

SOLUTION BENEFITS

- **Increased Production:** may achieve up to 20% increase.
- **Continuous Tuning Control Algorithm:** Optimum performance of the Plunger is maintained by a continuous tuning of the On/Off state of the gas sales valve and liquid production valve.
- **Easy Installation:** mount XSeries; connect solar panel; connect wiring to valves and pressure transmitters.
- **Simple Start-up:** enter initialization requirements with PCCU software, WinCCU software or Graphical User's Interface.
- **Low Power Electronics:** helps extend battery life, reduces maintenance expense, allows for more run time.
- **Extendable:** the XSeries can also provide flow measurement, alarming, data logging, level measurement, remote communications and nomination control while performing **Plunger Control**.

Totalflow Recommended Equipment:

- Qty 1 – Model XSeries Flow Computer or Remote Controller with Solar Panel
- Qty 1 – PCCU Laptop Communication Software
- Options – Radio for Remote Communications; WinCCU Remote Host Software

Power and Productivity
for a Better World.™

www.abb.com/totalflow
www.abb.us
www.abb.com



ABB Inc.
Totalflow Products
7051 Industrial Blvd.
Bartlesville, OK 74006
Tel: (918) 338-4888
Fax: (918) 338-4699
(800) 442-3097

For more information,
please contact your
local ABB Totalflow
representative or visit
our website.