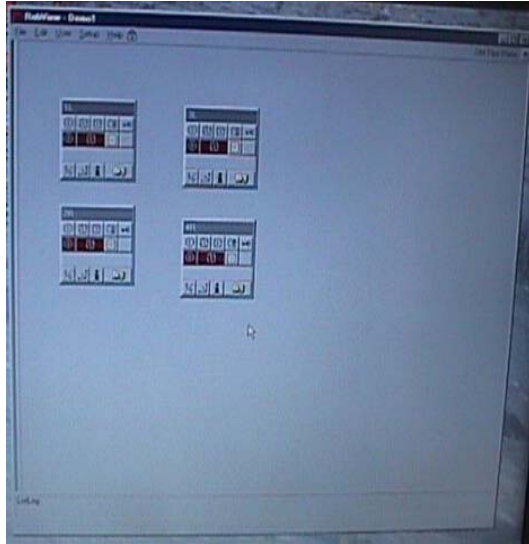


## 4.7.8 Robview Configuration & Programming (US343)



The course goal is to teach students how to load/configure the Robview software on a computer and how to establish serial communication to the S4P controllers.

**Course Duration:** 1 day

### **Topics Include:**

- Safety precautions used while operating a robot system
- General overview of the Robview software and communication
- Loading software and Editing Robview parameters

*After successfully completing the course, the participant should be able to:*

- Practice safety as it pertains to the robot and external controlling devices
- Identify purpose of Robview as a program transfer tool and control device
- Install Robview
- Setup the Robview parameters to establish communication on a computer
- Setup the S4P parameters to establish communication
- Configure Robview
- Create a directory on a PC to store files transferred from the Ram1 disk
- Setup a path to a text editor for editing programs and brushes
- Create screens on Robview for equipment operation during production

### **Student Profile**

- This course is intended for people that are familiar with WindowsNT and the S4P controller
- Engineers, service personnel, and system integrators

### **Prerequisites**

- Prior knowledge of WindowsNT, S4P pendant operation, S4P Basic Programming and System Parameter Configuration can be helpful

### **Course Objectives**