

Color Adjustment Interface

Automatic ink density control on the MPS Control Console

The Color Adjustment Interface extends the MPS Control Console with a fully-integrated interface to an X-Rite ATD News densitometer for the measurement of ink density. The measurements from the densitometer are then used for calculating any necessary corrections to the ink supply on the press.

Full integration

The system makes use of thin gray bars (typically 3 mm high) printed across the newspaper page. On four color pages the bar consists of cyan, magenta and yellow; on black-only pages the gray bar is black-based.

The X-Rite unit is integrated with ABB's control console and the ABB system has the information about the color content and structure of the newspaper. As a result the system knows automatically what sort of gray bar is to be found on which page.

Scanning the newspaper

The scanning of the newspaper can be triggered in two different ways. Either the printer selects the page on the control console and then goes to the X-Rite scanner and scans the page, or the printer can scan multiple pages in advance, identifying each page in turn on the list displayed on the ATD News touch-screen.

Handling of ink values

When the gray bar on a sheet has been scanned, the readings are first checked for plausibility to trap handling errors. Then proposed new ink screw settings are automatically calculated on the basis of the values from the X-Rite scanner. These are then displayed on the MPS Control Console and all the operator has to do is accept or reject the proposal. The operator can do this for either the individual colors or for all three process colors at the same time. The accepted new values are then sent automatically to the ink screws without any further manual action being required.

The result:

Top quality color printing is achieved quickly with reduced waste.

Why automatic ink density control with the Color Adjustment Interface?

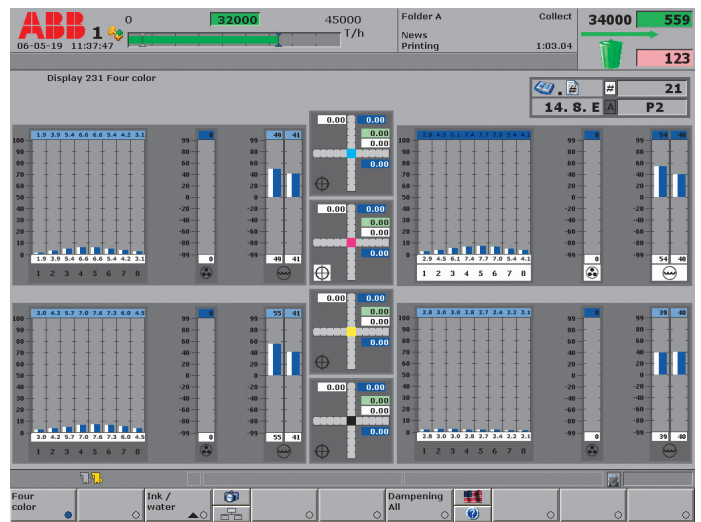
- Standardized reproducible color print quality
- Reduced waste
- Simple operation through full integration
- Emotion-free assessment of color quality

Pass through option

As an option the user can decide that all calculated ink screw changes should automatically be used without the user having to approve them.

System configuration

The system configuration is flexible: one or more X-Rite ATD News system can be connected to one or more presses. The most common configuration is one ATD News unit per press.



The four color display on the MPS Control Console which shows the proposed new ink screw values next to the current ones and allows the operator to approve the values before they are passed on to the press controls.



X-Rite ATD News system with touch-screen system PC

We reserve all rights to this document and the object described herein. Without our explicit consent any reproduction, disclosure to third parties, or use of its content are prohibited.

The above data are exclusively intended to describe a product and must not be construed as warranting certain properties. In our customers' best interest we continuously strive to keep our products at the latest state of technology. Thus differences between the product and the description may occur.

© ABB Switzerland Ltd. 2009

For more information, contact:

ABB Switzerland Ltd
Business Unit Printing
CH-5405 Baden 5 Dättwil
Phone +41.58.586 87 68
Fax +41.58.586 90 54
E-mail bu.printing@ch.abb.com

www.abb.com/printing