

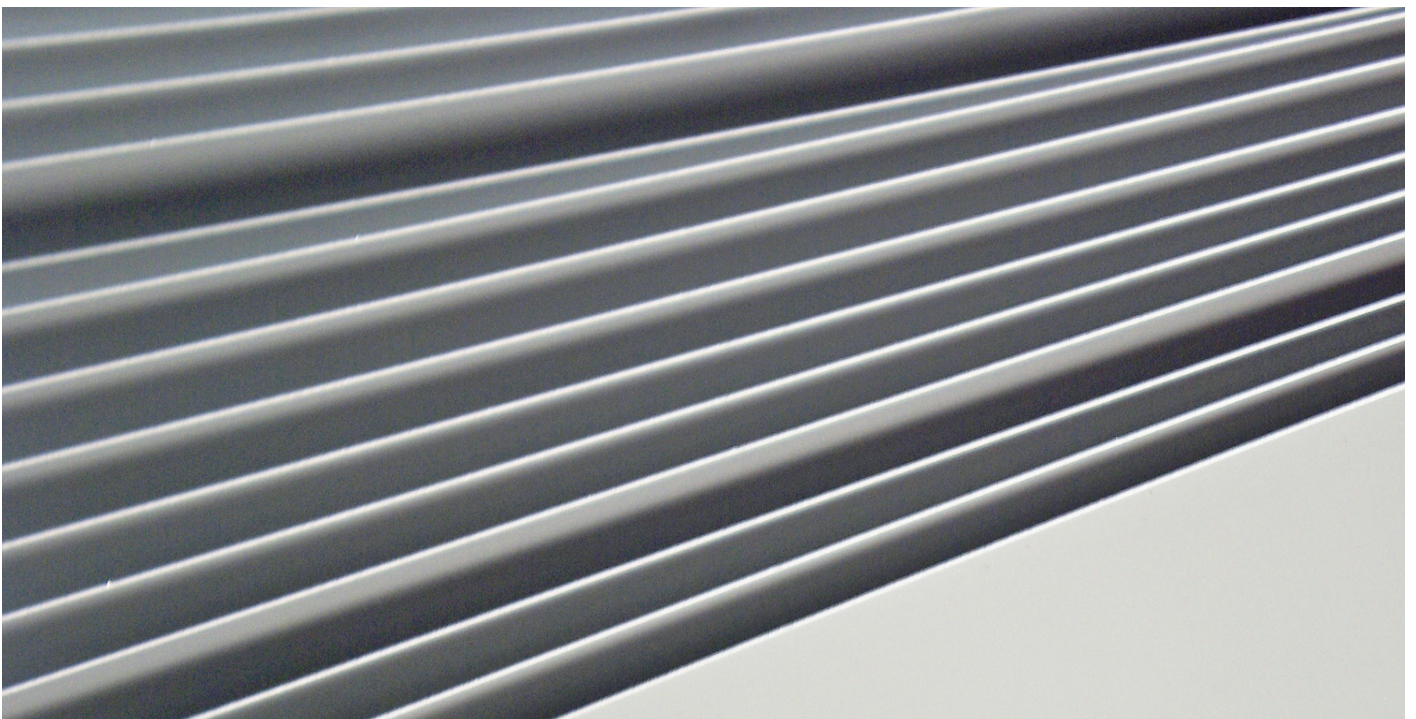


MPS PlateWorkflow

Automated workflow for platemaking

Success for publishers and printing houses can only be achieved with suitable systems for the automation of the various processes. The complete integration of the processes with the optimum use of resources is a decisive factor. MPS PlateWorkflow contributes to this by ensuring the effective and efficient production of the plates.

The unique ABB integration concept SPINE (Seamless Process Integration for Newspaper Enterprises) integrates the plate making with the page planning and the production management of the press. Industrial production and total optimization: this is the recipe for success.



MPS PlateWorkflow for efficient plate production

Page content in the correct format, with the correct colors, in the correct position, and at the right time on the press. The task of MPS PlateWorkflow is to manage, display and to track all this.

After receiving the page data in almost any format, MPS PlateWorkflow rasterizes unseparated data and allocates the data to the current productions. MPS PlateWorkflow takes the relevant product data, such as the number of pages, books, colors and page identification, and the production data such as collect/straight, number of production runs and the web leads used, directly from the press planning system.

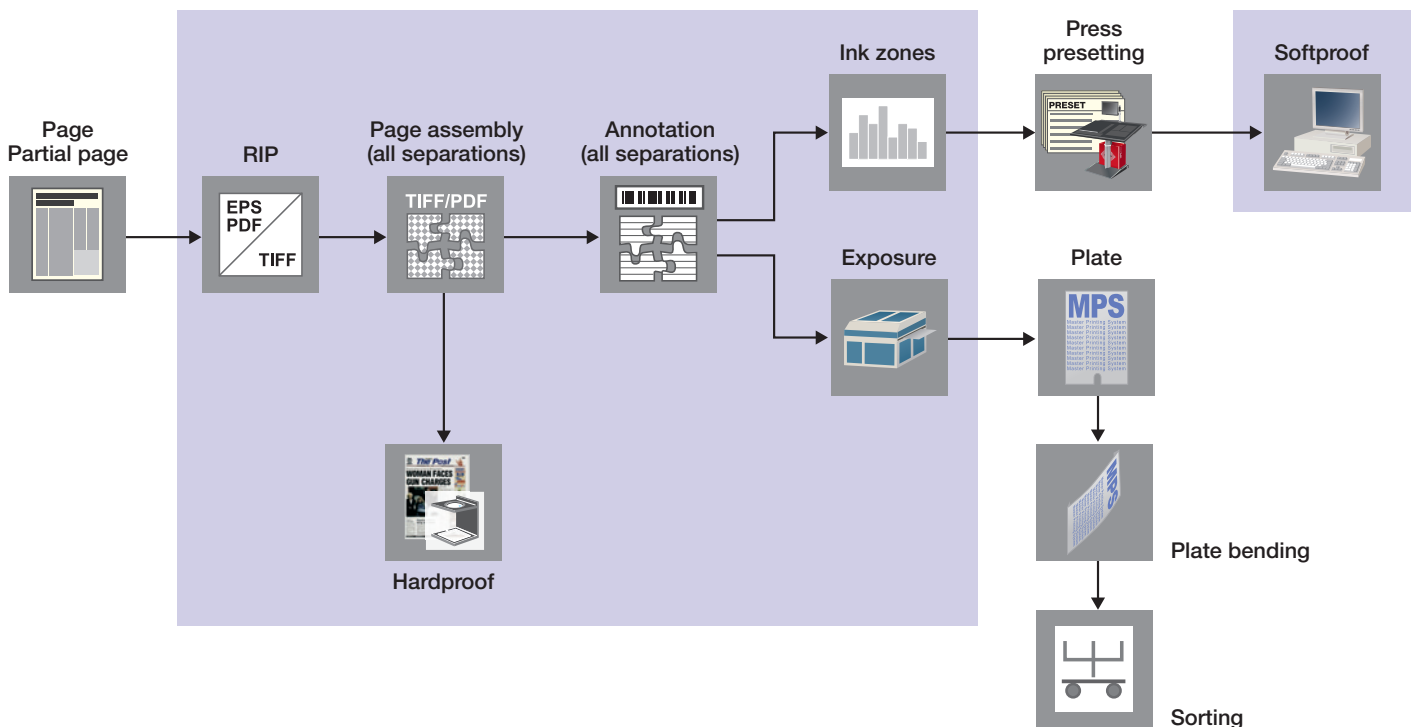
The close integration with the press planning means that the plate production schedule can be optimized and the number of plates produced reduced to a minimum.

The data received are processed according to the customer-specific workflow, where, among others, additional information such as register marks, barcodes, color quality elements and plate location information are added in plain text. MPS PlateWorkflow also automatically calculates all the ink zone values and transmits them to the press presetting system.

MPS PlateWorkflow offers a range of functions for improved color quality management: ICC color calibrated displays, integration of the soft-proofing at the press control consoles or hardproof copies on newsprint. The open architecture of MPS PlateWorkflow also supports the close integration of existing color quality instruments in the workflow.

MPS PlateWorkflow is based on the Newsday system developed by Prolmage. The additional strength of MPS PlateWorkflow is the integration with the press management system.

Functional overview of MPS PlateWorkflow



The functions...

Product structure and production data

The first requirement for the production of the plates is the product structure data. However, the plate production data is only complete in combination with the production data from the presses. This ensures that the correct number of plates and their exact positions in the presses are known. Changes to the structure and also to the planned print jobs are forwarded continuously to the plate production. The reception of the data is made either automatically, or by manual intervention by the user at any time before or during production (see figure 1).

Figure 1: Edition list imported from press management system

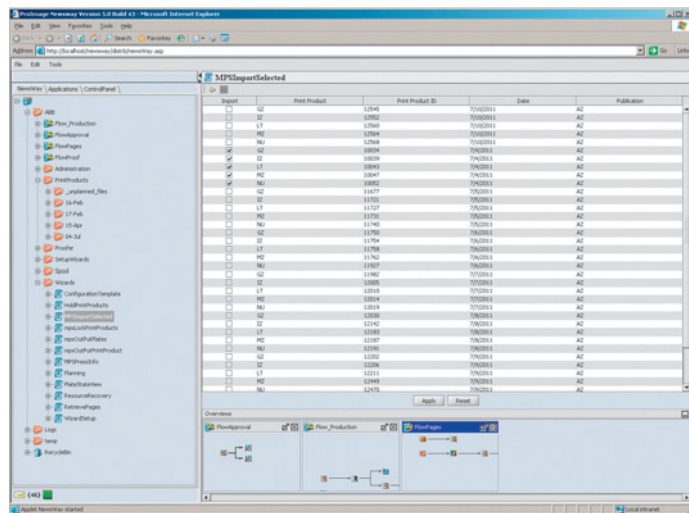
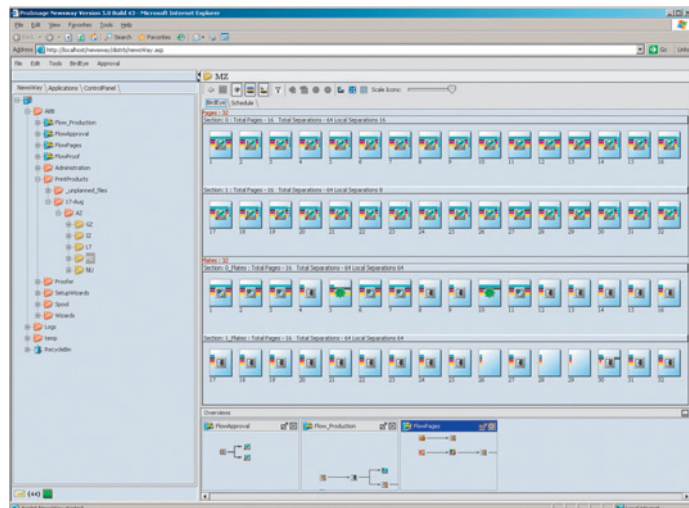


Figure 2: Edition overview with visualization of global pages



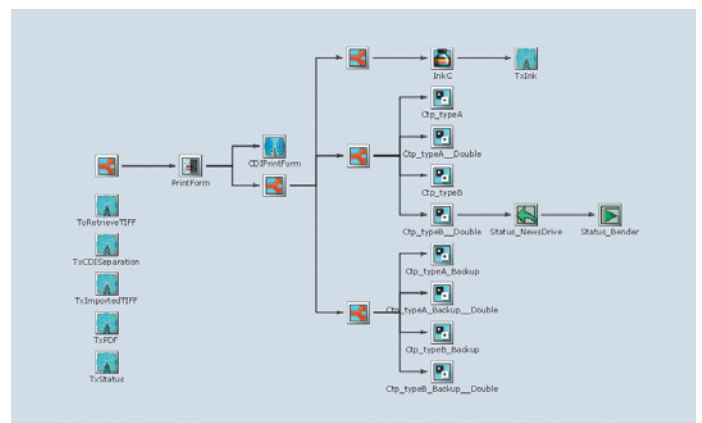
The user has a clear display of the production status at all times. Thanks to the browser technology, every production can be tracked to any level of detail at any workstation in the printing house. The clear visualization of the dependencies between the editions — global, local, and change pages — significantly simplifies the overview (see figure 2).

Workflow automation

MPS PlateWorkflow completely controls the plate production, from the reception of the page data from internal or external prepress systems, up to the punched, bent, and sorted plate. The process sequence is defined together with the customer at the start of a project. Depending on the products to be produced, several, parallel workflow processes can be defined (see figure 3).

Release points can be defined at any place within the workflow. The pages are checked visually at these points and then released. The release can also be made via the Internet, i.e. also by external customers, as MPS PlateWorkflow is a browser-based system.

Figure 3: Typical example of a workflow process



...and your benefits

Production control

The jobs are processed according to a work queue. The jobs are processed based on their priority, which depends on the time schedule of the print jobs on the presses. The individual resources can be switched on or off using the simple to operate buttons (see figure 5).

The load on the various resources such as RIPs, plate making machines and also the available computer resources is distributed and optimized according to various freely definable production rules. The plate making machines are controlled either via a direct hardware connection, or a network connection. This is true for both film and/or CTP.

Production tracking

MPS PlateWorkflow allows the user to track the production with a wide variety of displays. In addition to the current productions, MPS PlateWorkflow archives all the relevant production data using the general IFRatrack 3.0 standards.

The functions at a glance

Plate production based on the production data (plate position, printing start time)

Automatic updating up to immediately before the start of printing

Visualization of the dependencies between editions, i.e. the pages/plates that are used in more than one edition

Workflow procedures that are adapted to the customer's organization

Integration of existing resources, such as RIPs or proofing systems

Optional integrated Harlequin RIP, soft proofing and hard proofing functions

Comprehensive data processing (stitch, merge, text burn, etc.)

Browser based system

Your benefits

Reduction in the number of sources of error by the electronic transmission of the product and production data

Increased efficiency by the improved transparency of the page planning via the press controls to the plate production

Significant reduction in costs by the optimization of the plate production both for the schedule and the number of plates produced

Reduction in the error costs through the possibility of the direct release of the plates by the customer

Minimum personnel required

Modular system architecture, which can be adapted to customer requirements

Independent of the CTP supplier

Figure 4: Display with automatically calculated ink zone values

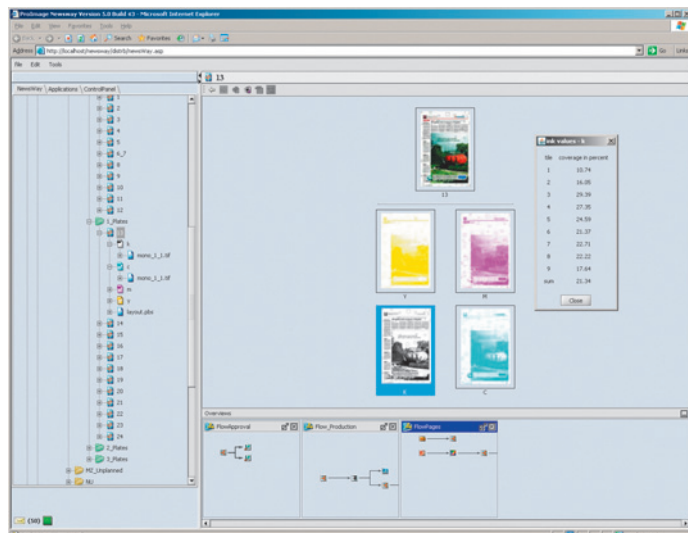
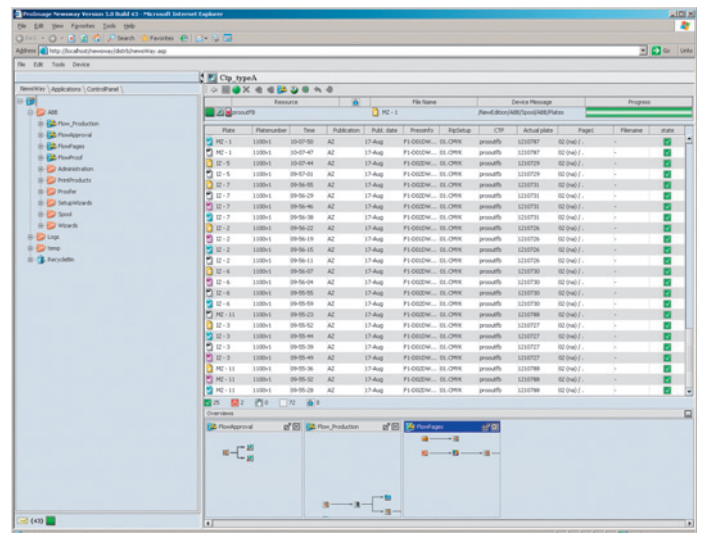


Figure 5: Files queued for exposure



A cooperation between two strong partners

MPS PlateWorkflow is the result of the cooperation between ABB and Prolmage. It gives customers the benefits of News-way, a Prolmage product, and the integration in the ABB MPS world. The result is a continuous, consistent workflow solution for newspaper production, which supports the full integration with the higher-level process management, the page planning, and the production management of the presses.

This cooperation started in June 2001. As a specialist for the integration in the area of newspaper production, ABB takes the responsibility for the demanding task of the integration of the systems. This comprises all the process steps from the specification of the system, via the installation up to the final tests and hand-over, all executed using the most up to date project management methods.

As a result the customer receives an integrated solution from one supplier. A solution that combines the many years' experience of the two partners in prepress, the press, and their integration and optimization. This cooperation also ensures that an overlapping of functions is avoided, and that the products and solutions are developed further on a continuous basis.

We reserve all rights to this document and the object described herein. Without our explicit consent any reproduction, disclosure to third parties, or use of its content are prohibited.

The above data are exclusively intended to describe a product and must not be construed as warranting certain properties. In our customers' best interest we continuously strive to keep our products at the latest state of technology. Thus, differences between the product and the description may occur.

© ABB Switzerland Ltd. 2011

ABB Switzerland Ltd.
Business Unit Printing
CH-5405 Baden 5 Dättwil
Phone +41.58.586 87 68
Fax +41.58.586 90 54
E-mail bu.printing@ch.abb.com

www.abb.com/printing

3EHT 490 463 R0001, Rev. a