

Control^{IT}

S900 Process I/O System

Field Housing FH680S

Data sheet

1.0.0



ABB

NOTICE

The information in this document is subject to change without notice and should not be construed as a commitment by ABB. ABB assumes no responsibility for any errors that may appear in this document.

In no event shall ABB be liable for direct, indirect, special, incidental or consequential damages of any nature or kind arising from the use of this document, nor shall ABB be liable for incidental or consequential damages arising from use of any software or hardware described in this document.

This document and parts thereof must not be reproduced or copied without written permission from ABB, and the contents thereof must not be imparted to a third party nor used for any unauthorized purpose.

The software or hardware described in this document is furnished under a license and may be used, copied, or disclosed only in accordance with the terms of such license.

Copyright © 2003 ABB

All rights reserved.

Release: 1.0.0

Document number: S900_Data-sheet_FH680S

TRADEMARKS

Registrations and trademarks used in this document include:

FieldController	Registered trademark of ABB Automation Products GmbH, Germany.
PROFIBUS and PROFIBUS-DP	Trademark of PROFIBUS International (P.I.) Registered trademark of Microsoft Corporation.
HART	Trademark of HART Communication Foundation



AUTOMATION PRODUCTS

S900 IN FIELD HOUSING FH680S MOUNTING DIAGRAMS

CABLE COLOURS

24 V/DC EEx-e red
 0 V/DC EEx-e blue
 POTENTIAL 24V/DC FIELD: grey
 POTENTIAL 0V/DC FIELD: grey

TERMINALS

X01: SUPPLY VOLTAGE 24 V/DC EEx-e
 X04: POTENTIAL 24 V/DC FIELD-INPUT
 X05: POTENTIAL 24 V/DC FIELD-OUTPUT

CABLE DIAMETER IN FIELD HOUSING

24 V/DC EEx-e 2.5 mm²
 0 V/DC EEx-e 2.5 mm²
 POTENTIAL 24V/DC FIELD: 1.5 mm²
 POTENTIAL 0V/DC FIELD: 1.5 mm²

CABLE DIAMETER EXTERNAL

24 V/DC EEx-e (TERMINALS/DIRECTLY) max. 10.0/2.5 mm²
 0 V/DC EEx-e (TERMINALS/DIRECTLY) max. 10.0/2.5 mm²
 POTENTIAL 24V/DC FIELD: max. 2.5 mm²
 POTENTIAL 0V/DC FIELD: max. 2.5 mm²

**No. INSIDE HOUSING
EXAMPLE**

1 F 2



CROSS SECTION (SEE TOP OF PAGES)
 TYPE OF DEVICE
 PAGE No.

Copyright by ABB AUTOMATION PRODUCTS

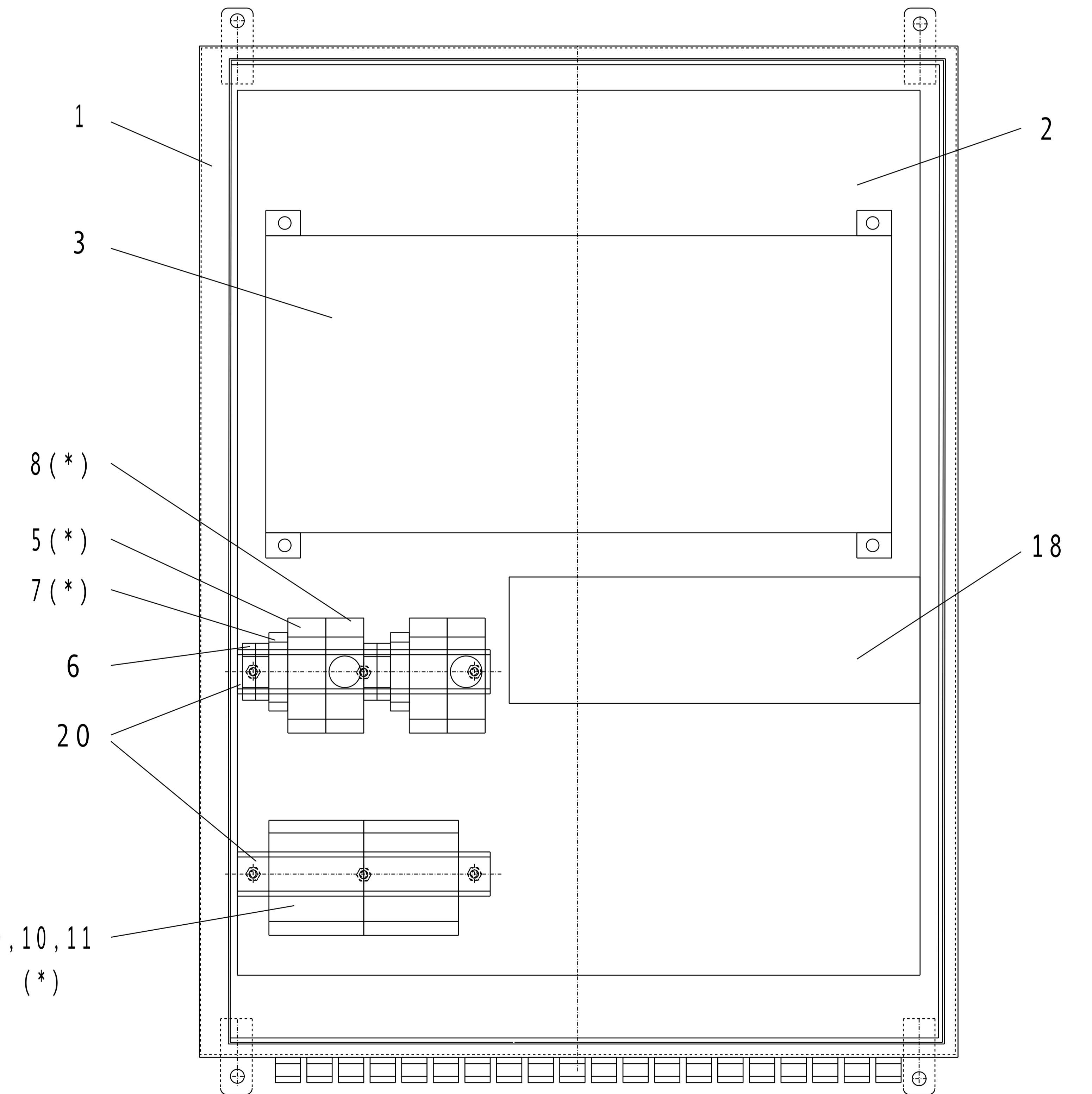
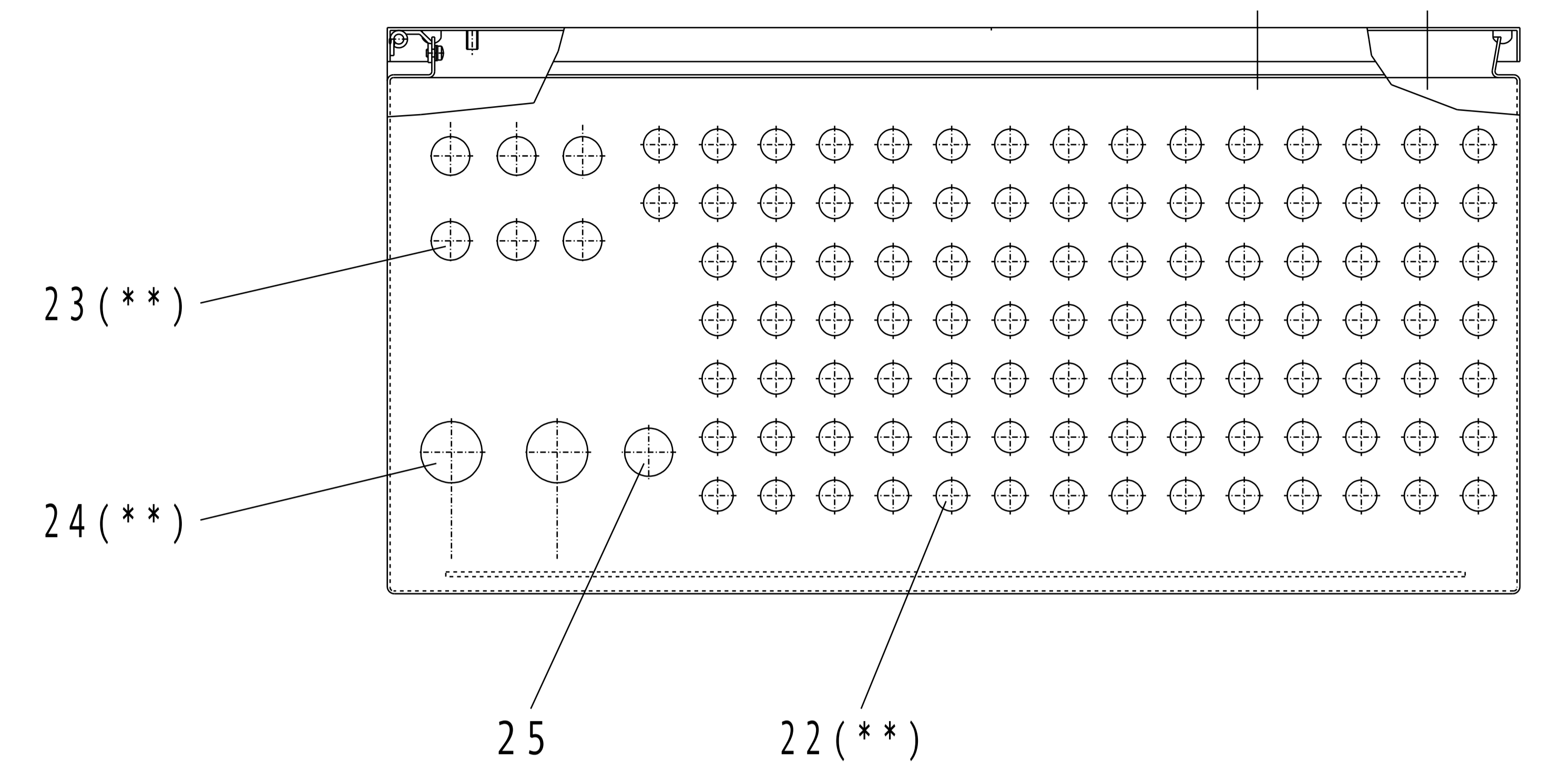
Achtung:
 Diese Technische Dokumentation ist urheberrechtlich geschützt. Die Übersetzung, sowie die Vervielfältigung und Verbreitung in jeglicher Form - auch als Bearbeitung oder in Auszügen - insbesondere als Nachdruck, photomechanische oder elektronische Wiedergabe oder in Form von Speicherung in Datenverarbeitungsanlagen oder Datennetzen ohne Genehmigung des Rechteinhabers sind untersagt und werden

Copyright by ABB AUTOMATION PRODUCTS

Attention:
 This technical documentation is protected by copyright. Translating, photocopying and disseminating it in any form whatsoever - even editings or excerpts thereof - especially as reprint, photomechanical or electronic reproduction or storage on data processing systems or networks is not allowed without the permission of the copyright owner and non-compliance will lead to both civil and criminal prosecution.

F	a	Ordering Matrix	04.11.03	Schulz			S900 IN FIELD HOUSING	ABB AUTOMATION PRODUCTS Borsigstrasse 2, D - 63755 Alzenau © COPYRIGHT BY ABB AUTOMATION PRODUCTS	COVER SHEET FH680S-0XXX MOUNTING DIAGRAM (A1)	PROJECT S900 IN FIELD HOUSING	A1		1
	b				DATE	13.03.2003	600x800x300 mm (WxHxD)						
	c				DRAWN	Schulz							
	d				COORD.								
DETAILS OF REVISION		DATE	NAME	CHECKED	ORIG.	REPL.							

POSITION	QUANTITY	DESCRIPTION	TYPE/ORDER-No.	REMARKS
1	1	HOUSING STAINLESS STEEL	Rose A 11313	800x600x300x1,5 mm
2	1	MOUNTING PLATE, STAINLESS STEEL	Rose	700x540x2,5 mm
3	1	TERMINATION UNIT (BACKPLANE), REDUNDANCE	ABB TU921S	
4				
5	(*)	POWER CONDITIONER	ABB BP901S	
6	4	TERMINALS 24VDC	Phoenix UK10N-Ex	X01, max.10mm2
7	(*)	SWITCH (OPTION)	BARTEC 07-7311-6131/EE00	
8	(*)	ISOLATING REPEATER WITH BUS TERMINATION (OPTION)	ABB BI913S	CU POINT-TO-POINT COUPLER
9	(*)	LWL-COUPLER (OPTION)	ABB BI921S	
10	(*)	LWL-RING COUPLER (OPTION)	ABB BI923S	
11	(*)	LWL-T-COUPLER (OPTION)	ABB BI922S	
12				
13				
14				
15				
16				
17				
18	1	CABLE DUCT, BLUE	STANDARD	100x80 mm/325 mm lang
19				
20	2	DIN RAIL TS35	STANDARD	35x7,5 mm/200 mm lang
21				
22	100	CABLE GLAND M16, EEx-e (**)	Caprie CMDEL-T	CABLE DIAMETER 6-11 mm
23	6	CABLE GLAND M20, EEx-e (**)	Caprie CMDEL-T	CABLE DIAMETER 8,5-13 mm
24	2	CABLE GLAND M32; EEx-e (**)	Caprie CMDEL-T	CABLE DIAMETER 17,5-25 mm
25	1	DRAIN PLUG/BREATHER M25, EEx e	Stahl 8162003020	
26				
27				
28				
29				
30				



MAXIMUM ASSEMBLY SHOWN

(*) SPECIFIC ASSEMBLY WITH POS. 5-11 SEE ORDERING MARTIX (SHEET 3)!
 (**) ALL CABLE GLANDS EMV WITH SHIELD CONNECTION

ORDERING MATRIX HOUSING FH680S-0XXX

(DIMENSIONS 600x800x300 mm (WxHxD))

FH680S-0XXX

ISOLATING REPEATER OPTION
(CU-COUPLER) BI913S
WITH BUS TERMINATION
AND LWL COUPLER

- 0= WITHOUT
- 1= 1 PIECE BI913S
- 2= 2 PIECES BI913S (FOR REDUNDANCE)
- 3= 1 PIECE BI913S / LWL COUPLER (BI921S) EACH
- 4= 2 PIECES BI913S / LWL COUPLER (BI921S) EACH
- 5= 1 PIECE BI913S / LWL RING-COUPLER (BI923S) EACH
- 6= 2 PIECES BI913S / LWL RING-COUPLER (BI923S) EACH
- 7= 1 PIECE BI913S / LWL T-COUPLER (BI922S) EACH
- 8= 2 PIECES BI913S / LWL T-COUPLER (BI922S) EACH

SWITCH OPTION
(BARTEC 07-7311-6131/EE00)

- 0= WITHOUT
- 1= 1 PIECE
- 2= 2 PIECES (FOR REDUNDANCE)

POWER CONDITIONER OPTION
(BP901S)

- 1= 1 PIECE
- 2= 2 PIECES (FOR REDUNDANCE)

NOT USED

- 0= WITHOUT

NOTE!
POWER CONDITIONER IS/ARE REQUIRED ALWAYS!

ALL VARIANTS ARE EQUIPPED WITH
4 TERMINALS (PHOENIX UK10N)

a	Ordering Matrix	04.11.03	Schulz			S900 IN FIELD HOUSING	 ABB AUTOMATION PRODUCTS Borsigstrasse 2, D - 63755 Alzenau	FH680S-0XXX	ORDERING MATRIX	A1	3	
b			DATE	13.03.2003	600x800x300 mm (WxHxD)							
c			DRAWN	Schulz								
d			COORD.									
DETAILS OF REVISION		DATE	NAME	CHECKED	ORIG.	REPL.	© COPYRIGHT BY ABB AUTOMATION PRODUCTS			PROJECT S900 IN FIELD HOUSING	PURCHASE ORDER No.:	



AUTOMATION PRODUCTS

S900 IN FIELD HOUSING FH680S CIRCUIT DIAGRAMS

CABLE COLOURS

24 V/DC EEx-e red
 0 V/DC EEx-e blue
 POTENTIAL 24V/DC FIELD: grey
 POTENTIAL 0V/DC FIELD: grey

TERMINALS

X01: SUPPLY VOLTAGE 24 V/DC EEx-e
 X04: POTENTIAL 24 V/DC FIELD-INPUT
 X05: POTENTIAL 24 V/DC FIELD-OUTPUT

CABLE DIAMETER IN FIELD HOUSING

24 V/DC EEx-e 2.5 mm²
 0 V/DC EEx-e 2.5 mm²
 POTENTIAL 24V/DC FIELD: 1.5 mm²
 POTENTIAL 0V/DC FIELD: 1.5 mm²

CABLE DIAMETER EXTERNAL

24 V/DC EEx-e (TERMINALS/DIRECTLY) max. 10.0/2.5 mm²
 0 V/DC EEx-e (TERMINALS/DIRECTLY) max. 10.0/2.5 mm²
 POTENTIAL 24V/DC FIELD: max. 2.5 mm²
 POTENTIAL 0V/DC FIELD: max. 2.5 mm²

No. INSIDE HOUSING
EXAMPLE

1 F 2



CROSS SECTION (SEE TOP OF PAGES)
 TYPE OF DEVICE
 PAGE No.

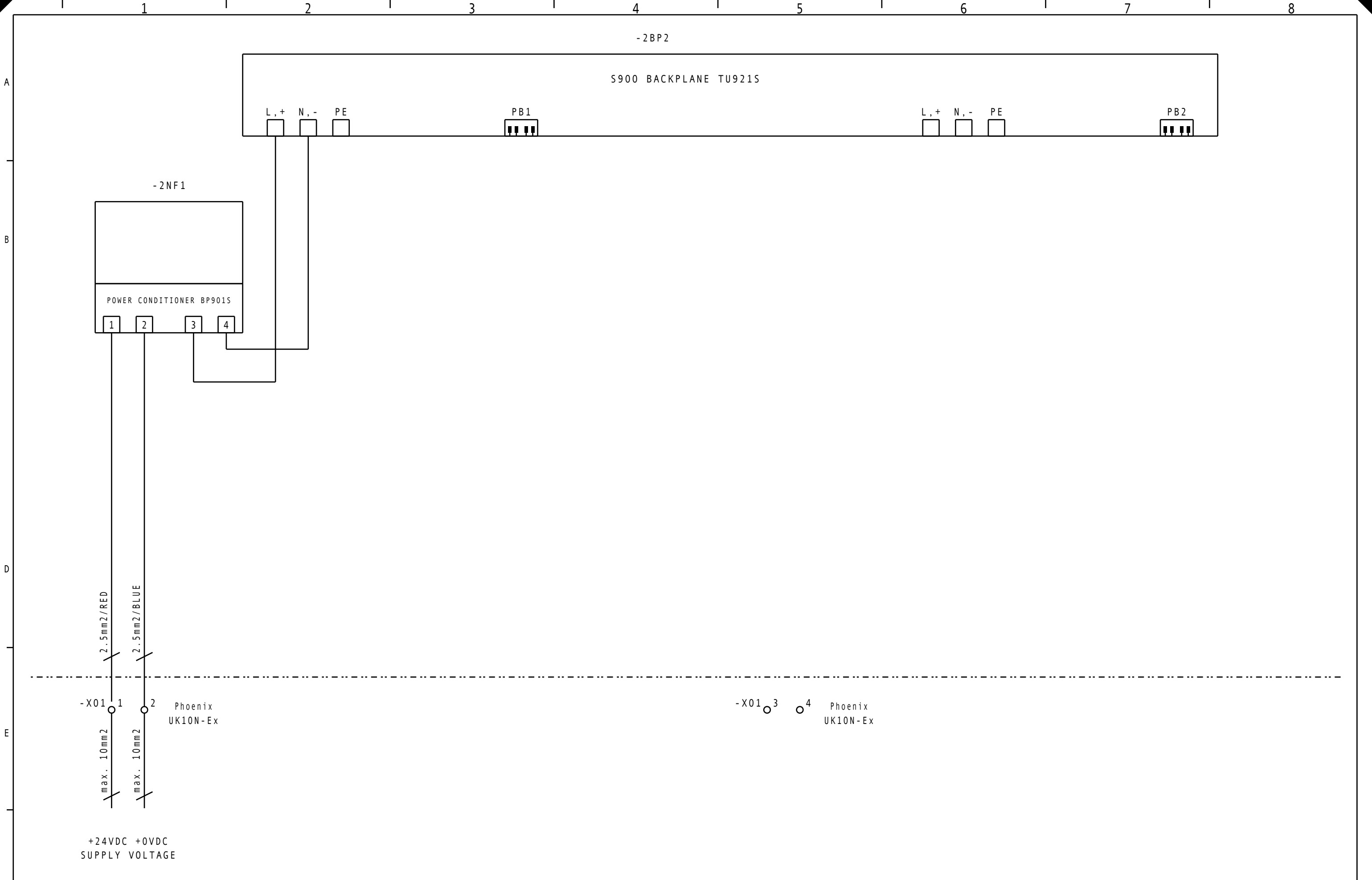
Copyright by ABB AUTOMATION PRODUCTS

Achtung:
 Diese Technische Dokumentation ist urheberrechtlich geschützt. Die Übersetzung, sowie die Vervielfältigung und Verbreitung in jeglicher Form - auch als Bearbeitung oder in Auszügen - insbesondere als Nachdruck, photomechanische oder elektronische Wiedergabe oder in Form von Speicherung in Datenverarbeitungsanlagen oder Datennetzen ohne Genehmigung des Rechteinhabers sind untersagt und werden

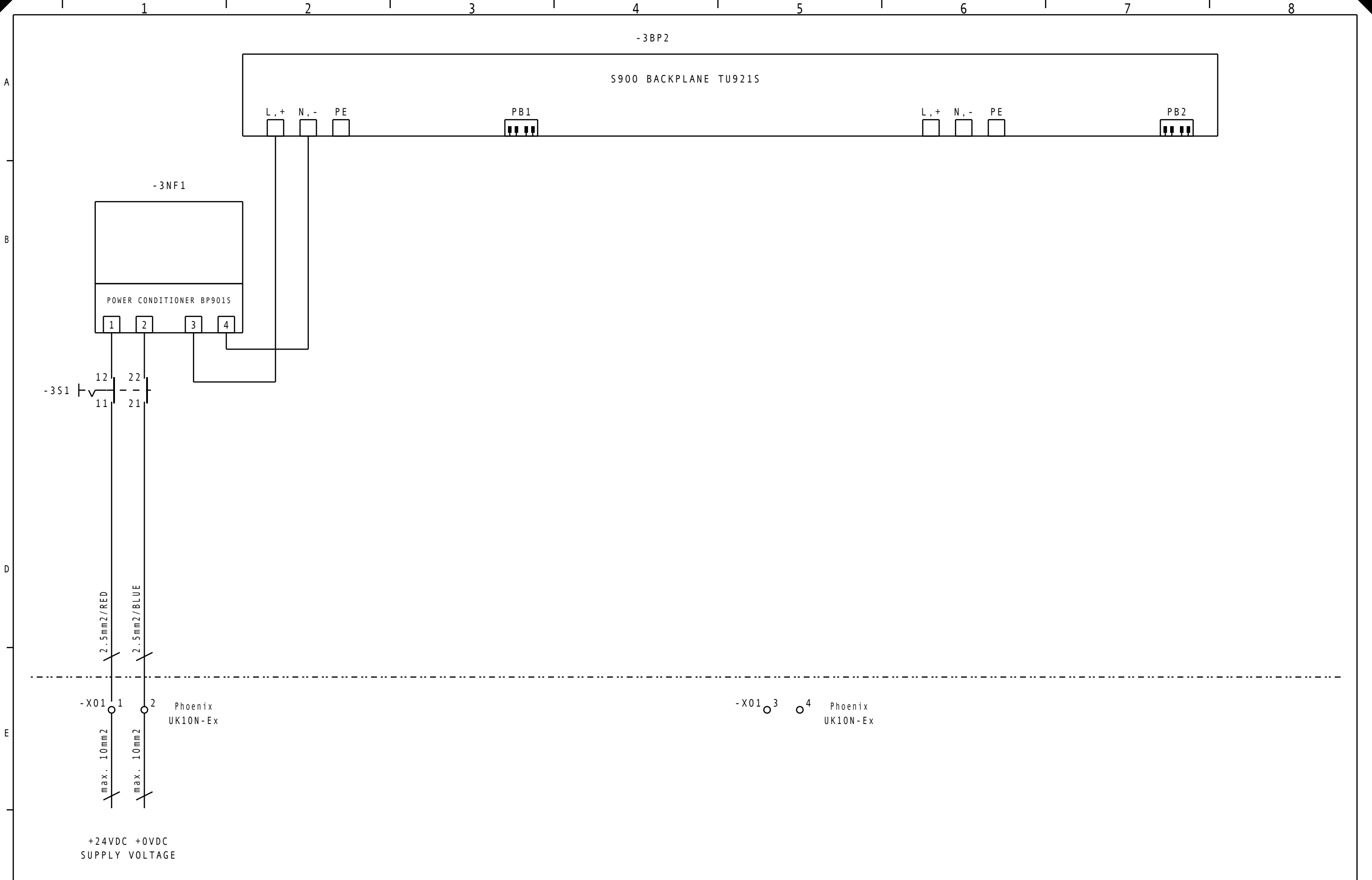
Copyright by ABB AUTOMATION PRODUCTS

Attention:
 This technical documentation is protected by copyright. Translating, photocopying and disseminating it in any form whatsoever - even editings or excerpts thereof - especially as reprint, photomechanical or electronic reproduction or storage on data processing systems or networks is not allowed without the permission of the copyright owner and non-compliance will lead to both civil and criminal prosecution.

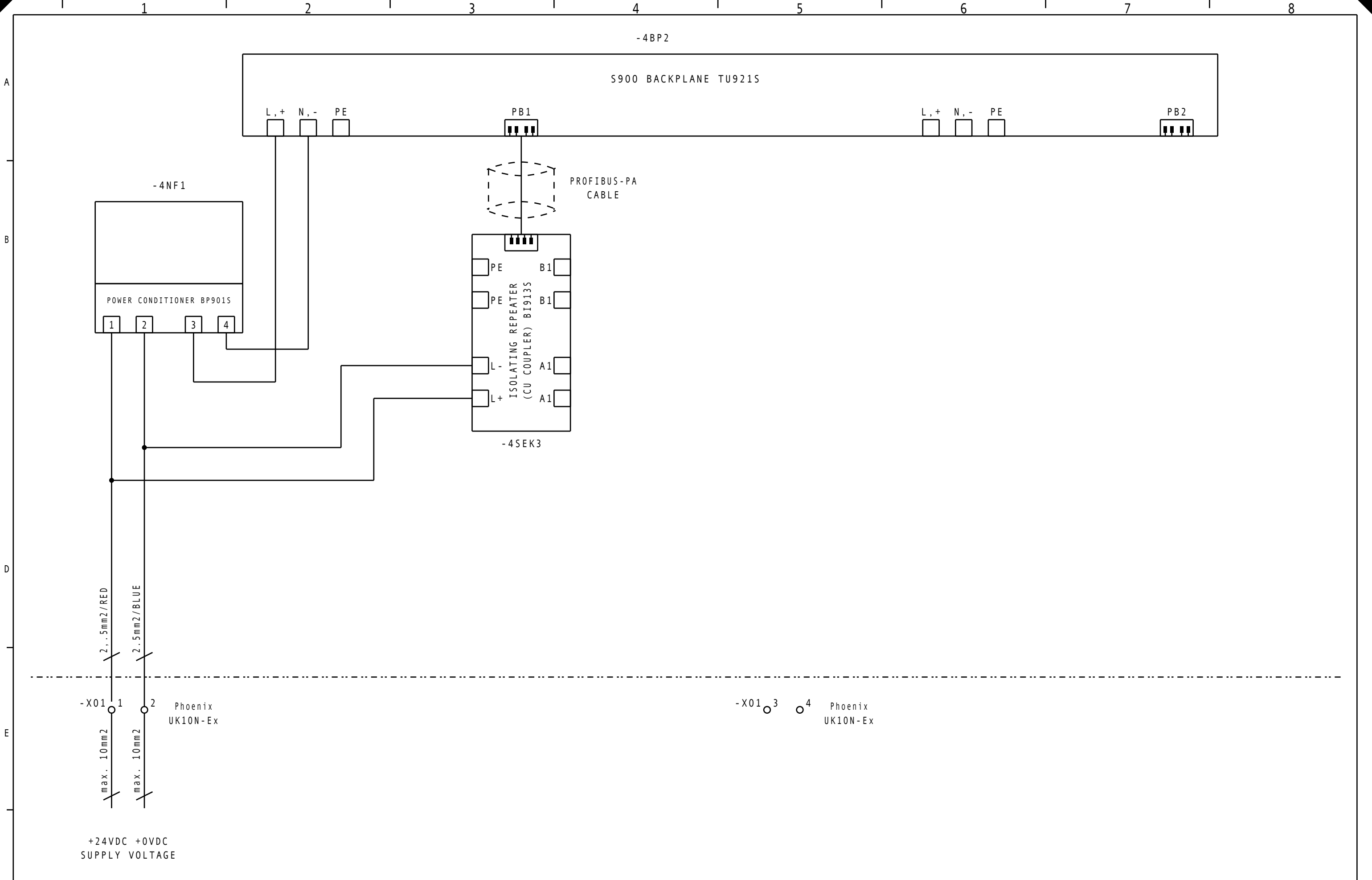
F	a	Ordering Matrix	04.11.03	Schulz			S900 IN FIELD HOUSING	AUTOMATION PRODUCTS Borsigstrasse 2, D - 63755 Alzenau © COPYRIGHT BY ABB AUTOMATION PRODUCTS	COVER SHEET FH680S-0XXX	PROJECT S900 IN FIELD HOUSING	A2	1	
	b				DATE	13.03.2003	600x800x300 mm (WxHxD)						
	c				DRAWN	Schulz							
	d				COORD.								
DETAILS OF REVISION		DATE	NAME	CHECKED	ORIG.	REPL.			PURCHASE ORDER No.:				



F	a	Ordering Matrix	04.11.03	Schulz		S900 IN FIELD HOUSING	ABB AUTOMATION PRODUCTS	FH680S-0100		A2	2
	b				DATE	20.02.2003					
	c				DRAWN	Schulz					
	d				COORD.						
	DETAILS OF REVISION		DATE	NAME	CHECKED	ORIG.	REPL.	PROJECT		PURCHASE ORDER No.:	
								S900 IN FIELD HOUSING			
	© COPYRIGHT BY ABB AUTOMATION PRODUCTS										

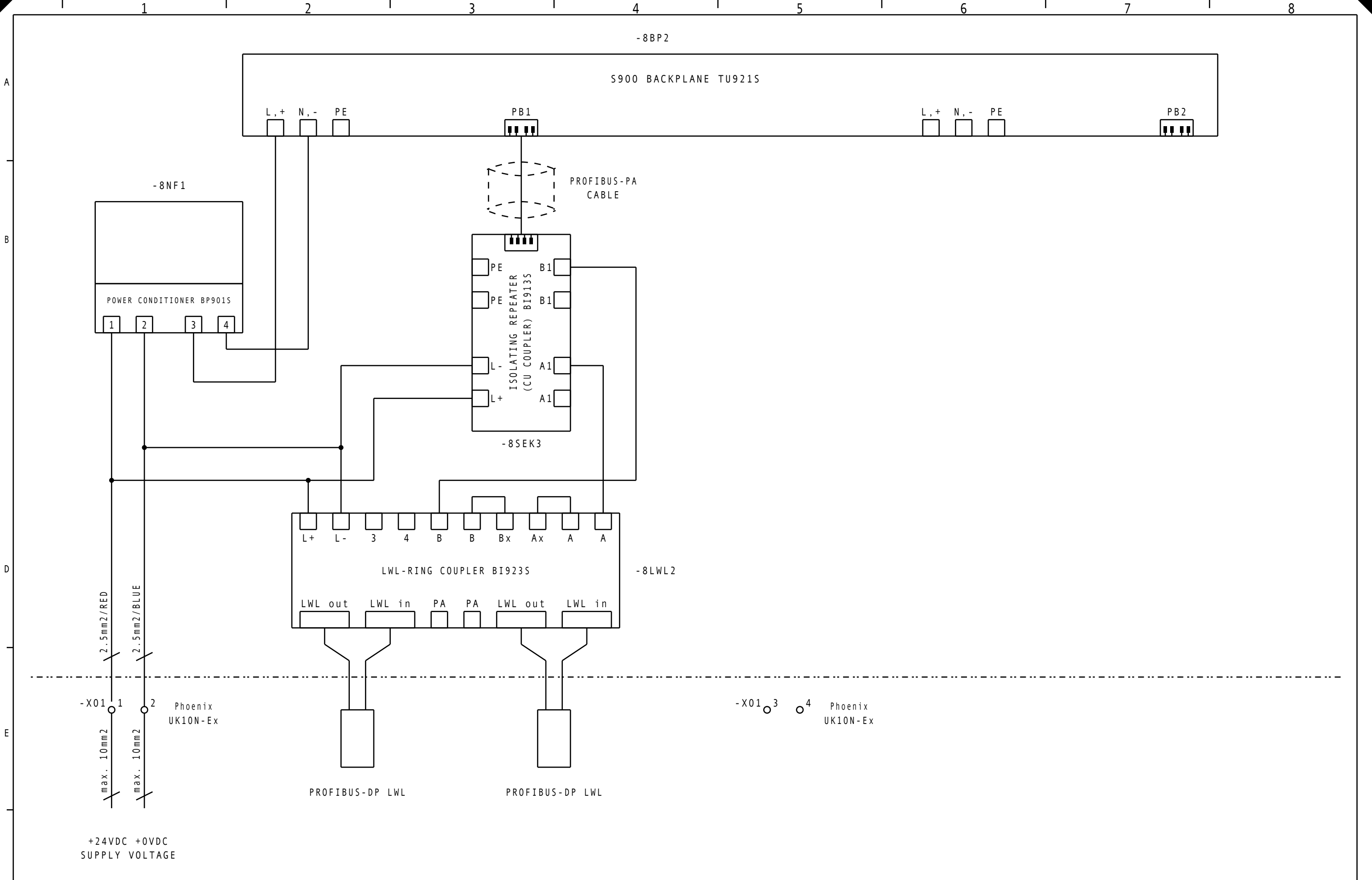


F	a	Ordering Matrix	04.11.03	Schulz		S900 IN FIELD HOUSING 600x800x300 mm (WxHxD)	ABB AUTOMATION PRODUCTS FH680S-0110 Borsigstrasse 2, D - 63755 Alzenau	PROJECT S900 IN FIELD HOUSING	A2		3	
	b				DATE				20.02.2003			
	c				DRAWN				Schulz			
	d				COORD.							
		DETAILS OF REVISION	DATE	NAME	CHECKED	ORIG.	REPL.					
							© COPYRIGHT BY ABB AUTOMATION PRODUCTS		PURCHASE ORDER No.:			

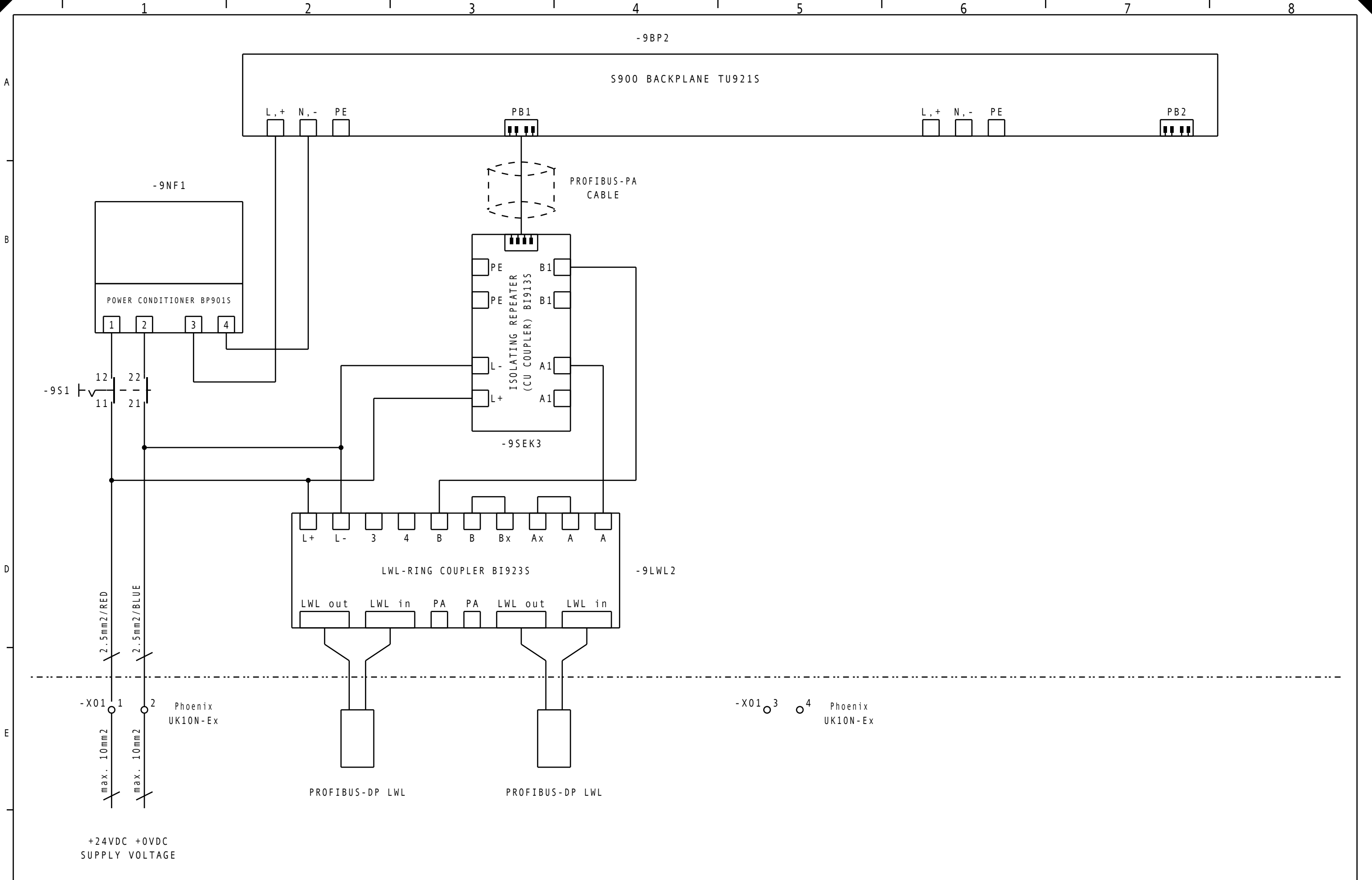


F	a				S900 IN FIELD HOUSING	ABB AUTOMATION PRODUCTS Borsigstrasse 2, D - 63755 Alzenau	FH680S-0101	PROJECT S900 IN FIELD HOUSING	A2	4
	b		DATE	04.11.2003						
	c		DRAWN	Schulz						
	d		COORD.							
	DETAILS OF REVISION	DATE	NAME	CHECKED	ORIG.	REPL.		PURCHASE ORDER No.:		

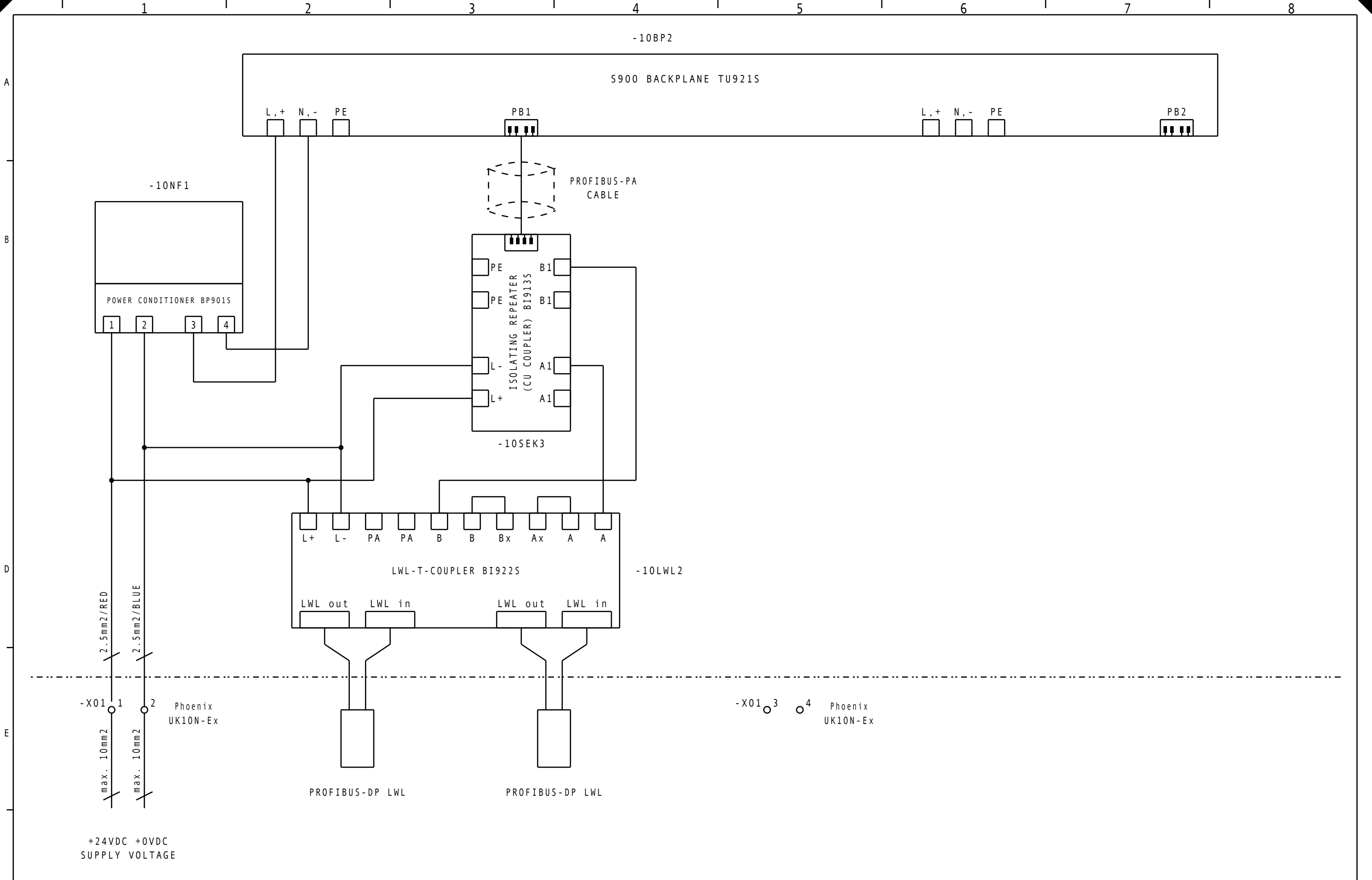
© COPYRIGHT BY ABB AUTOMATION PRODUCTS



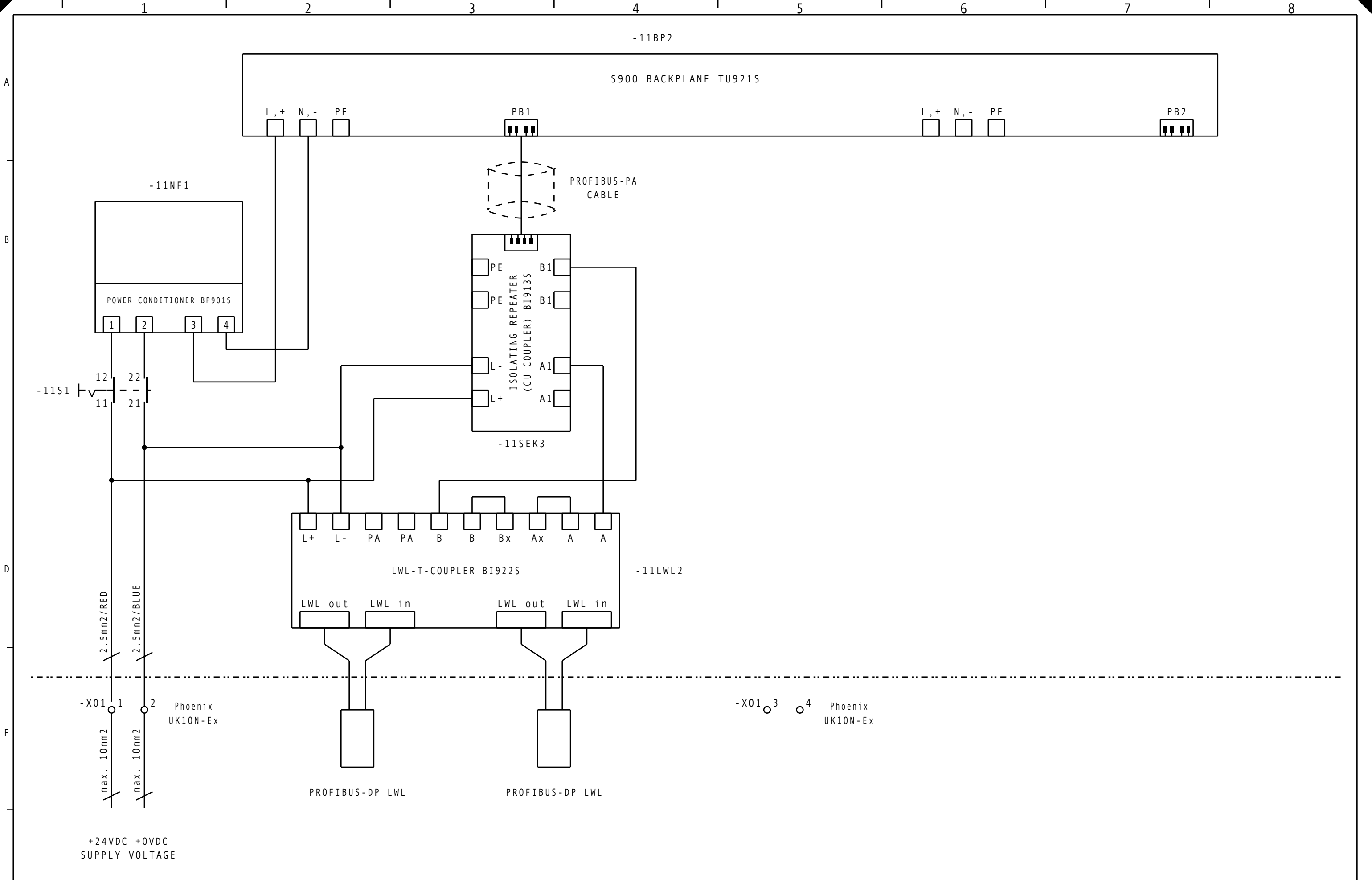
F	a				S900 IN FIELD HOUSING 600x800x300 mm (WxHxD)	ABB AUTOMATION PRODUCTS FH680S-0105 Borsigstrasse 2, D - 63755 Alzenau	PROJECT S900 IN FIELD HOUSING	A2	8
	b		DATE	04.11.2003					
	c		DRAWN	Schulz					
	d		COORD.						
	DETAILS OF REVISION	DATE	NAME	CHECKED	ORIG.	REPL.	PURCHASE ORDER No.:		
						© COPYRIGHT BY ABB AUTOMATION PRODUCTS			



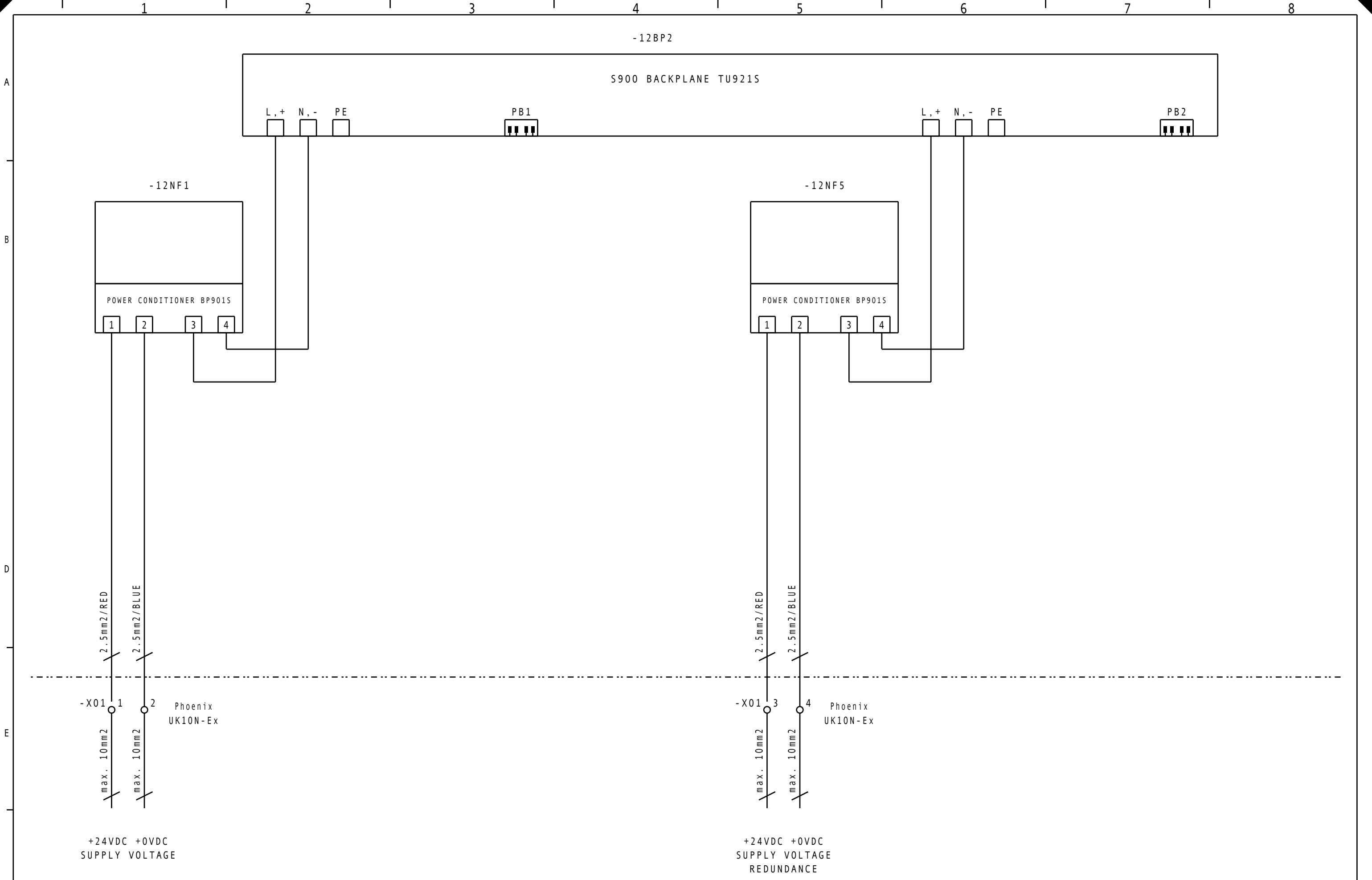
a	Ordering Matrix	04.11.03	Schulz			S900 IN FIELD HOUSING	ABB AUTOMATION PRODUCTS Borsigstrasse 2, D - 63755 Alzenau © COPYRIGHT BY ABB AUTOMATION PRODUCTS	FH680S-0115	PROJECT S900 IN FIELD HOUSING	A2	9	
b			DATE	20.02.2003	600x800x300 mm (WxHxD)							
c			DRAWN	Schulz								
d			COORD.									
DETAILS OF REVISION		DATE	NAME	CHECKED		ORIG.	REPL.		PURCHASE ORDER No.:			



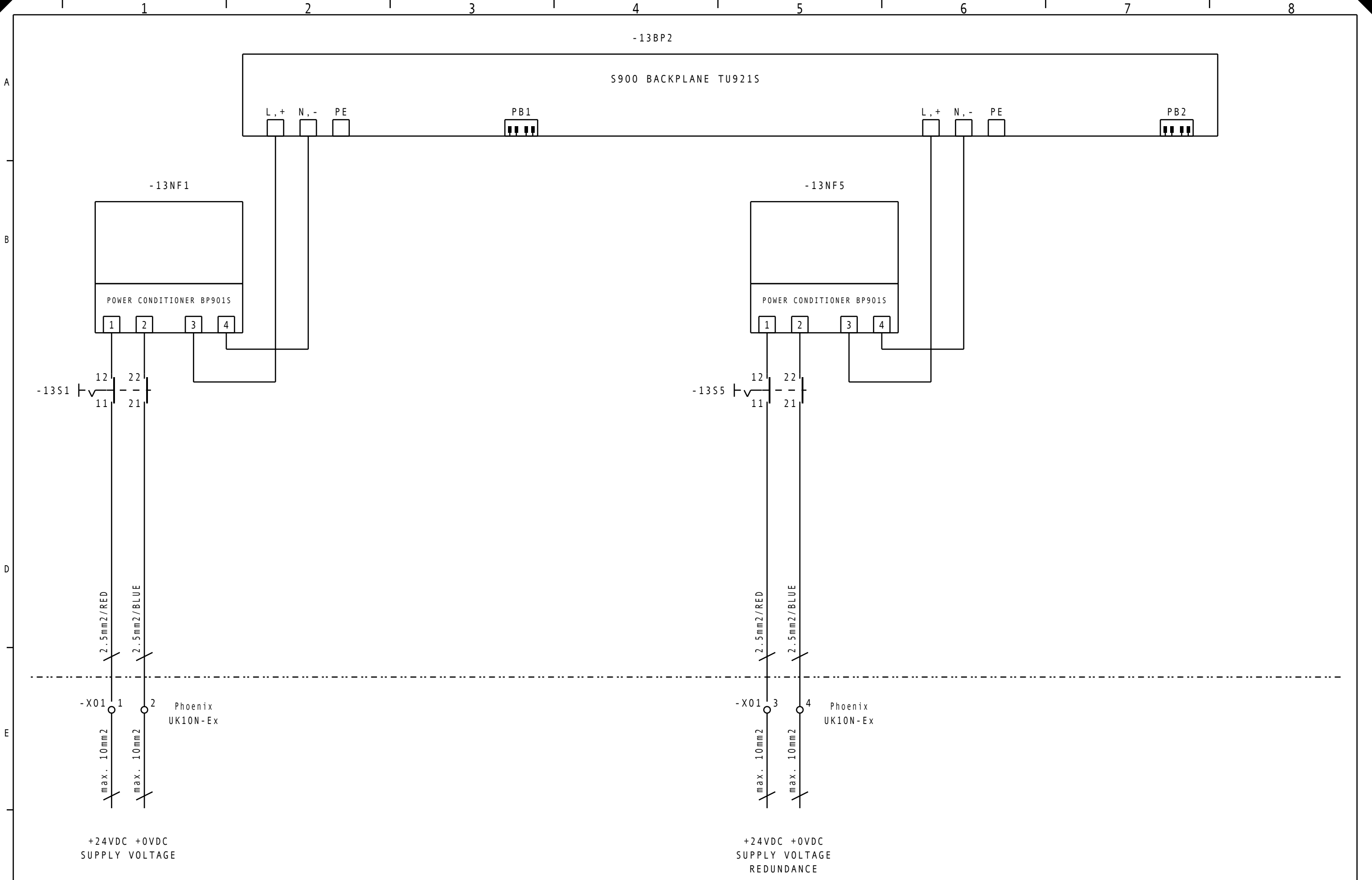
a					S900 IN FIELD HOUSING	ABB AUTOMATION PRODUCTS Borsigstrasse 2, D - 63755 Alzenau	FH680S-0107	PROJECT S900 IN FIELD HOUSING	A2	10
b			DATE	04.11.2003						
c			DRAWN	Schulz						
d			COORD.							
DETAILS OF REVISION		DATE	NAME	CHECKED	ORIG.	REPL.	© COPYRIGHT BY ABB AUTOMATION PRODUCTS		PURCHASE ORDER No.:	



F	a	Ordering Matrix	04.11.03	Schulz		S900 IN FIELD HOUSING 600x800x300 mm (WxHxD)	ABB AUTOMATION PRODUCTS FH680S-0117 Borsigstrasse 2, D - 63755 Alzenau	PROJECT S900 IN FIELD HOUSING	A2	11	
	b				DATE				20.02.2003		
	c				DRAWN				Schulz		
	d				COORD.						
		DETAILS OF REVISION	DATE	NAME	CHECKED	ORIG.	REPL.			PURCHASE ORDER No.:	
© COPYRIGHT BY ABB AUTOMATION PRODUCTS											

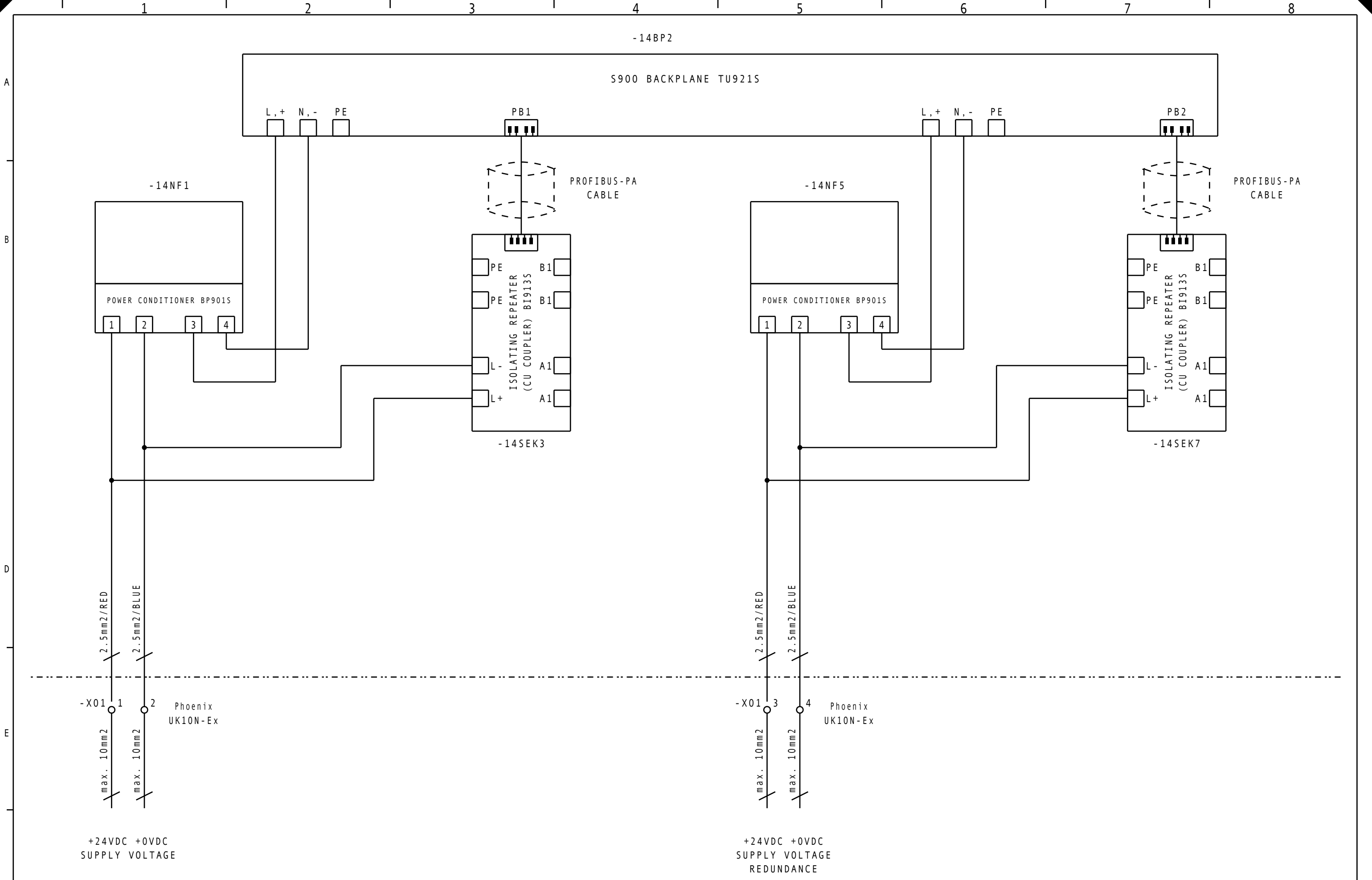


F	a	Ordering Matrix	04.11.03	Schulz		S900 IN FIELD HOUSING 600x800x300 mm (WxHxD)	ABB AUTOMATION PRODUCTS FH6805-0200 Borsigstrasse 2, D - 63755 Alzenau	A2	12
	b			DATE	20.02.2003				
	c			DRAWN	Schulz				
	d			COORD.					
		DETAILS OF REVISION	DATE	NAME	CHECKED	ORIG.	REPL.	PROJECT	PURCHASE ORDER No.:
								S900 IN FIELD HOUSING	



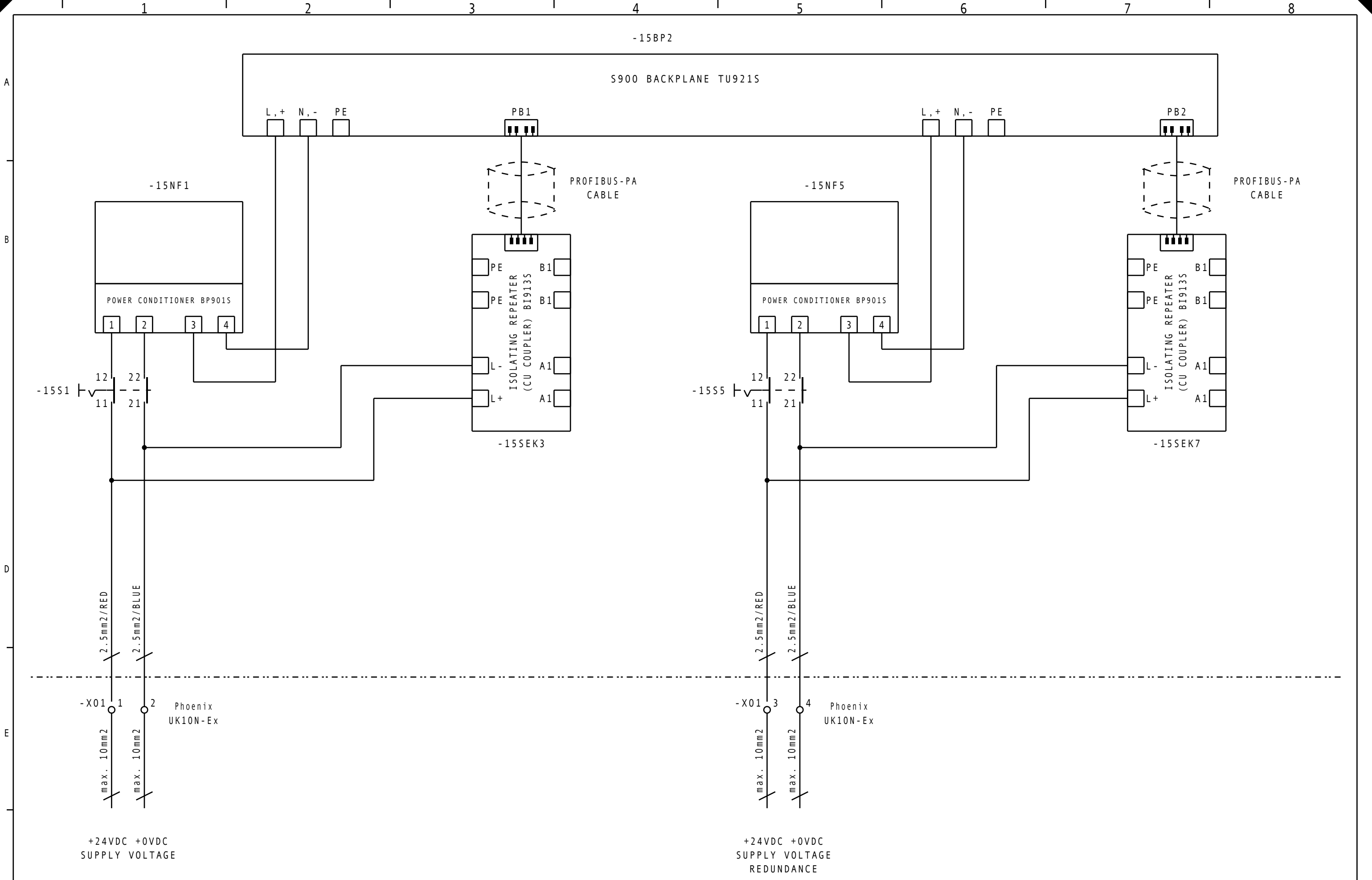
F	a	Ordering Matrix	04.11.03	Schulz		S900 IN FIELD HOUSING 600x800x300 mm (WxHxD)	ABB AUTOMATION PRODUCTS FH6805-0220 Borsigstrasse 2, D - 63755 Alzenau	PROJECT S900 IN FIELD HOUSING	A2	13	
	b				DATE				20.02.2003		
	c				DRAWN				Schulz		
	d				COORD.						
		DETAILS OF REVISION	DATE	NAME	CHECKED	ORIG.	REPL.		PURCHASE ORDER No.:		

ABB AUTOMATION PRODUCTS
FH6805-0220
Borsigstrasse 2, D - 63755 Alzenau
© COPYRIGHT BY ABB AUTOMATION PRODUCTS

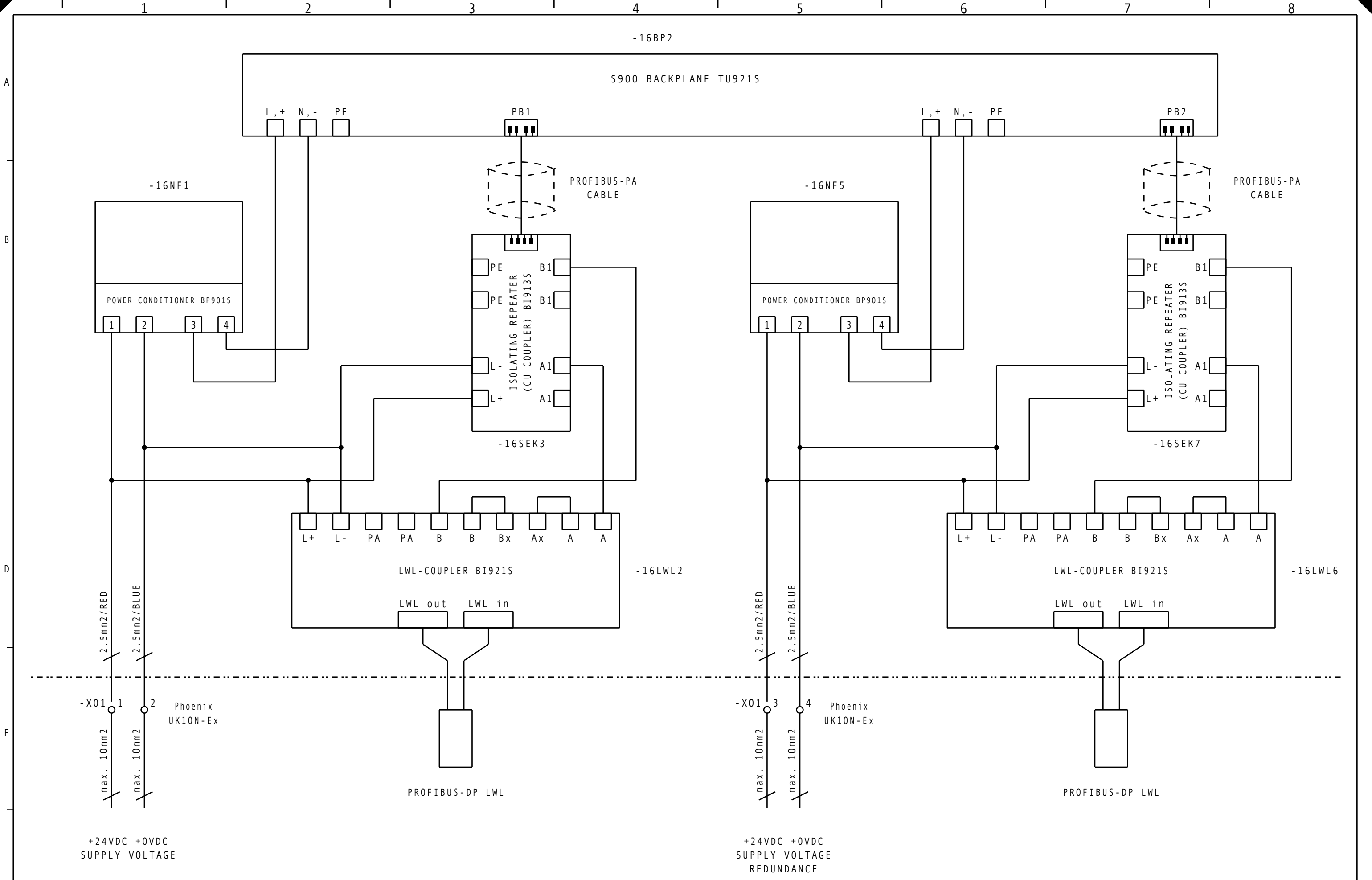


F	a				S900 IN FIELD HOUSING 600x800x300 mm (WxHxD)	ABB AUTOMATION PRODUCTS FH6805-0202 Borsigstrasse 2, D - 63755 Alzenau	PROJECT S900 IN FIELD HOUSING	A2	PURCHASE ORDER No.:	14
	b		DATE	04.11.2003						
	c		DRAWN	Schulz						
	d		COORD.							
	DETAILS OF REVISION	DATE	NAME	CHECKED	ORIG.	REPL.				

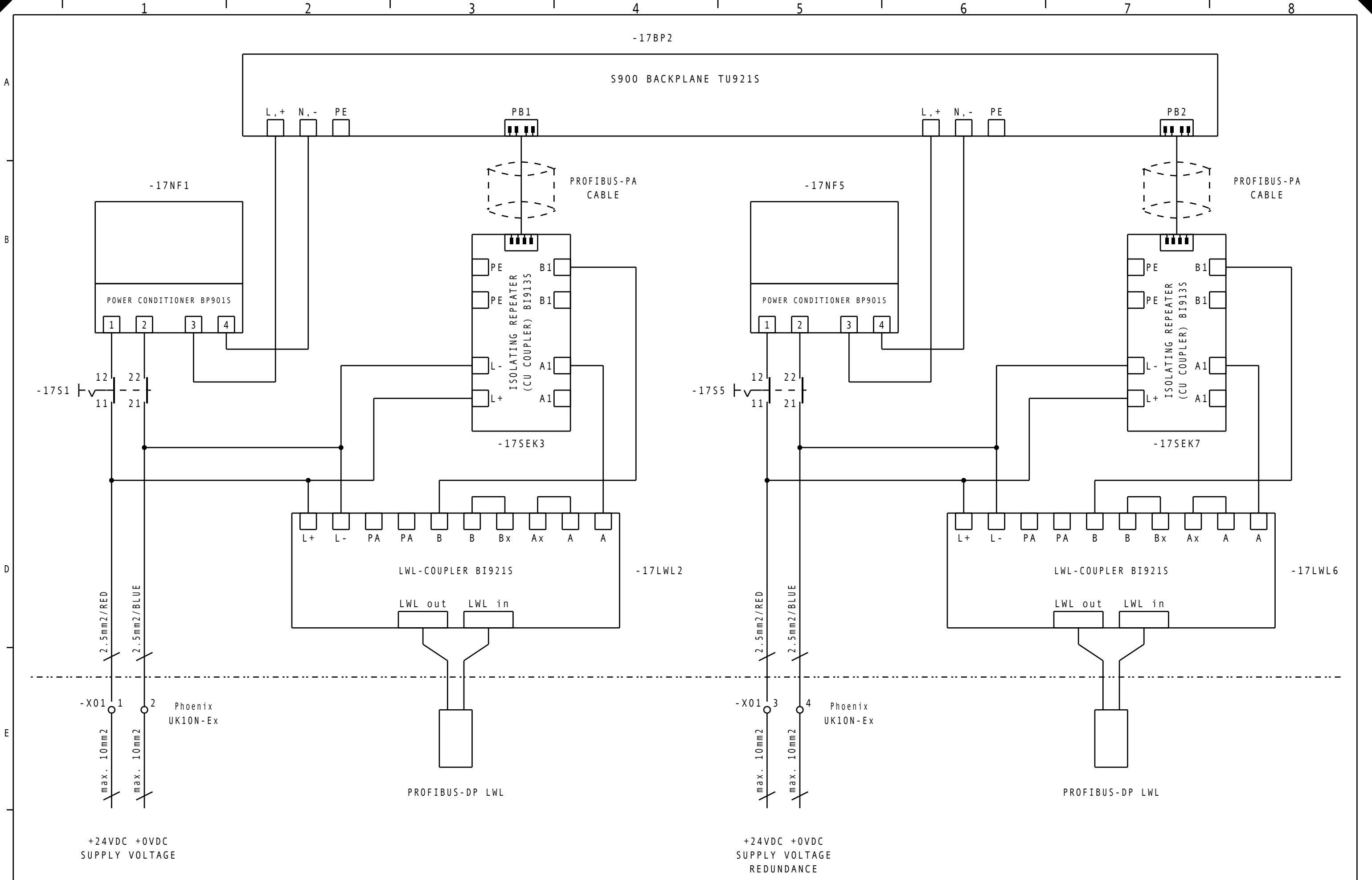
© COPYRIGHT BY ABB AUTOMATION PRODUCTS



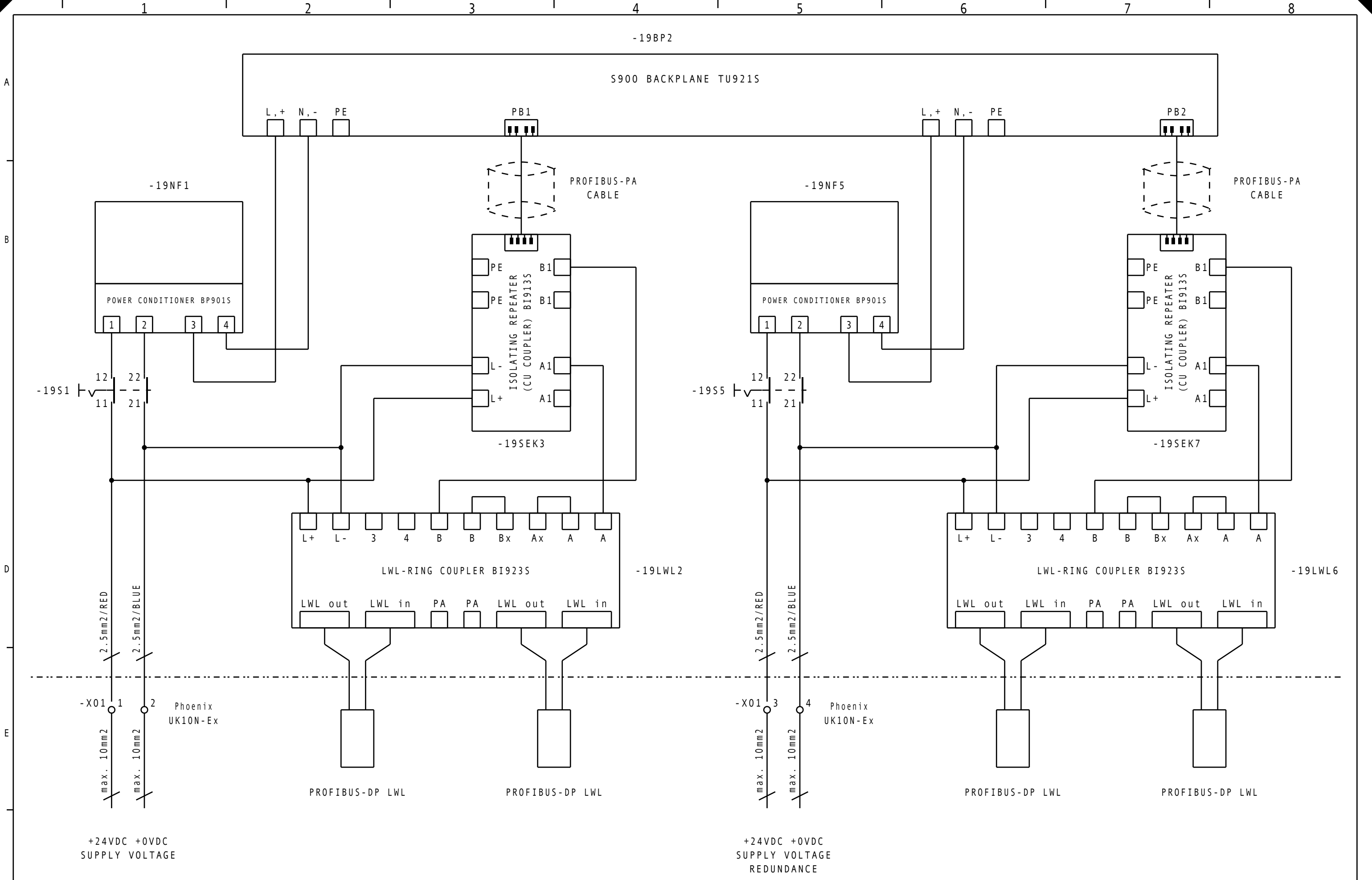
F	a	Ordering Matrix	04.11.03	Schulz		S900 IN FIELD HOUSING 600x800x300 mm (WxHxD)	ABB AUTOMATION PRODUCTS FH6805-0222 Borsigstrasse 2, D - 63755 Alzenau	PROJECT S900 IN FIELD HOUSING	A2	15	
	b				DATE				20.02.2003		
	c				DRAWN				Schulz		
	d				COORD.						
		DETAILS OF REVISION	DATE	NAME	CHECKED	ORIG.	REPL.		PURCHASE ORDER No.:		
© COPYRIGHT BY ABB AUTOMATION PRODUCTS											



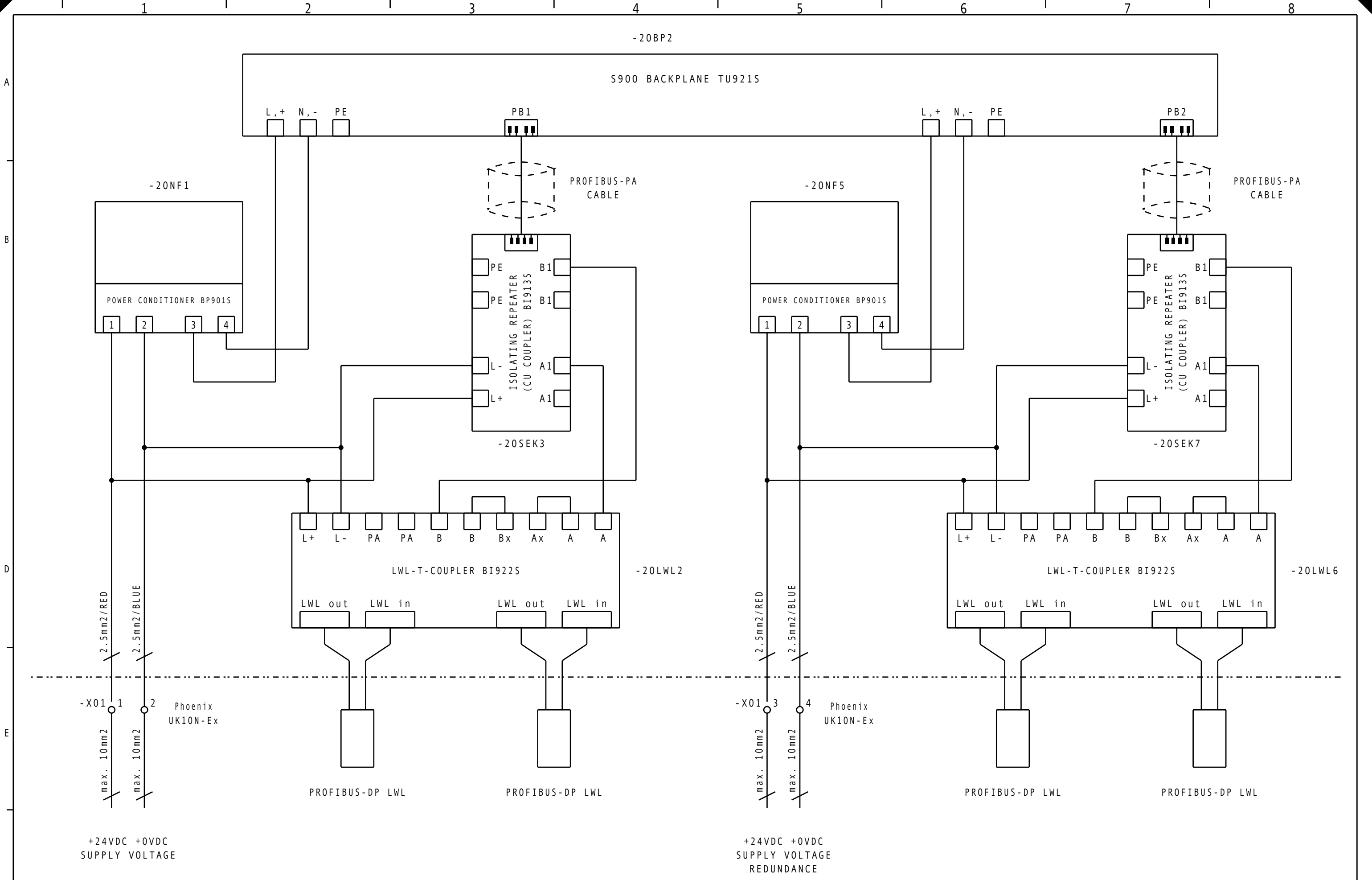
F	a				S900 IN FIELD HOUSING 600x800x300 mm (WxHxD)	ABB AUTOMATION PRODUCTS FH6805-0204 Borsigstrasse 2, D - 63755 Alzenau	PROJECT S900 IN FIELD HOUSING	A2	16
	b		DATE	04.11.2003					
	c		DRAWN	Schulz					
	d		COORD.						
	DETAILS OF REVISION	DATE	NAME	CHECKED	ORIG.	REPL.		PURCHASE ORDER No.:	
© COPYRIGHT BY ABB AUTOMATION PRODUCTS									



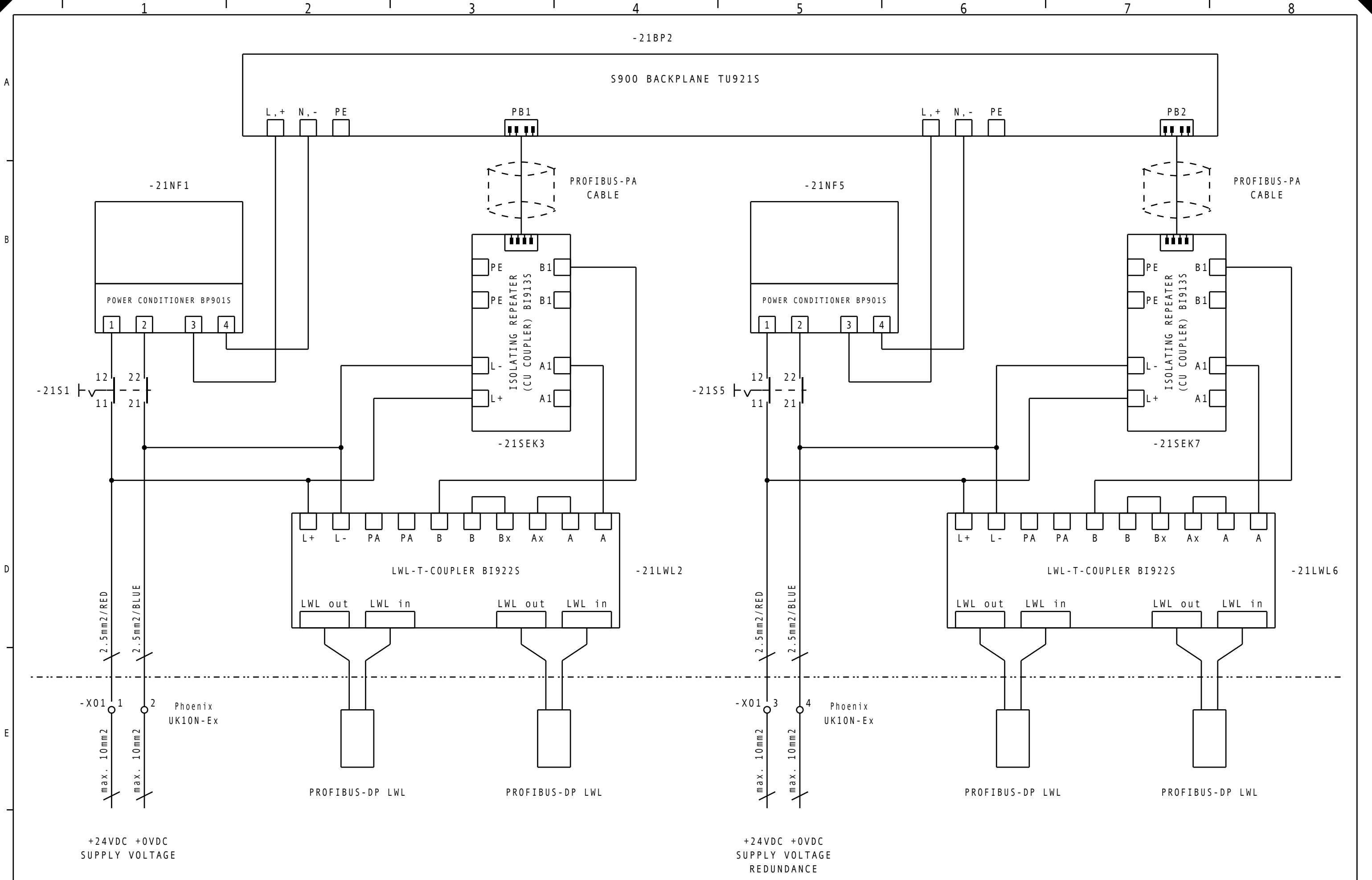
F	a	Ordering Matrix	04.11.03	Schulz		S900 IN FIELD HOUSING 600x800x300 mm (WxHxD)	ABB AUTOMATION PRODUCTS FH6805-0224 Borsigstrasse 2, D - 63755 Alzenau	PROJECT S900 IN FIELD HOUSING	A2	17		
	b				DATE				20.02.2003			
	c				DRAWN				Schulz			
	d				COORD.							
		DETAILS OF REVISION	DATE	NAME	CHECKED	ORIG.	REPL.		PURCHASE ORDER No.:			
							© COPYRIGHT BY ABB AUTOMATION PRODUCTS					



F	a	Ordering Matrix	04.11.03	Schulz		S900 IN FIELD HOUSING 600x800x300 mm (WxHxD)	ABB AUTOMATION PRODUCTS FH6805-0226 Borsigstrasse 2, D - 63755 Alzenau	PROJECT S900 IN FIELD HOUSING	A2	19	
	b				DATE				20.02.2003		
	c				DRAWN				Schulz		
	d				COORD.						
		DETAILS OF REVISION	DATE	NAME	CHECKED	ORIG.	REPL.		PURCHASE ORDER No.:		
© COPYRIGHT BY ABB AUTOMATION PRODUCTS											



F	a				S900 IN FIELD HOUSING	ABB AUTOMATION PRODUCTS Borsigstrasse 2, D - 63755 Alzenau FH6805-0208 © COPYRIGHT BY ABB AUTOMATION PRODUCTS	PROJECT S900 IN FIELD HOUSING	A2	20
	b		DATE	04.11.2003	600x800x300 mm (WxHxD)				
	c		DRAWN	Schulz					
	d		COORD.						
	DETAILS OF REVISION	DATE	NAME	CHECKED	ORIG.	REPL.		PURCHASE ORDER No.:	



F	a	Ordering Matrix	04.11.03	Schulz		S900 IN FIELD HOUSING 600x800x300 mm (WxHxD)	ABB AUTOMATION PRODUCTS FH6805-0228 Borsigstrasse 2, D - 63755 Alzenau	PROJECT S900 IN FIELD HOUSING	A2	21		
	b				DATE				20.02.2003			
	c				DRAWN				20.02.2003			
	d				COORD.							
		DETAILS OF REVISION	DATE	NAME	CHECKED	ORIG.	REPL.		PURCHASE ORDER No.:			
© COPYRIGHT BY ABB AUTOMATION PRODUCTS												



Printed in Germany
Copyright © 2003 by ABB. All Rights Reserved
® Registered Trademark of ABB.
™ Trademark of ABB.

<http://www.abb.com>

ABB Automation Products GmbH
Borsigstrasse 2, D-63755 Alzenau
Phone +49(0)6023 92-0, Fax +49(0)6023 92-3430