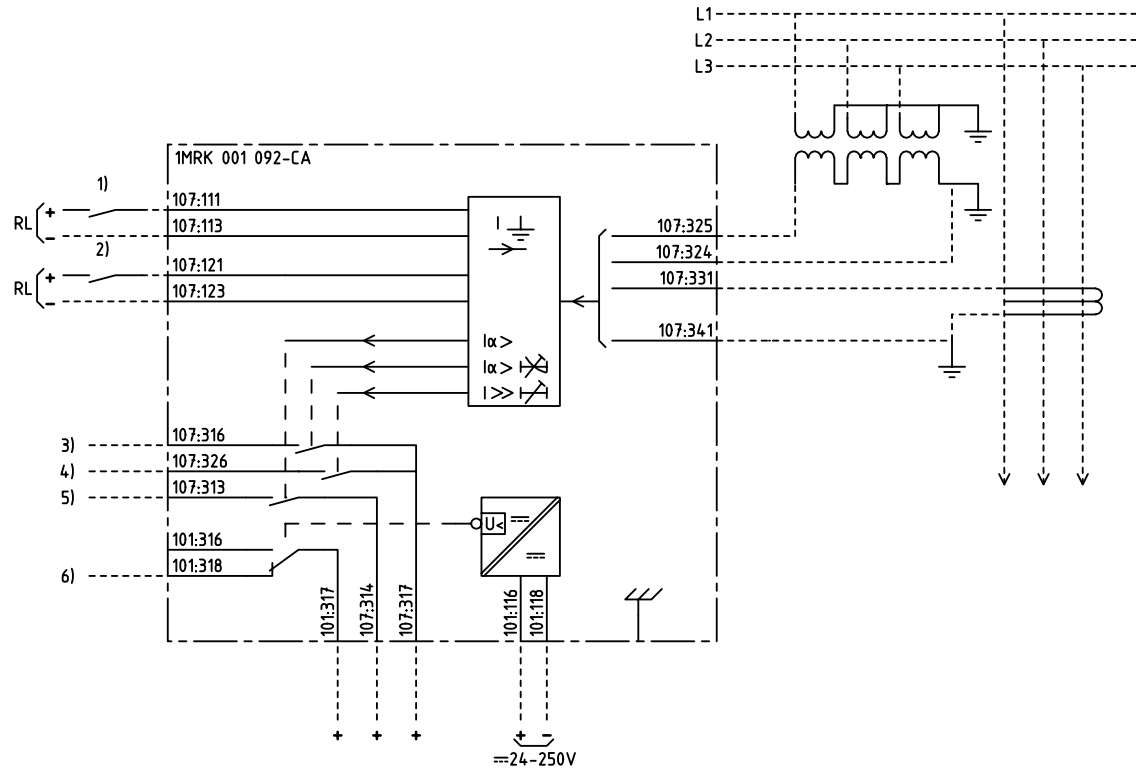
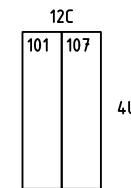


We reserve all rights in this document and in the information contained therein. Reproduction, use for other than intended purposes, without the written authority of ABB Automation Technologies AB is strictly forbidden. © ABB Automation Technologies AB



DIRECTIONAL EARTH FAULT
PROTECTION, DELAYED
RIKTAT JORDFELSSKYDD, FÖRDRÖJT



101 RXTUG 22H
107 RXPDK 23H

- 1) BLOCKING/ENABLING ONLY OF $I_{\alpha>}$ AND $I_{>>}$
BLOCKERING/FRIGIVNING ENDAST AV $I_{\alpha>}$ OCH $I_{>>}$
- 2) RESETTING OF INDICATION
ÅTERSTÄLLNING AV INDIKERING
- 3) DIRECTIONAL EARTH FAULT, TRIPPING
RIKTAT JORDFEL, UTLÖSNING
- 4) EARTH FAULT, TRIPPING
JORDFEL, UTLÖSNING
- 5) DIRECTIONAL EARTH FAULT, START
RIKTAT JORDFEL, START
- 6) LOSS OF AUXILIARY VOLTAGE
BORTFALL AV HJÄLPSPÄNNING

Customer drw no	Prep. PTUA/ - H Raza/JE 1998-10-30	Connection Diagram	Conf. sh/ No of sh
	Appr. PTUA/ Roger Karlsson 1999-02-02		
	Resp. dept PTUA/ PTUA/TPTD	Document number	Lang.
Based on	ABB ABB Automation Technologies	1MRK001092-CAA	en
		Rev.	Sheet
		-	1

Document status: Approved