

Engineering Services

ABB delivers, installs and engineers your *MOD 300 Extended Automation Program*. Unlike fully automated conversions, this program offers detailed analysis and conversion services executed by database specialists. This can translate to a higher degree of acceptance of your new platform – and that can mean lower training costs and faster ramp-up schedules. ABB's **Engineering Services** include (not a complete list):

- One-week on-site consultation assistance with customer
 - Add RTAB and install software
 - Move database to AdvBuild version 3
 - Add, if necessary for future, nodes, routing, functionality
 - Check Math FCMs
 - Compile and install, resolve errors with customer
 - Move environments, graphics, PC Configuration, custom memory pools
 - Move TCL, compile, link, download
 - Move TLL
- Verification of the entire conversion

ABB's *MOD 300 Extended Automation Program*

A Summary

– Engineering Evolution allows you to benefit from:

- **AdvBuild Version 3 and MOD 300 Engineering Displays** – to increase your engineering efficiency
- **Asset Optimization** – to drive plant performance and ROI
- **SoftCare** - for two years of peace of mind
- **Certified ABB Engineering** – to ensure a complete and thorough upgrade

MOD 300 Extended Automation Programs

Engineering Evolution



To obtain additional information regarding our complete service portfolio, visit us on the Internet: www.abb.com

Or call: **1-800-HELP-365**

Industrial IT

Industrial IT is the ABB vision for real-time integration of automation, information and collaborative business systems. Our compatible enterprise building blocks, single architecture and domain industry expertise are helping customers around the globe to achieve greater productivity, return on investment and shareholder value.

ABB's portfolio of service agreement solutions complement the Industrial IT strategy by delivering improved process performance and cost savings.

a special upgrade offer for MOD 300 users



ABB Inc.
29801 Euclid Avenue
Wickliffe, OH 44092 USA
Telephone 800-HELP-365
Telefax 440-585-5087

3BUS092081R001 5M Litho in USA 302

Copyright © 2003 by ABB Inc. All rights to trademarks reside with their respective owners.

Specifications subject to change without notice. Pictures, schematics and other graphics contained herein are published for illustration purposes only and do not represent product configurations or functionality. User documentation accompanying the product is the exclusive source for functionality descriptions.



How Can You -

- Justify the cost of updating your automation system?
- Decrease downtime and lower production costs while improving quality and productivity?
- Sort through the choices to put together the best solution for your needs?
- Prepare for PC operating system platform changes?

While others talk about engineering and asset management improvement but provide only basic

feedback tools, ABB delivers a complete solution. The *MOD 300 Extended Automation Program* includes:

- Upgrade to AdvaBuild version 3 - the latest engineering efficiency
- New MOD 300 Engineering Displays
- The power of real-time asset optimization
- Tremendous value - two years of ABB software upgrade protection - guaranteed
- Certified ABB Engineering to ensure a complete and thorough upgrade

AdvaBuild Version 3

Helps improve your engineering efficiency.

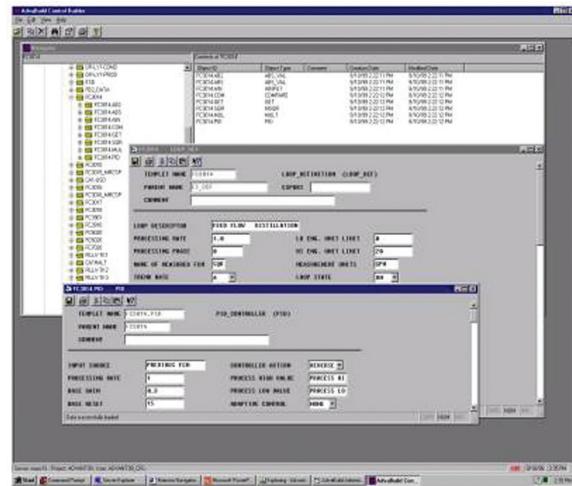
Improved Database Configuration:

- View and navigate the database, through a Microsoft-based, object oriented tree structure
- Copy and paste multiple loops
- Scroll through templates instead of going to different pages

Improve Development:

- Easily check and correct syntax errors
- Significantly faster compile and install times
- Drop down pick lists
- Multiple windows
- Revision control of source code for TCL and TLL
- Journaling function for better tracking of changes in the Control Builder
- Includes MOD 300 Engineering Displays

AdvaBuild version 3 updates your system to Microsoft Windows navigation with simple copy/paste drag/drop technology based on an enhanced/open data model. It provides direct attribute selection, faster compile/install times and allows you to view multiple information on single, scrollable pages with context menus. It also includes improved transition file usage with new ASCII format, improved backup/restore functionality and journaling and loop annotation features.



AdvaBuild Control Builder, Loop Definition and PID Displays

The MOD 300 Engineering Display software allows the Engineer runtime display access via the MOD 300 Distributed Control Network (DCN.) It provides the capability of having engineering display support available with the AdvaBuild configuration software. It also allows complete configuration of the control system, including tuning, setting alarm limits and downloading loops in a dedicated engineering environment. Additionally, the displays provide access to many tags within the MOD 300 system that are not necessary for normal operations. This can reduce the load on the RTDS for installations with MOD 300 Connect.

Optimize^{IT} - Asset Optimization

ABB's Optimize IT **Asset Optimization** provides a real-time Plant-Asset Management (PAM) solution. It allows you to move from costly, reactive, after-the-fact maintenance to *proactive* and *predictive* maintenance practices. Asset Optimization presents real-time production and control data seamlessly, in the proper context, to the personnel who require it. Asset Optimization can increase Overall Equipment Effectiveness (OEE) and reduce cost of asset support.

It offers:

- Continuous and automated monitoring of plant assets for improved performance and reliability
- Predictive identification of process relevant failures
- OPC connectivity for ALL plant assets

With the *MOD 300 Extended Automation Program*, asset triggers can be configured specifically for your system. Additionally, this event monitoring can be programmed to include the ability to receive a page or email on any condition data you specify. Examples of possible triggers include:

- **Motor, Pump and Fan Maintenance:** Know exactly when motor maintenance is necessary based on accumulated run times
- **Analyzer (Field Device) Data Quality:** Report status of critical analyzers - to make certain your field devices are providing correct information
- **Predictive Maintenance Alert:** Measure variables to transmit an alarm such as when a valve is *about* to require maintenance, or has been operated enough times to need a change of seals - to direct your maintenance resources only to the assets requiring them
- **Flow Check:** Measure data to indicate when flows deviate from allowable tolerances - to identify a possible overflow, draining, or leakage abnormality

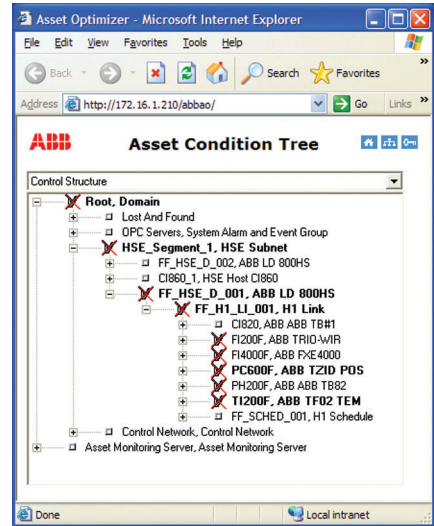
- **Limit Checks:** Assess a sensor that might be affected by process conditions, such as when a specific limit is reached (usage time, pressure, vibration, etc.), indicating that the sensor, screen or filter will require maintenance

- **Runtime Check:** Track runtime for components that deteriorate in operation. Calculations to factor in actual production or pressure conditions can make these checks even smarter

- **XY Profile:** Use this trigger where there is a need to apply a non-linear value that changes with production rate

ABB's Asset Optimization isn't limited to process control or plant equipment. Information technology assets can be monitored as well, including:

- Software - Proper execution, CPU utilization, resource utilization
- Computer hardware - Hard disk utilization, overall resource availability, network usage
- Computer peripherals - Printers (toner, paper), UPS's (battery health)
- Network devices - Switches, routers, firewalls
- Business equipment - Networked PBX's, copiers, faxes
- Any device that supports Simple Network Management Protocol (SNMP)



SoftCare - an incredible value!

SoftCare is ABB's software management program. Enrollment in the program ensures that you will receive upgrades for improvements and enhancements to your ABB software. With the *MOD 300 Extended Automation Program*, you receive **two years** of SoftCare membership. ABB's SoftCare program ensures that you will have access to the latest technical information, field notices, and release notes on your ABB software products via SolutionsBank, ABB's knowledge management subscription service. It enables you to keep ABB's software current, thus increasing productivity and

lowering support costs, particularly when it comes to maintaining compatibility with PC operating system software upgrades, which can occur with alarming frequency.

SoftCare offers:

- Automatic distribution of new ABB software versions
- Access to ABB software patches and product updates via the Web
- Software resource maintainability and predictability