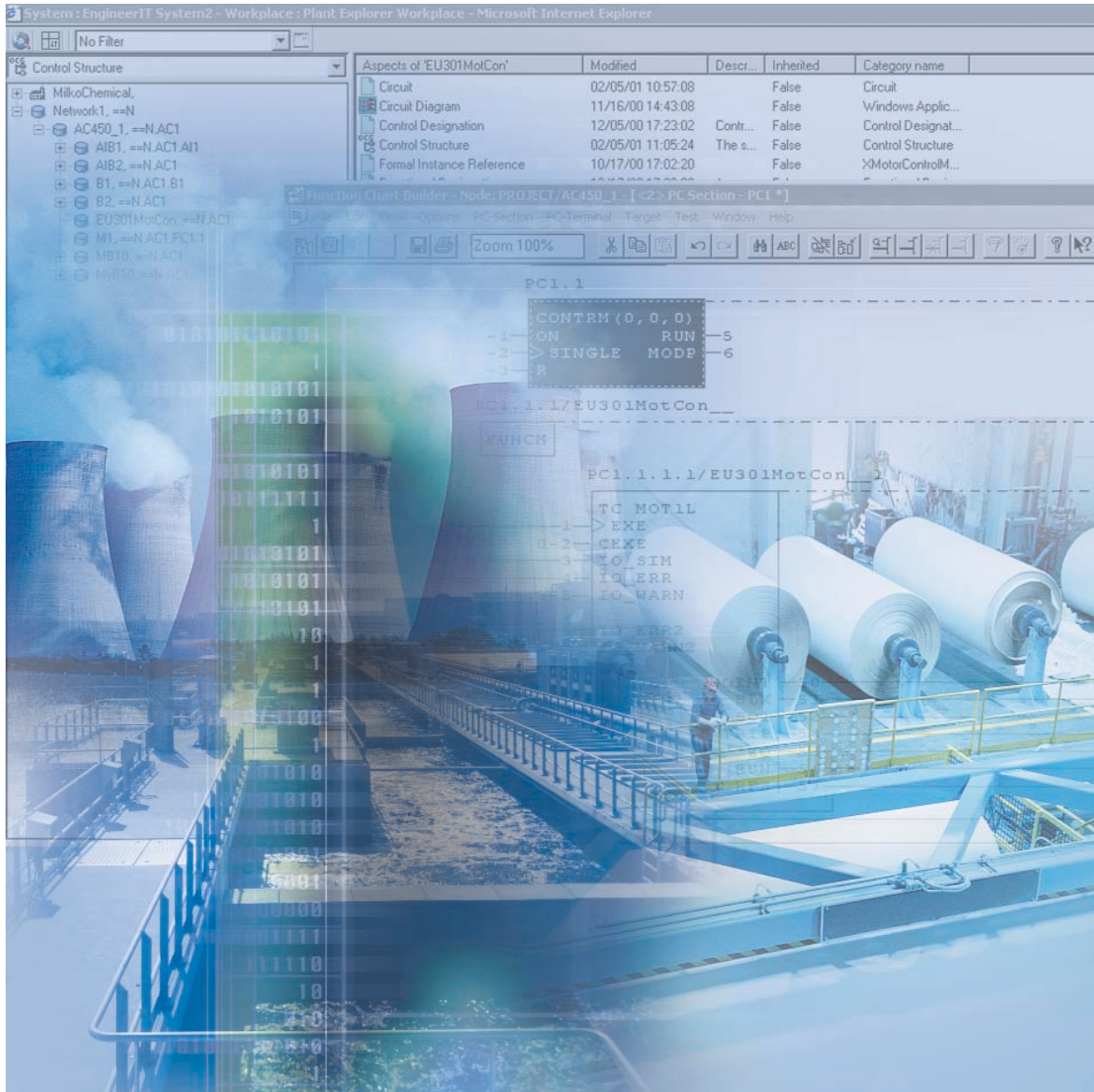


Advant[®] OCS
Open Control System

Control Builder A

The easy way to configure your industrial automation system



Tools that make short work out of configuring and maintaining Advant OCS

Control Builder A provides a full set of tools for application engineering of Advant OCS with Master software. From initial configuring, to in-house testing, on-site commissioning and maintenance of the working system. The software supports not only the current range of process controllers but also previous generations. The additional support of ABB's variable speed motor drives makes such drives integral parts of the distributed control system.

Interoperable with EngineerIT

Control Builder A can interact with Engineer IT, making it possible to create, copy, delete, open and print control programs and other system configuration data simply by selecting the corresponding plant item (Aspect Object) in the Plant Explorer. This means that you can fetch ready-made program modules from the project structure and insert them into your overall scheme by simple drag-and-drop.

Standing alone or networked

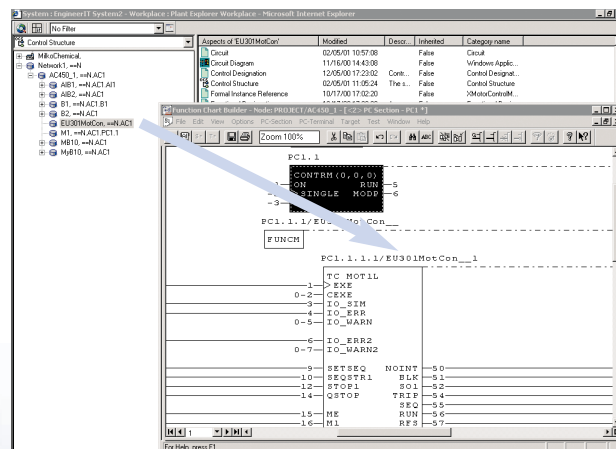
Control Builder A can be used independently or as part of a network with Engineer IT as the hub. A networked solution is perfect for larger application projects involving several persons by facilitating progress on a broad front with a minimum of interlocks between the different tasks. Work already done forms a natural basis for all subsequent tasks, regardless of who are about to undertake them.

Graphic application software development

The Function Chart Builder of Control Builder A enables you to develop AMPL control programs graphically, using a tree editor for hierarchical overview and navigation and a function chart editor for programming and program editing.

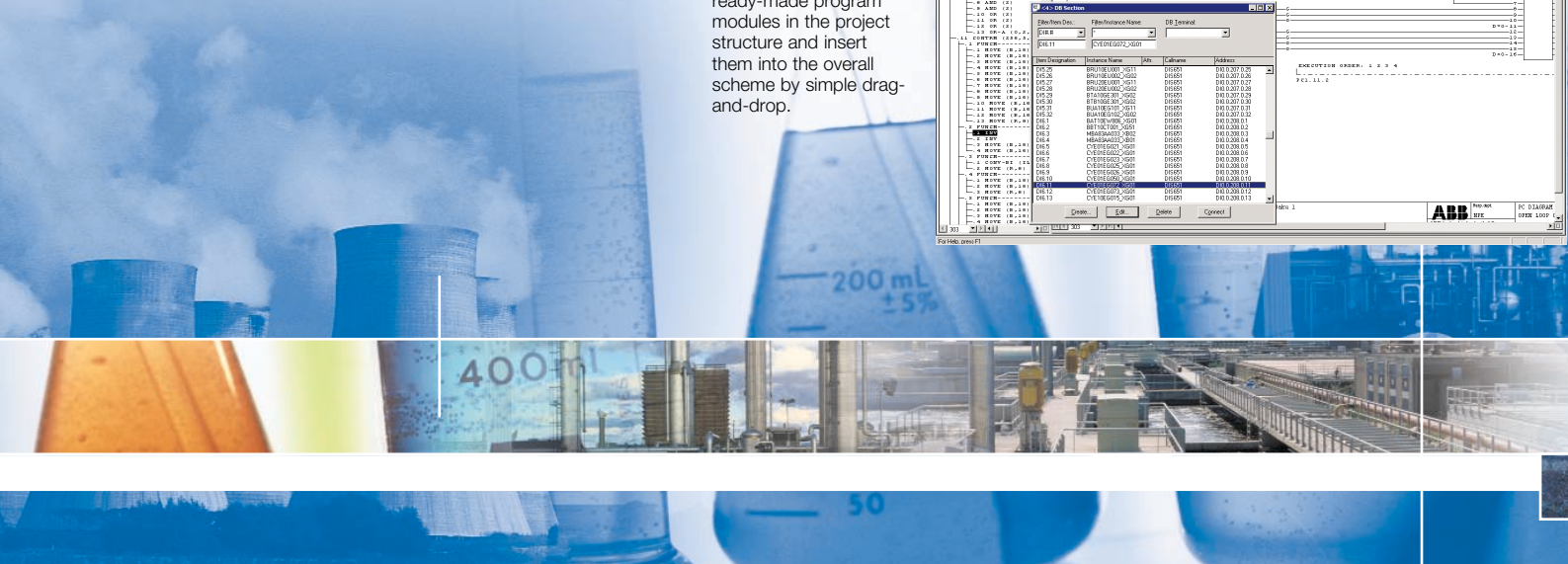
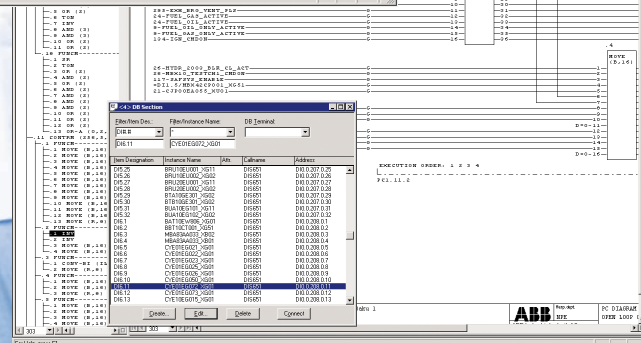
Control programming in AMPL is essentially a matter of inserting program elements – or type circuits – onto diagram sheets and connecting these elements to other elements and to process inputs and outputs. As you do this, easy-to-read circuit diagrams of your control scheme take shape before your eyes.

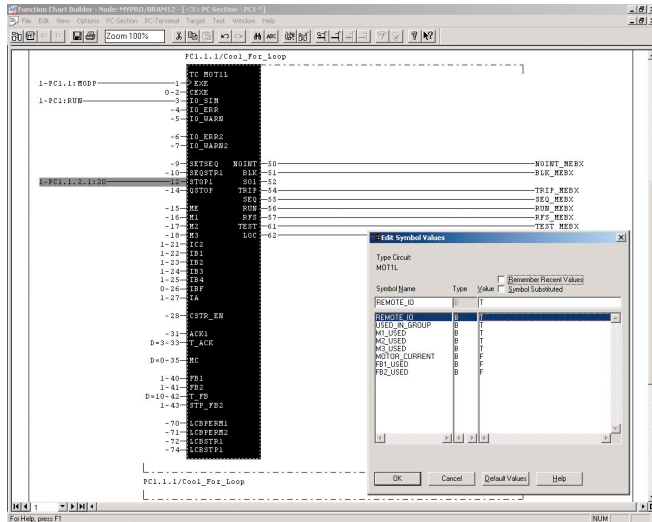
Not only is Control Builder A a dream to learn and use, it is also loaded with productivity-enhancing features such as data import/export, smart copy-and-paste between windows and applications, intelligent search and replace, and single-cycle editing of multiple records.



Connecting program elements to process I/O is as easy as clicking on an element terminal and then on the desired I/O instance.

In cooperation with Engineer IT, Control Builder A can fetch ready-made program modules in the project structure and insert them into the overall scheme by simple drag-and-drop.





Type Circuits are predeveloped standard solutions to recurring control needs that boost both engineering productivity and quality.

Application engineering ahead of time

Circuits are host-station-independent program modules making it possible to develop control solutions ahead of time, before the host hardware has been fully specified or built. Consequently, Circuits decouple hardware engineering from software engineering, allowing each discipline to progress independently. Type Circuits and Circuits are developed and maintained in the same way as any other AMPL programs. When finished, you store the (Type) Circuit, appearing as another AMPL element, in the appropriate library for later use. To use a (Type) Circuit, recall it from the library, insert it into your scheme and connect it to the surrounding world, just as you would any standard AMPL element.

Standardized, high-quality solutions at a low cost

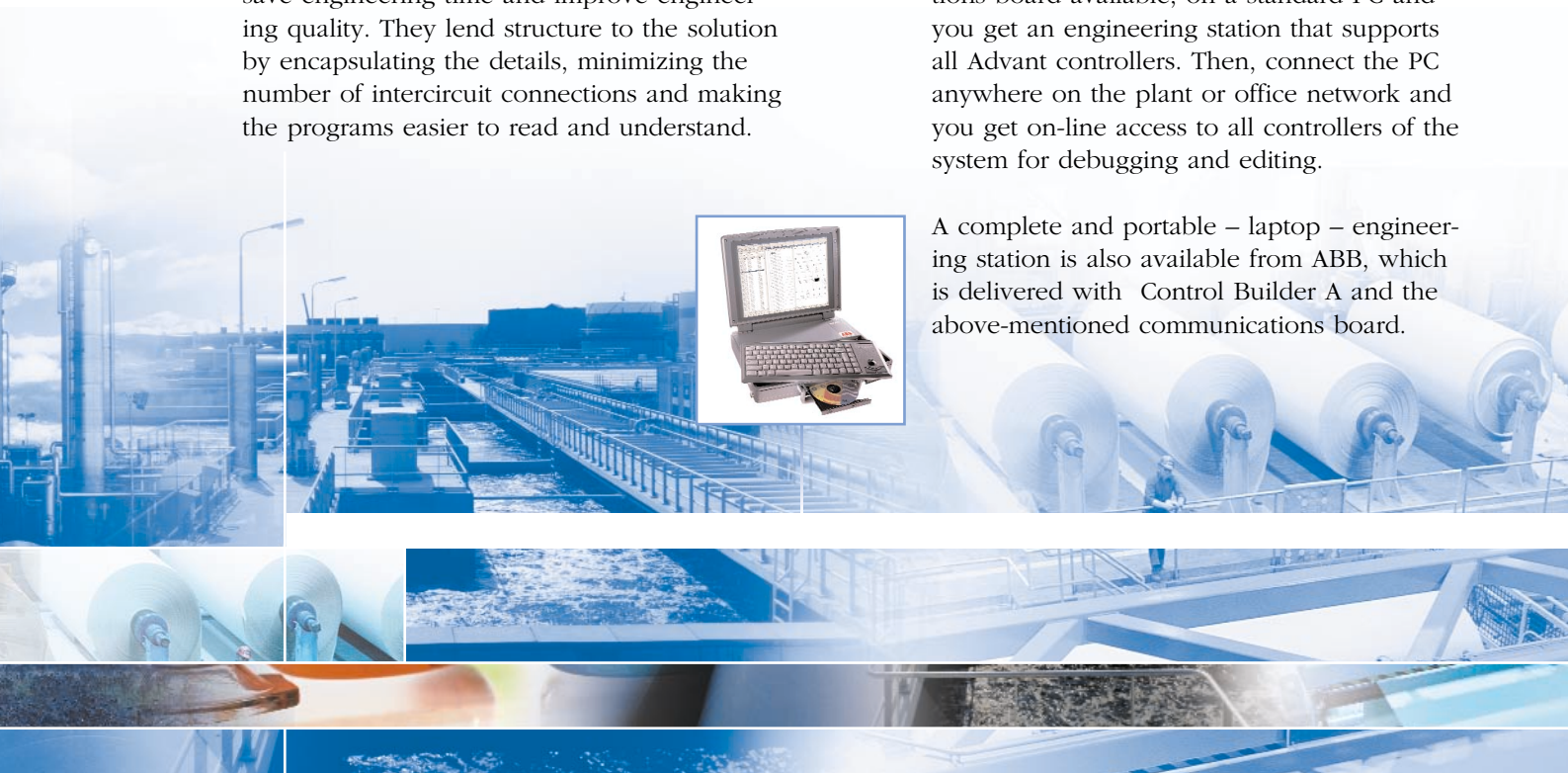
To save engineering time and facilitate off-line control program development ahead of time, Control Builder A supports both Type Circuits and Circuits.

Type Circuits are predeveloped standard solutions to recurring control needs, that is, a way for users to create proprietary, higher level program elements that can be used over and over again, whenever the needs reappear, by just changing user-definable parameters. By solving each control problem once only and testing the solution thoroughly, Type Circuits save engineering time and improve engineering quality. They lend structure to the solution by encapsulating the details, minimizing the number of intercircuit connections and making the programs easier to read and understand.

All in a neat package

Control Builder A consists of applications and utilities for project administration, software integration, control programming, commissioning, fault tracing and program editing. Install this software, and the optional communications board available, on a standard PC and you get an engineering station that supports all Advant controllers. Then, connect the PC anywhere on the plant or office network and you get on-line access to all controllers of the system for debugging and editing.

A complete and portable – laptop – engineering station is also available from ABB, which is delivered with Control Builder A and the above-mentioned communications board.



For additional information, visit us at www.abb.com/processautomation



Automation Technology Products

SE-721 59 Västerås
Sweden
Phone +46 (0) 21342000
Fax +46 (0) 21137845
www.abb.com/processautomation
email: processautomation@se.abb.com

Automation Technology Products

29801 Euclid Avenue
Wickliffe, Ohio 44092
Phone: +1 440 585 8500
Fax: +1 440 585 8756
www.abb.com/processautomation
email: industrialitsolutions@us.abb.com

Automation Technology Products

Dudenstraße 44-46
D-68167 Mannheim, Germany
Phone: +49 (0) 1805 266776
Fax: +49 (0) 1805 776329
www.abb.de/processautomation
email: marketing.control-products@de.abb.com

3BDD 010 092R0001 Copyright © 2002 by ABB Automation Products GmbH.
All rights to trademarks reside with their respective owners.
Specifications subject to change without notice.